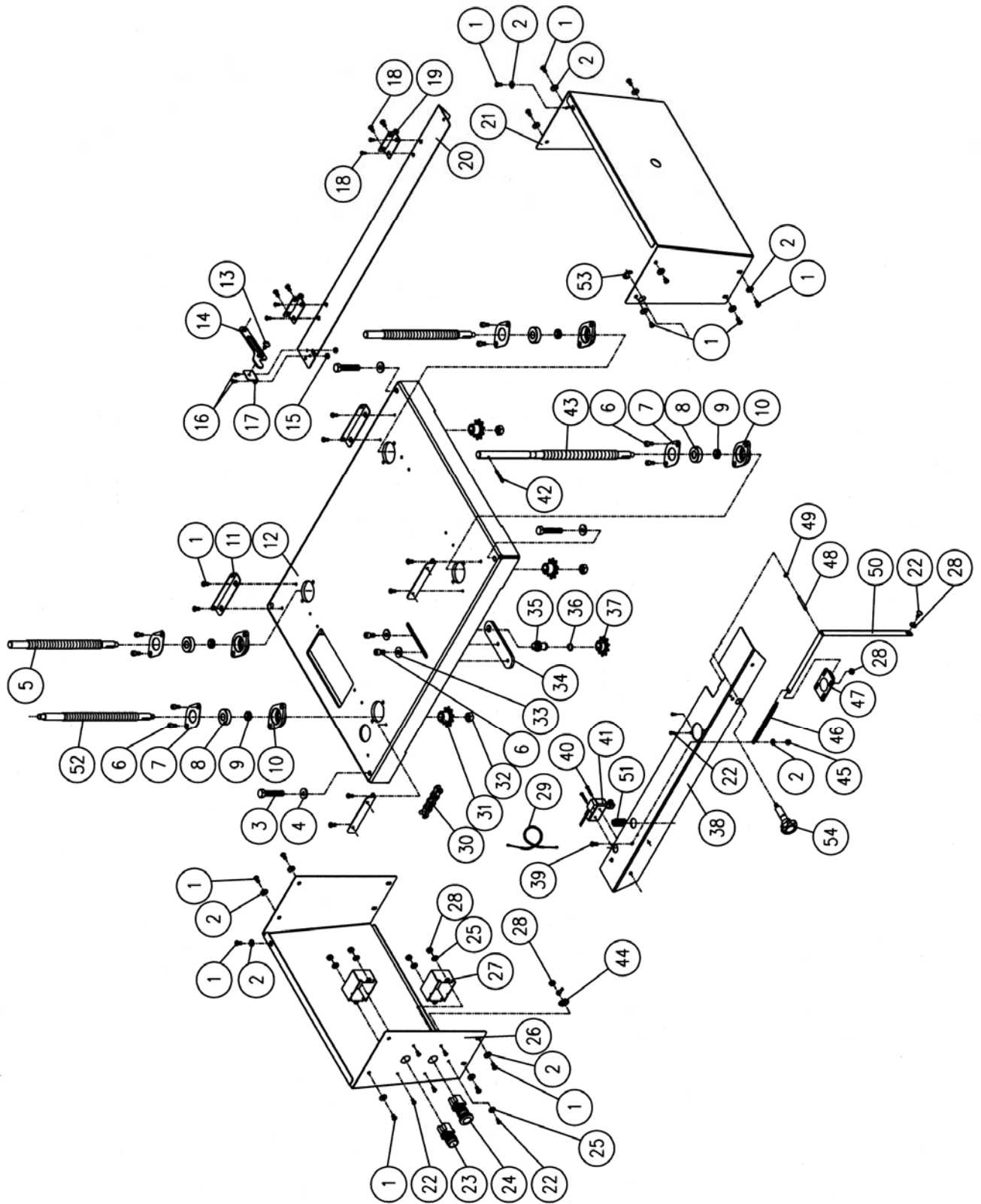


Parts List: Base Assembly

Index No.	Part No.	Description	Size	Qty
1	6286639	Round Head Screw	M6 x 10.P x 12Lg	26
2	6296220	Washer	6mm x 13 x 1T	19
3	6296221	Hex Cap Screw	M8 x 1.25P x 70Lg	4
4	6296222	Washer	8mm x 22 x 3T	4
5	6296223	Rear Lead Screw		2
6	TS-1504031	Socket Head Cap Screw	M8 x 1.25P x 16Lg	10
7	6296224	Flange		4
8	6296225	Bearing	6202-2NSE	4
9	6296226	Bushing		4
10	6296227	Bearing Housing		4
11	6296228	Bracket		4
12	6296229	Base		1
13	6296199	Shoulder Bolt	1/4-20NC	1
14	6296231	Bracket		1
15	6296198	Lock Nut	M5 x 0.8	2
16	JTM1055-B18-1	Round Head Screw	M5 x 0.8P x 10Lg	2
17	6296232	Bracket		1
18	6296233	Round Head Screw	M8 x 1.25P x 12Lg	8
19	6296234	Hinge		2
20	6296235	Rear Bracket		1
21	6296236	Right Side Cover		1
22	6296237	Round Head Screw	M4 x 0.7P x 12Lg	8
23	6296238	Start Switch		1
24	6296239	Stop Switch		1
25	6296240	Washer	4mm x 10 x 1T	6
26	6296241	Left Side Cover		1
27	6296242	Switch Box		2
28	TS-1540021	Hex Nut	M4 x 0.7	7
29	6296243	Contact Cord		1
30	6296244	Chain	410-146P	1
31	6296245	Sprocket		4
32	6296246	Lock Nut	M10 x 1.25	4
33	6296247	Washer	8mm x 19 x 2T	2
34	6296248	Bracket		1
35	6296249	Shaft		1
36	6296250	S-Ring	STW-15	1
37	6296251	Sprocket		1
38	6296252	Front Bracket		1
39	6296253	Round Head Screw	M6 x 1.0P x 15Lg	1
40	6296254	Round Head Screw	M4 x 0.7P x 25Lg	2
41	6296255	Limit Switch		1
42	111001-00-43	Spring Pin	4 x 25	1
43	6296256	Lead Screw		1
44	JWP12-150	Tooth Washer	BW-4	1
45	6296257	Check Nut	M6 x 1.0	1
46	6296258	Spring		1
47	6296259	Pointer		1
48	6296260	Shaft		1
49	6286482	E-Ring	ETW-4	1
50	6296261	Scale		1
51	6296262	Spring		1
52	6296263	Front Lead Screw		1
53	6012062	E-Ring	ETW-12	1
54	6296311	Lock Knob		1

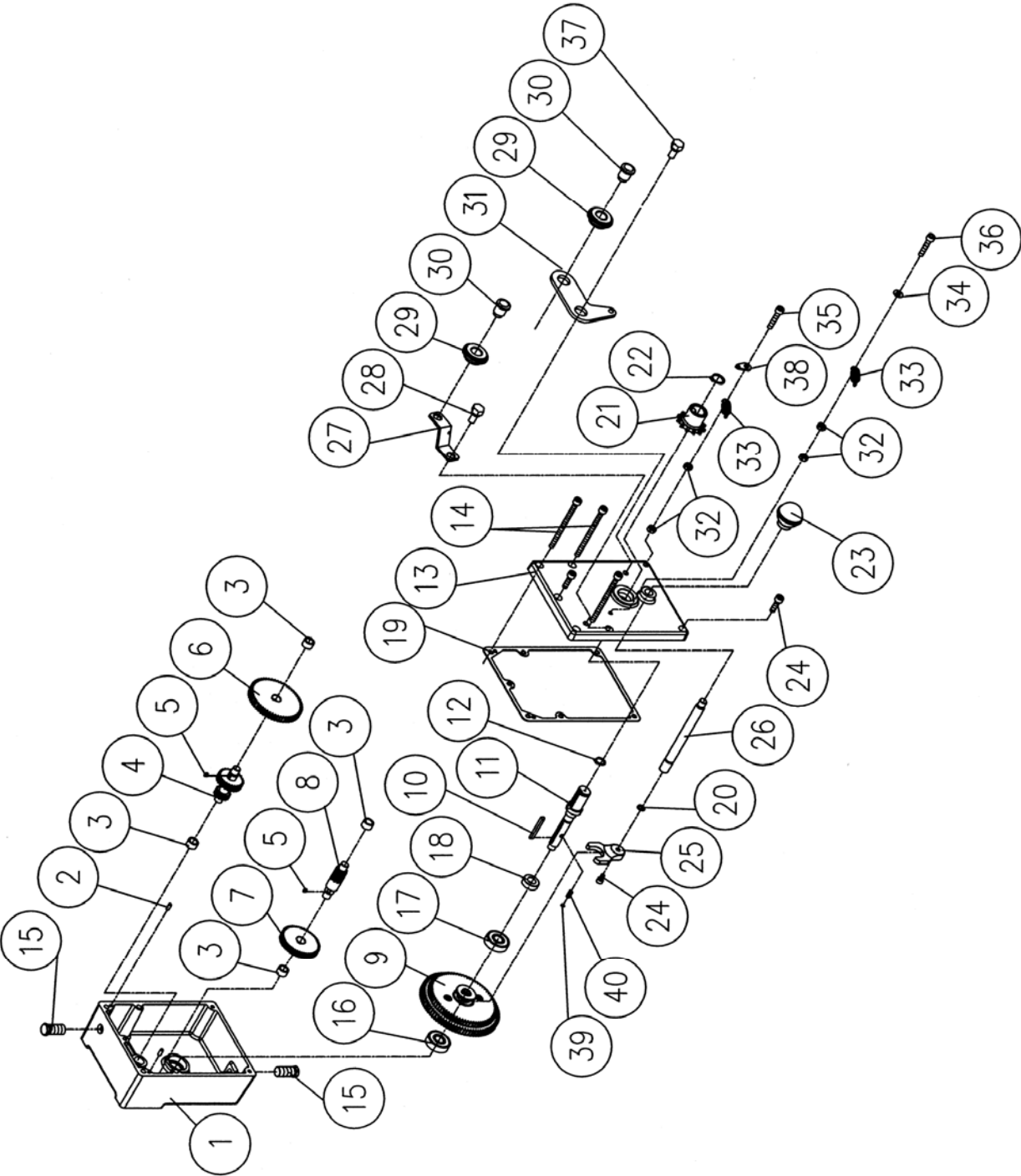
Base Assembly



Parts List: Gearbox Assembly

Index No.	Part No.	Description	Size	Qty
.....	6296310A.....	Gearbox Assembly (Items 1 thru 40) (for serial no. 0412PM15488 and higher)		1
1.....	6296264A.....	Gearbox Body		1
2.....	6296265.....	Pin.....		2
3.....	6296266.....	Bushing.....		5
4.....	6296267.....	Gear.....		1
5.....	6296268.....	Key.....	.4 x 4 x 6 mm.....	2
6.....	6296269.....	Gear.....		1
7.....	6296270.....	Gear.....		1
8.....	6296271.....	Gear Shaft.....		1
9.....	6296272.....	Gear Assembly.....		1
10.....	6296273.....	Key.....	.4 x 4 x 40 mm.....	1
11.....	6296274.....	Shaft.....		1
12.....	6296275.....	S-Ring.....	STW-12.....	1
13.....	6296276A.....	Gearbox Cover.....		1
14.....	6296277.....	Socket Head Cap Screw.....	M6 x 1.0P x 80Lg.....	4
15.....	6296315.....	Oil Plug.....	PT1/4-19.....	2
16.....	BB-6000ZZ.....	Ball Bearing.....	6000ZZ.....	1
17.....	BB-6201ZZ.....	Ball Bearing.....	6201ZZ.....	1
18.....	6296314.....	Oil Seal.....	TC14 x 25 x 7.....	1
19.....	6296317A.....	Packing.....		1
20.....	6296318.....	O-Ring.....	P9.....	1
21.....	6296210.....	Sprocket.....		1
22.....	6296211.....	S-Ring.....	STW-17.....	1
23.....	6296281.....	Knob.....		1
24.....	6286490.....	Socket Head Cap Screw.....	M6 x 1.0P x 15.....	7
25.....	6296283.....	Clutch.....		1
26.....	6296284.....	Rod.....		1
27.....	6296319.....	Bracket.....		1
28.....	6296320.....	Shaft.....		1
29.....	6296321.....	Idle.....		2
30.....	6296322.....	Shaft.....		2
31.....	6296323.....	Bracket.....		1
32.....	TS-2311061.....	Hex Nut.....	M6 x 1.0P.....	4
33.....	6296324.....	Spring.....		2
34.....	TS-1550041.....	Washer.....	6.3mm x 13 x 1.....	1
35.....	TS-1503071.....	Socket Head Cap Screw.....	M6 x 1.0P x 30Lg.....	1
36.....	TS-1503051.....	Socket Head Cap Screw.....	M6 x 1.0P x 20Lg.....	1
37.....	PM15-237.....	Shaft.....		1
38.....	PM15-238.....	Hanger.....		1
39.....	SB-5MM.....	Steel Ball.....	.5mm.....	1
40.....	PM15-240.....	Spring.....		1

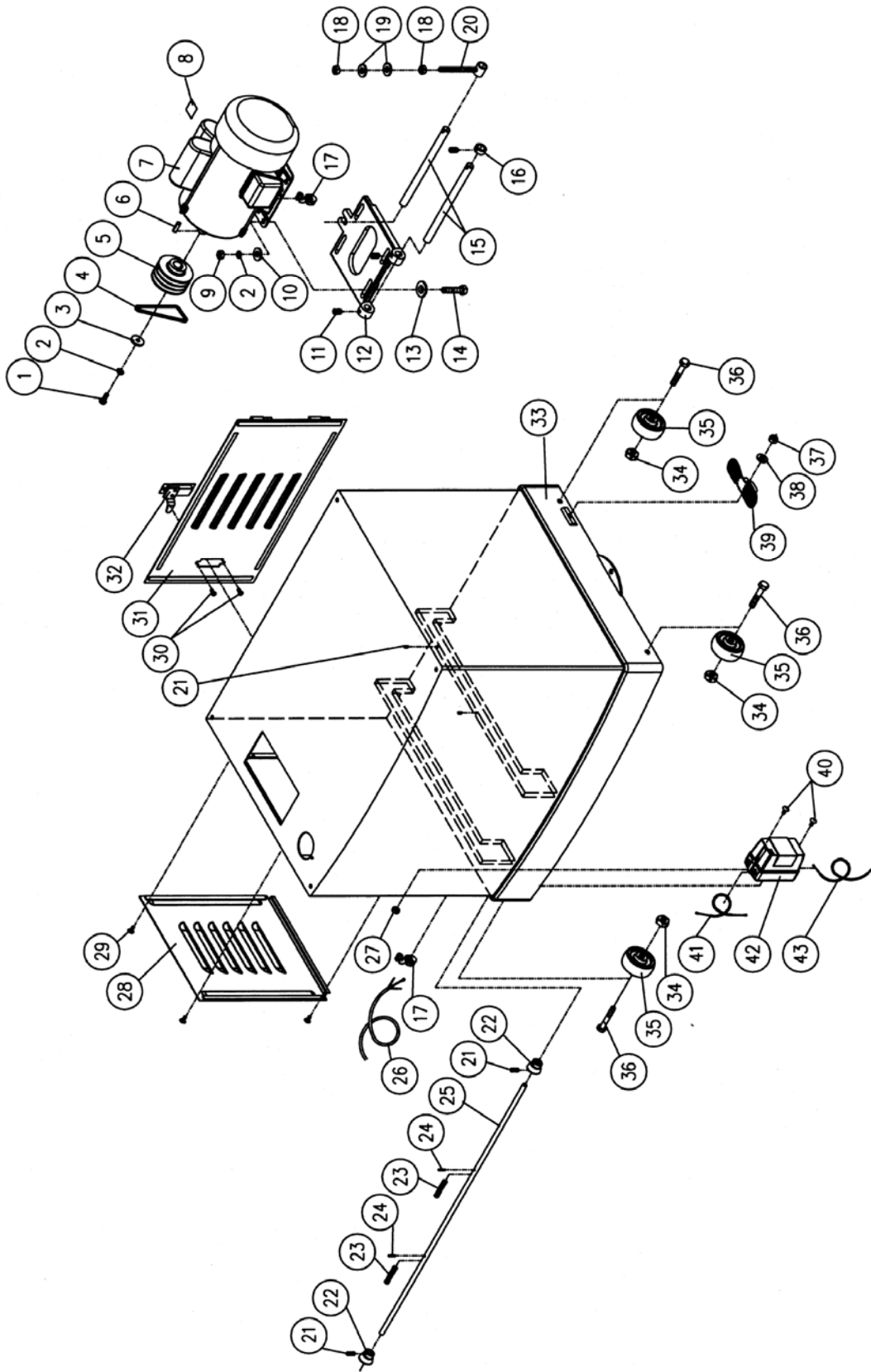
Gearbox Assembly



Parts List: Stand Assembly

Index No.	Part No.	Description	Size	Qty
1	TS-1490031	Hex Cap Screw	M8 x 1.25P x 20Lg	1
2	TS-1551061	Lock Washer	8mm	5
3	6296175	Special Washer	8mm x 32 x 4T	1
4	6296286	Belt	M57	3
5	6296287	Motor Pulley		1
6	6296288	Key	5 x 5 x 35 mm	1
7	6296289	Motor	.5HP, 1 PH, 230V	1
9	TS-1540061	Hex Nut	M8 x 1.25	4
10	6296279	Washer	8mm x 16 x 2T	3
11	TS-1523041	Socket Set Screw	M6 x 1.0P x 12Lg	1
12	6296290	Motor Bracket		1
13	6296291	Washer	8mm x 19 x 2T	4
14	TS-1490061	Hex Cap Screw	M8 x 1.25P x 35Lg	4
15	6296292	Support Bar		2
16	6296293	Collar		1
17	6296294	Strain Relief Bushing	SB9R-2	2
18	TS-1540071	Hex Nut	M10 x 1.5	2
19	6296295	Washer	10mm x 28 x 3	2
20	6296296	Adjustment Bolt		1
21	TS-1523011	Socket Set Screw	M6 x 1.0P x 6Lg	4
22	6296213	Eccentric Cam		2
23	6296297	Spring		2
24	6296298	Spring Pin	.4 x 20	2
25	6296299	Shaft		1
26	6296300	Power Cord		1
27	6296301	Lock Nut	M4 x 0.7	2
28	6296302	Door		1
29	6286639	Round Head Screw	M6 x 1.0P x 12Lg	4
30	6296303	Round Head Screw	M4 x 0.7P x 6Lg	2
31	6296304	Rear Door		1
32	6296305	Latch		1
33	6296306	Stand		1
34	TS-0640091	Lock Nut	3/8-16NC	4
35	6296307	Wheel		4
36	TS-0060111	Hex Cap Screw	3/8-16NC x 2-1/2	4
37	TS-1541041	Lock Nut	M10 x 1.5	1
38	6296308	Washer	10mm x 22 x 2T	1
39	6296309	Foot Brake		1
40	6296187	Round Head Screw	M4 x 0.7P x 45Lg	2
41	6296230	Control Cord		1
42	6296282	Magnetic Switch		1
43	6296285	Motor Cord		1

Stand Assembly

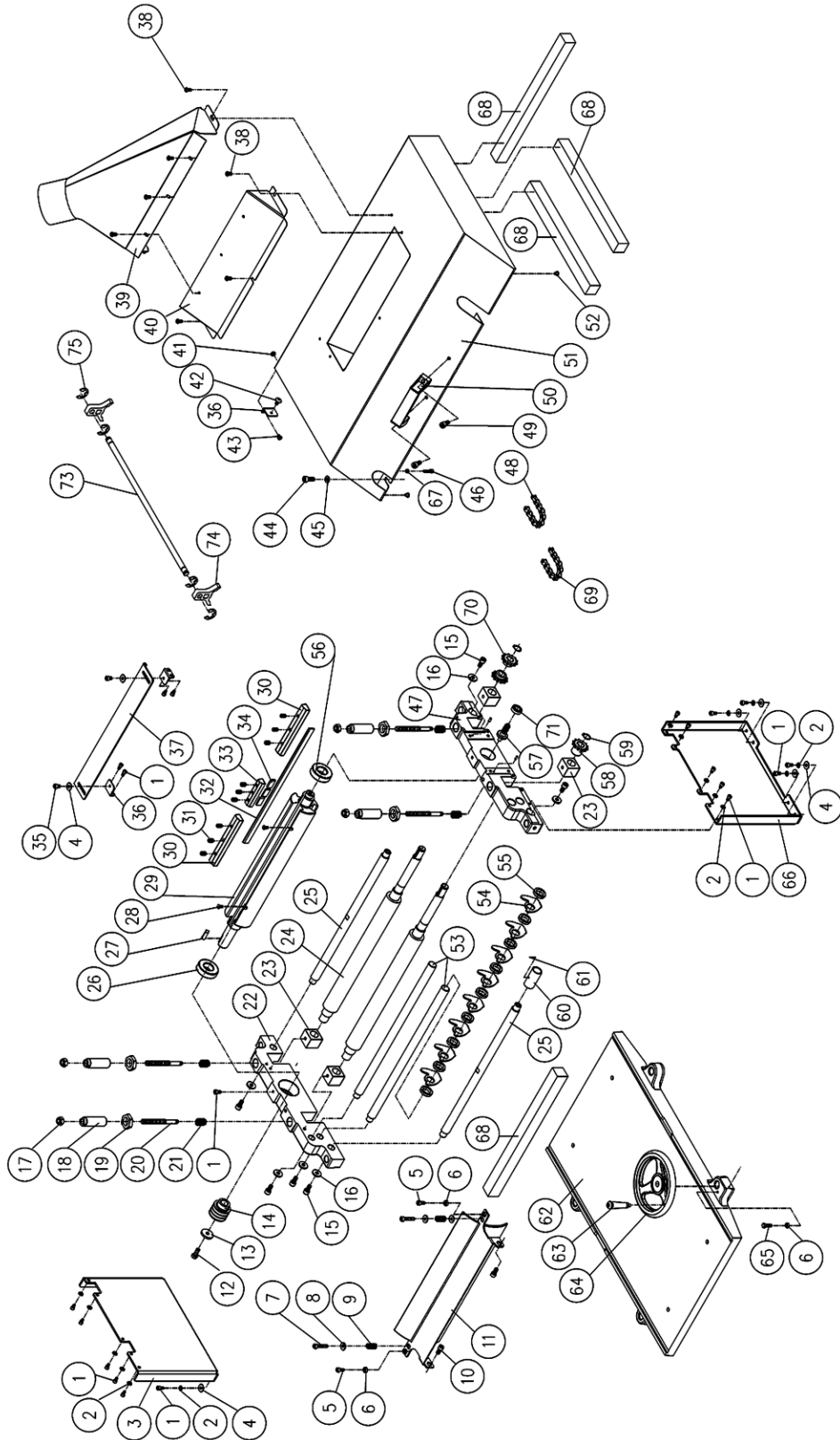


Parts List: Cutterhead, Hood and Table Assembly

Index No.	Part No.	Description	Size	Qty
1	6286490	Socket Head Cap Screw	M6 x 1.0P x 15Lg.	23
2	TS-1551041	Lock Washer	6mm	18
3	6296169	Left Support Plate		1
4	6296170	Washer	6mm x 13 x 2T	10
5	TS-1503051	Socket Head Cap Screw	M6 x 1.0 x 20	2
6	6292641	Hex Nut	M6 x 1.0	3
7	TS-1504081	Socket Head Cap Screw	M8 x 1.25P x 40	2
8	6296171	Washer	8mm x 22 x 3T	2
9	6296172	Spring		2
10	6296173	Socket Head Cap Screw	M8 x 1.25P x 15Lg.	2
11	6296174	Chipbreaker		1
12	TS-1504041	Hex Cap Screw	M8 x 1.25P x 20Lg.	1
13	6296175	Special Washer	8mm x 32 x 4T	1
14	6296176	Cutterhead Pulley		1
15	TS-1504031	Socket Head Cap Screw	M8 x 1.25P x 16Lg.	6
16	6296177	Washer	8mm x 19 x 2T	6
17	TS-2342101	Lock Nut	M10 x 1.5	4
18	6296178	Adjustment Shaft		4
19	6296179	Adjustment Nut		4
20	6296180	Adjustment Screw		4
21	6296181	Spring		4
22	6296182	Left Cutterhead Bracket		1
23	6296183	Bushing		4
24	6296184	Rubber Roller		2
25	6296185	Locating Rod		2
26	6296186	Ball Bearing	6205-2NSE	1
27	6012165	Key	8 x 7 x 30 mm	1
28	6296055	Flat Head Screw	M5 x 0.8P x 12Lg.	6
29	6296188	Cutterhead		1
30	6296189	Knife Lock Bar	7"L	6
31	TS-1524031	Socket Set Screw	M8 x 1.25P x 12Lg.	27
32	6296190	Knife (set of 3)		1
33	6296191	Knife Lock Bar	4"L	3
34	6296192	Lock Bar Spacer		9
35	TS-0207011	Socket Head Cap Screw	1/4-20NC x 3/8	2
36	6296193	Bracket		3
37	6296194	Chip Deflector		1
38	6296195	Hex Cap Screw w/Washer	M6 x 1.0P x 12Lg.	8
39	6296196	Dust Chute		1
40	6296197	Dust Hood		1
41	6296198	Lock Nut	M5 x 0.8	2
42	6296199	Special Bolt w/ Shoulder	1/4-20NC	1
43	JTM1055-B18-1	Round Head Screw	M5 x 0.8P x 10Lg.	12
44	TS-1504041	Socket Head Cap Screw	M8 x 1.25P x 20Lg.	1
45	6296200	Washer	8mm x 30 x 3T	3
46	TS-1502051	Socket Head Cap Screw	M5 x 0.8P x 20Lg.	1
47	6296201	Right Cutterhead Bracket		1
48	6296202	Chain (outfeed roll to infeed roll)	.06B-64P	1
49	TS-1490041	Hex Cap Screw	M8 x 1.25P x 25Lg.	2
50	6296203	Handle		1
51	6296204	Top Cover		1
52	6296205	Rubber Bumper		1
53	6296206	Anti-Kickback Shaft		1
54	6296207	Anti-Kickback Finger		42
55	6296208	Anti-Kickback Collar		48
56	6012038	Bearing	6204-2NSE	1
57	6296209	Gear		1

58.....	6296210.....	Sprocket	2
59.....	6296211.....	S-Ring	STW-17
60.....	6296212.....	Limiter.....	1
61.....	TS-1521021	Set Screw	M4 x 0.7P x 6Lg
62.....	6296214.....	Middle Table	1
63.....	6296215.....	Handle Assembly.....	1
64.....	6296216.....	Handwheel.....	1
65.....	6296217.....	Hex Cap Screw	M6 x 1.0P x 20Lg.....
66.....	6296218.....	Right Support Plate.....	1
67.....	TS-1540031	Hex Nut.....	M5 x 0.8.....
68.....	6296219.....	Sponge.....	2
69.....	6296312.....	Chain (gearbox to outfeed roll).....	.06B-37P.....
70.....	6296313.....	Sprocket	2
71.....	6296314.....	Oil Seal.....	1
72.....	6012192.....	Warning Label (not shown).....	1
73.....	6284833.....	Shaft.....	1
74.....	6284832.....	Blade Adjuster	2
75.....	6284834.....	E-Ring	ETW9
.....	6284802.....	Knife Setting Gauge Assembly (Items 73 thru 75)	1
76.....	PM15-476	Molding Knife Gauge (not shown)	1
77.....	TS-1503041	Socket Head Cap Screw (not shown)	M6 x 15.....
78.....	TS-2361061	Lock Washer (not shown)	M6.....
79.....	TS-1550041	Flat Washer (not shown)	M6.....
.....	PM15-HP	Hardware Package (see "Unpacking" section for contents).....

Cutterhead, Hood and Table Assembly



Electrical Connections

