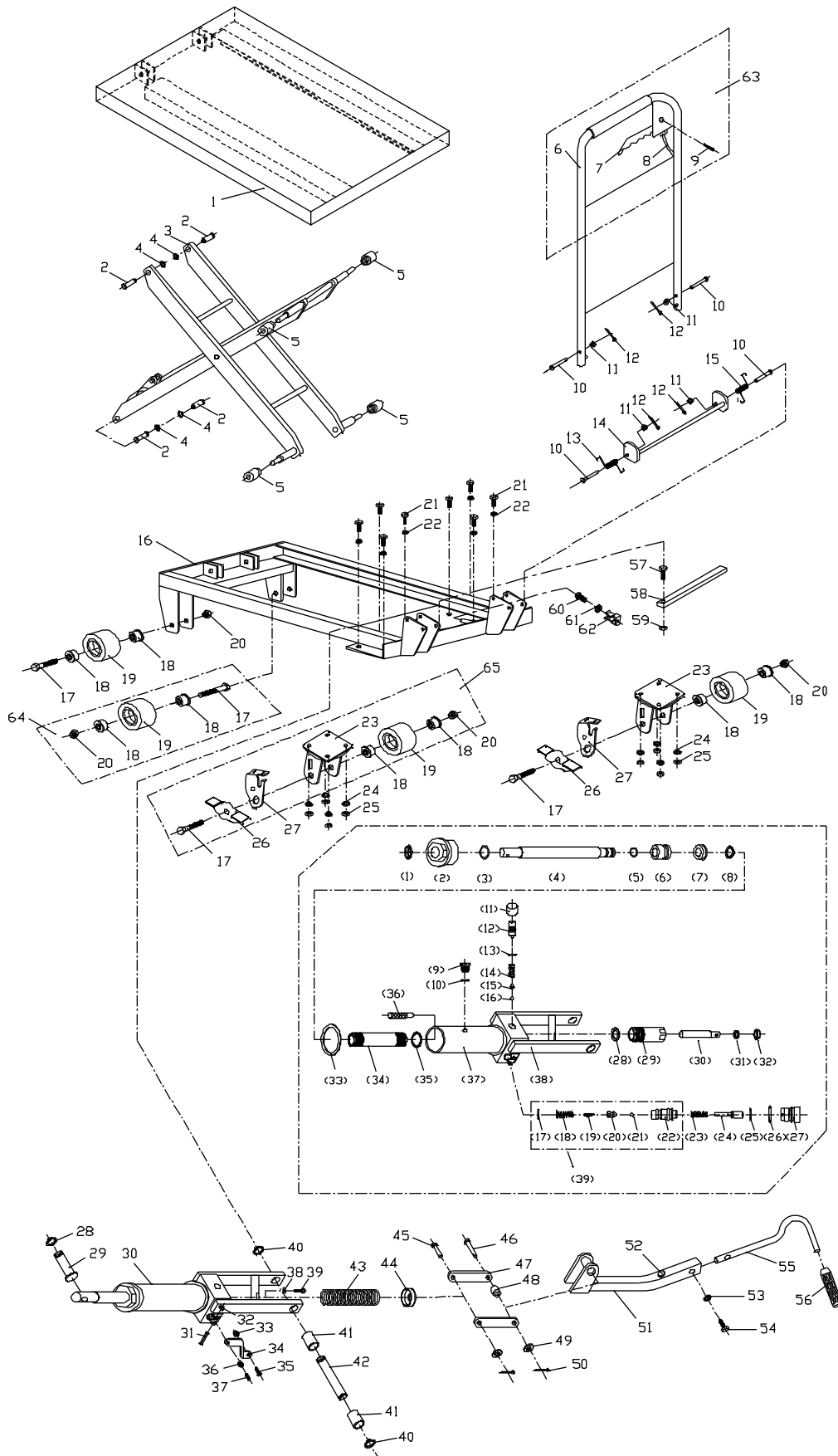


# Breakdown for SLT-330F Hydraulic Scissor Lift



## Parts List for SLT-330F Hydraulic Scissor Lift

Index No.	Part No.	Description	Size	Qty
1	SLT330F-01	Table		1
2	SLT330F-02	Link Shaft		4
3	SLT330F-04	Link Assembly		1
4	SLT330F-03	C-Ring	Ø 12 mm	4
5	SLT330F-05	Roller Guide		4
6	SLT330FH-06	Handle		1
7	SLT330FH-07	Release Lever		1
8	SLT330FH-08	Cable		1
9	SLT330FH-09	Spring Pin	Ø 6 x 22 mm	1
10	SLT330FH-10	Lock Pin		4
11	SLT660F-66	Washer	Ø 8 mm	4
12	SLT660FH-14	Split Pin	Ø 3 x 20 mm	4
13	SLT330FH-13	Spring A		1
14	SLT330FH-14	Foot Lever		1
15	SLT330FH-15	Spring B		1
16	SLT330FH-16	Frame		1
17	SLT330FH-17	Hex Cap Screw	M12 x 65	1
18	SLT330FH-18	Nonstandard Bearing		8
19	SLT330FH-19	Wheel	4"	4
20	TS-2342121	Lock Nut	M12	4
21	TS-1490031	Hex Cap Screw	M8 x 20	8
22	TS-1550061	Washer	Ø 8 mm	6
23	SLT330FH-23	Swivel Wheel Holder		2
24	TS-1550061	Washer	Ø 8 mm	8
25	TS-1541031	Lock Nut	M8	8
26	SLT330FH-26	Brake Plate		2
27	SLT330FH-27	Stop Support		2
28	SLT330F-03	C-Ring	Ø 12 mm	1
29	SLT330F-24	Shaft		1
30	SLT330FH-30	Hydraulic Pump Assembly		1
[1]	SLT3300F-26-1	Oil Seal*	DHS25	1
[2]	SLT330F-26-2	Top Nut		1
[3]	SLT330F-26-3	O-Ring*	Ø 31 x 3.5 mm	1
[4]	SLT330F-26-4	Lift Piston		1
[5]	SLT330F-30-5	O-Ring*	Ø 14 x 2.4 mm	1
[6]	SLT330F-26-5	Piston Bushing		1
[7]	SLT330F-26-7	U-Packing*	D30	1
[8]	SLT330F-26-8	C-Ring	Ø 18 mm	1
[9]	SLT330F-26-9	Air Breather		1
[10]	SLT330F-26-10	O-Ring*	Ø 11x1.9 mm	1
[11]	SLT330F-26-11	Relief Plug Cover		1
[12]	SLT330F-26-13	Relief Adjusting Screw		1
[13]	SLT330F-26-10	O-Ring*	Ø 11 x 1.9 mm	1
[14]	SLT330F-26-14	Spring		1
[15]	SLT330F-26-15	Steel Ball Support		1
[16]	SB-5MM	Steel Ball	Ø 5 mm	1
[17]	SLT330FH-30-17	Valve Cap		1
[18]	SLT330FH-30-18	Spring		1
[19]	SLT330FH-30-19	Helix Valve		1
[20]	SL330FH-30-20	Cone Valve		1
[21]	SLT330FH-30-21	Steel Ball	Ø 6.35 mm	1
[22]	SLT330FH-30-22	Valve		1
[23]	SLT330FH-30-23	Spring		1
[24]	SLT330FH-30-24	Adjusting Shaft		1
[25]	SLT330F-26-23	O-Ring*	Ø 14 x 2.4 mm	1
[26]	SLT330FH-30-26	O-Ring	Ø 16 x 2.4 mm	1

Index No.	Part No.	Description	Size	Qty
[27]	SLT330FH-30-27	Bonnet		1
[28]	SLT330FH-30-28	Inner Washer		1
[29]	SLT330F-26-30	Pump Cylinder		1
[30]	SLT330F-26-34	Pump Piston		1
[31]	SLT330F-26-33	Oil Seal*	UHS18	1
[32]	SLT330F-26-32	U-Packing*	DHS18	1
[33]	SLT330F-30-33	Outer Washer*		2
[34]	SLT330FH-30-34	Inside Cylinder Tube		1
[35]	SLT330FH-30-35	Inside Washer*		1
[36]	SLT330FH-30-36	Filter		1
[37]	SLT330FH-30-37	Outer Cylinder Tube		1
[38]	SLT330FH-30-38	Pump Body		1
[39]	SLT330FH-30-39	Valve Assembly (Index # [17] thru [22])		1
31	SLT330FH-31	Pin		1
32	SLT330FH-32	C-Ring	Ø 8 mm	1
33	TS-2311081	Hex Nut	M8	1
34	SLT330FH-34	Platen		1
35	SLT330FH-21	Hex Cap Screw	M8 x 20	1
36	TS-2311081	Hex Nut	M8	1
37	SLT330FH-37	Socket Set Screw	M8 x 30	1
38	TS-2311081	Hex Nut	M8	1
39	SLT330FH-39	Hex Cap Screw	M8 x 30	1
40	SLC660F-38	C-Ring	Ø 20 mm	2
41	SLT330FH-41	Bushing		1
42	SLT330FH-42	Shaft		1
43	SLT330F-37	Spring		1
44	SLT330F-38	Spring Cover		1
45	SLT330FH-45	Pin		1
46	SLT330FH-46	Pin		1
47	SLT330F-39	Slide Plate		2
48	SLT330F-42	Bushing		1
49	SLT330FH-49	Washer	Ø 10 mm	2
50	SLT660FH-63	Split Pin	Ø 3 x 30 mm	2
51	SLT330F-44	Lever		1
52	SLT330FH-52	Rubber Bumper		1
53	TS-2361081	Spring Washer	Ø 8 mm	1
54	TS-1490051	Hex Cap Screw	M8 x 30	1
55	SLT330F-48	Foot Lever		1
56	SLT330F-49	Foot Lever Pad		1
57	SLT660FH-70	Hex Cap Screw	M10 x 30	1
58	SLT330FH-58	Safety Bar		1
59	SLT660FH-72	Hex Nut	M10	1
60	SLT660FH-73	Hex Cap Screw	M6 x 10	1
61	SLT660FH-74	Spring Washer	Ø 6 mm	1
62	SLT660FH-75	Spring Clip		1
63	SLT330FH-63	Handle Assembly (index # 6 thru 9)		1
64	SLT330FH-64	Front Wheel Assembly (index # 17 thru 20)		1
65	SLT330FH-65	Swivel Wheel Assembly (index # 17-20,23,26-27)		1
	SLT330FH-RK	Repair Kit		1

Index Numbers in brackets are part of the Hydraulic Pump Assembly, SLT330FH-30.

Parts included in the repair kit are indicated by an asterisk \*.