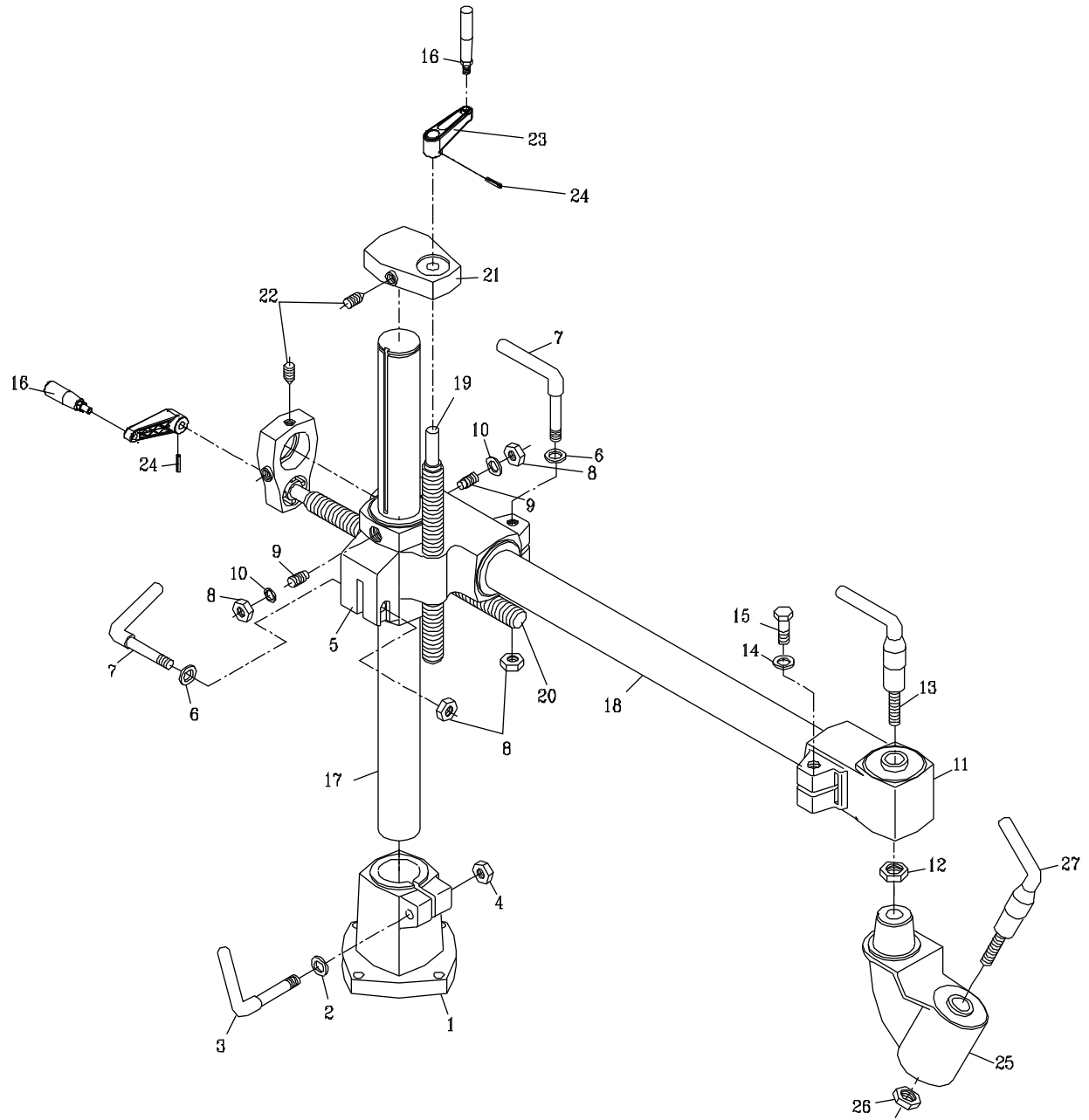


Parts List: PF3-JR Stand Assembly

Index No.	Part No.	Description	Size	Qty
1	PF3JR-101	Base		1
2	TS-1550061	Flat Washer	M8	1
3	PF3JR-103	Lock Handle		1
4	TS-1540061	Hex Nut	M8	1
5	PF3JR-105	Elevating Bracket		1
6	TS-1550061	Flat Washer	M8	2
7	PF3JR-107	Lock Handle		2
8	TS-1540061	Hex Nut	M8	4
9	PF3JR-109	Mod. Screw		2
10	TS-2361081	Lock Washer	M8	2
11	PF3JR-111	Arm Cone		1
12	TS-2310162	Hex Nut	M16x1.5P	1
13	PF3JR-113	Lock Handle		1
14	TS-1550071	Flat Washer	M10	1
15	TS-1491081	Hex Cap Screw	M10x50	1
16	PF3JR-116	Handle		2
17	PF3JR-117	Vertical Column		1
18	PF3JR-118	Horizontal Arm		1
19	PF3JR-119	Elevating Screw		1
20	PF3JR-120	Horizontal Screw		1
21	PF3JR-121	Column Cap		1
22	TS-1524031	Socket Set Screw	M8x12	3
23	PF3JR-123A	Elevating Handle		2
24	PF3JR-124	Pin	4x30 mm	2
25	PF3JR-125	Swivel Cone		1
26	TS-2310162	Hex Nut	M16x1.5P	1
27	PF3JR-127	Lock Handle		1

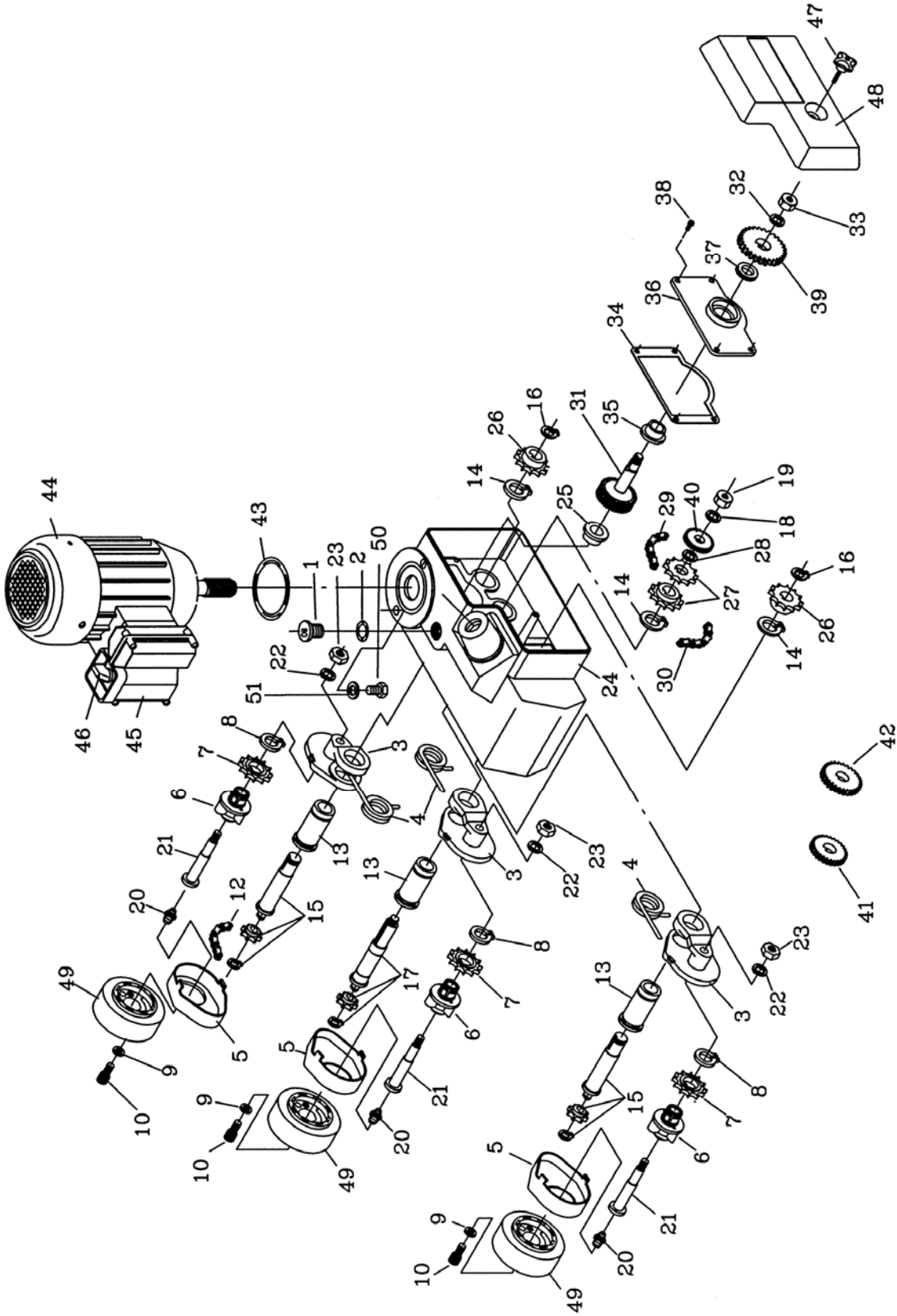
Exploded View: PF3-JR Stand Assembly



Parts List: PF3-JR Stock Feeder

Index No.	Part No.	Description	Size	Qty
1	PF3JR-201	Oil Cap		1
2	PF3JR-202	"O" Ring		1
3	PF3JR-203	Sprocket Case		3
4	PF3JR-204	Spring		3
5	PF3JR-205	Case Cover		3
6	PF3JR-206	Roller Supporter		3
7	PF3JR-207	Sprocket		3
8	PF3JR-208	Snap Ring	Ø 22 mm	3
9	TS-1551041	Lock Washer	M6	6
10	TS-1503061	Socket Head Cap Screw	M6x25	6
12	PF3JR-212	Chain (18S)	18S	3
13	PF3JR-213	Tube		3
14	PF3JR-214	Snap Ring	Ø 26 mm	3
15	PF3JR-215	Sprocket Shaft Assembly		2
16	PF3JR-216	Snap Ring	Ø 15 mm	2
17	PF3JR-217	Sprocket Shaft Assembly		1
18	TS-1550071	Flat Washer	M10	1
19	TS-1540071	Hex Nut	M10	1
20	PF3JR-220	Grease Fitting		3
21	PF3JR-221	Shaft		3
22	TS-2361081	Lock Washer	M8	3
23	TS-1540061	Hex Nut	M8	3
24	PF3JR-224	Frame		1
25	PF3JR-225	Bushing		1
26	PF3JR-226	Sprocket		2
27	PF3JR-227	Sprocket		2
28	PF3JR-228	Bushing		1
29	PF3JR-229	Chain (30S)	30S	1
30	PF3JR-230	Chain (22S)	22S	1
31	PF3JR-231	Worm Gear Shaft		1
32	TS-1550071	Flat Washer	M10	1
33	TS-1540071	Hex Nut	M10	1
34	PF3JR-234	Oil Seal		1
35	PF3JR-235	Bushing		1
36	PF3JR-236	Worm Gear Cover		1
37	PF3JR-237	Oil Seal		1
38	TS-1502031	Socket Head Cap Screw	M5x12	4
39	PF3JR-239	Gear (16T)	16T	1
40	PF3JR-240	Gear (34T)	34T	1
41	PF3JR-241	Gear (26T)	26T	1
42	PF3JR-242	Gear (24T)	24T	1
43	PF3JR-243	"O" Ring		1
44	PF3JR-244	Motor	1/4HP, 1Ph, 115V	1
	PF3JR-244C	Capacitor (Not shown)	250V 20uf	1
45	PF3JR-245	Switch Box		1
46	PF3JR-246	Switch		1
47	PF3JR-247	Knob		1
48	PF3JR-248	Back Cover		1
49	PF3JR-249	Roller (30 x 80 Dia)	30x80 dia. mm	3
50	TS-1482041	Hex Cap Screw	M6x20	2
51	TS-1550041	Flat Washer	M6	2
52	PF3JR-252	Powermatic Nameplate (not shown)	1"x4"	1
53	PF3JR-253	Warning Label – Main Switch (not shown)		1

Exploded View: PF3-JR Stock Feeder



Electrical Connections for PF3-JR Stock Feeder

