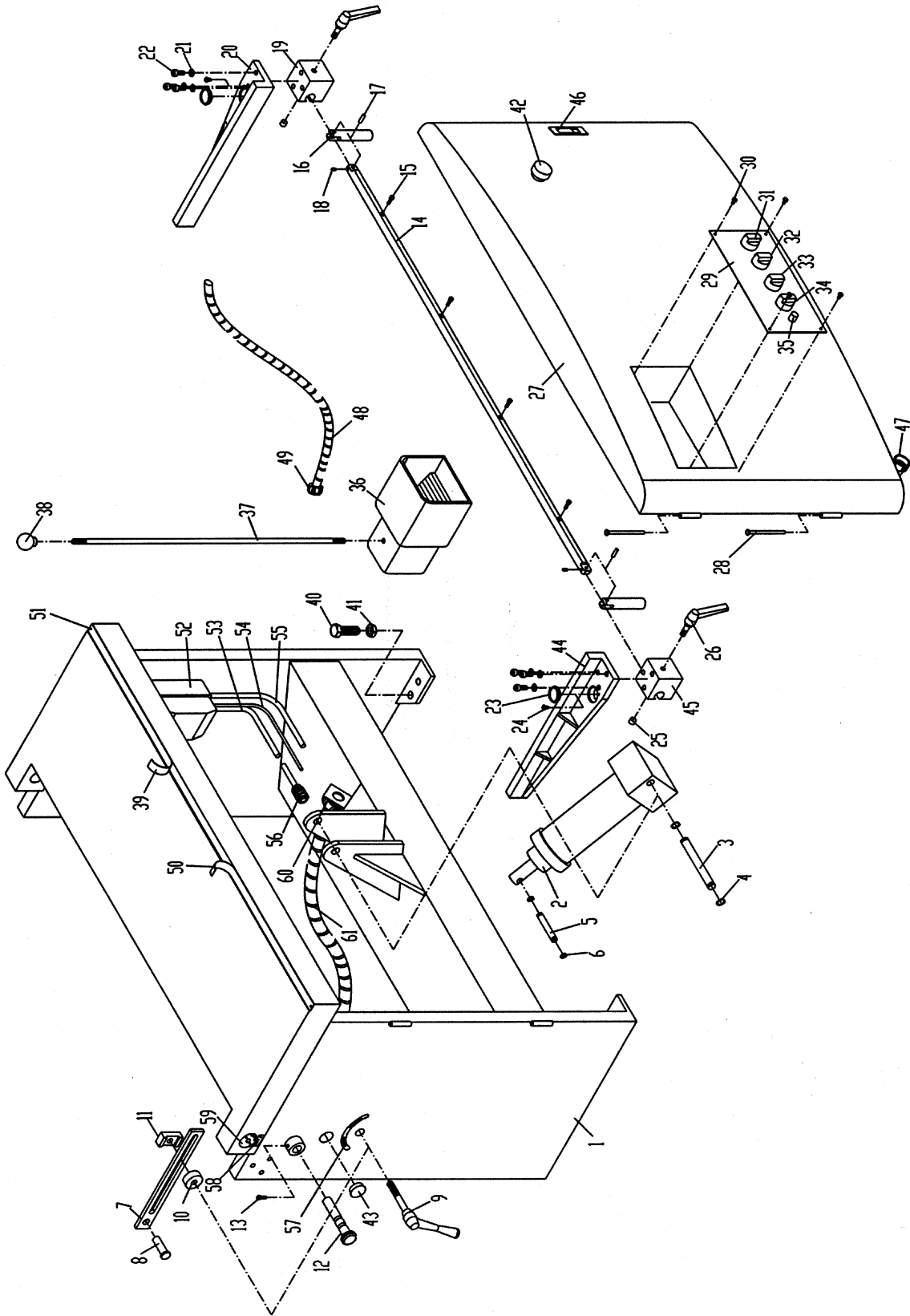


## Parts List: Frame Assembly

Index No.	Part No.	Description	Size	Qty
1	CBM21-101	Machine Frame		1
2	CBM21-102	Tilting Cylinder		1
3	CBM21-103	Pin	Ø16 x 135	1
4	CBM21-104	C Ring	S16	2
5	CBM21-105	Pin	Ø12 x 75	1
6	CBM21-106	C Ring	S12	2
7	CBM21-107	Support Bracket		1
8	CBM21-108	Shaft		1
9	CBM21-109	Locking Handle	M12 x 85	1
10	CBM21-110	Collar		1
11	CBM21-111	Lock Block		1
12	CBM21-112	Angle Pin		1
13	TS-1503031	Socket Head Cap Screw	M6 x 12	1
14	CBM21-114	Scale Bar		1
15	TS-1503051	Socket Head Cap Screw	M6 x 20	4
16	CBM21-116	Turning Handle		2
17	CBM21-117	Pin	Ø6 x 20	2
18	TS-1522011	Socket Set Screw	M5 x 6	2
19	CBM21-119	Block, Right		1
20	CBM21-120	Side Fence Body, Right		1
21	TS-2361081	Lock Washer	M8	6
22	TS-1504051	Socket Head Cap Screw	M8 x 25	6
23	CBM21-123	Magnifier		2
24	TS-1532032	Machine Screw	M4 x 10	2
25	CBM21-125	Brass Bushing		2
26	CBM21-126	Locking Handle	M10 x 30	2
27	CBM21-127	Door		1
28	CBM21-128	Pin		2
29	CBM21-129	Panel		1
30	TS-1533032	Machine Screw	M5 x 10	4
31	CBM21-131	Motor Switch		1
32	CBM21-132	Power Indicator		1
33	CBM21-133	Power Switch		1
34	CBM21-134	Position Switch		1
35	CBM21-135	Speed Control		1
36	CBM21-136	Foot Switch Box		1
37	CBM21-137	Rod		1
38	CBM21-138	Knob		1
39	CBM21-139	Scale, Right		1
40	CBM21-140	Hex Cap Screw (Full Thread)	M16 x 50	4
41	TS-154010	Hex Nut	M16	4
42	CBM21-142	Emergency Stop Button		1
43	CBM21-143	Plug		1
44	CBM21-144	Side Fence Body, Left		1
45	CBM21-145	Block, Left		1
46	CBM21-146	Door Latch		1
47	CBM21-147	Strain Relief (L Type)		1
48	CBM21-148	Protective Hose		1
49	CBM21-149	Strain Relief		1
50	CBM21-150	Scale, Left		1
51	CBM21-151	Rivet		8
52	CBM21-152	Magnetic Switch		1
53	CBM21-153	Motor Cord (switch to motor)		1
54	CBM21-154	Limit Switch Cord (switch to limit switch)		1
55	CBM21-155	Power Cord		1
56	CBM21-156	Strain Relief		1

<b>Index No.</b>	<b>Part No.</b>	<b>Description</b>	<b>Size</b>	<b>Qty</b>
57	CBM21-157	Scale		1
58	CBM21-158	Indicator		1
59	CBM21-159	Scale		1
60	CBM21-160	Strain Relief		2
61	CBM21-161	Protective Hose		1
62	3312341	Powermatic Logo (not shown)		1
63	COS18-242	Warning Label (not shown)		1

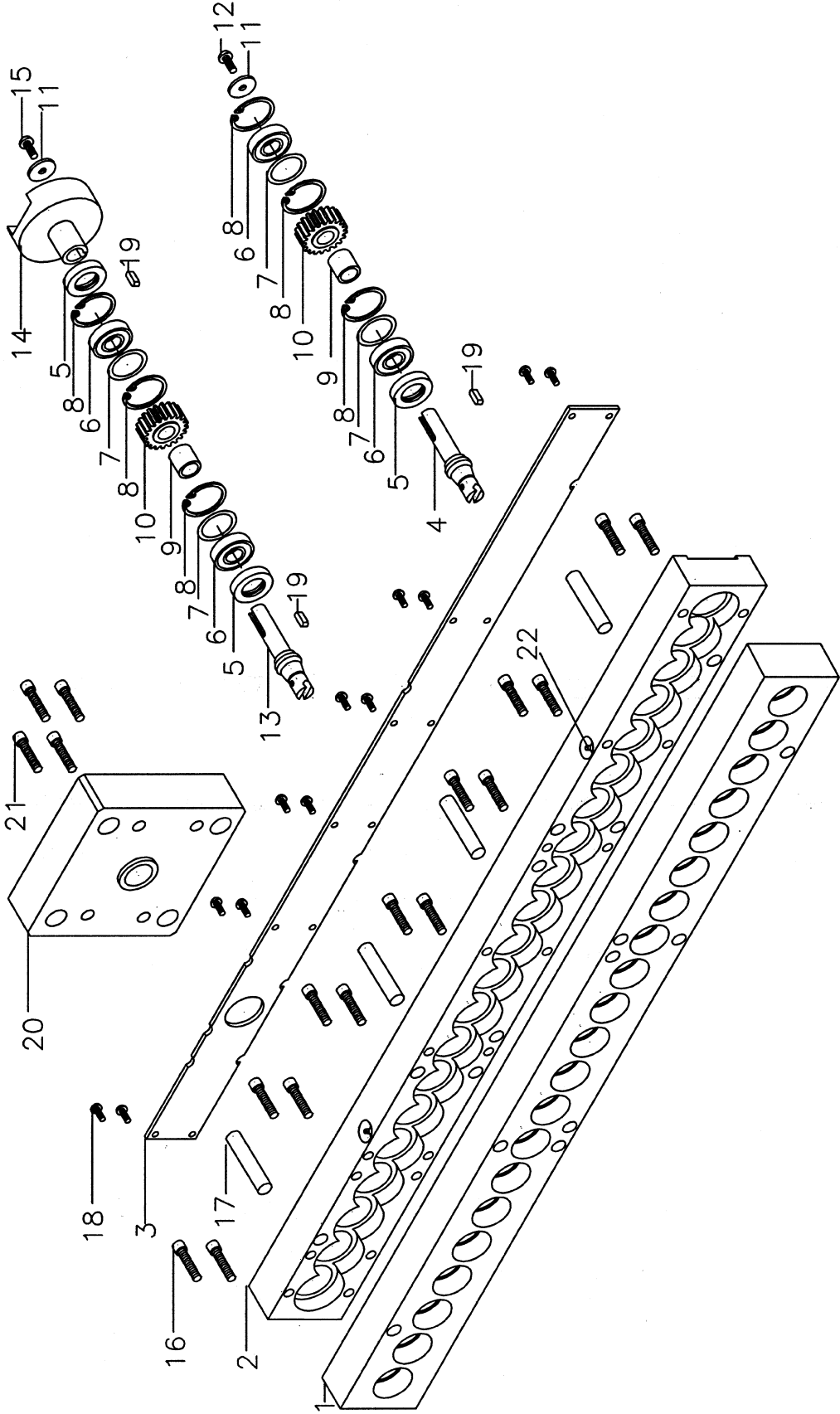
# Frame Assembly



## Parts List: Boring Head Assembly

Index No.	Part No.	Description	Size	Qty
1	CBM21-201	Bottom Gear Box		1
2	CBM21-202	Top Gear Box		1
3	CBM21-203	Gear Box Cover		1
4	CBM21-204	Spindle		20
5	CBM21-205	Oil Seal		22
6	BB-6001ZZ	Ball Bearing	6001ZZ	42
7	CBM21-207	Special Caulking Ring		42
8	CBM21-208	C Ring	R28	63
9	CBM21-209	Bushing		21
10	CBM21-210	Gear		21
11	CBM21-211	Special Caulking Ring		21
12	TS-1513021	Socket Head Flat Screw	M5 x 12	20
13	CBM21-213	Main Spindle		1
14	CBM21-214	Transmission Shaft		1
15	TS-1513031	Socket Head Flat Screw	M5 x 16	1
16	TS-1503071	Socket Head Cap Screw	M6 x 30	14
17	CBM21-217	Pin	Ø10 x 50	4
18	TS-1512021	Socket Head Flat Screw	M4 x 12	12
19	CBM21-219	Key	4 x 12	22
20	CBM21-220	Motor Base		1
21	TS-1504071	Socket Head Cap Screw	M8 x 35	4
22	CBM21-222	Grease Fitting		2

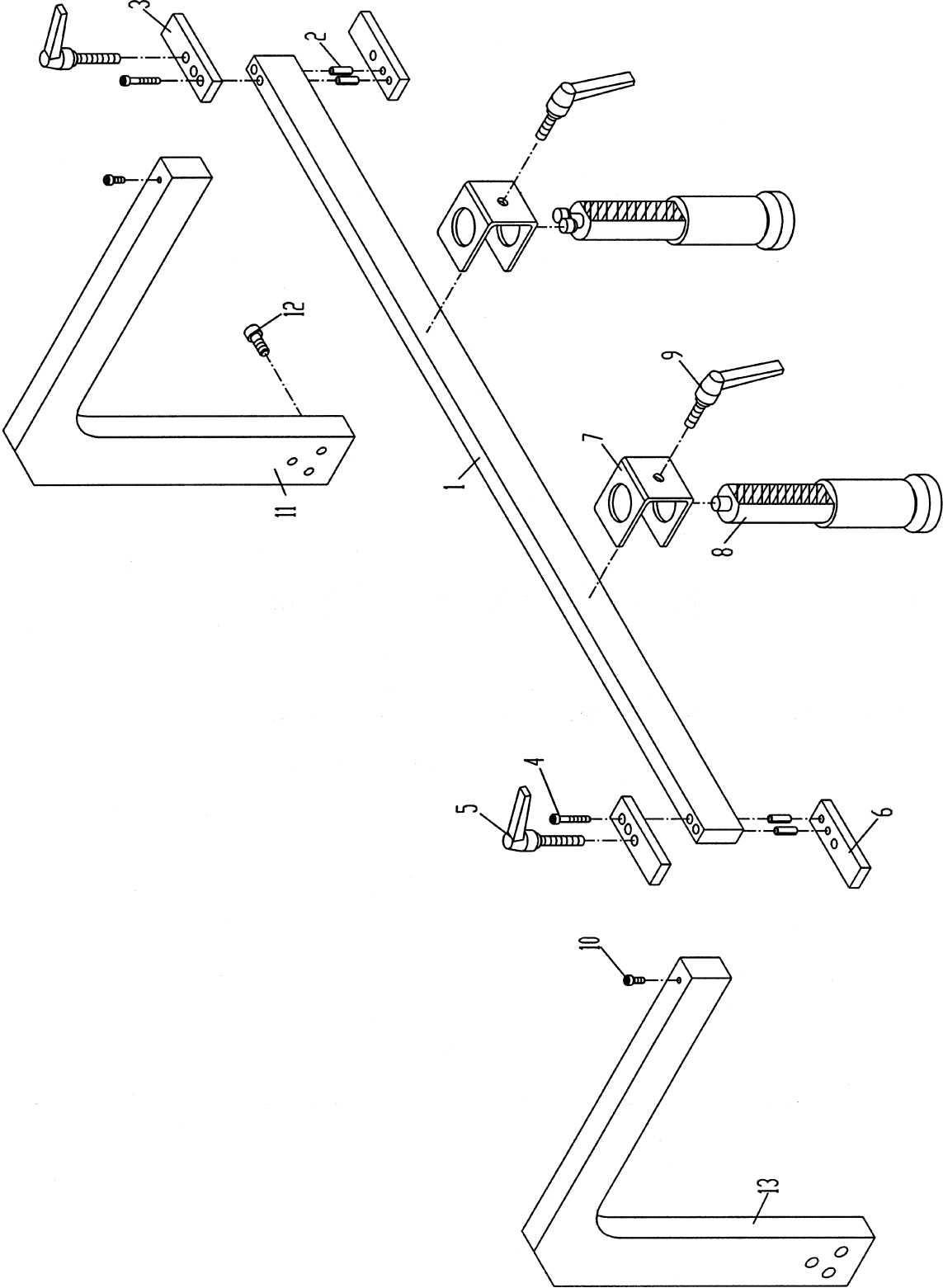
# Boring Head Assembly



## Parts List: Clamp System Assembly

Index No.	Part No.	Description	Size	Qty
1	CBM21-301	Beam		1
2	CBM21-302	Pin	Ø8 x 25	4
3	CBM21-303	Upper Block		2
4	TS-1503041	Socket Head Cap Screw	M6 x 16	4
5	CBM21-305	Locking Handle	M10 x 80	2
6	CBM21-306	Lower Block		2
7	CBM21-307	Clamp Base		2
8	CBM21-308	Clamp		2
9	CBM21-309	Locking Handle	M10 x 20	2
10	TS-1502011	Socket Head Cap Screw	M5 x 8	2
11	CBM21-311	Support Bracket, Right		1
12	TS-1505041	Socket Head Cap Screw	M10 x 30	6
13	CBM21-313	Support Bracket, Left		1

# Clamp System Assembly

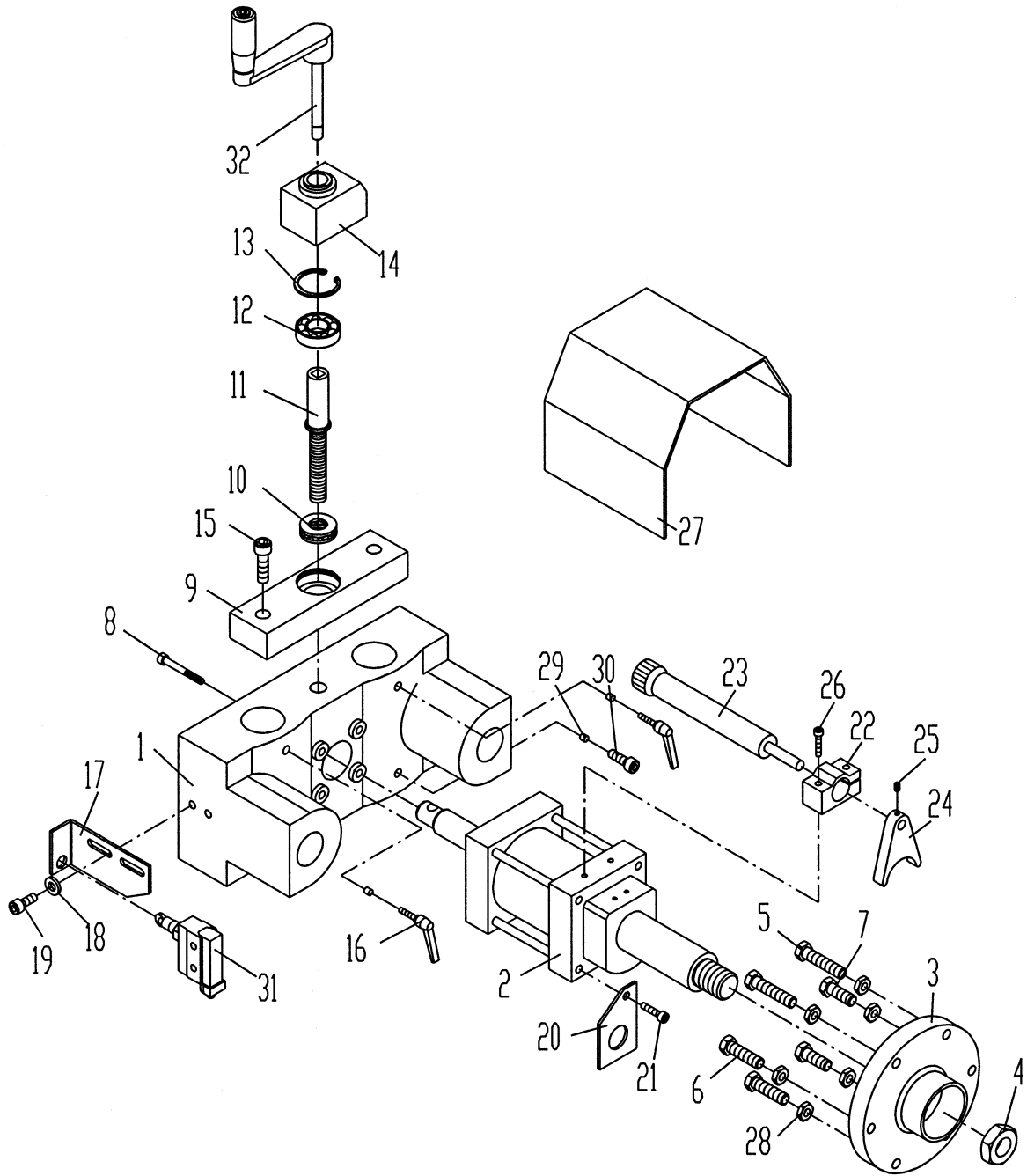


## Parts List: Drive Unit Assembly

Index No.	Part No.	Description	Size	Qty
1	CBM21-401	Cylinder Base		1
2	CBM21-402	Cylinder		1
3	CBM21-403	Depth Adjustable Plate		1
4	CBM21-404	Special Hex Nut		1
5	CBM21-405	Hex Cap Screw (Full Thread)	M10 x 60	2
6	CBM21-406	Hex Cap Screw (Full Thread)	M10 x 45	2
7	CBM21-407	Hex Cap Screw (Full Thread)	M10 x 40	2
8	TS-1504131	Socket Head Cap Screw	M8 x 70	4
9	CBM21-409	Gear Box Housing		1
10	CBM21-410	Bearing	51103	1
11	CBM21-411	Shaft		1
12	CBM21-412	Bearing	16004	1
13	CBM21-413	C Ring	R42	1
14	CBM21-414	Readout		1
15	TS-1505041	Socket Head Cap Screw	M10 x 30	2
16	CBM21-416	Locking Handle	M8 x 16	2
17	CBM21-417	Limit Switch Bracket		1
18	TS-0680021	Flat Washer	1/4"	2
19	TS-1503041	Socket Head Cap Screw	M6 x 16	2
20	CBM21-420	Bracket		1
21	TS-1504021	Socket Head Cap Screw	M8 x 12	4
22	CBM21-422	Base		1
23	CBM21-423	Hydraulic Speed Controller		1
24	CBM21-424	Stopper		1
25	TS-1522031	Socket Set Screw	M5 x 10	1
26	TS-1503081	Socket Head Cap Screw	M6 x 35	2
27	CBM21-427	Guard		1
28	TS-1540071	Hex Nut	M10	6
29	CBM21-429	Brass Bushing		4
30	TS-1504031	Socket Head Cap Screw	M8 x 16	2
31	CBM21-431	Limit Switch		1
32	CBM21-432	Crank Handle		1



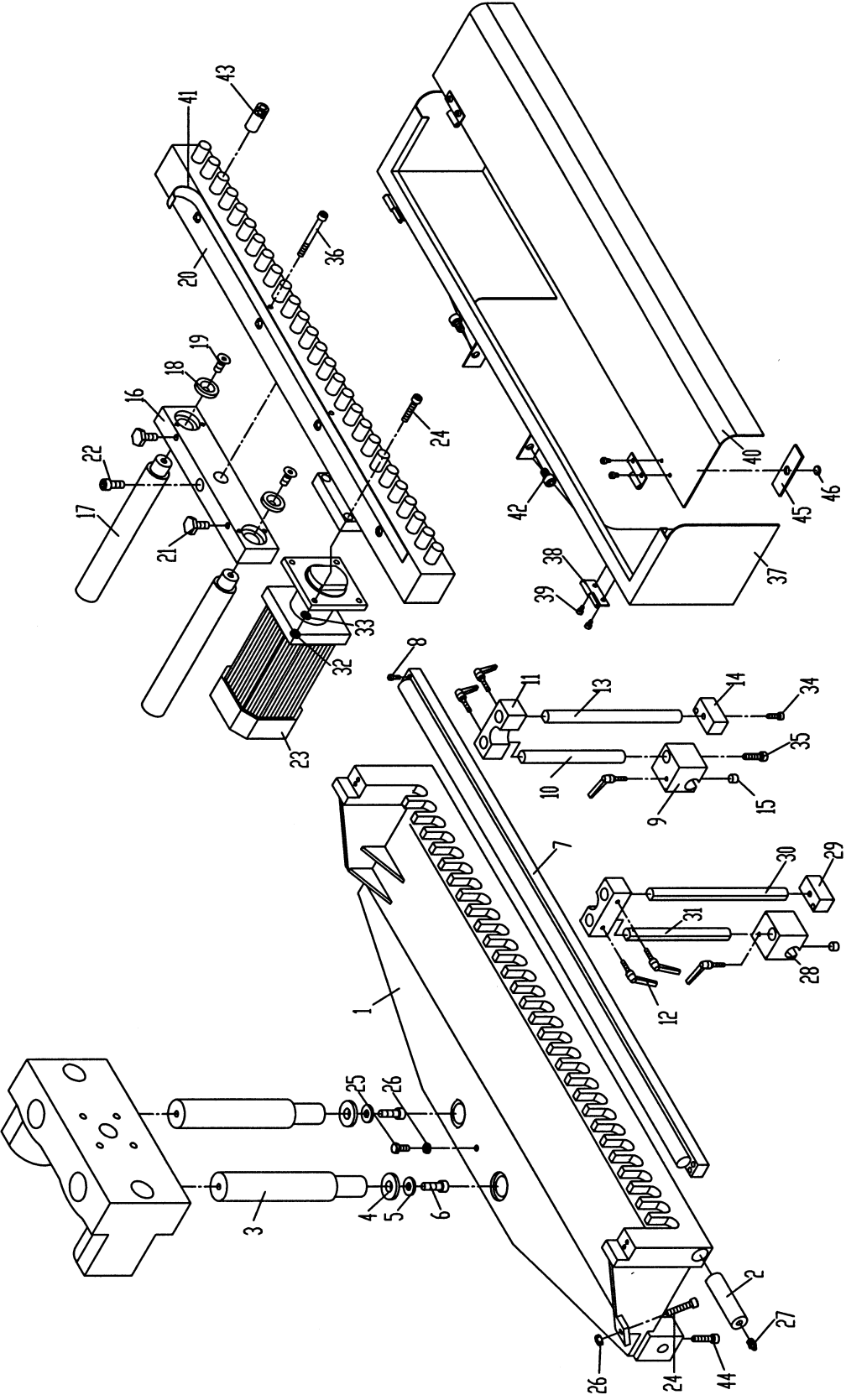
# Drive Unit Assembly



## Parts List: Motor and Frame Assembly

Index No.	Part No.	Description	Size	Qty
1	CBM21-501	Rack Plate Frame		1
2	CBM21-502	Turning Shaft		2
3	CBM21-503	Guide Bar		2
4	CBM21-504	Special Washer		2
5	TS-0680041	Flat Washer	3/8"	2
6	TS-1505041	Socket Head Cap Screw	M10 x 30	2
7	CBM21-507	Guide Bar		1
8	TS-1503031	Socket Head Cap Screw	M6 x 12	4
9	CBM21-509	Block, Right		1
10	CBM21-510	Short Scale Bar, Right		1
11	CBM21-511	Bar Supporter		2
12	CBM21-512	Locking Handle	M6 x 15	6
13	CBM21-513	Long Scale Bar, Right		1
14	CBM21-514	Stopper, Right		1
15	CBM21-515	Brass Bushing		2
16	CBM21-516	Guide Block		1
17	CBM21-517	Guide Bar		2
18	CBM21-518	Spacer		2
19	TS-1516021	Socket Head Flat Screw	M10 x 25	2
20	CBM21-520	Boring Head		1
21	CBM21-521	Special Screw		4
22	TS-1505071	Socket Head Cap Screw	M10 x 45	1
23	CBM21-523	Motor		1
24	TS-1504081	Socket Head Cap Screw	M8 x 40	5
25	TS-1490031	Hex Cap Screw	M8 x 20	1
26	TS-1540061	Hex Nut	M8	2
27	CBM21-527	Grease Fitting		2
28	CBM21-528	Block, Left		1
29	CBM21-529	Stopper, Left		1
30	CBM21-530	Long Scale Bar, Left		1
31	CBM21-531	Short Scale Bar, Left		1
32	TS-2331081	Cap Nut	M8	4
33	TS-2361081	Lock Washer	M8	4
34	TS-1503051	Socket Head Cap Screw	M6 x 20	2
35	TS-1504061	Socket Head Cap Screw	M8 x 30	2
36	TS-2238751	Socket Head Cap Screw	M8 x 75	4
37	CBM21-537	Safety Guard		1
38	CBM21-538	Hinge		2
39	CBM21-539	Socket Head Cap Screw	M5 X 5	8
40	CBM21-540	PC Cover		1
41	CBM21-541	Label, Bit Rotation		1
42	CBM21-542	Socket Head Cap Screw	M10 X 12	2
43	CBM21-543	Quick Chuck		21
44	TS-1504071	Socket Head Cap Screw	M8 x 35	1
45	CBM21-545	Magnet (Square)		2
46	CBM21-546	Magnet (Round)		2

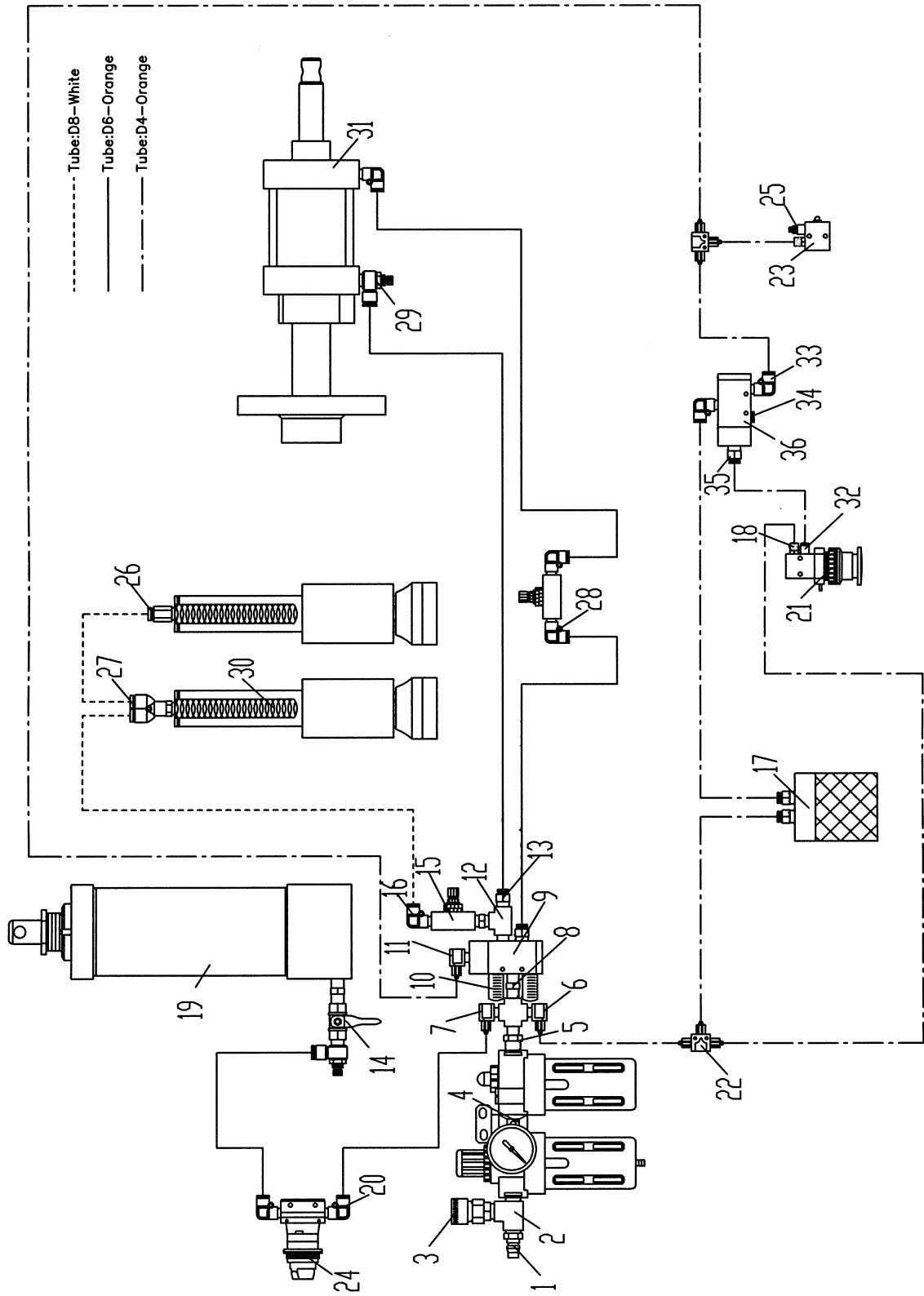
Motor and Frame Assembly



## Parts List: Pneumatic Diagram

Index No.	Part No.	Description	Size	Qty
1	CBM21-601	Quick Fitting		1
2	CBM21-602	Connection Block		1
3	CBM21-603	Quick Fitting		1
4	CBM21-604	F.R.L. Unit		1
5	CBM21-605	Jointer	3/8" x 1/4"	1
6	CBM21-606	Tube Fitting (L type)	1/4" x Ø 4	1
7	CBM21-607	Tube Fitting (L type)	1/4" x Ø 6	1
8	CBM21-608	Jointer	1/4" x 1/4"	3
9	CBM21-609	Connector		1
10	CBM21-610	Silencer	1/8"	2
11	CBM21-611	Tube Fitting (L type)	1/8" x Ø 4	1
12	CBM21-612	Connection Block	1/4"	1
13	CBM21-613	Quick Tube Fitting (I type)	1/4" x Ø 6	2
14	CBM21-614	Ball Valve	1/4"	1
15	CBM21-615	Air Regulator	1/4"	2
16	CBM21-616	Quick Tube Fitting (L type)	1/4" x Ø 8	1
17	CBM21-617	Pedal Switch		1
18	CBM21-618	Golden Tube Fitting (I type)	Ø 5 x Ø 4	2
19	CBM21-102	Tilting Cylinder		
20	CBM21-620	Quick Tube Fitting (L type)	1/8" x Ø 6	2
21	CBM21-142	Emergency Stop Button		
22	CBM21-622	Tube Fitting (T type)	Ø 4 x Ø 4 x Ø 4	2
23	CBM21-623	Limit Switch		1
24	CBM21-134	Position Switch	1/8"	
25	CBM21-625	Air Regulator	Ø 5	1
26	CBM21-626	Quick Tube Fitting (I type)	1/4" x Ø 8	1
27	CBM21-627	Quick Tube Fitting (Y type)	1/4" x Ø 8	1
28	CBM21-628	Quick Tube Fitting (L type)	1/4" x Ø 6	3
29	CBM21-629	Air Regulator	1/4" x Ø 6	2
30	CBM21-308	Clamp		
31	CBM21-402	Cylinder		
32	CBM21-632	Quick Tube Fitting (I type)	Ø 5 x Ø 4	1
33	CBM21-633	Quick Tube Fitting (L type)	1/8" x Ø 4	2
34	CBM21-634	Special Screw	1/8"	1
35	CBM21-635	Quick Tube Fitting (I type)	1/8" x Ø 4	3
36	CBM21-636	Connector	1/8"	1

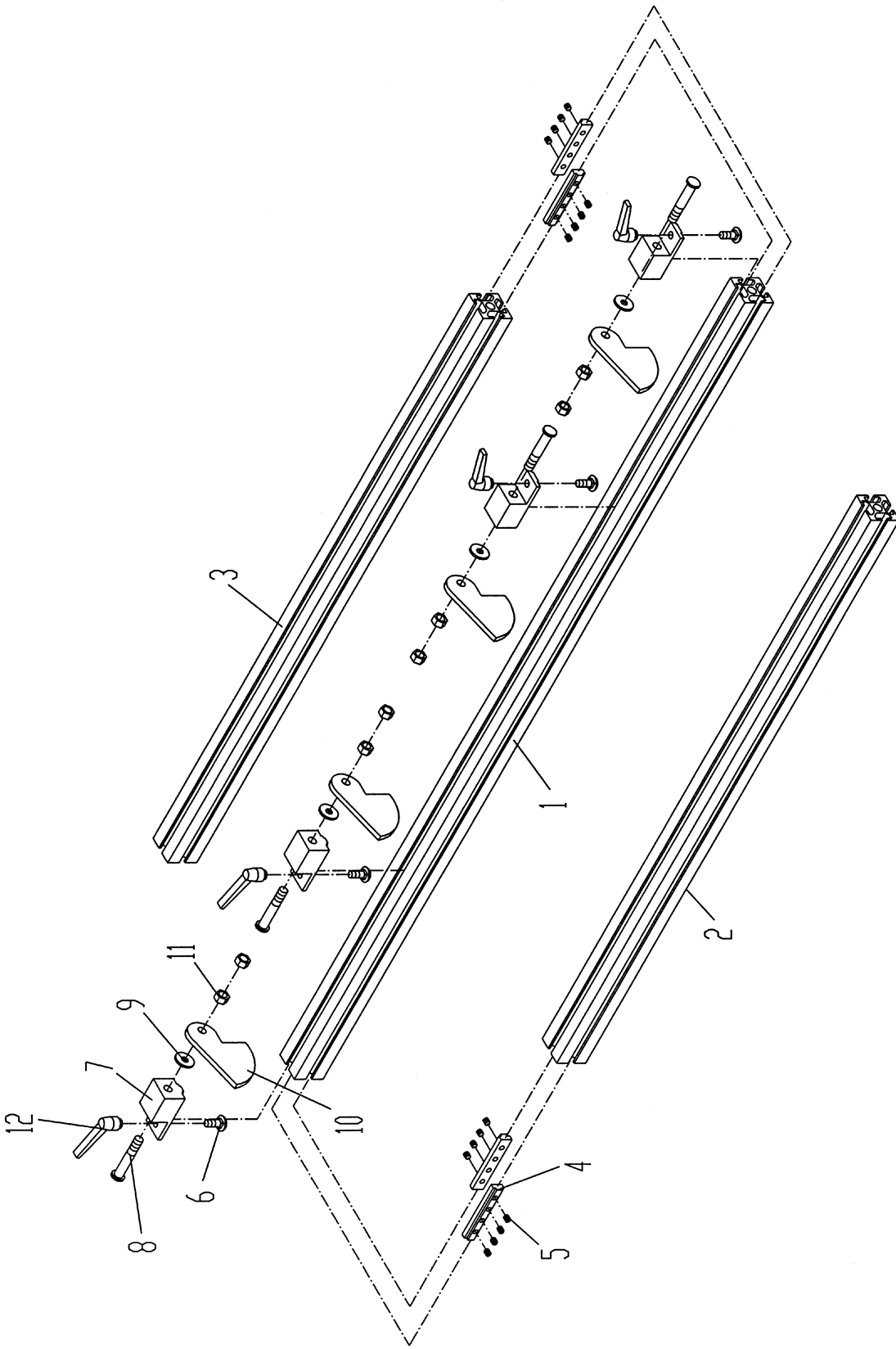
# Pneumatic Diagram



## Parts List: Fence and Stops

Index No.	Part No.	Description	Size	Qty
1	LBM21-120	Fence		1
2	LBM21-143	Extended Fence, Left		1
3	LBM21-146	Extended Fence, Right		1
4	LBM21-144	Connecting Block		4
5	TS-2276081	Socket Set Screw	M6 x 8	16
6	LBM21-111	Carriage Bolt	M8 x 20	4
7	LBM21-126	Stop Block Body		4
8	LBM21-127	Special Bolt		4
9	TS-0680031	Flat Washer	5/16"	4
10	LBM21-129	Stop Plate		4
11	TS-1540061	Hex Nut	M8	8
12	LBM21-116	Locking Handle	M8	4

Fence and Stops



# Electrical Connections

