

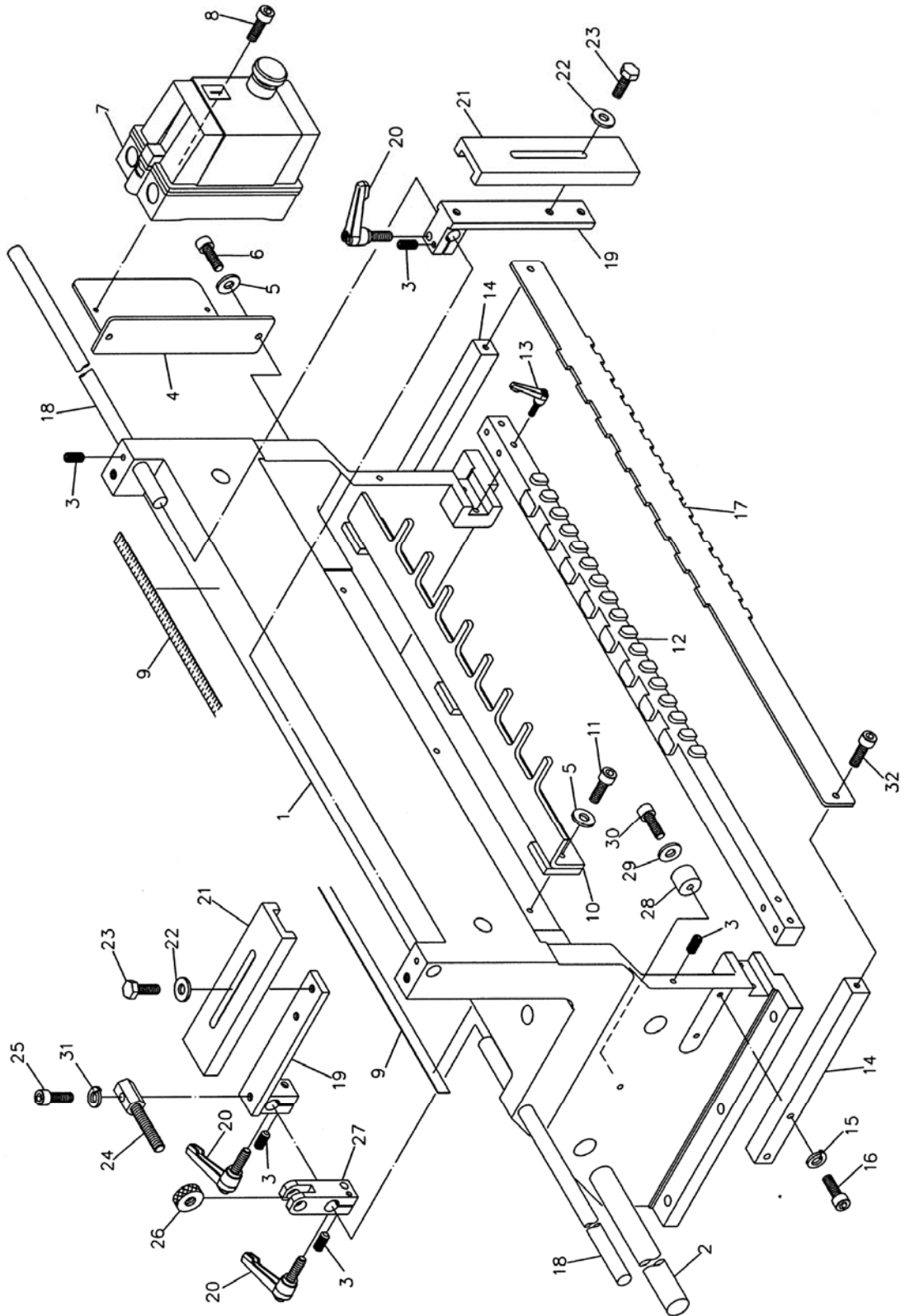
Replacement Parts

Replacement parts are listed on the following pages. To order parts or reach our service department, call 1-800-274-6848, Monday through Friday (see our website for business hours, www.powermatic.com). Having the Model Number and Serial Number of your machine available when you call will allow us to serve you quickly and accurately.

Parts List: Base Assembly

Index No.	Part No.	Description	Size	Qty
1	DT65-101	Worktable		1
2	DT65-102	Base Guide Rod		1
3	TS-1523041	Socket Set Screw	M6x12	13
4	DT65-104	Switch Bracket		1
5	TS-1550041	Flat Washer	M6	5
6	TS-1503041	Socket Head Cap Screw	M6x16	2
7	DT65-107	Magnetic Switch		1
8	TS-1501041	Socket Head Cap Screw	M4x12	2
9	DT65-109	Scale		2
10	DT65-110	Fixed Chaser	2" pitch	1
	DT65-110A	Fixed Chaser	2.5" pitch	1
	DT65-110B	Fixed Chaser	3" pitch	1
11	TS-1503061	Socket Head Cap Screw	M6x25	3
12	DT65-112	Template		1
13	DT45-105	Locking Handle	M6x35	2
14	DT65-114	Fixing Bar		2
15	TS-2361061	Lock Washer	M6	4
16	TS-1503081	Socket Head Cap Screw	M6x35	4
17	DT65-117	Indication Template		1
18	DT65-118	Sliding Rod		2
19	DT65-119	Fence		4
20	DT45-120	Locking Handle	M8x25	5
21	DT65-121	Buffer Pad		4
22	TS-1550061	Flat Washer	M8	8
23	TS-1490031	Hex Cap Screw	M8x20	8
24	DT45-126	Adjustment Screw		1
25	TS-1504061	Socket Head Cap Screw	M8x30	1
26	DT45-128	Knurled Knob		1
27	DT45-129	Adjustment Seat		1
28	DT45-142	Buffer Pad		2
29	TS-1550041	Flat Washer	M6	2
30	TS-1503051	Socket Head Cap Screw	M6x20	2
31	TS-2361081	Lock Washer	M8	1
32	TS-1503031	Socket Head Cap Screw	M6x12	2

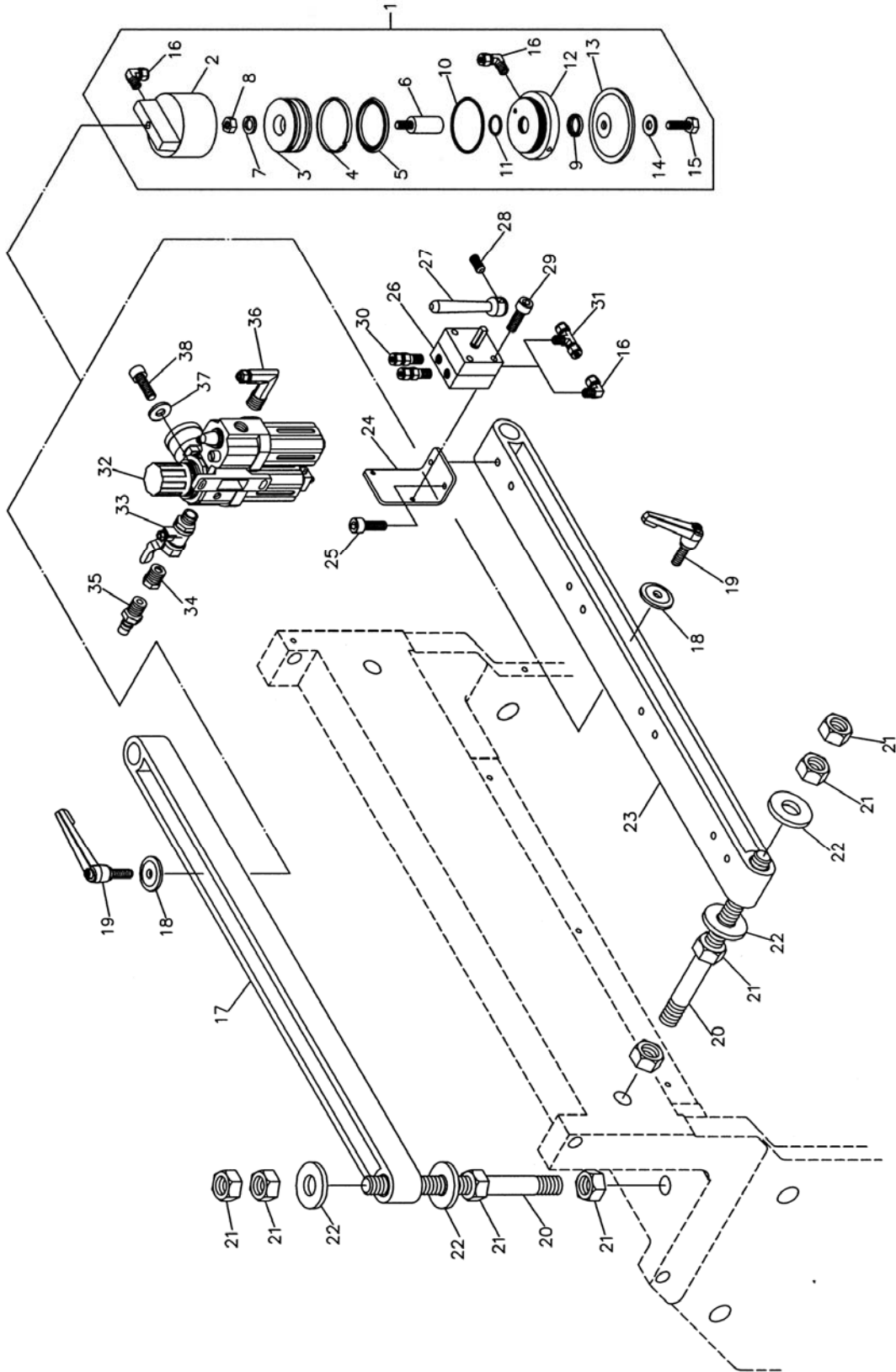
Base Assembly



Parts List: Hold-Down Assembly

Index No.	Part No.	Description	Size	Qty
1	DT65-301	Cylinder Assembly (Index #2 thru #16)		4
2	DT65-302	Cylinder Body		4
3	DT65-303	Piston		4
4	DT65-304	Wearing		4
5	DT65-305	Piston Backing		4
6	DT65-306	Piston Rod		4
7	TS-2361121	Lock Washer	M12	4
8	TS-1540081	Hex Nut	M12	4
9	DT65-309	Locking Piece		4
10	DT65-310	O-Ring		4
11	DT65-311	O-Ring		4
12	DT65-312	End Cover		4
13	DT65-313	Clamping Disc		4
14	TS-1550061	Flat Washer	M8	4
15	TS-1490021	Hex Cap Screw	M8x16	4
16	DT65-316	Male Elbow Connector		9
17	DT65-317	Holder Bracket		1
18	DT65-318	Special Washer		4
19	DT65-319	Locking Handle	M10x35	4
20	DT65-320	Stud		4
21	TS-2310201	Hex Nut	M20	16
22	TS-1550111	Flat Washer	M20	8
23	DT65-323	Holder Bracket		1
24	DT65-324	Fixing Bracket		4
25	TS-1502031	Socket Head Cap Screw	M5x12	8
26	DT65-326	Control Valve		4
27	DT65-327	Handle		4
28	TS-1522011	Socket Set Screw	M5x6	4
29	TS-1502101	Socket Head Cap Screw	M5x45	8
30	DT65-330	Male Connector	PT-1/8"-Ø6	8
31	DT65-331	T- Connector	PT-1/8"-Ø6	3
32	DT65-332	Air Supply Unit		1
33	DT65-333	Air Control Valve	PT-1/8"	1
34	DT65-334	Adapter	3/8"X1/4"	1
35	DT65-335	Male Coupling	PT-1/4"	1
36	DT65-336	Male Elbow Connector	PT-3/8"-Ø6	1
37	TS-1550041	Flat Washer	M6	2
38	TS-1503041	Socket Head Cap Screw	M6x16	2
	JPU0406Z	Air Hose, Black (not shown)	Ø6mm x ø4mm	5m roll
	JPU0406W	Air Hose, Clear (not shown)	Ø6mm x ø4mm	2m roll

Hold-Down Assembly

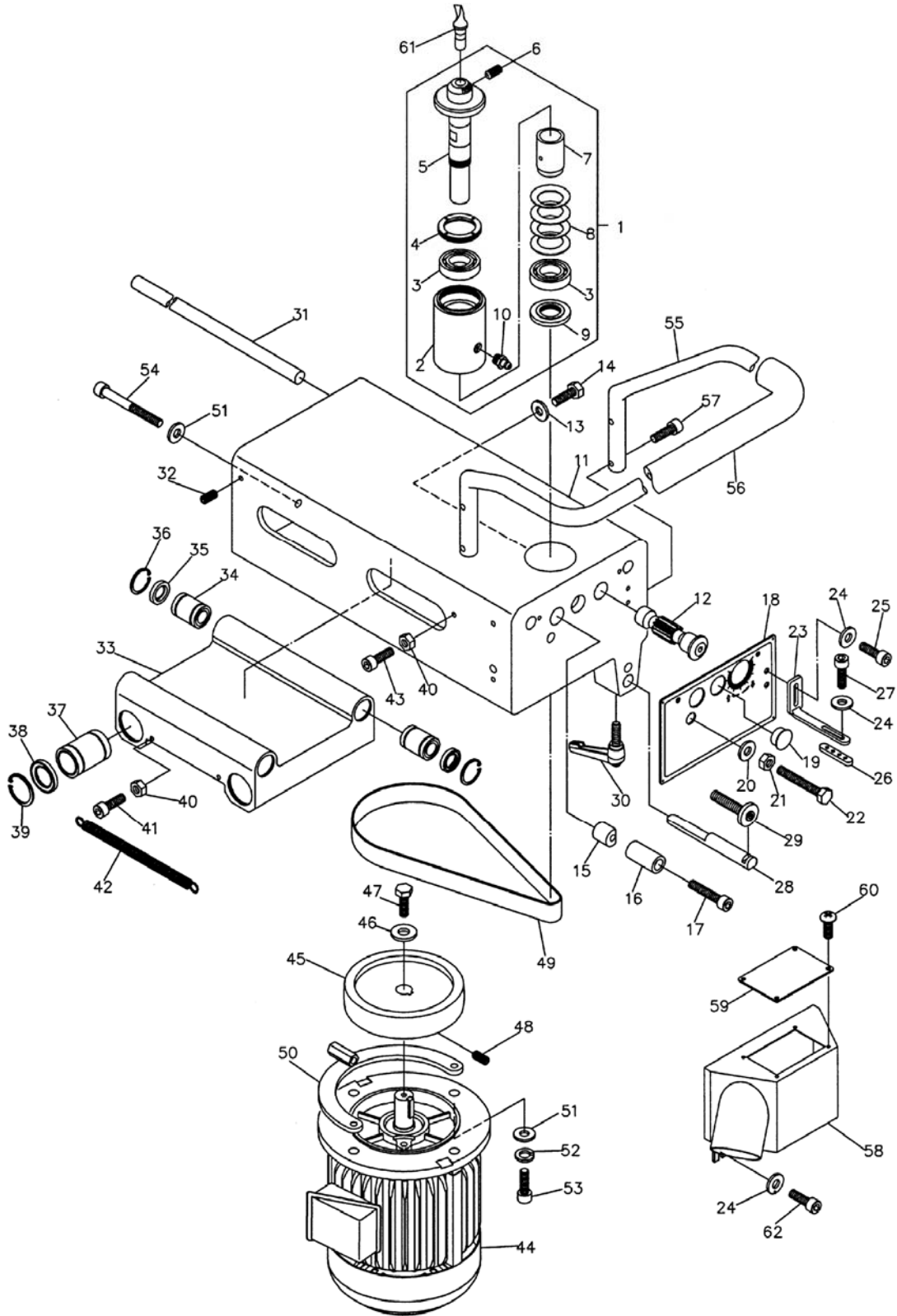


Parts List: Headstock Assembly

Index No.	Part No.	Description	Size	Qty
1	DT45-201	Spindle Assembly (Index #2 thru #10)		1
2	DT45-202	Spindle Bearing Housing		1
3	DT45-203	Ball Bearing (special)	6005 TB.P63	2
4	DT45-204	Fixing Nut		1
5	DT45-205	Eccentric Spindle		1
6	TS-1524021	Socket Set Screw	M8x10	2
7	DT45-207	Spacer		1
8	DT45-208	Disc Spring		4
9	DT45-209	Fixing Nut		1
10	DT45-210	Grease Nipple		1
11	DT65-211	Spindle Slide Seat		1
12	DT45-212	Gear Shaft		1
13	TS-1550061	Flat Washer	M8	1
14	TS-1490031	Hex Cap Screw	M8x20	1
15	DT45-215	Clamping Piece		1
16	DT45-216	Bushing		1
17	TS-1504121	Socket Head Cap Screw	M8x60	1
18	DT65-218	Panel		1
19	DT45-219	Plug		1
20	TS-1550071	Flat Washer	M10	1
21	TS-1540071	Hex Nut	M10	1
22	DT65-222	Hex Head Bolt	M10x150	1
23	DT65-223	Indication Bracket		1
24	TS-1550031	Flat Washer	M5	6
25	TS-1502041	Socket Head Cap Screw	M5x16	2
26	DT65-226	Adjustment Piece		1
27	TS-1501031	Socket Head Cap Screw	M4x10	2
28	DT45-247	Tracer Pin		1
29	DT45-248	Adjustment Screw		1
30	DT45-246	Locking Handle	M6x20	1
31	DT45-223	Guide Rod		2
32	TS-1523041	Socket Set Screw	M6x12	4
33	DT45-225	Carriage		1
34	DT45-226	Linear Bushing	LM16UU	4
35	DT45-227	Seal	16x28x7	4
36	DT45-228	Retaining Ring	R28	4
37	DT45-229	Linear Bushing	LM25UU	4
38	DT45-230	Seal	25x40x7	4
39	DT45-231	Retaining Ring	R40	4
40	TS-1540031	Hex Nut	M5	2
41	TS-1502081	Socket Head Cap Screw	M5x35	1
42	DT45-234	Spring		1
43	TS-1502051	Socket Head Cap Screw	M5x20	1
44	DT65-244	Motor		1
45	DT45-236	Motor Pulley		1
46	DT45-237	Fixing Washer		1
47	TS-1482041	Hex Cap Screw	M6x20	1
48	TS-1522031	Socket Set Screw	M5x10	1
49	DT45-240	Flat Belt	670-25	1
50	DT45-241	Belt Tension Adjustment Holder		1
51	TS-1550061	Flat Washer	M8	3
52	TS-2361081	Lock Washer	M8	2
53	TS-1504071	Socket Head Cap Screw	M8x35	2
54	TS-2238911	Socket Head Cap Screw	M8x100	1
55	DT45-249	Handle		1
56	DT45-250	Sponge Coating		1
57	TS-1503071	Socket Head Cap Screw	M6x30	4

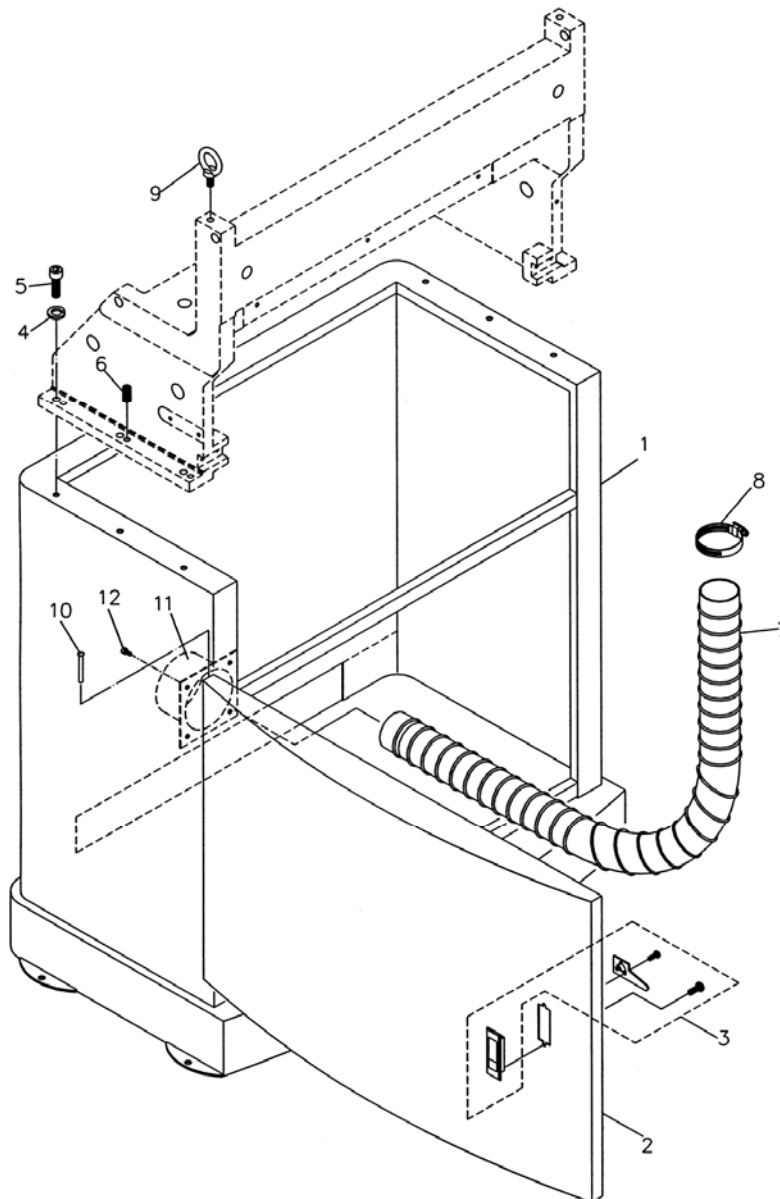
58	DT65-258	Dust Hood	1
59	DT45-255	Window	1
60	TS-2171012	Machine Screw	M4x6 4
61	DT45-257	Cutter	1
62	TS-1502031	Socket Head Cap Screw	M5x12 2

Headstock Assembly



Parts List: Cabinet Assembly

Index No.	Part No.	Description	Size	Qty
1	DT65-401	Cabinet		1
2	DT65-402	Door		1
3	DT45-303	Door Latch		1
4	TS-2361081	Lock Washer	M8	6
5	TS-1504061	Socket Head Cap Screw	M8x30	6
6	TS-1524021	Socket Set Screw	M8x10	6
7	DT65-407	Flexible Hose	2-1/2"	1
8	DT45-308	Hose Clamp	2-1/2"	2
9	DT45-309	Eye Bolt	M10	2
10	DT45-310	Pin		2
11	DT45-311	Dust Chute		1
12	TS-1502031	Socket Head Cap Screw	M5x12	4



Electrical Connections

