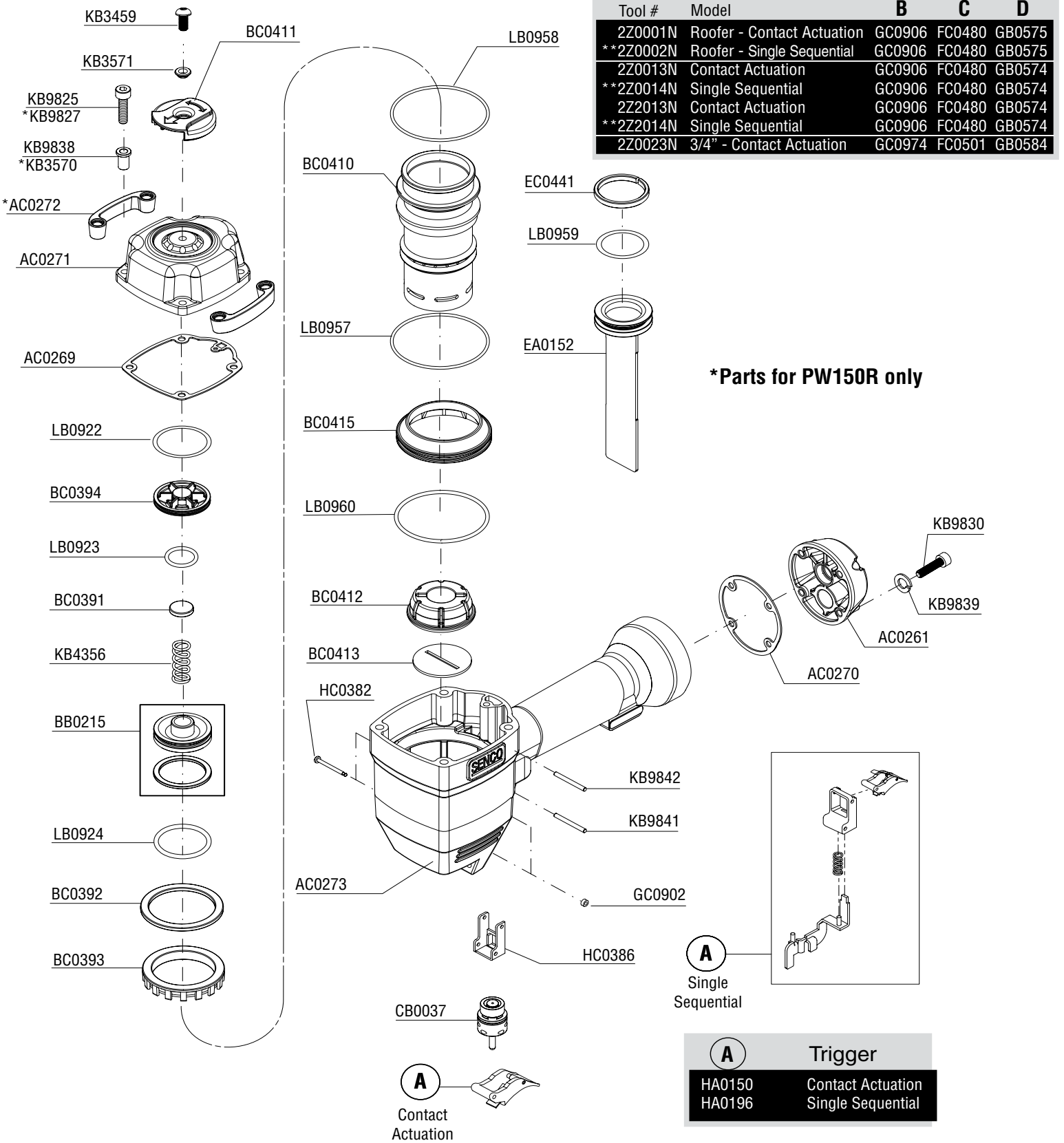
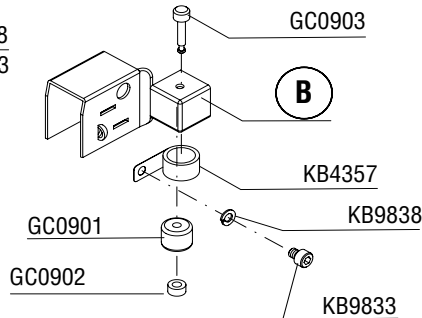
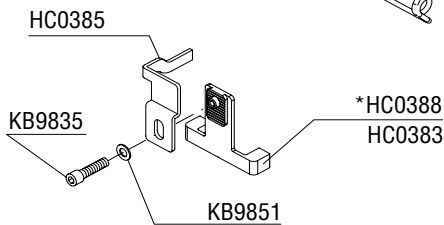
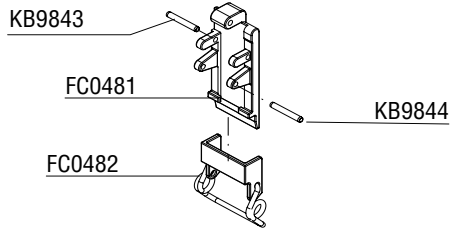
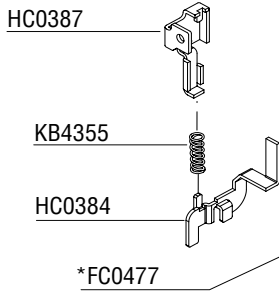
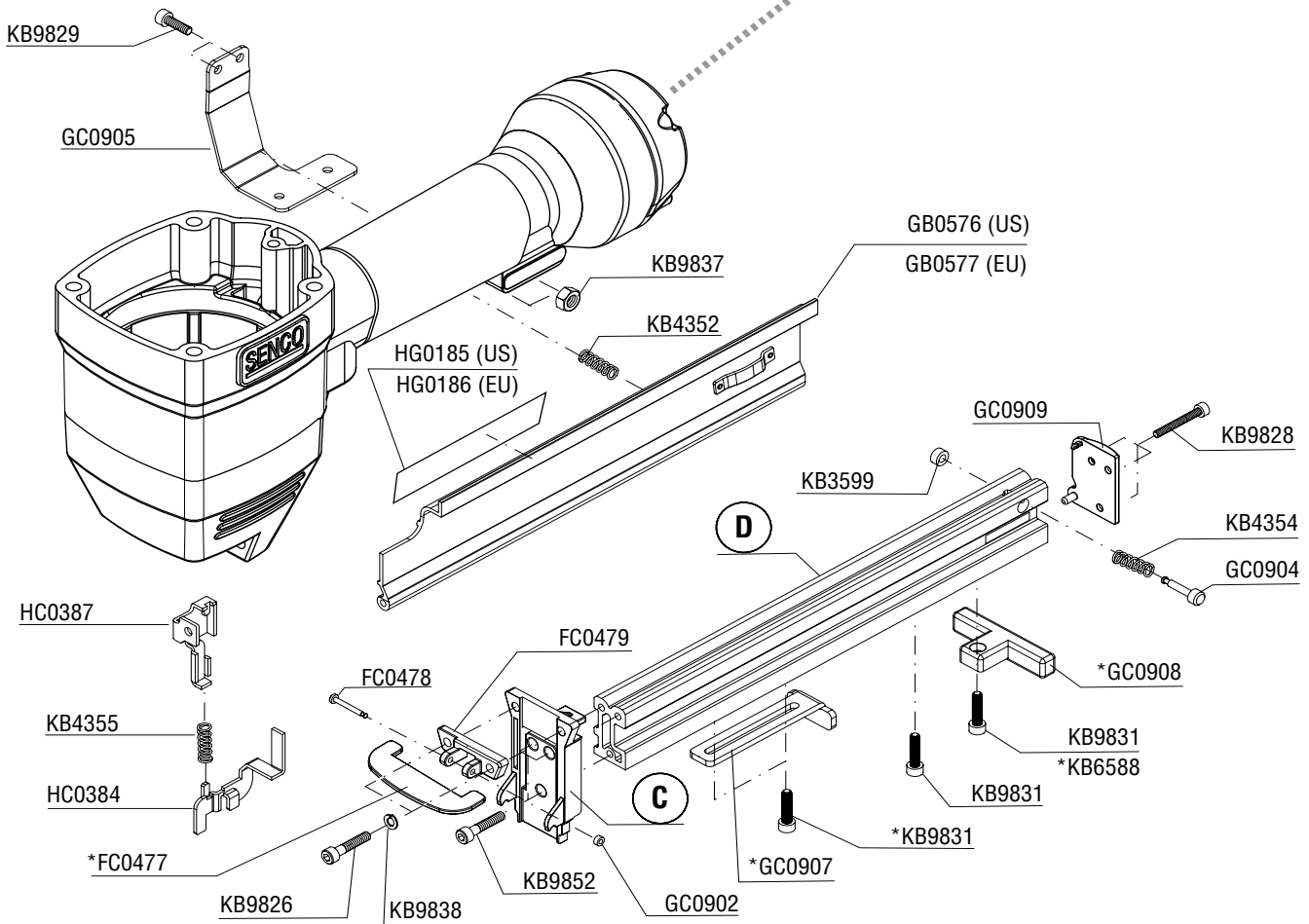


PW150/PW150-3/4"/PW150R Senco®



PW150/PW150-3/4"/PW150R

SENCO

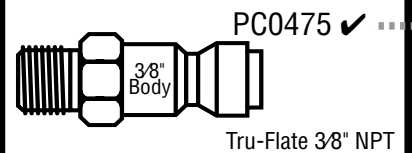
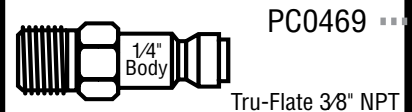
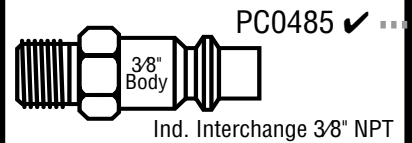


Kits Available

- YK0432 3/4" Guide Body
- YK0436 Double Length Magazine

Available Plugs

(Not Included with Tool)



✓ Recommended Plugs

Plugs shown smaller than actual size

PW150/PW150-3/4"/PW150R

REPLACEMENT PARTS LIST • LISTA DE PARTES DE REPUESTO • ERSATSTEILE-LISTE • LISTE DE PIÈCES DE RECHANGE

| PART NO. | DESCRIPTION | DESCRIPCIÓN | BESCHREIBUNG | DÉSIGNATION |
|----------|---------------------------|--------------------|----------------------------|-------------------------|
| AC0261 | CAP | TAPA | KAPPE | BOUCHON |
| AC0269 | SEAL | SELLO | DICHTUNG | JOINT |
| AC0270 | SEAL | SELLO | DICHTUNG | JOINT |
| AC0271 | CAP | TAPA | KAPPE | BOUCHON |
| AC0272 | SHIELD (PW150R) | PLACA | PLATTE | PLAQUE |
| AC0273 | MAIN BODY | CARCASA | GEHÄUSE | CORPS |
| BB0215 | VALVE ASSEMBLY | ASAMBLE DE VÁLVULA | VENTIL-ZUSAMMENBAU | VALVE D'ASSEMBLEE |
| BC0391 | SEAL | SELLO | DICHTUNG | JOINT |
| BC0392 | RETAINER | JUNTA TÓRICA | SICHERUNGSRING | RETENUE |
| BC0393 | RETAINER | JUNTA TÓRICA | SICHERUNGSRING | RETENUE |
| BC0394 | VALVE | VÁLVULA | VENTIL | VALVE |
| BC0410 | CYLINDER | CILINDRO | ZYLINDER | CYLINDRE |
| BC0411 | DEFLECTOR | DESVIADOR | ABWEISER | DÉFLECTEUR |
| BC0412 | STOP | TOPE | PUFFER | ARRÊT |
| BC0413 | SEAL | SELLO | DICHTUNG | JOINT |
| BC0415 | RETAINER | JUNTA TÓRICA | SICHERUNGSRING | RETENUE |
| CB0037 | VALVE ASSEMBLY | ASAMBLE DE VÁLVULA | VENTIL-ZUSAMMENBAU | VALVE D'ASSEMBLEE |
| EA0152 | PISTON ASSEMBLY | ASAMBLE DE PISTON | KOLBEN-ZUSAMMENBAU | ENSEMBLE PISTON-COUREAU |
| EC0441 | SEAL | SELLO | DICHTUNG | JOINT |
| FC0477 | SHIELD (PW150R) | PLACA | PLATTE | PLAQUE |
| FC0478 | PIN | PASADOR | STIFT | GOUPILLE |
| FC0479 | BRACKET | SOPORTE | HALTERUNG | SUPPORT DE FIXATION |
| FC0480 | GUIDE BODY | PLACA DE NARIZ | KLAMMERFÜHRUNG | FRONT |
| FC0481 | COVER | CUBIERTA | ABDECKUNG | COUVERCLE |
| FC0482 | LATCH | UÑETA | VERSCHLUSS | DOIGT DE RETENUE |
| FC0501 | GUIDE BODY | PLACA DE NARIZ | KLAMMERFÜHRUNG | FRONT |
| GB0574 | RAIL ASSEMBLY (PW150) | ASAMBLE DE CARRIL | SCHIENE-ZUSAMMENBAU | RAIL D'ASSEMBLÉE |
| GB0575 | RAIL ASSEMBLY (PW150R) | ASAMBLE DE CARRIL | SCHIENE-ZUSAMMENBAU | RAIL D'ASSEMBLÉE |
| GB0576 | DOOR ASSEMBLY (US) | ASAMBLE DE PUERTA | ABDECKSCHIEBER-ZUSAMMENBAU | ENSEMBLE PORTE |
| GB0577 | DOOR ASSEMBLY (EU) | ASAMBLE DE PUERTA | ABDECKSCHIEBER-ZUSAMMENBAU | ENSEMBLE PORTE |
| GB0584 | RAIL ASSEMBLY (PW150-3/4) | ASAMBLE DE CARRIL | SCHIENE-ZUSAMMENBAU | RAIL D'ASSEMBLÉE |
| GC0901 | GUIDE | GUÍA | FÜHRUNG | GUIDE |
| GC0902 | RETAINER | JUNTA TÓRICA | SICHERUNGSRING | RETENUE |
| GC0903 | PIN | PASADOR | STIFT | GOUPILLE |
| GC0904 | PIN | PASADOR | STIFT | GOUPILLE |
| GC0905 | BRACKET | SOPORTE | HALTERUNG | SUPPORT DE FIXATION |
| GC0906 | FEEDER SHOE | ALIMENTADOR | NAGELSCHIEBER | POUSSOIR |
| GC0907 | GUIDE (PW150R) | GUÍA | FÜHRUNG | GUIDE |
| GC0908 | GUIDE (PW150R) | GUÍA | FÜHRUNG | GUIDE |
| GC0909 | COVER | CUBIERTA | ABDECKUNG | COUVERCLE |
| GC0974 | FEEDER SHOE | ALIMENTADOR | NAGELSCHIEBER | POUSSOIR |
| HA0150 | TRIGGER ASSEMBLY | ASAMBLE DE GATILLO | AUSLÖSER-ZUSAMMENBAU | ENSEMBLE GÂCHETTE |
| HA0196 | TRIGGER ASSEMBLY | ASAMBLE DE GATILLO | AUSLÖSER-ZUSAMMENBAU | ENSEMBLE GÂCHETTE |
| HC0382 | PIN | PASADOR | STIFT | GOUPILLE |
| HC0383 | SAFETY ELEMENT | SEGURO | SICHERHEITSVORRICHTUNG | PALPEUR DE SÉCURITÉ |
| HC0384 | SAFETY ELEMENT | SEGURO | SICHERHEITSVORRICHTUNG | PALPEUR DE SÉCURITÉ |
| HC0385 | SAFETY ELEMENT | SEGURO | SICHERHEITSVORRICHTUNG | PALPEUR DE SÉCURITÉ |
| HC0386 | GUIDE | GUÍA | FÜHRUNG | GUIDE |
| HC0387 | COVER | CUBIERTA | ABDECKUNG | COUVERCLE |
| HC0388 | SAFETY ELEMENT (PW150R) | SEGURO | SICHERHEITSVORRICHTUNG | PALPEUR DE SÉCURITÉ |
| HG0185 | SAFETY LABEL (US) | ETIQUETA | AUFKLEBER | ÉTIQUETTE |
| HG0186 | SAFETY LABEL (EU) | ETIQUETA | AUFKLEBER | ÉTIQUETTE |
| KB3459 | SCREW | TORNILLO | SCHRAUBE | VIS |
| KB3570 | WASHER (PW150R) | ARANDELA | SCHIBE | RONDELLE |
| KB3571 | WASHER | ARANDELA | SCHIBE | RONDELLE |
| KB3599 | RETAINER | JUNTA TÓRICA | SICHERUNGSRING | RETENUE |
| KB4352 | SPRING | RESORTE | FEDER | RESSORT |
| KB4354 | SPRING | RESORTE | FEDER | RESSORT |
| KB4355 | SPRING | RESORTE | FEDER | RESSORT |
| KB4356 | SPRING | RESORTE | FEDER | RESSORT |
| KB4357 | SPRING | RESORTE | FEDER | RESSORT |
| KB6588 | SCREW (PW150R) | TORNILLO | SCHRAUBE | VIS |
| KB9825 | SCREW | TORNILLO | SCHRAUBE | VIS |
| KB9826 | SCREW | TORNILLO | SCHRAUBE | VIS |
| KB9827 | SCREW (PW150R) | TORNILLO | SCHRAUBE | VIS |
| KB9828 | SCREW | TORNILLO | SCHRAUBE | VIS |
| KB9829 | SCREW | TORNILLO | SCHRAUBE | VIS |
| KB9830 | SCREW | TORNILLO | SCHRAUBE | VIS |
| KB9831 | SCREW | TORNILLO | SCHRAUBE | VIS |
| KB9833 | SCREW | TORNILLO | SCHRAUBE | VIS |
| KB9835 | SCREW | TORNILLO | SCHRAUBE | VIS |
| KB9837 | NUT | TUERCA | MUTTER | ÉCROU |
| KB9838 | WASHER | ARANDELA | SCHIBE | RONDELLE |
| KB9839 | WASHER | ARANDELA | SCHIBE | RONDELLE |
| KB9841 | PIN | PASADOR | STIFT | GOUPILLE |
| KB9842 | PIN | PASADOR | STIFT | GOUPILLE |
| KB9843 | PIN | PASADOR | STIFT | GOUPILLE |
| KB9844 | PIN | PASADOR | STIFT | GOUPILLE |
| KB9851 | WASHER | ARANDELA | SCHIBE | RONDELLE |
| KB9852 | SCREW | TORNILLO | SCHRAUBE | VIS |
| LB0922 | SEAL | SELLO | DICHTUNG | JOINT |
| LB0923 | SEAL | SELLO | DICHTUNG | JOINT |
| LB0924 | SEAL | SELLO | DICHTUNG | JOINT |
| LB0957 | SEAL | SELLO | DICHTUNG | JOINT |
| LB0958 | SEAL | SELLO | DICHTUNG | JOINT |
| LB0959 | SEAL | SELLO | DICHTUNG | JOINT |
| LB0960 | SEAL | SELLO | DICHTUNG | JOINT |

Questions? Comments? call SENCO's toll-free Action-line: 1-800-543-4596 (North & South America only) or e-mail: toolprof@senco.com