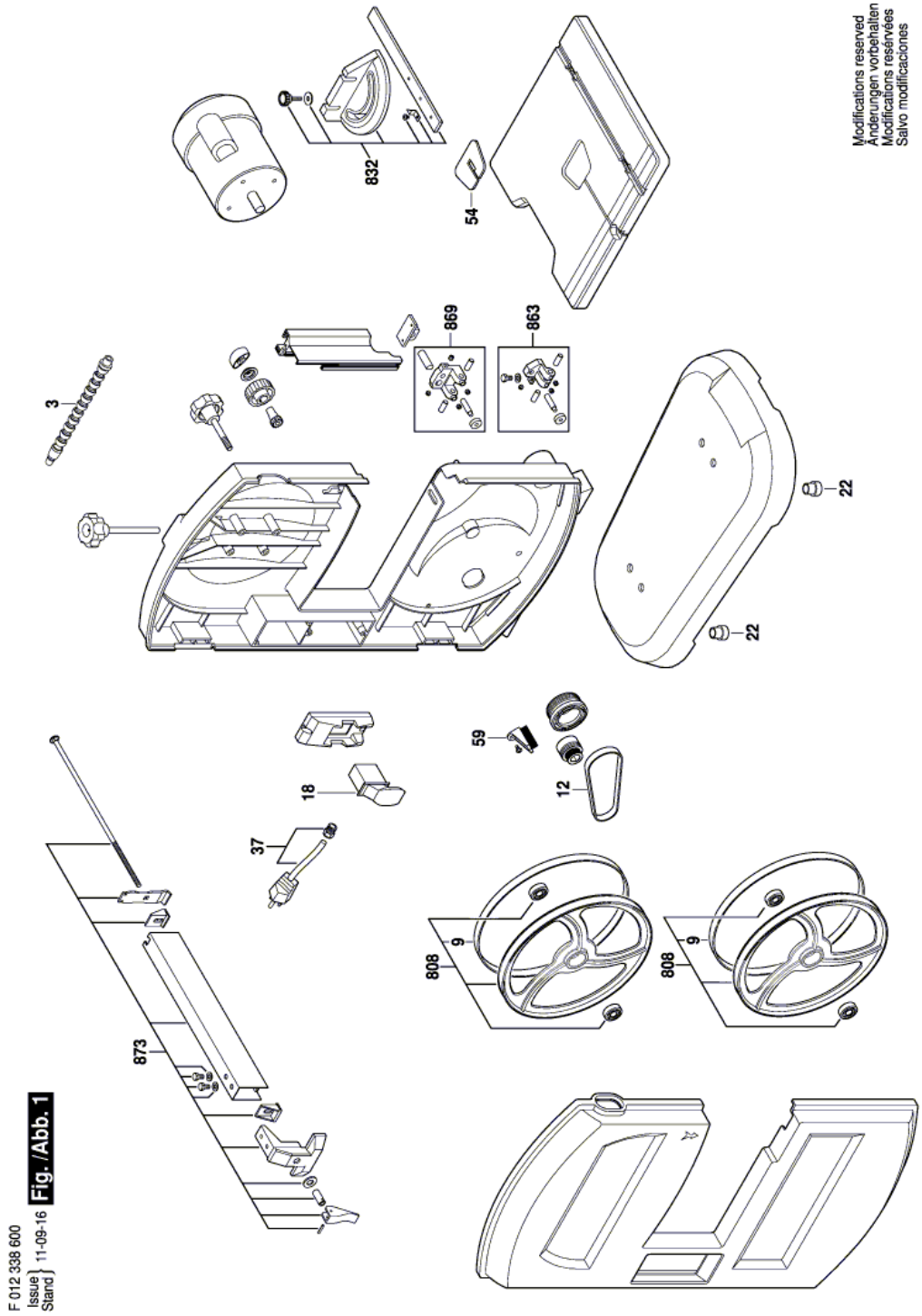


Band Saw - F 012 338 600 - 3386

| Item | Part Number | Description | Illustration | Price | Quantity | Price Group |
|------|---------------|-------------------|--------------|-------|----------|-------------|
| 3 | 1 619 PA2 629 | LED lamp | 1 | -,- | 1 | - |
| 9 | 1 619 PA2 626 | Wheel | 1 | -,- | 2 | - |
| 12 | 2 610 958 810 | Belt | 1 | -,- | 1 | 20 |
| 18 | 2 610 958 835 | Switch | 1 | -,- | 1 | - |
| 22 | 1 619 PA2 606 | Stand Foot | 1 | -,- | 4 | - |
| 37 | 1 619 PA2 607 | Power supply cord | 1 | -,- | 1 | - |
| 54 | 1 619 PA2 608 | Insert | 1 | -,- | 1 | - |
| 59 | 2 610 958 811 | Brush | 1 | -,- | 1 | - |
| 808 | 1 619 PA2 610 | Wheel Set | 1 | -,- | 1 | - |
| 832 | 1 619 PA2 611 | Mitre Gauge | 1 | -,- | 1 | - |
| 863 | 1 619 PA2 612 | Blade Guide | 1 | -,- | 1 | - |
| 869 | 1 619 PA2 613 | Blade Guide | 1 | -,- | 1 | - |
| 873 | 1 619 PA2 614 | Guide | 1 | -,- | 1 | - |

Illustration - Type E



F 012 338 600
Issue } 11-09-16
Stand } **Fig./Abb. 1**

Modifications reserved
Änderungen vorbehalten
Modificacions reservées
Salvo modificaciones

Information subject to change without further notice.