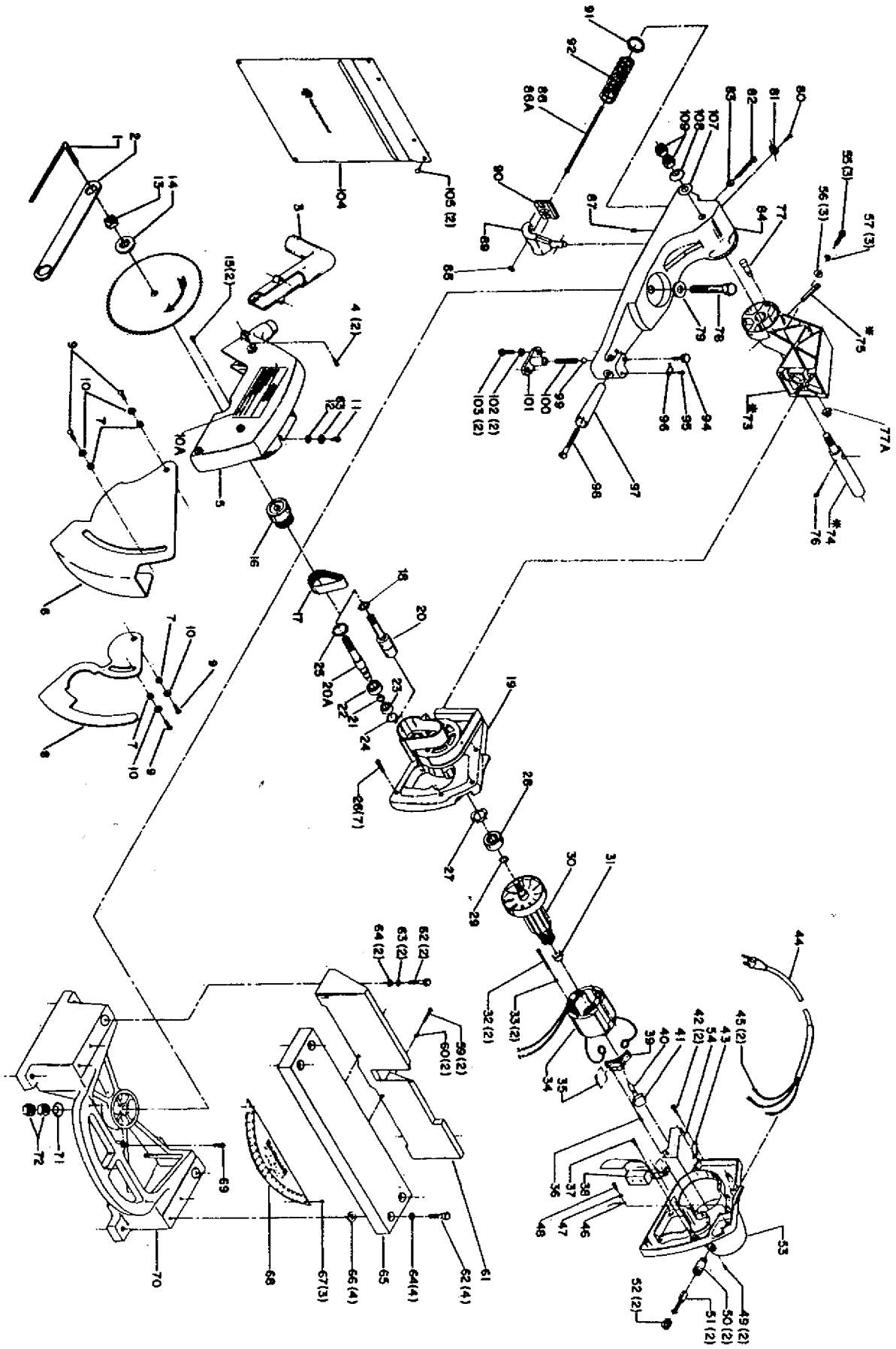


**34-010 TYPE II
MOTORIZED MITER BOX**

MB-1B
Part No. 422-17-651-0012
Revised: 8-31-93



• WHEN REPLACING THE PIVOT SHAFT (REF. NO. 74), HOLE FOR ROLL PIN (REF. NO. 76) MUST BE DRILLED WITH THE ARM (REF. NO. 75) AND PIVOT SHAFT (REF. NO. 74) ASSEMBLED.

Parts List for 34-010 Type 2

Item Number	Part Number	Description	Qty Required
1	000000-00	No Longer Available	1
2	000000-00	No Longer Available	1
3	000000-00	No Longer Available	1
4	000000-00	No Longer Available	2
5	422173540013	GUARD ASSY	1
6	000000-00	No Longer Available	1
7	422171040002	SPACER	1
8	000000-00	No Longer Available	1
9	901020100503	MACHINE SCREW	1
10	904010101614S	STEEL WASHER	1
10	000000-00	No Longer Available	1
11	901030408015S	CAP SCREW	1
12	904010101614S	STEEL WASHER	1
13	902012012567	HEX NUT	1
14	489170-00	FLANGE	1
15	901061217381	SCREW	2
16	000000-00	No Longer Available	1
17	49-083	DRIVE BELT	1
18	904010122479	WASHER	1
19	000000-00	No Longer Available	1
20	000000-00	No Longer Available	1
20	422173030001	ARBOR ASSY	1
21	904150107042	RING	1
22	920040131276	BEARING	1
23	920040205375	BEARING	1
24	000000-00	No Longer Available	1
25	000000-00	No Longer Available	1

Parts List for 34-010 Type 2

Item Number	Part Number	Description	Qty Required
26	000000-00	No Longer Available	7
27	000000-00	No Longer Available	1
28	920040205335	BEARING	1
29	904150120293	RING	1
30	438023350019	ARMATURE	1
31	920040916633	BEARING	1
32	901020520716	SCREW	2
33	491958-00	LOCK WASHER	2
34	438023360020	USE 694107	1
35	000000-00	No Longer Available	1
36	422170710002	PIN	1
37	901061217383	SCREW	1
38	000000-00	No Longer Available	1
39	000000-00	No Longer Available	1
40	422170670002	USE 842828	1
41	842827	BRAKE BUTTON	1
42	901061217383	SCREW	2
43	000000-00	No Longer Available	1
44	000000-00	No Longer Available	1
45	438010180043	TERMINAL	2
46	438010180041S	WIRE TERMINAL	1
47	491958-00	LOCK WASHER	1
48	901061217383	SCREW	1
49	000000-00	No Longer Available	2
50	438020410004	BRUSH HOLDER	2
51	438020070009	BRUSH	2
52	803483	BRUSH CAP	2

Parts List for 34-010 Type 2

Item Number	Part Number	Description	Qty Required
53	000000-00	No Longer Available	1
54	000000-00	No Longer Available	1
55	901010600602	CAP SCREW	3
56	904010101620S	WASHER	3
57	904020101703S	LOCK WASHER	3
59	000000-00	No Longer Available	2
60	904010101610S	STEEL WASHER	2
61	422170430003	FENCE	1
62	000000-00	No Longer Available	6
63	491957-00	LOCK WASHER	2
64	904010101614S	STEEL WASHER	6
65	000000-00	No Longer Available	1
66	904080213886	WASHER	4
67	901020100558	MACHINE SCREW	3
69	422171120004	LEVEL SCR	1
70	000000-00	No Longer Available	1
71	000000-00	No Longer Available	1
72	902010201226S	NUT	1
73	000000-00	No Longer Available	1
74	000000-00	No Longer Available	1
75	905010105091	PIN	1
76	905050402106S	COTTER PIN	1
77	422173710002	PIN ASSY	1
77	928018031456	SPRING	1
78	422171120006	SCREW	1
79	904010101622	STEEL WASHER	1
80	901061617382	Use 1087576	1

Parts List for 34-010 Type 2

Item Number	Part Number	Description	Qty Required
81	438010040015S	CABLE CLAMP 5/16	1
82	000000-00	No Longer Available	1
83	902010205435S	JAM NUT	1
84	000000-00	No Longer Available	1
85	000000-00	No Longer Available	1
86	000000-00	No Longer Available	1
87	000000-00	No Longer Available	1
89	000000-00	No Longer Available	1
90	000000-00	No Longer Available	1
91	000000-00	No Longer Available	1
92	1086731	SPRING	1
94	000000-00	No Longer Available	1
95	901020100558	MACHINE SCREW	1
96	000000-00	No Longer Available	1
97	000000-00	No Longer Available	1
98	1087658	SCREW	1
99	921010100033	BALL	1
100	1087235	SPRING	1
101	1086729	HOUSING	1
102	904010101620S	WASHER	2
103	901010600608	CAP SCREW	2
104	400066030003S	ENVELOPE	1
105	400060790001	RETAINER	2
107	904010101622	STEEL WASHER	1
108	000000-00	No Longer Available	1
109	902010201226S	NUT	1