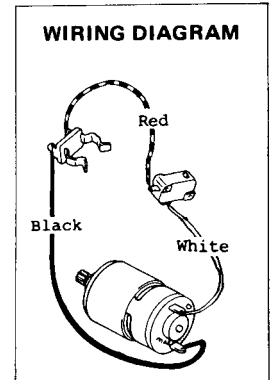
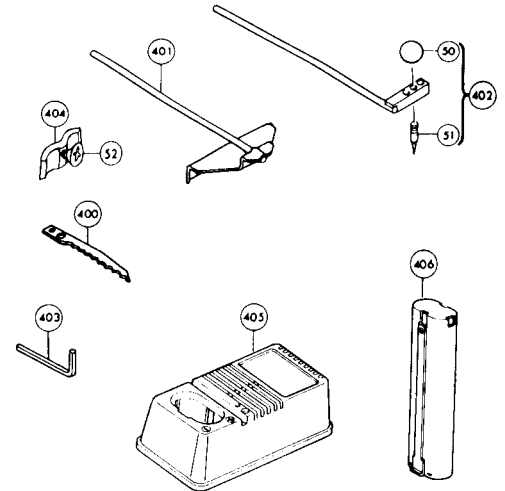
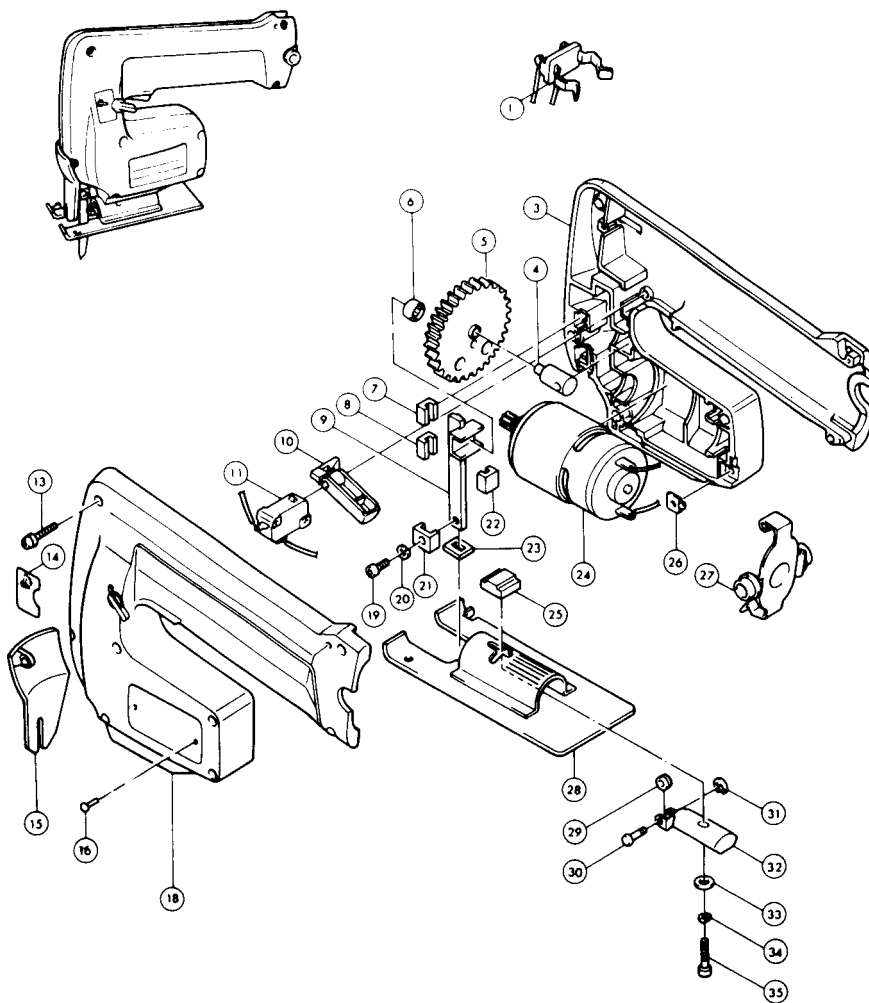




# CORDLESS JIG SAW

**MODEL 4300D  
MODEL 4300DW**



**IMPORTANT!**  
To assure product **SAFETY** and **RELIABILITY**, repairs, maintenance or adjustments should be performed by **MAKITA** Service Centers or other qualified service organizations. Always use **MAKITA** replacement parts.

Fig.	Part No.	Qty. Used	Description
1	643909-9	1	Battery Holder
3	*	1	Housing (R) With Hex. Nut 991102-0
4	152272-4	1	Supporter Complete
5	*	1	Gear Complete
6	212014-9	1	Needle Bearing 407
7	214020-0	1	Plane Bearing 3
8	214020-0	1	Plane Bearing 3
9	164774-8	1	Slider
10	410470-9	1	Trigger
11	651862-5	1	Switch
13	911143-2	8	Pan Head Screw M4x22
14	816662-2	1	Indication Label
15	410382-6	1	Protector
16	953106-2	2	Rivet 0-5
18	*	1	Housing (L) w/Lever 272218-5
19	922107-1	1	Hex. Socket Head Bolt M4x8
20	942051-6	1	Spring Washer 4
21	331211-9	1	Blade Set
22	214020-0	1	Plane Bearing 3
23	443063-7	1	Felt
24	*	1	Motor
25	164749-7	1	Holder
26	232086-8	1	Leaf Spring

Fig.	Part No.	Qty. Used	Description
27	163157-9	1	Set Plate
28	164766-7	1	Base
29	321742-6	1	Roller
30	256644-6	1	Pin 3
31	257903-1	1	Stop Ring E-2.3
32	134313-8	1	Back Roller A'ssy (Incl. Fig. 29-32)
33	941051-3	1	Flat Washer 4
34	942051-6	1	Spring Washer 4
35	922132-2	1	Hex. Socket Head Bolt M4x18
50	271601-3	1	Knob 20
51	323223-6	1	Circular Guide Pin
52	251951-2	1	Hex. Socket Head Bolt M5x10

### ACCESSORIES

400	792222-3		Jig Saw Blade #39
	792221-5		Jig Saw Blade #31
401	164113-2		Rip Fence
402	123030-5		Circular Guide Assembly (Incl. Fig. 50, 51)
403	783201-2		Hex Wrench 3
404	191602-4		Rule Holder A'ssy (With Fig. 52)
405	113103-2		Charger
406	632007-4		Battery 9000 (9.6V)

SERVICE CHANGE

1. Change on Motor and Housing.

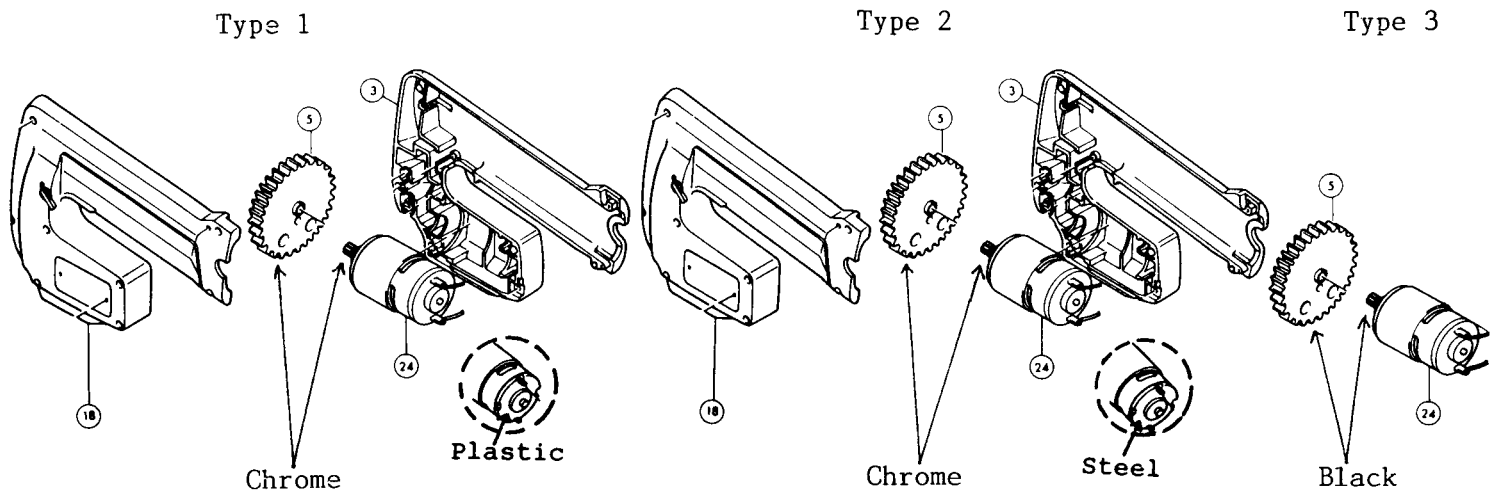
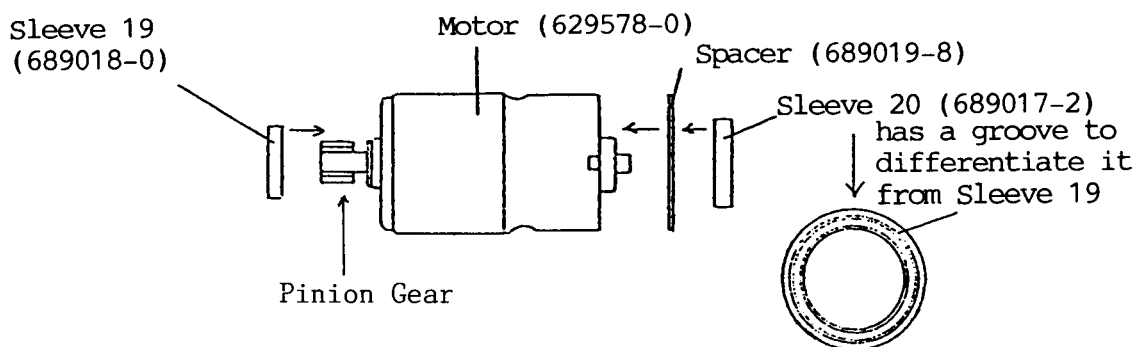


Fig.	Description	Type 1	Type 2	Type 3
3	Housing (R)	Part #410459-7 (Discontinued)	Part #182087-5 Housing Set	
18	Housing (L)	Part #410460-2 (Discontinued)		
5	Gear	Part #153157-7 (Discontinued)		Part #153202-8
24	Motor	Part #629544-7 (Discontinued)	Part #629578-0 w/Pinion Gear 221920-7 (Discontinued)	Part #629581-1 w/Pinion Gear 221882-9

The above parts are completely interchangeable as a set.

SERVICE NOTE

1. Type 2 Motor fits Type 1 Housing when below parts are added.



2. Type 2 Motor can be used with Type 3 Gear by replacing Pinion Gear on Motor (Part #221920-7) to Type 3 Motor's Pinion Gear (Part #221882-9).