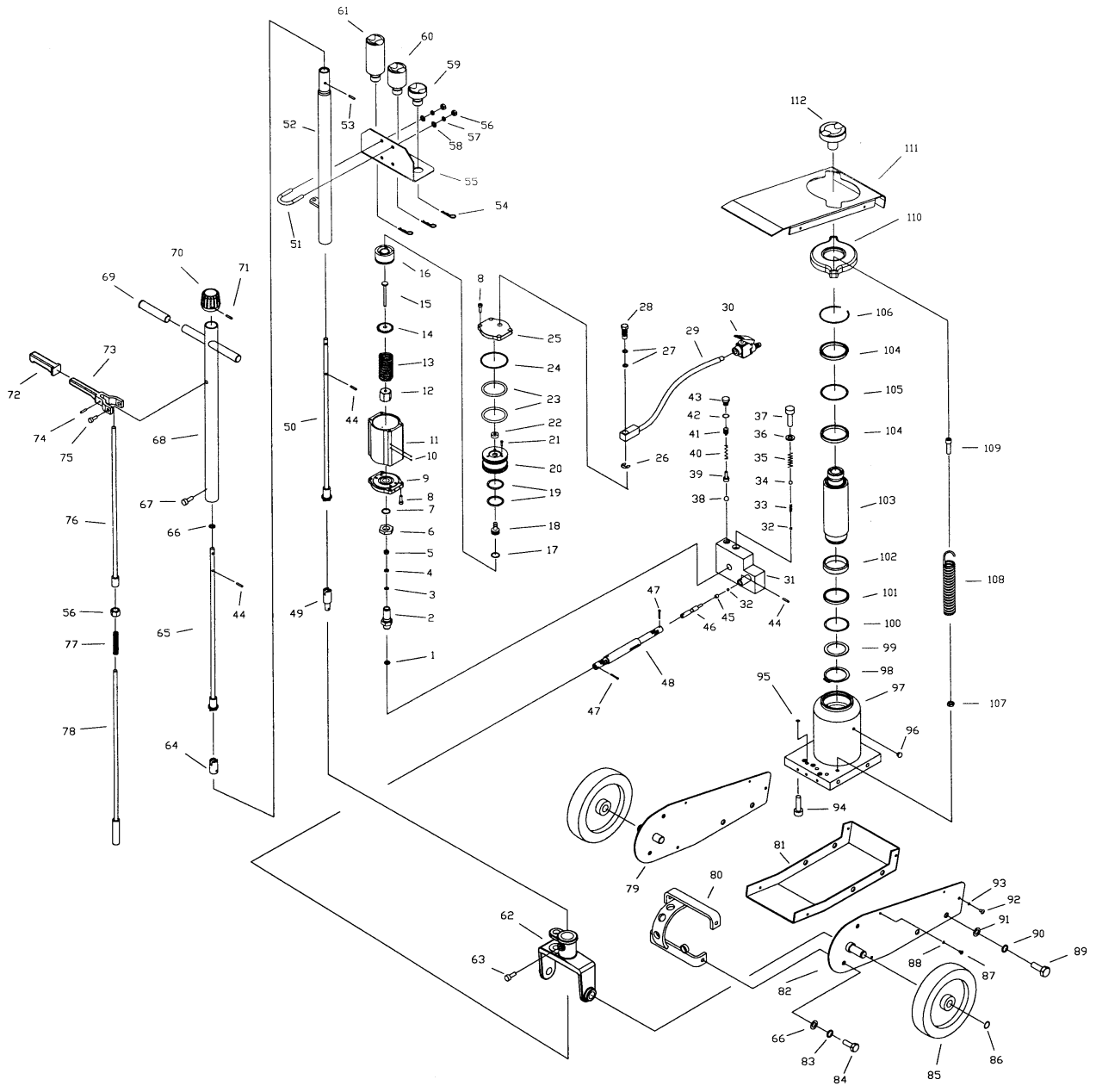


# JASJ-22C Service Jack



## Parts List: JASJ-22C Service Jack

Index No.	Part No.	Description	Size	Qty
1	JASJ22C-1	Copper Washer		1
2	AHJ12-1	Pump Cylinder		1
3	AHJ12-2	Y-Seal*	5.8x12x5.2mm	1
4	AHJ12-3	Nylon Gasket*	5.8x12x1.25mm	1
5	AHJ12-4	Copper Washer		1
6	AHJ12-5	Nut		1
7	AHJ12-6	O-Ring	18x2.65mm	1
8	TS-1503051	Socket Head Cap Screw	M6x20	8
9	AHJ12-8	Base Cover		1
10	SB-3MM	Steel Ball	Ø 3mm	4
11	AHJ12-10	Air Motor Housing		1
12	AHJ12-11	Nut		1
13	AHJ12-12	Spring		1
14	AHJ12-13	Washer		1
15	AHJ12-14	Air Pump Plunger		1
16	AHJ12-15	Air Piston Base		1
17	AHJ12-16	O-Ring	20.3x2.65mm	1
18	AHJ12-17	Air Shuttle Valve		1
19	AHJ12-18	O-Ring	43x3.55mm	2
20	AHJ12-19	Air Piston		1
21	TS-1502021	Socket Head Cap Screw	M5x10	3
22	AHJ12-21	Shuttle Valve Seal		1
23	AHJ12-22	O-Ring	57x5.3mm	2
24	AHJ12-23	O-Ring	67x2.4mm	1
25	AHJ12-24	Top Cover		1
26	AHJ12-25	Snap Ring	Ø 14mm	1
27	AHJ12-26	O-Ring	11.5x1.5mm	2
28	AHJ12-27	Coupler		1
29	JASJ22C-29	Air Hose Assembly		1
30	AHJ12-29	Air Valve Assembly		1
31	JASJ22C-31	Valve Block Assembly		1
32	SB-6MM	Steel Ball	Ø 6mm	2
33	JASJ22C-33	Spring		1
34	SB-9MM	Steel Ball	Ø 9mm	1
35	JASJ22C-35	Spring		1
36	JSJ3T-64	Copper Washer		1
37	TS-1506011	Socket Head Cap Screw	M12x20	1
38	SB-4MM	Steel Ball	Ø 4mm	1
39	JSJ3T-56	Safety Valve Ball Seat		1
40	JSJ3T-57	Safety Valve Spring		1
41	JSJ3T-58	Safety Valve Adjusting Screw		1
42	JSJ3T-59	Seal*		1
43	JSJ3T-60	Safety Valve Screw		1
44	JSJ3T-46	Lock Pin	Ø 4x20mm	3
45	JSJ3T-53	Seal*		1
46	JSJ3T-52	Release Pin		1
47	JSJ3T-21	Pin	Ø 3x18mm	1
48	JASJ22C-48	Universal Joint Assembly		1
49	JASJ22C-49	Rod Joint		1
50	JASJ22C-50	Lower Release Rod		1
51	JASJ22C-51	U-Bolt		2
52	JASJ22C-52	Front Handle		1
53	JASJ22C-53	Lock Pin	Ø 4x16mm	1
54	JASJ22C-54	Split Pin		3
55	JASJ22C-55	Angular Bracket		1
56	TS-1540061	Hex Nut	M8	5
57	TS-2311081	Lock Washer	M8	4

58	TS-1550061	Flat Washer	M8	4
59	JASJ22C-59	Adapter	Ø 48x20mm	1
60	JASJ22C-60	Adapter	Ø 48x50mm	1
61	JASJ22C-61	Adapter	Ø 48x100mm	1
62	JASJ22C-62	Handle Socket		1
63	JASJ22C-63	Handle Socket Bolt		1
64	JASJ22C-64	Rod Joint		1
65	JASJ22C-65	Upper Release Rod		1
66	JASJ22C-66	Flat Washer	Ø 10mm	5
67	JASJ22C-67	Phillips Pan Head Machine Screw	M5x8	1
68	JASJ22C-68	Rear Handle		1
69	JSJ3T-32	Handle Sleeve		2
70	JSJ3T-39	Knob		1
71	JSJ3T-40	Lock Pin	Ø 4x40mm	1
72	JASJ22C-72	Sleeve		1
73	JASJ22C-73	Lock Lever		1
74	JSJ3T-44	Lock Pin	Ø 3x18mm	1
75	TS-1502021	Socket Head Cap Screw	M5x10	2
76	JASJ22C-76	Upper Control Rod		1
77	JASJ22C-77	Spring		1
78	JASJ22C-78	Lower Control Rod		1
79	JASJ22C-79	Frame (LH)		1
80	JASJ22C-80	Bracket		1
81	JASJ22C-81	Base Plate		1
82	JASJ22C-82	Frame (RH)		1
83	JSJ3M-05	Lock Washer	M10	4
84	JASJ22C-84	Hex Cap Screw	M10x16	4
85	JASJ22C-85	Wheel		2
86	JASJ22C-86	Snap Ring	Ø 15mm	2
87	TS-1533042	Phillips Pan Head Machine Screw	M5x12	4
88	TS-1550031	Flat Washer	M5	4
89	JASJ22C-89	Hex Cap Screw	M12x25	4
90	JASJ22C-90	Lock Washer	M12	4
91	JASJ22C-91	Flat Washer	M12	4
92	TS-1534042	Phillips Pan Head Machine Screw	M6x12	4
93	TS-1550041	Flat Washer	M6	4
94	TS-1504051	Socket Head Cap Screw	M8x25	3
95	JASJ22C-95	O-Ring	7.1x2.65mm	3
96	JSJ3T-66	Oil Filler Plug		1
97	JASJ22C-97	Oil Tank Assembly		1
98	JSJ10T-68	Snap Ring	Ø 48mm	1
99	JSJ10T-69	O-Ring Retainer		1
100	JSJ10T-70	O-Ring*	53x5.3mm	1
101	JSJ10T-71	Seal Washer*		1
102	JSJ10T-72	Piston Ring		1
103	JASJ22C-103	Ram Assembly		1
104	JSJ10T-74	Bushing		2
105	JSJ10T-75	O-Ring*	61.5x5.3mm	1
106	JSJ10T-76	Snap Ring		1
107	JASJ22C-107	Hex Nut (thin)	M10	2
108	JASJ22C-108	Spring		2
109	JASJ22C-109	Bolt		2
110	JASJ22C-110	Spring Hanger		1
111	JASJ22C-111	Cover		1
112	JASJ22C-112	Adapter	Ø 68x20mm	1
	JASJ22C-RK	Repair Kit		

NOTE: Items included in the Repair Kit are indicated by an asterisk (\*).