

PF350-S FEATURES & BENEFITS

Tool Less Depth of Drive

Provides precise control of nail depth without adjusting the compressor. (on other side)

Powerful Motor

Consistently drives into all engineered lumber.

Compact Design

Able to get into tight spots

Agressive Work Contact

Grabs the wood when toe nailing.

Metal Exhaust Cap

For maximum durability.

Light Weight Design

Easy to maneuver with less arm fatigue.

Lock Out

Eliminates blank firing.

Bypass Follower

For fast 2-step loading.

Switchable Trigger

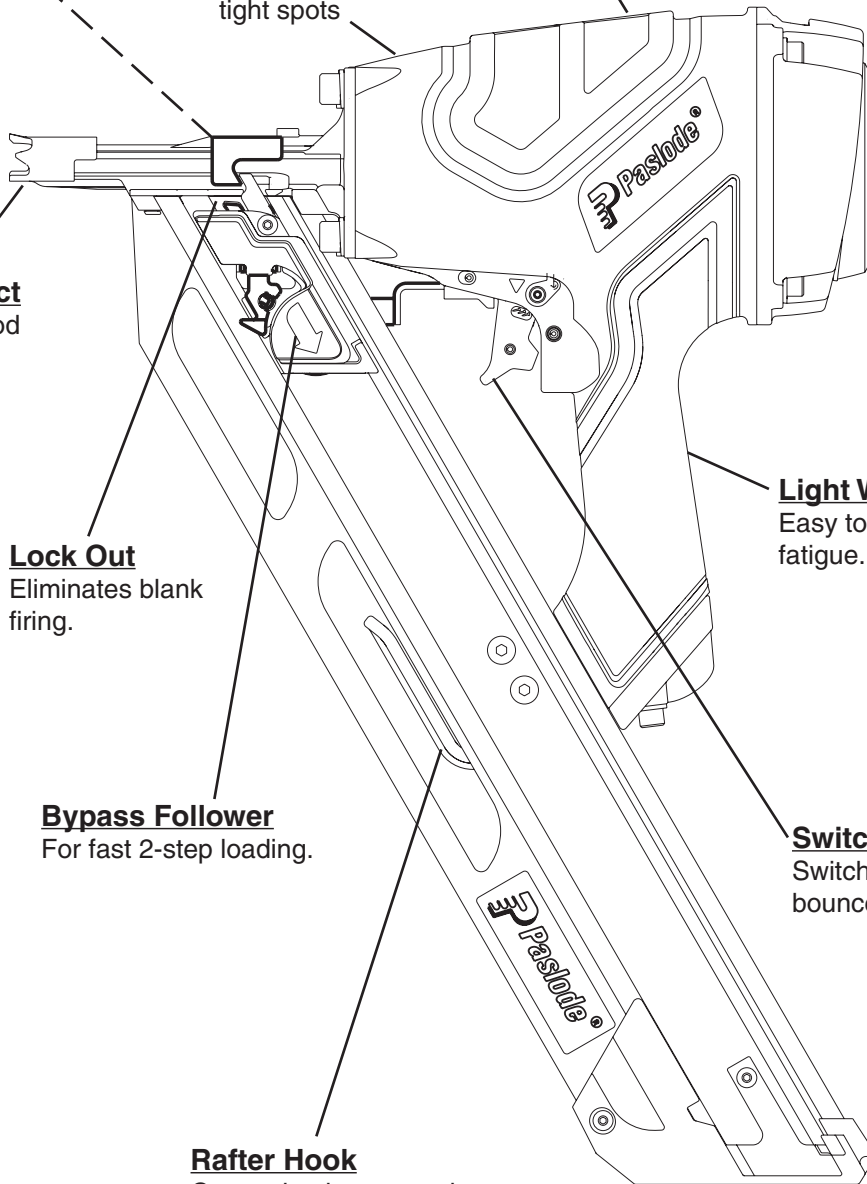
Switches from sequential to bounce fire.

Rafter Hook

Conveniently stows the tool.

Rear Load Magazine

Holds 2 strips or 84 nails.

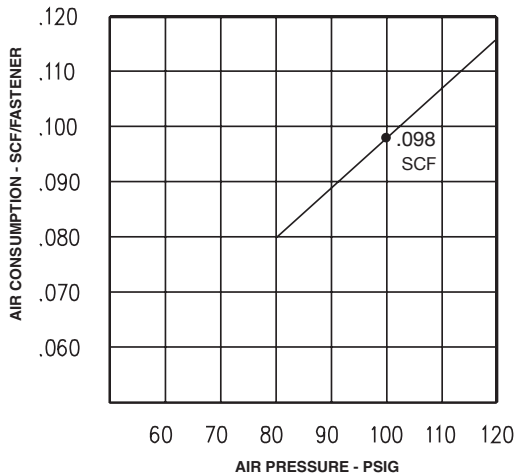


PARTS LEGEND

PF350-S, 502000

1	502004	1	Air Deflector	41	502047	1	Lower W.C.E.
* 2	502062	1	Air Deflector Gasket	42	502046	1	Upper W.C.E.
3	501299	4	S.H.C.S. 1/4-20 x 1"	43	502049	1	Detent Ball
4	502003	1	Top Cap	44	502061	1	Detent Spring
* 5	502013	1	Top Cap Gasket	45	404361	1	Roll Pin 1/8" x 1/2"
6	123984	1	Valve Spring	46	502050	1	Detent Body
* 7	502859	1	O-Ring	47	502055	1	W.C.E. Spring
* 8	211664	1	O-Ring	▲ 48	009016	4	S.H.C.S. 5/16-18 x 1" with Patch
9	502434	1	Poppet Assembly	49	095417	4	Lock Washer 5/16
* 10	198028	1	O-Ring	50	502006	1	Nose
11	502032	1	REMOVED	51	502014	2	Magazine Isolator
12	502056	1	Exhaust Seal	* 52	502042	1	O-Ring
● → 13	501300	1	S.H.C.S. 1/4-20 x 1-1/4"	* 53	091866	1	Roll Pin 1/8" x 3/4"
* 14	502011	1	Piston Seal	54	502053	1	Dual Mode Trigger
15	502012	1	Piston	55	502040	1	Trip Lever
16	502009	1	Sleeve	56	502060	1	Trigger Spring
17	502010	1	Check Band	* 57	092747	1	O-Ring
■ * 18	501218	1	Driver Blade	58	502035	1	Housing Label Right
* 19	092235	1	O-Ring	59	502043	1	Lower Valve Spool
20	502007	1	Bulkhead	60	502041	1	Trigger Pivot Pin
* 21	401985	1	O-Ring	* 61	1015358	1	O-Ring
* 22	500866	1	Bumper	* 62	196345	1	O-Ring
23	500729	1	Driver Blade Seal	** 63	502192	1	Warning Label
24	502022	1	REMOVED	64	502033	1	W.C.E. Guide Block
25	502807	1	Magazine Assembly	65	502446	1	Valve Pin with O-Rings
26	502019	1	Follower Claw	66	502059	1	Valve Pin Spring
27	502021	1	Lockout Bar	67	502044	1	Upper Valve Spool
28	502018	1	Follower Body	* 68	197913	1	O-Ring
29	502031	2	B.H.C.S. #8-32 x 1/2"	69	502002	1	Housing with Grip
30	502020	1	Follower Spring	70	502914	1	Rafter Hook
* 31	502026	1	Negator Spring	71	502930	1	Rafter Hook Spring
32	502025	1	Drum Pin Assembly	72	502916	1	Rafter Hook Washer
33	403796	3	Roll Pin 1/8" x 1-1/4"	▲ 73	444786	1	S.H.C.S. 1/4-20 x 5/8"
34	502017	2	B.H.C.S. 1/4-20 x 3/4"	74	442681	2	Locknut 1/4-20
35	502058	1	Magazine Logo Label	* 75	417147	1	O-Ring
36	502038	1	B.H.C.S. #8-32 x 1'	76	502005	1	Housing End Plug
37	502016	2	REMOVED	77	501300	2	S.H.C.S. 1/4-20 x 1-1/4"
38	502029	1	Magazine End Cap	78	502193	1	Actuation Setting Label
39	502034	1	Housing Label Left	→ 79	502036	1	Thumb Wheel
40	404325	2	Locknut #8-32	80	502723	1	Roll Pin 3/8"x1-1/4"

- * Denotes Normal Wear Items.
- ** Make sure Warning Label (502192) is properly affixed. Replace if necessary. Label available at no charge through the Service Parts Dept.
- ▲ Apply Loctite® 242 (Blue) Part No. 093500
- Apply Loctite® 620 (Green) Part No. 401491
- Apply Loctite® 271 (Red) Part No. 093422
- Denotes New Change



SAFETY INSTRUCTIONS

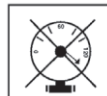
WEAR EYE AND HEARING PROTECTION



Always wear hearing protection and eye protection devices, including side shields when operating or working in the vicinity of a tool.



DO NOT EXCEED MAXIMUM RECOMMENDED AIR PRESSURE

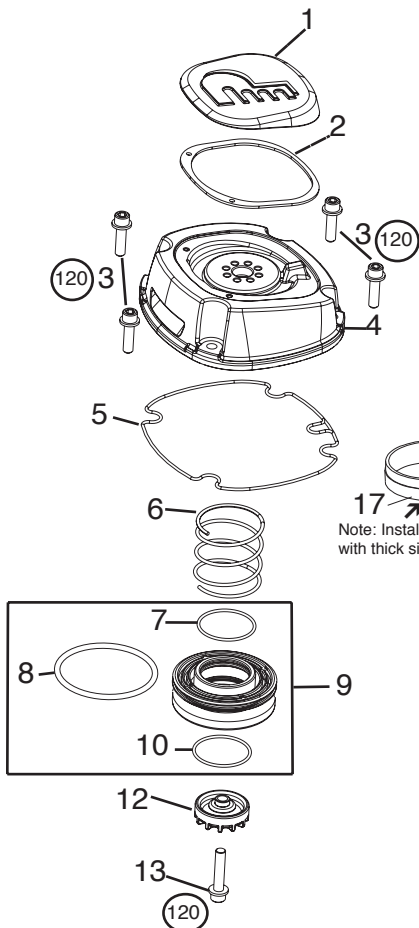
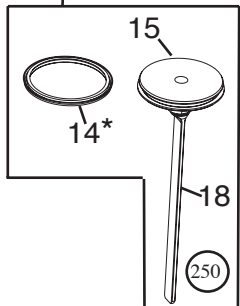


Operate the tool using only the recommended air pressure. Do not exceed the maximum air pressure marked on the tool. Be sure the air pressure gauge is operating properly and check it at least twice a day.

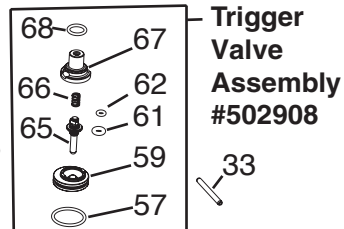


Never use any bottled air or gases such as oxygen to operate the tool since they could cause the tool to explode.

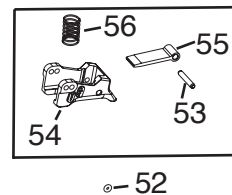
**Piston Assembly
#502008**



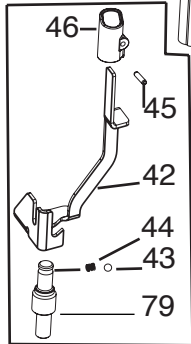
Note: Install check band with thick side down.



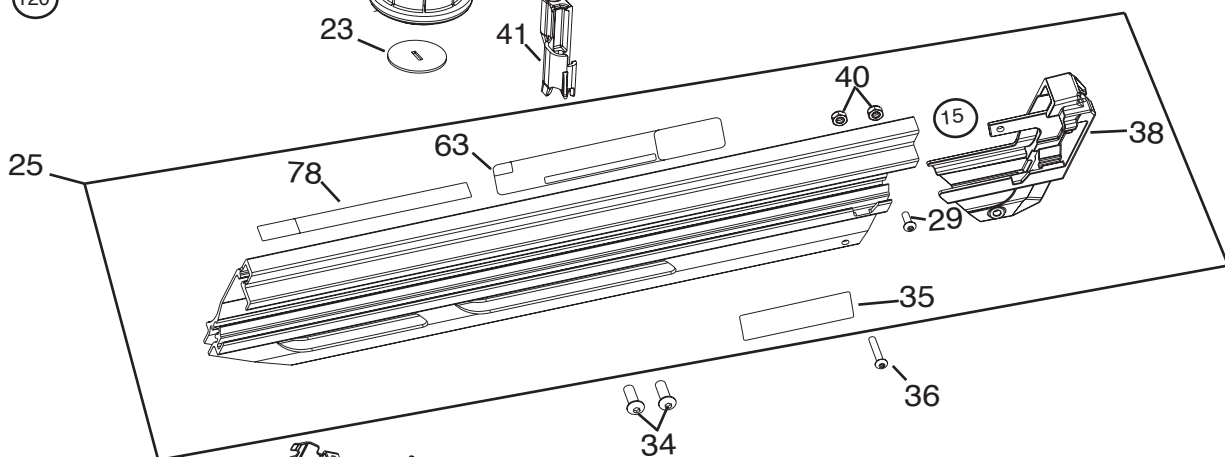
**Trigger Valve Assembly
#502908**



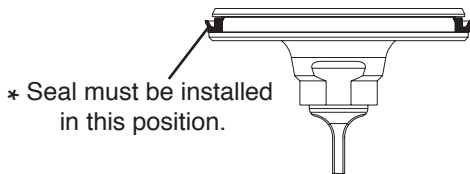
**Trigger Assembly
#502435**



**Upper Work Contact Assembly
#502734**



Torque Values
IN/LBS



* Seal must be installed in this position.