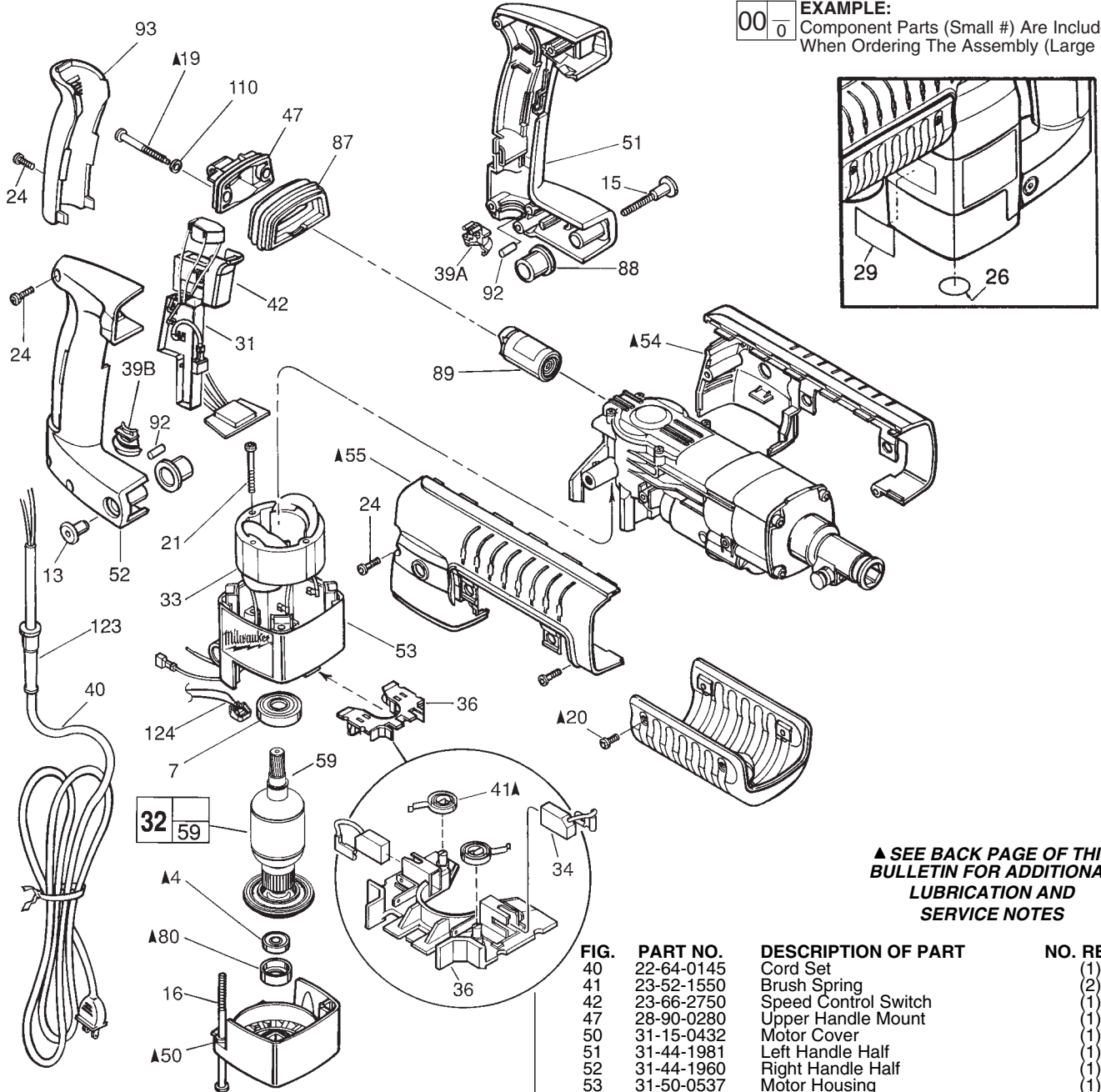




SERVICE PARTS LIST

SPECIFY CATALOG NO. AND SERIAL NO. WHEN ORDERING PARTS		REVISED BULLETIN	DATE
CHIPPER HAMMER CATALOG NO. 5336-22 STARTING SERIAL NO. 216A			Dec. 2006
		WIRING INSTRUCTION 58-01-1205	

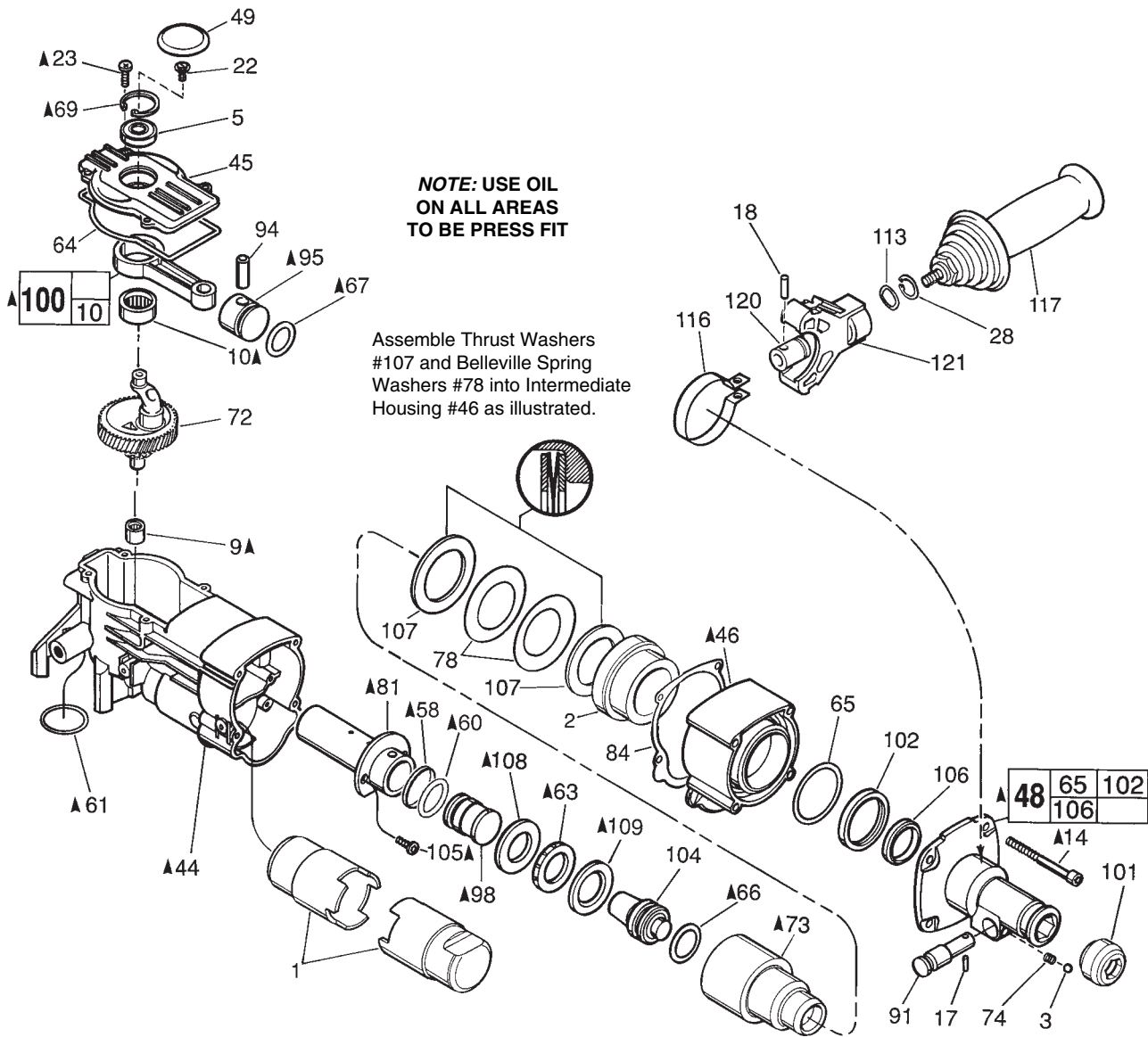
EXAMPLE:
 Component Parts (Small #) Are Included
 When Ordering The Assembly (Large #).



▲ SEE BACK PAGE OF THIS BULLETIN FOR ADDITIONAL LUBRICATION AND SERVICE NOTES

FIG.	PART NO.	DESCRIPTION OF PART	NO. REQ.
	4	02-04-0847 Ball Bearing	(1)
	7	02-04-1518 Ball Bearing	(1)
	13	05-59-0100 Pivot Nut	(1)
	15	05-77-0100 Pivot Bolt	(1)
	16	05-81-0920 M6 x 1.0 x 120 Pan Hd. Slit. Tapt. T-27	(4)
	19	06-81-1805 Special Screw	(2)
	20	06-82-7252 8-32 x 3/8" Pan Hd. Slit. Tapt. T-20	(4)
	21	06-82-7425 8-16 x 2" Pan Hd. Slit. Plast. T-20	(2)
	24	06-95-6290 M5 x 2.24 x 18 Pan Hd. Slit. PT T-20	(7)
	25	06-65-3720 Dowel Pin-Knurled	(1)
	26	10-75-2760 Milwaukee Label	(1)
	29	12-20-3315 Service Nameplate Kit	(1)
	31	14-20-1000 Electronics Assembly	(1)
	32	16-50-0045 120 Volt Armature	(1)
	33	18-50-0045 120 Volt Field	(1)
	34	22-18-0870 120 V Carbon Brush (2) Kit	(1)
	36	22-22-1480 Brush Carrier Assembly	(1)
	39A	31-17-0260 Lower Cord Clamp	(1)
	39B	31-17-0265 Upper Cord Clamp	(1)

FIG.	PART NO.	DESCRIPTION OF PART	NO. REQ.
40	22-64-0145	Cord Set	(1)
41	23-52-1550	Brush Spring	(2)
42	23-66-2750	Speed Control Switch	(1)
47	28-90-0280	Upper Handle Mount	(1)
50	31-15-0432	Motor Cover	(1)
51	31-44-1981	Left Handle Half	(1)
52	31-44-1960	Right Handle Half	(1)
53	31-50-0537	Motor Housing	(1)
54	31-55-0240	Left Shroud	(1)
55	31-55-0250	Right Shroud	(1)
56	31-55-0225	Belly Shroud	(1)
59	34-60-3620	Retaining Ring	(1)
80	42-96-0130	Bearing Cup	(1)
87	43-87-0030	Isolation Bellows	(1)
88	43-87-0040	Pivot Isolator	(2)
89	43-87-0060	Isolation Module Assembly	(1)
90	43-98-0470	Rotostop Knob	(1)
92	14-46-1001	Foam Slug Kit (Bag of 10)	(1)
93	44-52-0580	Handle Cushion	(1)
110	45-88-8555	Rubber Washer	(2)
123	44-76-0210	Cord Protector	(1)
124	-----	Inductor Boat (Incl. with Fig. 31)	(1)



FASTENER TORQUE SPECIFICATIONS (IN./LBS.)

FIG. NO.	SEATING TORQUE		
	MINIMUM	MAXIMUM	
14	120	140	
15	20	25	
16	30	35	
19	30	35	
20	25	30	
21	20	25	
22	25	30	
23	CRANKCASE COVER	25	30
24	HANDLE HALVES AND SHROUDS	20	25
	CUSHION GRIP	6	10
25		35	45
105		60	70

22-18-0870 CARBON BRUSH SERVICE KIT
 THIS KIT CONTAINS:
 2 ----- Carbon Brush

- 14-46-9045 HAMMER SERVICE KIT**
 THIS KIT CONTAINS:
- 1 31-12-0270 Cap-Cover
 - 1 34-40-4310 Rubber Damping Washer
 - 1 34-40-4320 Seal-Cover
 - 1 34-40-4330 O-Ring
 - 1 34-40-4350 O-Ring
 - 1 34-40-0045 Cap Seal
 - 1 34-40-0046 O-Ring
 - 1 34-40-4470 O-Ring
 - 1 42-96-0130 Bearing Cup
 - 1 43-44-0970 Gasket
 - 1 45-06-0540 Dust Seal-Hex
 - 1 49-08-5265 7 Oz. Tube "S2" Grease

▲ SEE BACK PAGE OF THIS BULLETIN FOR ADDITIONAL LUBRICATION AND SERVICE NOTES

FIG.	PART NO.	DESCRIPTION OF PART	NO. REQ.
1	31-01-0030	Grease Displacer	(2)
2	45-60-0615	Spindle Support	(1)
3	02-02-0250	1/4" Steel Ball	(1)
5	02-04-0911	Ball Bearing	(1)
9	02-50-2470	Needle Bearing	(1)
10	02-50-4020	Needle Bearing	(1)
14	05-74-0670	M6 x 1.0 x 70 Skt. Hd. Cap Screw T-27	(4)
17	06-65-0829	Cross Pin	(1)
18	06-65-1660	Dowel Pin	(1)
22	06-82-8842	8-32 x 3/8" Pan Hd. Slit. Taptite T-20	(1)
23	06-95-6280	M4 x 0.7 x 14 Pan Hd. Slit. Taptite T-20	(4)
28	34-60-2580	External Retaining Ring	(1)
44	28-14-2287	Crankcase	(1)
45	28-20-1325	Crankcase Cover	(1)
46	28-50-6445	Intermediate Housing	(1)
48	14-52-0020	Nose Assembly	(1)
49	31-12-0270	Cap-Cover	(1)
58	34-40-0045	Cap Seal	(1)
60	34-40-0046	O-Ring	(1)
61	34-40-1375	O-Ring	(1)
63	34-40-4310	Rubber Damping Washer	(1)
64	34-40-4320	Seal-Cover	(1)
65	34-40-4330	O-Ring	(1)
66	34-40-4350	O-Ring	(1)
67	34-40-4470	O-Ring	(1)
69	34-80-5090	Retaining Ring-Beveled	(1)
72	14-09-0140	Crankshaft Assembly	(1)
73	38-50-6060	Spindle	(1)
74	40-50-8420	Bit Lock Spring	(1)
78	40-50-8590	Belleville Spring	(2)
81	42-98-0300	Barrel	(1)
84	43-44-0970	Gasket	(1)
91	44-20-0222	Bit Lock	(1)
94	44-60-1710	Wrist Pin	(1)
95	44-62-0220	Piston	(1)
98	44-82-0225	Ram	(1)
100	44-94-0395	Connecting Rod Assembly	(1)
101	49-62-0095	Dust Seal-Hex (5/pkg.)	(1)
102	45-06-0560	Oil Seal	(1)
104	45-56-2610	Striker	(1)
105	06-82-8872	DG50 x 16mm Torx Pan Head Screw	(2)
106	45-88-5176	Felt Seal	(1)
107	45-88-8520	Thrust Washer	(2)
108	45-88-8530	Barrel Thrust Washer	(1)
109	45-88-8535	Striker Cushion Washer	(1)
113	45-88-8730	Wave Washer	(1)
115	06-14-0065	Hex Head Bolt-Special	(1)
116	42-16-0150	Side Handle Band	(1)
117	14-34-0516	Side Handle Assembly	(1)
120	44-86-0620	Band Retainer	(1)
121	31-44-2020	Side Handle Housing	(1)

61-10-0670 Nose Service Tool

▲ SEE BACK PAGE OF THIS BULLETIN FOR ADDITIONAL LUBRICATION AND SERVICE NOTES

LUBRICATION NOTES: (TYPE "S2" GREASE, NO. 49-08-5265)

Fill Piston #95 with grease and assemble to Connecting Rod #100 with Wrist Pin #94. Front surface of Piston to be free of grease.

Lubricate O-Ring #67 with grease.

Place 1.5 oz. grease here.

Place a total of 1.0 oz. grease in the barrel cavity in the crankcase #44. Place .5 oz. in each corner in barrel chamber.

Place 1.5 oz. grease in bottom of crankcase prior to installing crankshaft assembly.

FRONT OF CRANKCASE

Seal to be installed with garter spring to left as shown.

Dip Felt Washer #106 into light oil. Press Oil Seal #102 and Felt Washer into Nose #48 to dimension shown using Nose Service Tool 61-10-0670.

Lightly grease Spring #74 and bit lock #91.

Lubricate O-Ring with grease. Install O-Ring onto Ram. Assemble Cap Seal onto Ram. Resize Cap Seal and load into Barrel (seal end first). Ram should be located flush with end of Barrel.

Place 1.0 oz. grease in lower cavity.

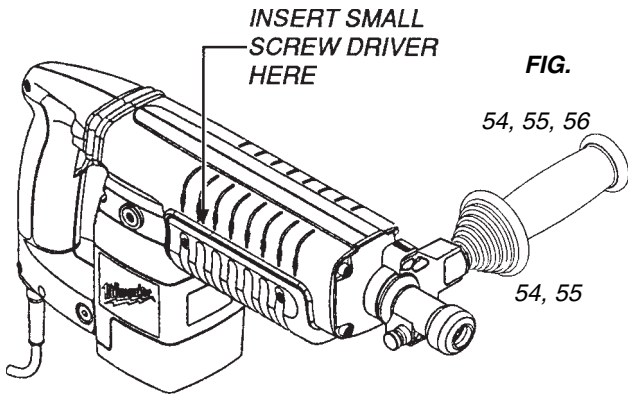


FIG.

▲ NOTES

TO REMOVE BELLY SHROUD #56 FROM TOOL, INSERT SMALL SCREW DRIVER INTO GROOVE BETWEEN BELLY AND SIDE SHROUDS #54 AND #55, ABOUT 1/3 OF THE WAY FROM THE MOTOR END, AS SHOWN. PRY OUT AND DOWN ON BOTH SIDES OF THE TOOL.

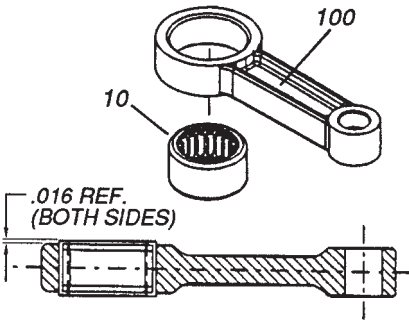
TO INSTALL THE SIDE SHROUDS #54 AND #55, THE TOP HINGE OF THE SHROUDS MUST BE COMPLETELY INTERLOCKED, THEN THE BACK SIDE ROTATED CLOSED AROUND THE TOOL.

73

LUBRICATE ALL BORES IN SPINDLE #73 WITH A MEDIUM COATING OF GREASE.

63, 108, 109

LUBRICATE RUBBER DAMPING WASHER #63, BARREL THRUST WASHER #108 AND STRIKER CUSHION WASHER #109 WITH A MEDIUM COATING OF GREASE BEFORE ASSEMBLY.



10, 100

PRESS NEEDLE BEARING #10 IN ROD #100 SO THAT THE SAME AMOUNT STICKS OUT ON BOTH SIDES OF THE ROD, AS SHOWN.

9, 44

PRESS NEEDLE BEARING #9 INTO CRANKCASE #44, FLUSH WITH TOP OF BORE, AS SHOWN.

81

LIGHTLY GREASE INSIDE OF BARREL #81 BEFORE ASSEMBLY.

48, 73

SMALL OUTSIDE DIAMETER OF SPINDLE #73 IS TO BE LUBRICATED WITH A LIGHT COAT OF GREASE BEFORE ASSEMBLING THE NOSE ASSEMBLY #48 TO THE TOOL.

48, 73, 102

NOSE ASSEMBLY #48 MUST BE PLACED SQUARELY OVER SPINDLE #73, WHEN ASSEMBLING, TO PREVENT DAMAGE TO OIL SEAL #102.

14, 19, 20, 23

FASTENERS #14, #19, #20 AND #23 ARE TO BE RE-ASSEMBLED USING BLUE LOCTITE.

48, 102

LUBRICATE BORE IN NOSE ASSEMBLY #48 BEFORE PRESSING OIL SEAL #102 INTO PLACE.

60, 61, 66, 67

LUBRICATE O-RINGS #60, #61, #66 AND #67 WITH GREASE.

69

INSTALL BEVEL SNAP RING #69 WITH BEVEL SIDE UP.

4, 50, 80

PLACE BEARING CUP #80 ON SMALL ARMATURE BEARING #4 BEFORE INSTALLING MOTOR COVER #50.

41

BRUSH SPRINGS #41 ARE TO BE WOUND 1/2 TURN TO ENGAGE BRUSHES.

4

RUBBER SEAL SIDE OF BALL BEARING #4 TO FACE FAN.

95, 98

FACES OF PISTON #95 AND RAM #98 ARE TO BE FREE OF GREASE.

105

WHEN REASSEMBLING BARREL AND CLUTCH SCREWS INTO EXISTING CRANKCASE, MAKE SURE SCREW IS STARTED IN EXISTING THREAD. DO NOT CREATE TWO SETS OF THREADS IN ONE HOLE.

