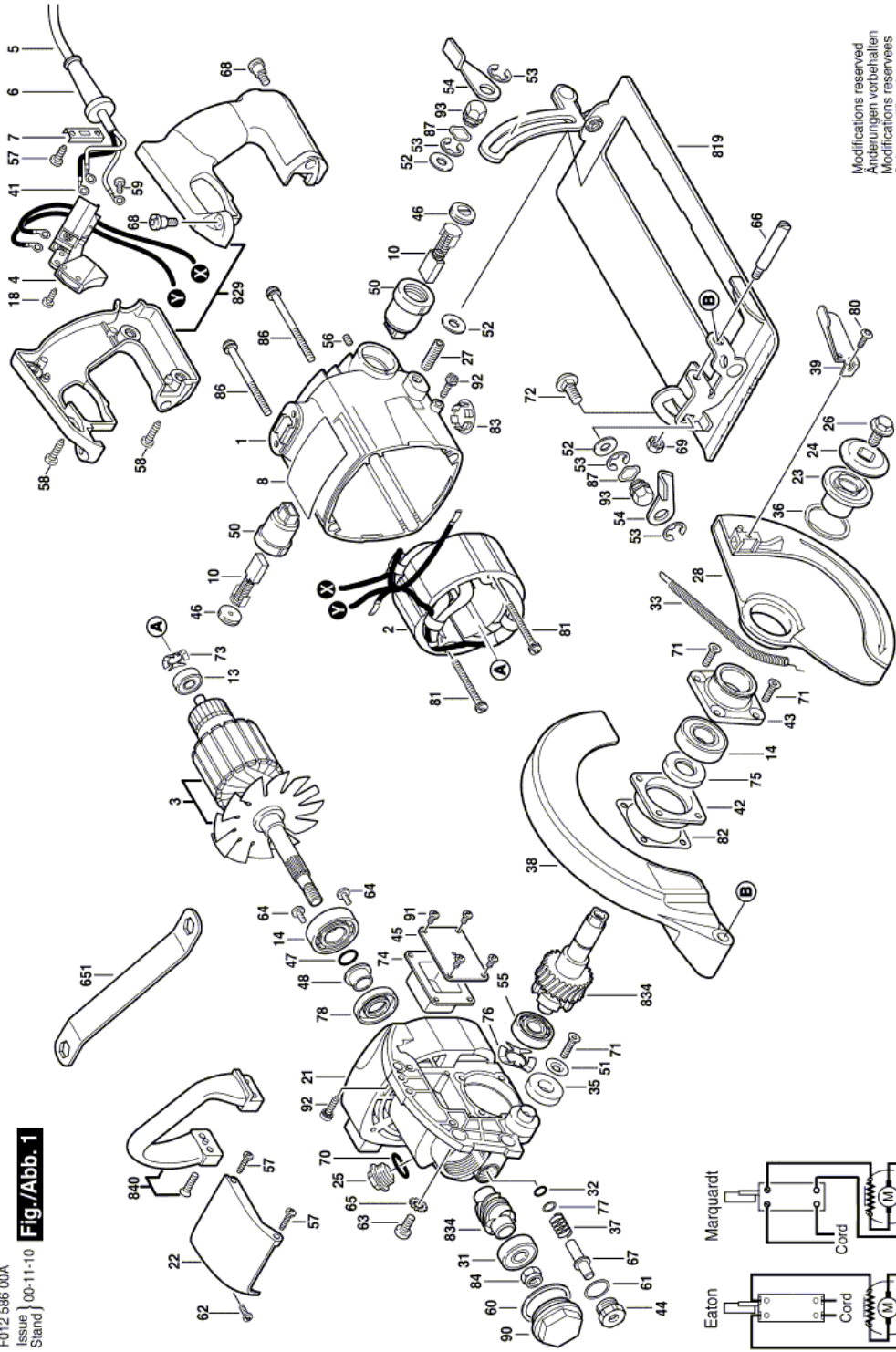


Item	Part Number	Description	Illustration	Price	Quantity
1	2 610 352 053	Housing	1	-,	1
2	2 610 931 901	Field 120V	1	-,	1
3	2 610 329 937	Armature 120V	1	-,	1
4	2 610 321 608	On-Off Switch	1	-,	1
5	1 619 X01 570	Cord	1	-,	1
6	1 619 X08 308	Grommet	1	-,	1
7	2 610 320 492	Clamp	1	-,	1
8	2 610 994 098	Nameplate	1	-,	1
10	1 619 X01 351	Carbon-Brush Set	1	-,	2
13	2 610 017 348	Deep-Groove Ball Bearing	1	-,	1
14	2 610 024 748	Ball Bearing	1	-,	2
18	2 610 901 971	Screw	1	-,	1
21	2 610 352 057	Gear Housing	1	-,	1
22	2 610 303 855	Cover	1	-,	1
23	1 619 X01 249	Washer	1	-,	1
24	1 619 X02 969	Washer	1	-,	1
25	2 610 023 384	Lock	1	-,	1
26	2 610 932 181	Collar bolt	1	-,	1
27	2 610 315 286	Bolt	1	-,	1
28	2 610 932 203	Pivoting Blade Guard	1	-,	1
31	2 610 017 875	Ball Bearing	1	-,	1
32	1 619 X03 779	O-Ring	1	-,	1
33	1 619 X06 627	Spring	1	-,	1
35	2 610 319 494	End stop	1	-,	1
36	2 610 341 359	Spring retaining ring	1	-,	1
37	2 610 023 394	Spring	1	-,	1
38	1 619 X01 177	Upper guard	1	-,	1
39	1 619 X01 237	Lever	1	-,	1
41	2 610 316 596	Terminal	1	-,	3
42	2 610 352 115	Pivot Plate	1	-,	1
43	2 610 352 091	Holding Plate	1	-,	1
44	2 610 023 324	Pin	1	-,	1
45	2 610 023 336	Cover	1	-,	1

Item	Part Number	Description	Illustration	Price	Quantity	
46	1 619 X01 268	Device cap		1	-,-	2
47	2 610 044 638	O-Ring		1	-,-	1
48	2 610 023 330	Seal		1	-,-	1
50	2 610 329 940	Carbon Brush Holder		1	-,-	2
51	2 610 004 341	Washer		1	-,-	1
52	2 610 912 616	Washer		1	-,-	3
53	2 610 931 544	Retaining snap ring		1	-,-	4
54	2 610 968 745	Lever		1	-,-	2
55	2 610 000 166	Ball Bearing		1	-,-	1
56	2 610 027 039	Set screw		1	-,-	2
57	2 610 315 299	Screw		1	-,-	4
58	2 610 315 380	Screw		1	-,-	4
59	1 619 X03 644	Screw		1	-,-	1
60	2 610 023 331	Washer		1	-,-	1
61	2 610 025 067	Washer		1	-,-	1
62	2 610 329 929	Screw		1	-,-	1
63	2 610 329 955	Screw		1	-,-	2
64	1 619 X01 786	Contact Screw		1	-,-	3
65	2 610 306 355	Washer		1	-,-	2
66	2 610 319 932	Bolt		1	-,-	1
67	2 610 325 655	Pin		1	-,-	1
68	2 610 353 799	Screw		1	-,-	4
69	2 610 902 381	Hex Nut		1	-,-	1
70	1 616 B10 364	O-Ring		1	-,-	1
71	2 610 027 002	Screw		1	-,-	5
72	2 610 016 325	Bolt		1	-,-	1
73	2 610 004 459	Spring Washer		1	-,-	1
74	2 610 023 335	Insert		1	-,-	1
75	2 610 025 245	Seal		1	-,-	1
76	2 610 931 237	Spring Washer		1	-,-	1
77	2 610 017 016	Washer		1	-,-	1
78	2 610 329 927	Seal		1	-,-	1
80	2 610 328 924	Screw		1	-,-	1
81	2 610 329 952	Screw		1	-,-	2
82	2 610 023 334	Sealing Plate		1	-,-	1
83	2 610 350 005	Plug		1	-,-	1
84	2 610 318 324	Nut		1	-,-	1
86	2 610 329 954	Screw		1	-,-	4
87	2 610 069 183	Spring Washer		1	-,-	2
90	2 610 923 336	Bearing cover		1	-,-	1
91	2 610 353 289	Tapping Screw		1	-,-	4
92	2 610 992 206	Hex Socket Head Cap Screw		1	-,-	2
93	2 610 318 265	Nut		1	-,-	2
651	1 619 X01 144	Socket wrench		1	-,-	1
819	1 619 X01 361	Base Unit		1	-,-	1
829	1 619 X01 363	Set Of Handles		1	-,-	1
834	1 619 X02 374	Set Of Gears		1	-,-	1
840	1 619 X01 422	Auxiliary Handle		1	-,-	1

F012 586 00A
 Issue } 00-11-10
 Stand }

Fig./Abb. 1



Modifications reserved
 Änderungen vorbehalten
 Modifications reserves
 Salvo modificaciones