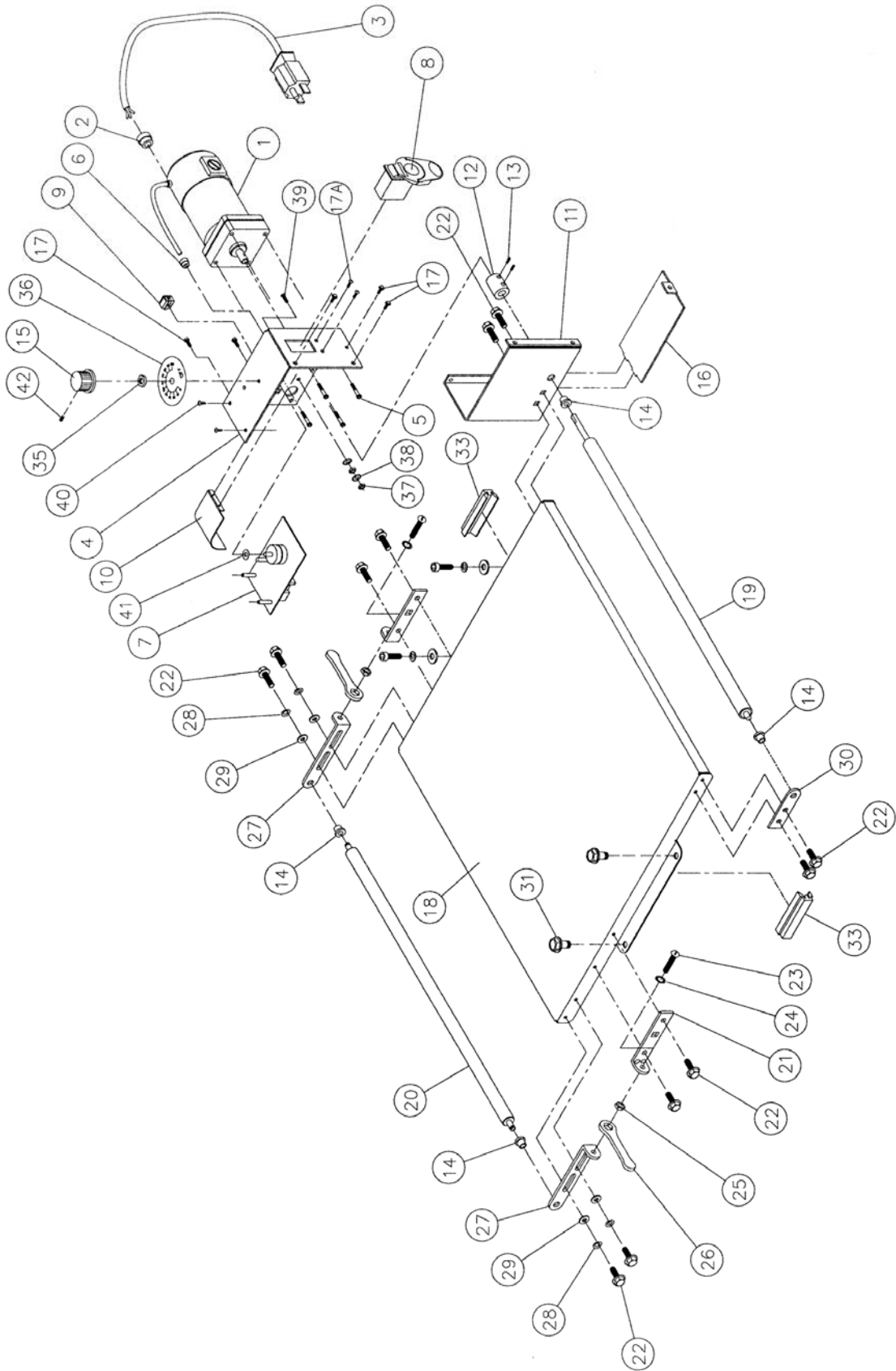


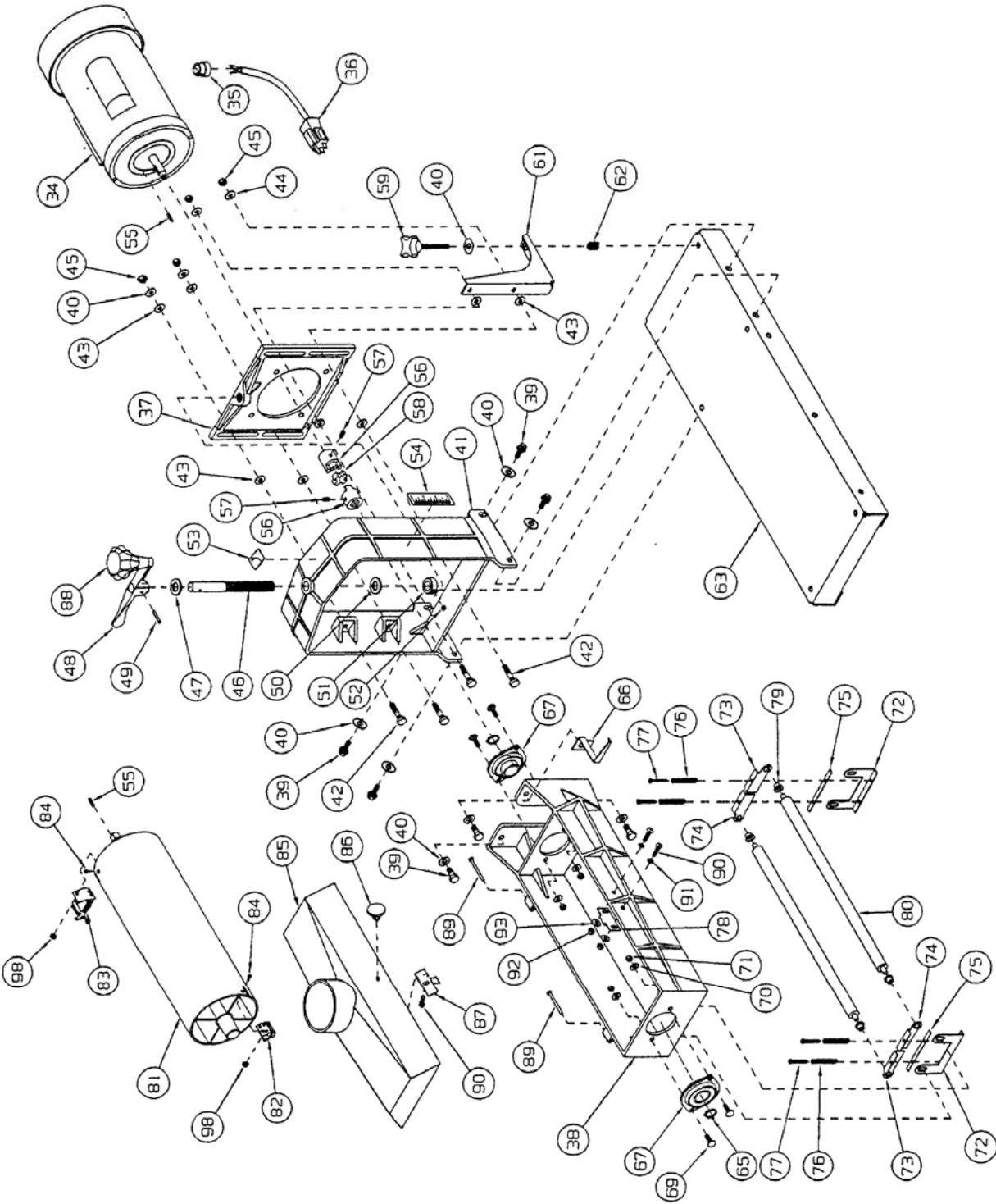
Conveyor and Motor Assembly



Parts List: Conveyor and Motor Assembly

Index No.	Part No.	Description	Size	Qty
1	3237359	Gear Motor	90 VDC	1
2	72-6014	Large Strain Relief		1
3	72-5336	Cord Set	115V – 75"	1
4	40-4904	Control Housing Bracket		1
5	TS-0206022	Socket Head Cap Screw	#10-32x1/2"	4
6	72-6101	Small Strain Relief		1
7	72-2250	SandSmart Controller		1
8	JSG96-135	On/Off Drum Switch		1
9	72-2120	Receptacle	115V	1
10	40-4018	Wiring Guard		1
11	40-4903	Controller Base Bracket		1
12	30-0122	Shaft Coupler		1
13	10-2702	Socket Head Set Screw	#10-32x1/4"	2
14	50-3105	Oil-Lite Bushing	I.D. 5/16"	4
15	72-2250-01	Knob		1
16	40-4022W	Control Housing Base Cover		1
17	10-9002	Hex Head Slotted Screw	#10-32x1/2"	5
17A	10-3103	Phillips Pan Head Machine Screw	#6-32x1/2"	2
18	40-4010	Conveyor Bed		1
19	30-3050-01	Drive Roller		1
20	30-3010-01	Driven Roller		1
21	41-0004	Take-Up Base Bracket		2
22	10-9010	Hex Washer Head Bolt	1/4"-20x3/4"	12
23	10-3213	Slotted Round Head Screw	1/4-20x1-3/4"	2
24	11-0504	Lock Washer, Internal Tooth	1/4"	2
25	TS-0570011	Hex Nut	1/4"-20	2
26	40-0260	Wrench		2
27	41-0003	Take-Up Slide Bracket		2
28	20-1161	Wave Washer	1/4"	4
29	TS-0680021	Flat Washer	1/4"	4
30	40-0005	Drive Roller Support Bracket		1
31	10-9106	Hex Washer Head Bolt	5/16"-18x3/4"	4
32	60-0316-P	Conveyor Belt (not shown)	100 grit	1
33	98-0080	Tracker Kit		1
35	72-2250-04	Hex Nut	5/16"-24	1
36	72-2250-02	Speed Adjustment Label		1
37	TS-0560081	Hex Nut	#10-32	2
38	TS-073203	Lock Washer, Internal Tooth	#10	2
39	TS-081D022	Pan Head Machine Screw	#10-32x1/2"	1
40	20-0777	Pan Head Self-Tapping Screw	5/32x1/2"	2
41	72-2250-03	Flat Washer	5/16	1
42	72-2250-05	Slotted Set Screw	#8-36UNFx5/16"	1

Drum Head Assembly

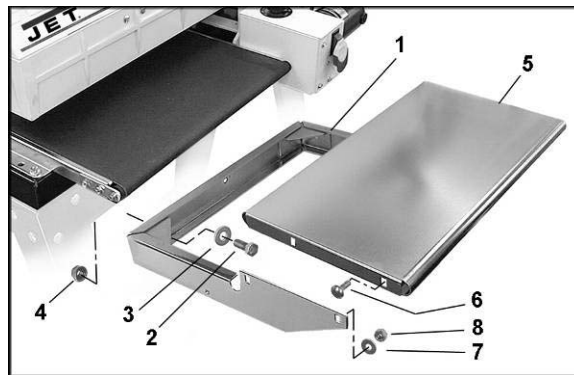


Parts List: Drum Head Assembly

Index No.	Part No.	Description	Size	Qty
34	70-4101A	Motor	1-1/2HP, 110-120V	1
	70-4101-1	Motor Fan (not shown)		1
	70-4101-2	Motor Fan Cover (not shown)		1
	C-300125A	Capacitor (not shown)	300MFD, 125VAC	1
35	72-6104	Large Strain Relief		1
36	72-5343	Cord Set		1
37	30-3018	Motor Mount Slide		1
38	30-3016-02	Drum Carriage		1
39	TS-0060061	Hex Cap Screw	3/8-16x1-1/4"	8
40	6861201	Wrought Washer	5/16"	13
41	30-6000-02	Shroud		1
42	30-3028	Stud		4
43	50-3076	Oil-Lite Washer	I.D. 5/16"	8
44	11-0510-05	Washer	I.D. 5/16" (small O.D.)	2
45	TS-0640082	Nylon Lock Hex Nut	5/16"-24	4
46	30-3012	Height Adjustment Screw		1
47	50-3080	Oil-Lite Washer	I.D. 5/8"	1
48	30-0021	Height Adjustment Handle		1
49	6626029	Roll Pin	3/16x1"	1
50	80-2324	Nylon Flat Washer	I.D. 5/8"	1
51	20-1104	Shaft Locking Collar	I.D. 5/8"	1
52	10-4020-04	Socket Head Set Screw (Collar)	5/16"-18x1/4"	1
53	94-1668	Height Direction Label		1
54	94-1670	Depth Gauge		1
55	20-0762	Key Stock	3/16" Sq. x 3/4"	2
56	50-2207	Drum Shaft Coupling		2
57	10-8802	Socket Head Set Screw	1/4"-20x1/4"	2
58	50-2209	Spider		1
59	80-3136	Adjusting Knob		1
61	40-4006	Drum Adjusting Bracket		1
62	20-3216	Spring		1
63	40-4005	Power Feed Bed Base		1
65	20-0753	Retaining Ring		2
66	40-3167	Depth Gauge Needle		1
67	50-3089	Drum Bearing		2
69	10-1205	Carriage Bolt	5/16"-18x1"	4
70	TS-0680031	Flat Washer	5/16"	8
71	6515001	Hex Nut	5/16"-18	4
72	40-0304	Tension Roller Bracket		2
73	41-0302	Tension Roller Suspension Bracket – Right		2
74	41-0303	Tension Roller Suspension Bracket – Left		2
75	80-1060	Tension Roller Bracket Pad		2
76	20-3211	Tension Roller Spring		4
77	10-3108	Phillips Fillister Head Screw	#8-32x1"	4
78	40-3166	Dust Cover Catch		1
79	50-3105	Oil-Lite Bushing	I.D. 5/16"	4
80	30-3051-01	Tension Roller		2
81	2148003	Sanding Drum		1
82	21-1173	Outboard Abrasive Fastener		1
83	21-1172	Inboard Abrasive Take-Up Fastener		1
84	10-4009-06	Phillips Flat Head Machine Screw	#6-32x3/8"	2
85	80-2002	Dust Cover		1
86	80-3137	Dust Cover Knob		1
87	40-3168	Dust Cover Latch		1
88	80-3131	Height Adjustment Knob		1
89	20-0775	Hinge Pin		2
90	10-4007-10	Slotted Round Head Screw	1/4"-20x5/8"	3

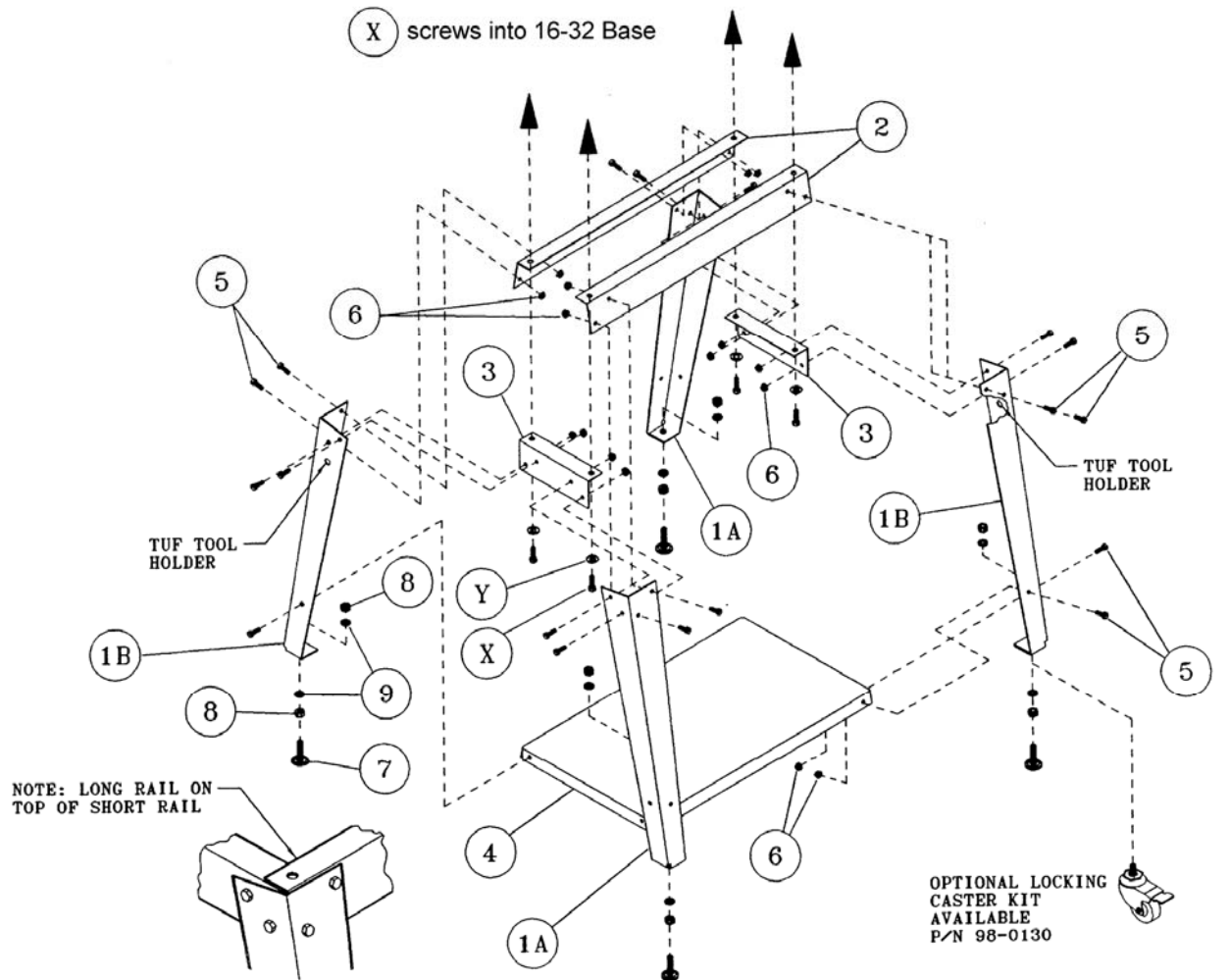
91	11-1000-04	Lock Washer, Internal Tooth	1/4"	2
92	TS-0561011	Hex Nut	1/4"-20	2
93	TS-0680021	Flat Washer	1/4"	2
94	98-0010	Handle Kit (includes index #46,48,49) (not shown)		
95	51-2200	Coupler Kit (includes index #56,67,58) (not shown)		
98	12-9001	Nylon Insert Lock Nut	#6-32	1
99	98-0060	TufTool™ (not shown)		1
	99-1002	16-32 Sander Demo Video (not shown)		1

Parts List: Infeed/Outfeed Tables (Optional Accessory)



Index No.	Part No.	Description	Size	Qty
	98-1601	Infeed/Outfeed Tables, 16"		
1	40-0330	Table Bracket		2
2	10-9205	Hex Cap Screw	3/8-16x1"	4
3	11-9103	Flat Washer, Hardened	5/16"	4
4	12-0209	Flanged Lock Nut	3/8"-16	4
5	40-0331	Extension Table		2
6	6714264	Carriage Bolt	1/4-20x3/4"	8
7	6861107	Flat Washer	1/4"	8
8	6514001	Hex Nut	1/4"-20	8

Parts List: Stand Assembly



Index No.	Part No.	Description	Size	Qty
1A.....	40-4040.....	Left Leg.....		2
1B.....	40-4041.....	Right Leg (with TufTool holder).....		2
2.....	40-4042.....	Long Rail.....		2
3.....	40-4043.....	Short Rail.....		2
4.....	98-1610.....	Shelf.....		1
5.....	10-1206.....	Carriage Bolt.....	5/16"x5/8"	24
6.....	12-0207.....	Flanged Lock Nut.....	5/16"	24
7.....	20-0655.....	Leveling Foot.....		4
8.....	TS-0561031.....	Hex Nut.....	3/8"	8
9.....	TS-0680041.....	Flat Washer.....	3/8"	8

Electrical Connections

GEARMOTOR CONTROLLER SCHEMATIC
110V AC TO VARIABLE 90V DC

