



SERVICE PARTS LIST

BULLETIN NO.

55-40-6000

| SPECIFY CATALOG NO. AND SERIAL NO. WHEN ORDERING PARTS | | | REVISED BULLETIN | DATE |
|--|----------------|----------------------|------------------|--|
| CIRCULAR SAW with TILT-LOK® HANDLE | | | | Nov. 2005 |
| CATALOG NO. | 6380-51 | SERIAL NUMBER | 190A | WIRING INSTRUCTION 58-03-1320 |

EXAMPLE:



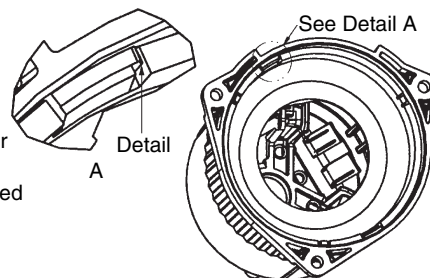
Component Parts (Small #) Are Included
When Ordering The Assembly (Large #).

| FIG. | PART NO. | DESCRIPTION OF PART | NO. REQ. |
|------|------------|---|----------|
| 1 | 02-04-0850 | Ball Bearing | (1) |
| 2 | 02-04-1850 | Ball Bearing | (1) |
| 3 | 02-50-2423 | Needle Bearing | (1) |
| 4 | 05-89-0055 | Socket Hd. Screw | (2) |
| 5 | 05-78-0305 | Switch Screw | (4) |
| 6 | 06-10-0710 | 1/4" Carriage Bolt | (1) |
| 8 | 06-75-5850 | 5/16 -18 L.H. Thread Bolt | (1) |
| 9 | 06-82-5314 | 10-24 x 1/2" Pan Hd. Taptite T-25 | (13) |
| 10 | 06-82-5358 | 12-24 x 3/4" Pan Hd. Taptite T-27 | (3) |
| 11 | 06-82-5474 | 10-24 x 3/4" Pan Hd. Taptite T-25 | (1) |
| 12 | 06-82-7270 | 8-16 x 5/8" Pan Hd. St. Plastite T-20 | (10) |
| 13 | 06-82-7395 | 8-16 x 1-3/4" Pan Hd. Plastite T-20 | (2) |
| 14 | 06-82-8875 | 5/8"-DG50 Thread Form Screw T-20 | (3) |
| 16 | 12-20-6380 | Service Nameplate Kit | (1) |
| 17 | 14-20-1325 | Suppressor Assembly | (1) |
| 18 | 16-74-0060 | Armature | (1) |
| 19 | 18-74-1045 | Field | (1) |
| 20 | 22-18-0085 | Brush Assembly | (2) |
| 21 | 22-22-0030 | Brush Tube Assembly | (2) |
| 22 | 22-56-0857 | Blade Housing Assembly | (1) |
| 23 | 48-76-5012 | Quik-Lok Cord Set | (1) |
| 23 | 22-64-0684 | Quik-Lok Cord Set (Australia) | (1) |
| 24 | 23-66-2117 | Switch | (1) |
| 25 | 23-94-1180 | Lead Assembly | (1) |
| 26 | 23-94-1185 | Lead Assembly | (1) |
| 27 | ----- | Upper Guard Cover | (1) |
| 28 | 14-67-0260 | Bevel Bracket Assembly | (1) |
| 29 | 28-14-0110 | Gearcase | (1) |
| 30 | 14-32-0135 | Upper and Lower Guard Kit (Incl. 27 & 49) | (1) |
| 31 | 31-05-0045 | Baffle | (1) |
| 32 | 31-15-0461 | Motor Cover | (1) |
| 33 | 31-44-0060 | Front Handle | (1) |
| 34 | 31-44-0083 | Right Handle Halve | (1) |
| 35 | 31-44-0093 | Left Handle Halve | (1) |
| 36 | 31-44-2157 | Handle Lever | (1) |
| 37 | 31-50-0050 | Motor Housing | (1) |
| 38 | 31-52-0015 | Depth Lever | (1) |
| 39 | 31-52-0025 | Guard Lever | (1) |
| 40 | 31-76-0016 | Shuttle | (1) |
| 41 | 32-75-3205 | Gear | (1) |
| 43 | 34-40-1375 | O-Ring | (2) |
| 44 | 34-40-1380 | O-Ring | (1) |
| 45 | 34-60-0320 | External Retaining Ring | (1) |
| 46 | 34-60-2330 | Klip Ring | (1) |
| 47 | 38-50-0065 | Spindle | (1) |
| 48 | 40-50-0055 | Compression Spring | (2) |
| 49 | 40-50-0185 | Guard Spring | (1) |
| 50 | 40-50-0270 | Compression Spring | (1) |
| 51 | 40-50-8040 | Spring | (1) |
| 52 | 42-16-0160 | Handle Band | (1) |
| 53 | 42-38-0222 | Rubber Bumper | (1) |
| 54 | 42-42-0275 | Spindle Lock Button | (1) |
| 55 | 43-34-0480 | Inner Flange | (1) |
| 56 | 43-34-0485 | Outer Flange | (1) |
| 57 | 43-78-0155 | Hub Assembly (With Bearing) | (1) |
| 58 | 43-97-0075 | Riving Knife | (1) |
| 59 | 43-98-0615 | Knob | (1) |
| 60 | 44-10-0130 | Bevel Adjustment Lever | (1) |
| 61 | 44-14-0225 | Link Plate | (1) |
| 63 | 44-20-0510 | Spindle Lock Pin | (1) |
| 64 | 44-20-0640 | Slide Lock | (1) |
| 65 | 44-40-0780 | Adjustment Nut | (1) |
| 66 | 44-52-0682 | Grip | (1) |
| 67 | 44-60-0075 | Thru Pin | (1) |
| 68 | 44-60-0085 | Tapped Pin | (1) |
| 69 | 44-60-1180 | Pivot Pin | (1) |

| FIG. | PART NO. | DESCRIPTION OF PART | NO. REQ. |
|------|------------|---------------------|----------|
| 70 | 44-66-0075 | Retaining Plate | (1) |
| 72 | 44-66-0201 | Lock Plate | (1) |
| 73 | 44-72-0050 | Pointer | (1) |
| 74 | 45-04-0485 | Bumper Screw | (1) |
| 76 | 45-08-0415 | Depth Shaft | (1) |
| 77 | 45-16-0165 | Shoe Assembly | (1) |
| 78 | 45-22-0605 | Lower Guard Sleeve | (1) |
| 79 | 45-76-0331 | Dust Chute | (1) |
| 80 | 45-88-0577 | Wave Spring washer | (2) |
| 82 | 45-88-1545 | Washer | (1) |
| 83 | 45-88-8460 | 5/16 Washer | (1) |
| 84 | 49-96-0345 | Hex Key | (1) |
| | 49-22-4165 | Rip Fence Assembly | (1) |

FIG. NOTE

- 1 Orient the ball bearing so that the seal faces the commutator.
- 3,41 Orient the needle bearing such that the text is facing the gear. Press the bearing 0,4mm subflush to the gear cavity wall.
- 11 Tighten the handle lever screw such that it requires 2-3N force to close the handle lever to the locked position.
- 28,73 Position the pointer such that the arrow indicates between the zero and one degree mark on the bevel plate scale. Loosen front handle screws to adjust pointer.
- 29,31 Orient the baffle with the crush ribs aligned with the screw holes in the motor housing and the locator tabs aligned and seated as shown.
- 30 Functionally check the lower guard with the saw set at full depth of cut and zero degree bevel. Place the saw upside down with the shoe horizontal. Retract the lower guard 100%. Release the lower guard lever. The guard should return in a brisk manner.
- 38 When tight, the depth adjustment lever should be parallel (±20°) with the shoe.
- 45 Orient the external retaining ring such that the beveled face is towards the guard.
- 60 When tight, the bevel adjustment lever should be bottomed out on the shoe. (Up to 2,5mm off the shoe is acceptable).
- 82 Orient the washer such that the rounded edge is towards the depth rail.
- 83 Orient the washer such that the rounded edge is towards the bevel plate.



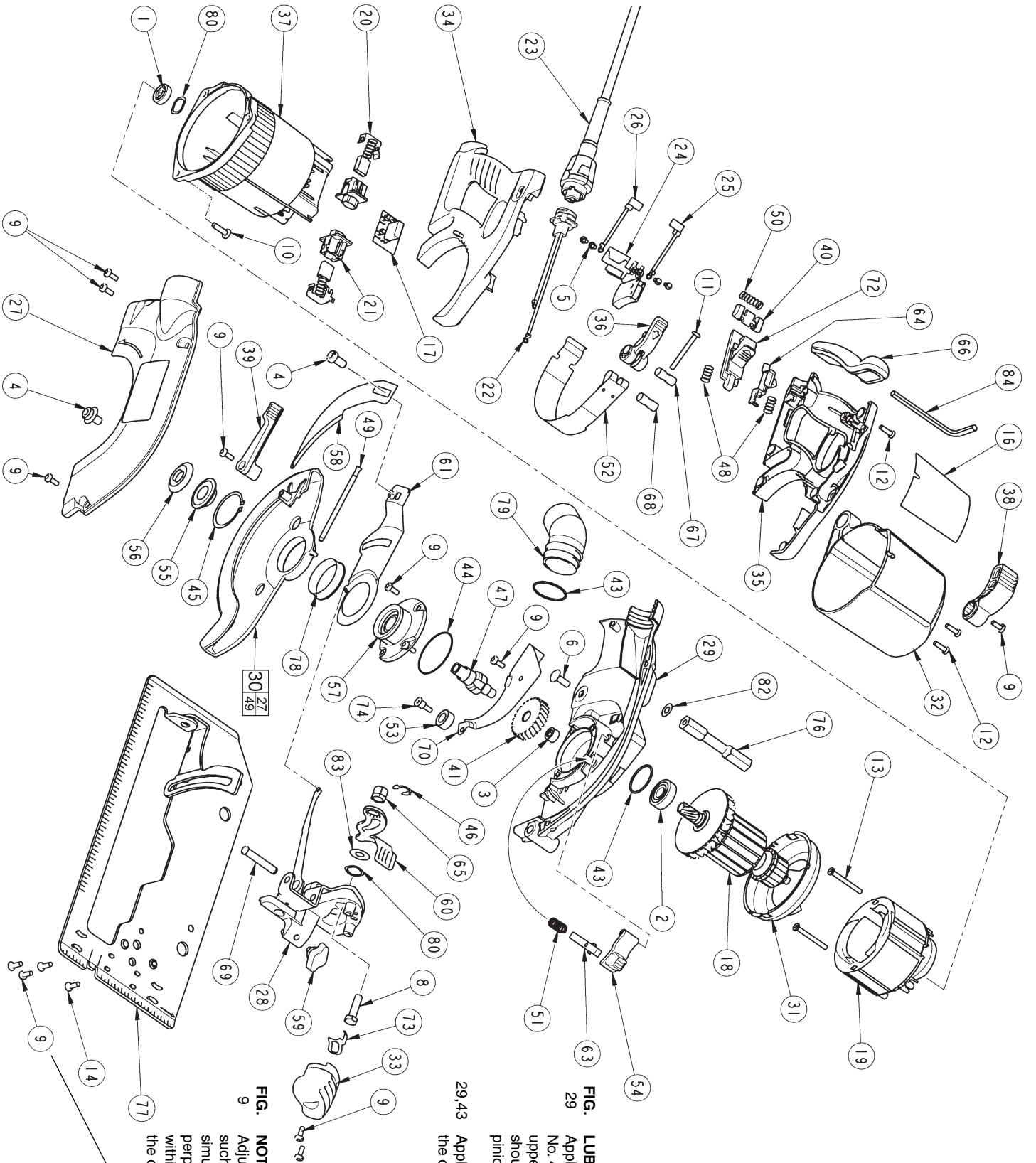


FIG. 29
LUBRICATION
 Apply 10-11ml "Y" Grease, No. 49-08-5270, to gear bore of upper guard gearcase. The grease should be directed toward the pinion end of the armature.

29.43 Apply a light film of vegetable oil to the o-ring before assembling.

FIG. 9
NOTE
 Adjust the "zero set" screw such that a disk, simulating a blade, is perpendicular to the shoe within 1/2 degree (0.5mm) at the outer diameter of the disk.

NOTE
 Adjust the "zero set" screw such that a disk, simulating a blade, is perpendicular to the shoe within 1/2 degree (0.5mm) at the outer diameter of the disk.