

SERVICE PARTS LIST

BUL. 54-40-4207

TWO SPEED SAWZALL

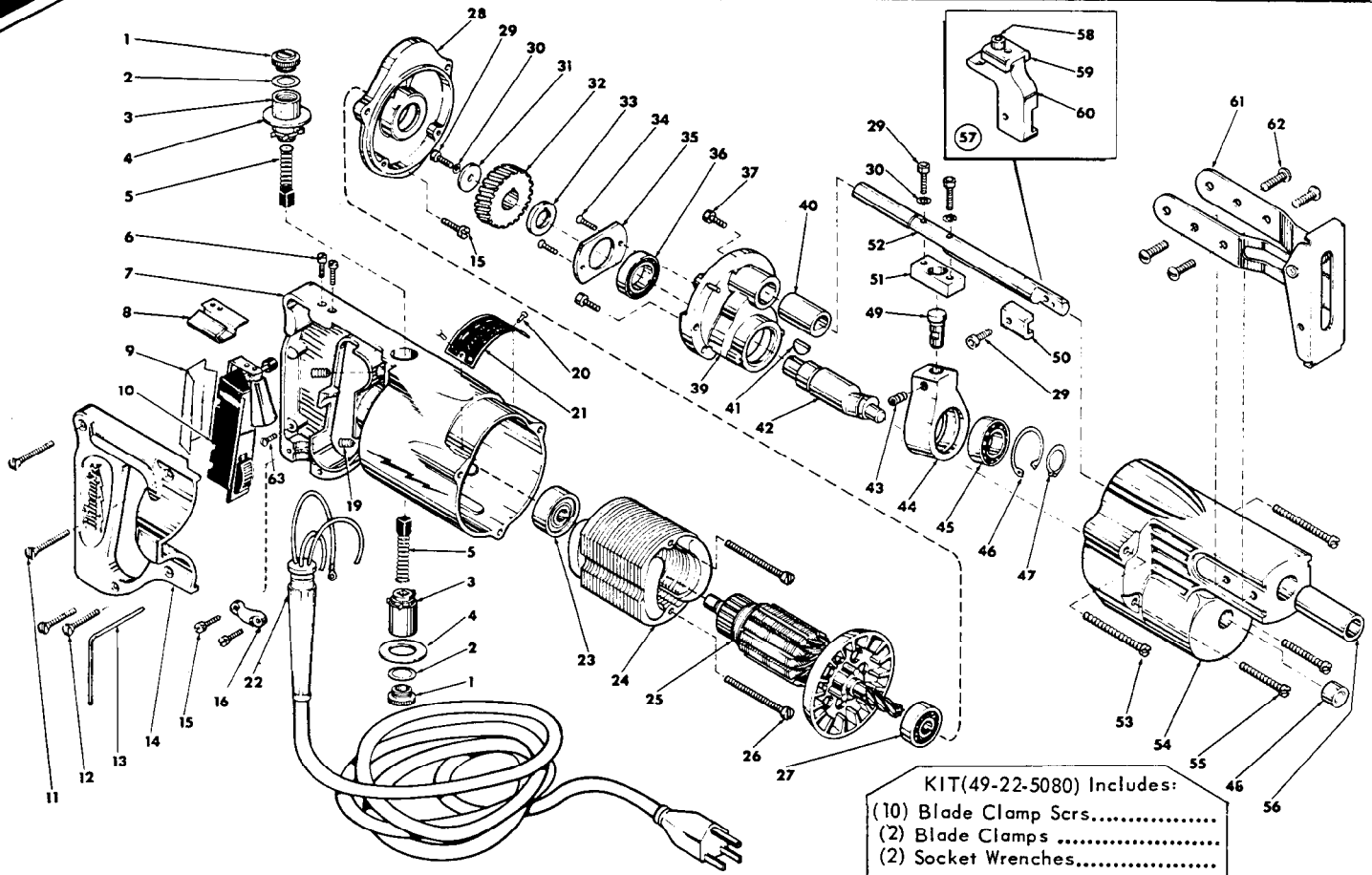
REVISED BUL 54-40-4206 DATE April '73

Catalog No. 6510

Starting Serial No. **284-257845**

WIRING INSTR. **58-01-0231**

Both Model and Serial No. must be furnished to obtain correct parts.



KIT(49-22-5080) Includes:
 (10) Blade Clamp Scrs.....
 (2) Blade Clamps.....
 (2) Socket Wrenches.....

FIG.	PART NO.	DESCRIPTION OF PART	NO.REQ.	FIG.	PART NO.	DESCRIPTION OF PART	NO.REQ.
1	23-44-0060	Brush Retaining Screw	(2)	33	45-36-0121	Gear Spacer	
2	23-86-0050	Washer	(2)	34	06-81-2500	6-32x3/8 Flat Hd. Screw	(2)
3	22-22-0080	Brush Holder	(2)	35	44-86-0090	Bearing Retainer	
4	23-86-0110	Washer	(2)	36	02-04-1510	Ball Bearing	
5	22-18-0100	Carbon Brush	(2)	37	06-81-6150	8-32x 1/2 Fil.Hd. Sem	(2)
6	06-81-5800	6-32x5/16 Fil.Hd. Sem	(2)	39	28-72-1001	Bearing Plate	
7	28-50-4485	Motor Housing (Includes Fig. Nos. 11, 12 and 14)		40	42-24-0101	Spindle Bearing	
8	42-68-0225	Wire Baffle		41	06-42-1200	Woodruff Key	
★9	23-16-0660	Insulator		42	36-92-0601	Wobble Shaft	
★10	23-66-0482	Switch		43	06-83-2645	1/4-20x3/8 Hdls. Set Screw	
11	06-81-3750	8-32x1 Oval Hd. Screw	(2)	44	28-72-9001	Wobble Plate	
12	06-81-3700	8-32x7/8 Oval Hd. Screw	(2)	45	02-04-1510	Ball Bearing	
13	49-96-0070	Socket Screw Wrench		46	34-80-2355	Retaining Ring	
14	28-20-3601	Handle Cover		47	34-60-1200	Retaining Ring	
15	06-81-6150	8-32x1/2 Fil.Hd. Sem	(3)	48	02-50-1640	Needle Bearing	
16	28-17-0400	Clamp Strap		49	45-58-0050	Ball End Stud	
17	48-66-4080	Socket Wrench Holder (Not Shown)		50	42-68-0073	Blade Clamp	
19	06-83-2650	1/4-20x3/8 Knrl Set Screw	(2)	51	42-28-0050	Spindle Block	
20	06-85-0200	6x1/4 R d. Hd. T type Z Screw	(2)	52	38-50-2002	Spindle	
21	12-99-0031	Nameplate		53	06-81-6650	8-32x1-3/4 Fil.Hd. Sem	(2)
22	22-64-0380	Cord Set		54	28-14-0571	Gear Case	
23	02-04-0970	Ball Bearing		55	06-81-6500	8-32x1-3/8 Fil.Hd. Sem	(2)
24	18-42-1120	115 Volt Field		56	42-24-0091	Spindle Bearing	
25	16-42-1170	115 Volt Armature		57	48-03-2000	Offset Blade Adapter Assy. (Includes Fig. Nos. 58, 59 and 60)	
26	06-81-6600	8-32x1-3/4 Fil.Hd. Sem	(2)	58	06-75-2400	10-32x1/2 Skt. Hd. Screw	
27	02-04-0940	Ball Bearing		59	42-68-0073	Blade Clamp	
28	28-28-0341	Diaphragm		60	28-02-0051	Offset Blade Adapter	
29	06-75-2400	10-32x1/2 Skt. Hd. Screw	(4)	61	45-16-0055	Pivot Shoe Assembly	
30	06-97-3400	Lock Washer	(3)	62	06-81-9525	10-24x1/2 Truss Head Sem	(4)
31	45-88-0180	Retaining Washer		63	06-81-8625	6-32x1/4 Ground Screw	
32	32-40-1101	Intermediate Gear					