



SERVICE PARTS LIST

BULLETIN NO.
54-40-4148

SPECIFY CATALOG NO. AND SERIAL NO. WHEN ORDERING PARTS		REVISED BULLETIN	DATE
TWO SPEED D.I. SAWZALL		54-40-4147	Mar. '93
CATALOG NO. 6512	STARTING SERIAL NO. 483-159892	WIRING INSTRUCTION 58-01-0262	

EXAMPLE:
Component Parts (Small #)
Are Included When Ordering
The Assembly (Large #).

00 0

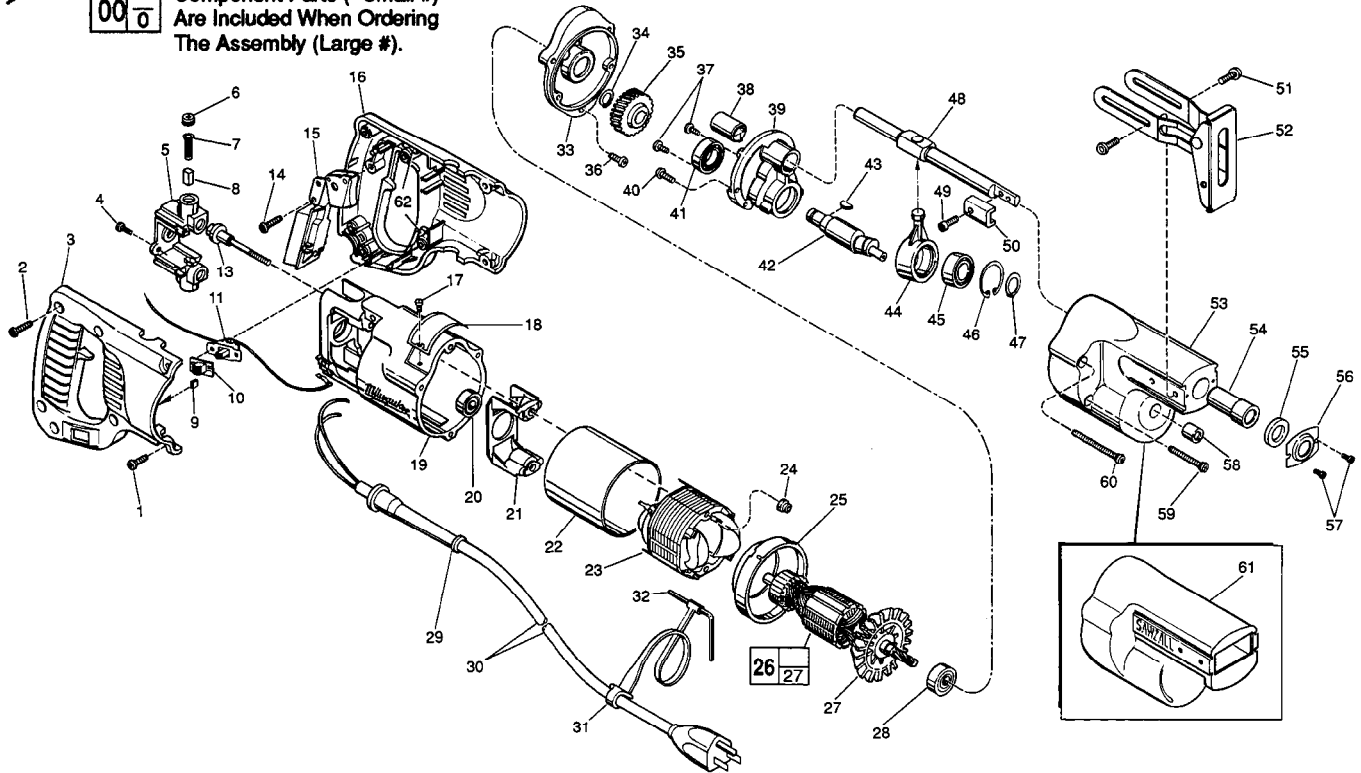


FIG.	PART NO.	DESCRIPTION OF PART	NO. REQ.
	1	8-32 x 1/2" Slot Pan Hd. T-20	(4)
★	2	8-16 x 5/8" Pan Hd. Plastite T-20	(5)
★	3	Right Handle Half	(1)
	4	6-32 x 3/8" Truss Hd. Taptite Screw	(2)
★	5	Brush Holder Assembly	(1)
	6	Brush Retaining Cap	(2)
	7	Brush Spring	(2)
	8	Carbon Brush	(2)
	9	Bumper	(2)
	10	Switch Cap	(1)
★	11	Switch Assembly	(1)
★	13	8-32 x 2-1/4" Field Bolt	(2)
★	14	8-16 x 5/8" Pan Hd. Plastite T-20	(1)
	15	On - Off Switch	(1)
★	16	Left Handle Half	(1)
	17	Nameplate Screw	(2)
★	18	Nameplate Blank	(1)
★	19	Motor Housing	(1)
	20	Ball Bearing	(1)
★	21	Coil Shield	(1)
	22	Field Insulator	(1)
★	23	18-31-0200	(1)
	24	120 V. Field	(1)
	25	8-32 Flexlock Hex Nut	(2)
	26	120 V. Armature	(1)
★	27	Fan Assembly	(1)
	28	Ball Bearing	(1)
★	29	Cord Protector	(1)
	30	Cord Set	(1)
	31	Key Holder	(1)
	32	5/32" Socket Wrench	(1)
★	33	Diaphragm	(1)
	34	External Retaining Ring	(1)
	35	Intermediate Gear	(1)
	36	8-32 x 5/8" Fil. Hd. Taptite T-20	(1)
	37	6-32 x 3/8" Truss Hd. Taptite Screw	(2)

FIG.	PART NO.	DESCRIPTION OF PART	NO. REQ.
	38	Rear Spindle Bearing	(1)
	39	Bearing Plate	(1)
	40	8-32 x 1/2" Fil. Hd. Taptite T-20	(2)
	41	Ball Bearing	(1)
★	42	Wobble Shaft	(1)
	43	Woodruff Key	(1)
	44	Wobble Plate	(1)
	45	Ball Bearing	(1)
	46	Internal Retaining Ring	(1)
	47	Retaining Ring	(1)
	48	Reciprocating Spindle	(1)
	49	10-32 x 1/2" Socket Hd. Screw	(1)
	50	Blade Clamp	(1)
	51	10-24 x 1/2" Pan Hd. Taptite Sems	(4)
	52	Pivot Shoe Assembly	(1)
	53	Gear Case	(1)
	54	Spindle Bearing	(1)
	55	Felt Seal	(1)
	56	Seal Retainer	(1)
	57	4-40 x 3/16" Pan Hd. Taptite Screw	(2)
	58	Needle Bearing	(1)
	59	8-32 x 1-3/8" Fil. Hd. Taptite T-20	(2)
	60	8-32 x 1-7/8" Fil. Hd. Taptite T-20	(2)
	61	Gear Case Insulator	(1)
★	62	Foam Slug Kit - 10 Slugs	(2)

FIG. NOTES
34,46, Burr Side Out.
47
38 V-Notch Press In From Diaphragm Side.
40 Apply Type 242 Blue Loctite.

FIG. LUBRICATION
35,39 1/2 Oz. Type "A" Grease, No. 49-08-0800.
53 2-1/2 Oz. Type "B" Grease, No. 49-08-0600.

MILWAUKEE ELECTRIC TOOL CORPORATION
13135 W. LISBON RD., BROOKFIELD, WI 53005