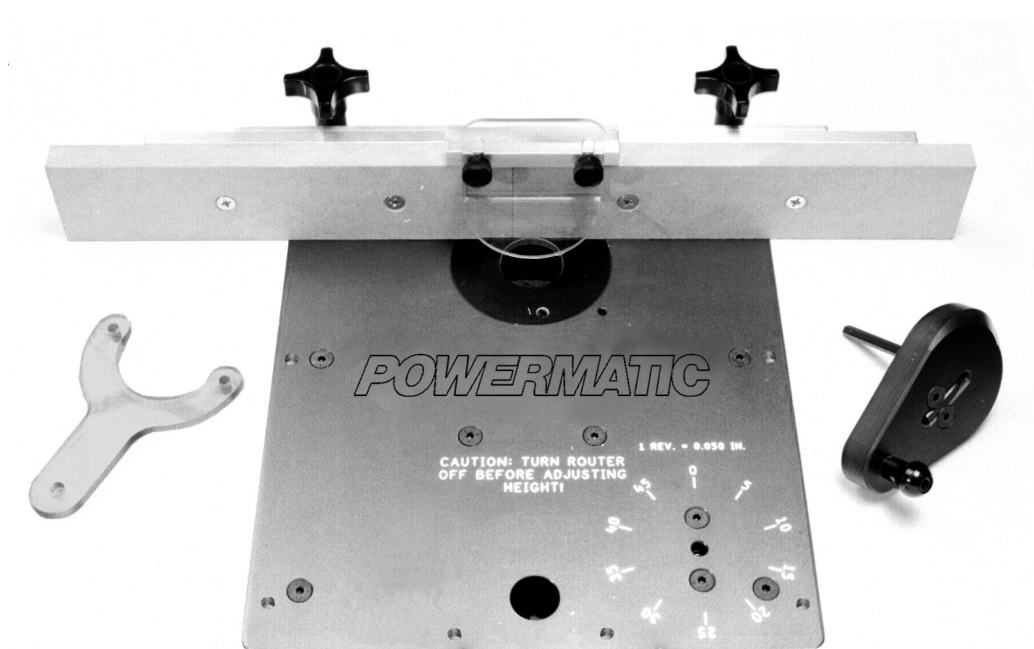


POWERMATIC[®]

WMH TOOL GROUP

Installation Instructions and Parts Manual Rout-R-Lift and Fence Assembly

For Item # 6682004

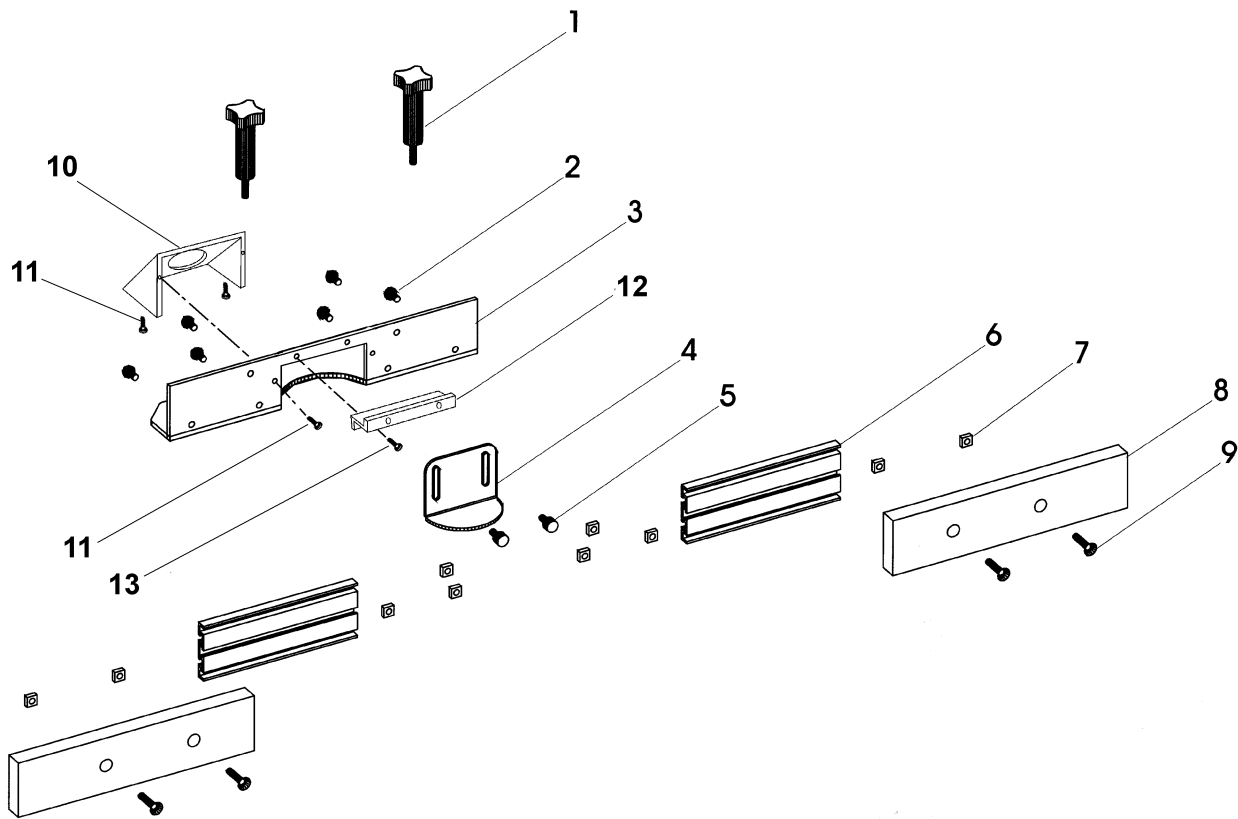


WMH TOOL GROUP

2420 Vantage Drive
Elgin, IL 60123
Ph: 800-274-6848
www.wmhtoolgroup.com

Part No. M-0460261
Revision D 11/03
Copyright © WMH Tool Group

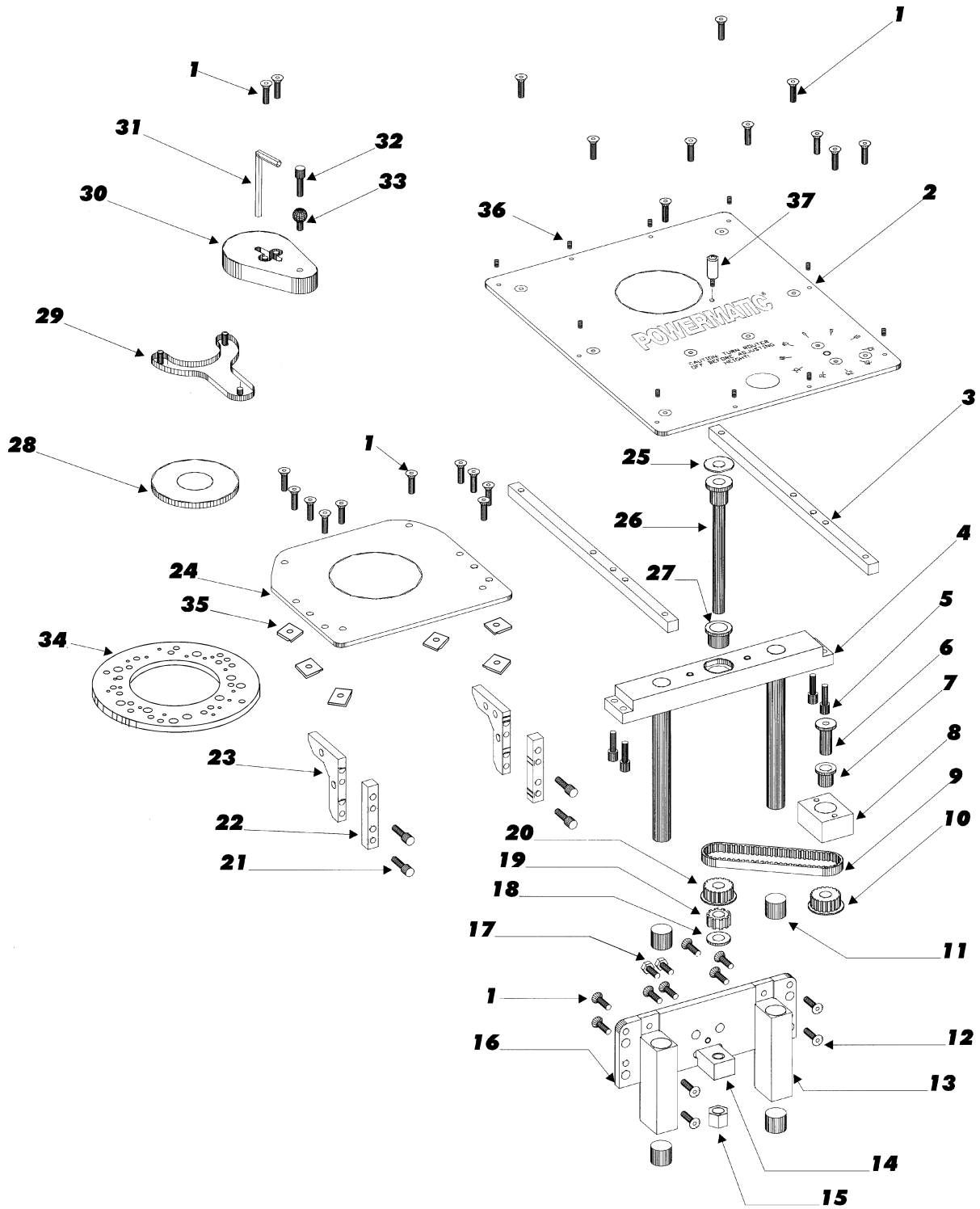
Rout-R-Lift Deluxe Fence Assembly



Index No.	Part No.	Description	Size	Qty.
.....	6682004F	Rout-R-Lift Deluxe Fence (Items 1 thru 13)		
1	XLIFT-M0026	Fence Clamping Knobs		2
2	XLIFT-E0040	Button Head Screw	1/4-20 x 1/2"	6
3	PLIFT-E0032	Aluminum Fence Bracket	2-1/2" x 2-1/2" x 3/16" x 14"	1
4	XLIFT-M0039	Fence Guard	1/8 Polycarbonate	1
5	XLIFT-M0028	Guard Clamping Knob		2
6	PLIFT-E0030	Aluminum Fence Extension	7/16" x 2-1/2" x 7"	2
7	XLIFT-F0028	Square Nut	1/4-20	10
8	XLIFT-M0040	MDF Sub Fences	3/4" x 2-1/2" x 10-3/4"	2
9	XLIFT-F0017	Flat Head Screws	1/4-20 x 1"	4
10	XLIFT-E0032A	Plastic Dust Collector Connector		1
11	TS-081A032	Pan Head Phillips Machine Screw	#6-32 x 1/2"	4
12	PLIFT-E0032B	Aluminum Safety Guard Bracket		1
13	TS-081A012	Pan Head Phillips Machine Screw	#6-32 x 1/4"	2

NOTE: The above specifications were current at the time this manual was published, but because of our policy of continuous improvement, WMH Tool Group reserves the right to change specifications without notice and without incurring obligations.

Rout-R-Lift Assembly



Rout-R-Lift Assembly

Index No.	Part No.	Description	Size	Qty.
1	XLIFT-F0001	Flat Head Cap Screw	1/4-20 x 3/4	28
2	PLIFT-P0003-1	Aluminum Main Plate	14-3/4 x 11-3/4 x 1/4	1
3	XLIFT-S0001-1	Steel Side Supports	1/2 x 1/2 x 13-1/4	2
4	XLIFT-E0001-1	Aluminum Shaft Mounting Block	1 x 1-1/2 x 10.1	1
5	XLIFT-F0002	Socket Head Cap Screw	1/4-20 x 7/8	4
6	XLIFT-M0001	Steel Drive Pulley Spindle		1
7	XLIFT-M0006	Bronze Flange Bearing	3/4 x 7/8 x 3/4	1
8	XLIFT-E0001-2	Drive Pulley Mounting Block	1 x 1-1/2 x 2	1
9	XLIFT-M0011	Rubber Timing Belt	130 XL x 3/8	1
10	XLIFT-M0005	Drive Pulley (Delrin)	20 XL x 3/8	1
11	XLIFT-M0009	Bronze Sleeve Bearing	3/4 x 7/8 x 3/4	4
12	XLIFT-F0005	Flat Head Cap Screw	1/4-20 x 1	4
13	XLIFT-E0001-3	Aluminum Bearing Mounts	1 x 1-1/2 x 4	2
14	XLIFT-S0002-1	Steel Carriage Nut	3/4 x 1 x 1-1/2	1
15	XLIFT-F0003	Nylon Insert Lock Nut	1/2-20	1
16	XLIFT-E0002-1	Aluminum Carriage Bracket	3/8 x 3 x 8-1/2	1
17	XLIFT-F0006	Half Dog Pt. Set Screw (Anti-Backlash)	1/4-20 x 1	1
18	XLIFT-M0012	Rubber Washer	1/2 x 1-1/16 x .093	1
19	XLIFT-M0003	Brass Anti-Backlash Nut	1 x .450 x 1/2-20	1
20	XLIFT-M0004	Threaded Pulley (Delrin)	20 XL w/ 1/2-20	1
21	XLIFT-F0004	Socket Head Cap Screw	1/4-20 x 1	4
22	XLIFT-S0001-2	Carriage Mounting Block	1/2 x 1/2 x 3 Steel	2
23	XLIFT-E0002-2	Aluminum Carriage Gusset	3/8 x 2-1/2 x 3	2
24	XLIFT-P0002	Aluminum Carriage Plate	7.9 x 8-1/2 x 3/16	1
25	XLIFT-M0007	Bronze Thrust Washer	9/16 x 1-1/4 x 1/16 thk	1
26	XLIFT-M0042	Carriage Lead Screw		1
27	XLIFT-M0008	Bronze Flange Bearing	1/2 x 5/8 x 3/4 Lg	1
28	XLIFT-M0017-1	Phenolic Insert Ring	1-1/2 hole opening	1
29	XLIFT-M0016-1	Insert Wrench		1
30	XLIFT-M0018	Lift Handle (Arboron)		1
31	XLIFT-M0015	Hex Key	1/4	1
32	XLIFT-F0007	Socket Head Cap Screw	1/4-20 x 1-1/4	1
33	XLIFT-M0041-1	Phenolic Lift Handle Knob	1/4" Cored Hole	1
34	XLIFT-P0009	Master Ring		1
35	XLIFT-P0011	Master Ring Clamp		6
36	XLIFT-F0008	Oval Point Socket Set Screw	1/4-28 x 1/4	10
37	XLIFT-P0012	Starter Pin		1