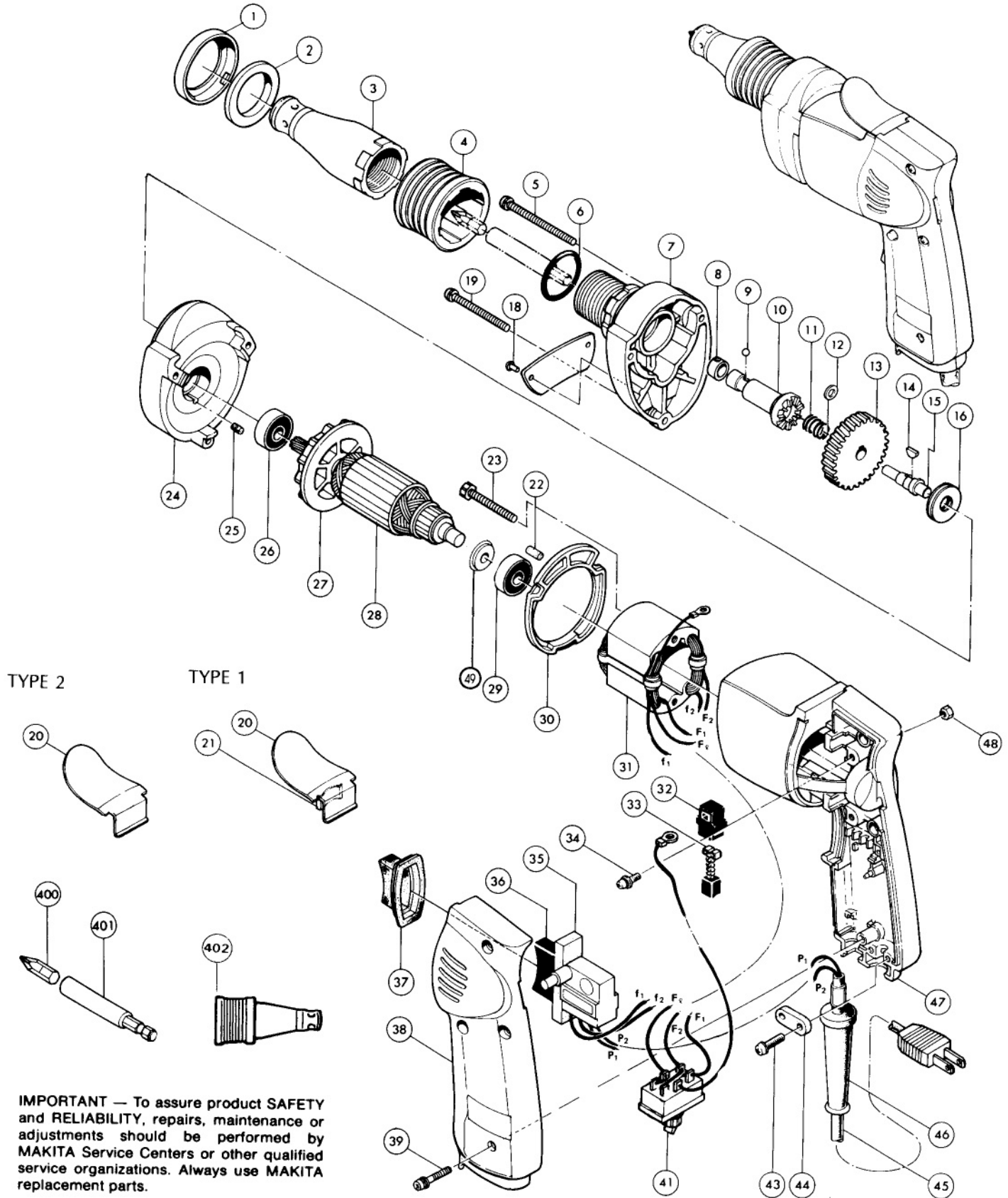




DRYWALL SCREWDRIVER

MODEL 6800DB
MODEL 6800DBV
MODEL 6801DB
MODEL 6801DBV



IMPORTANT — To assure product **SAFETY** and **RELIABILITY**, repairs, maintenance or adjustments should be performed by **MAKITA** Service Centers or other qualified service organizations. Always use **MAKITA** replacement parts.

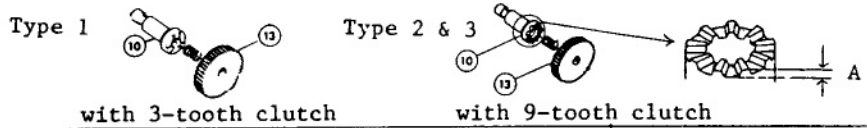
Fig.	Part No.	Qty. Used	Description	Fig.	Part No.	Qty. Used	Description
1	411297-0	1	FELT COVER	25	263002-9	1	RUBBER PIN 4
2	443028-9	1	FELT RING 30	26	211028-5	1	B.BEARING 627LB, (6800DB,6800DBV)
3	411292-0	1	LOCATOR		211033-2	1	B.BEARING 608LB, (608DB,6801DBV)
4	411293-8	1	LOCKING SLEEVE	27	241803-5	1	FAN
5	911181-4	2	SCREW M4X55	28	611282-5	1	ARMATURE (6800DB,6800DBV) INCLUDES FIG 26,27,28,29
6	213404-9	1	O RING 23		611302-5	1	ARMATURE (6801DB,6801DBV) INCLUDES FIG 26,27,28,29
7	***	1	GEAR HOUSING (6800DB,6800DBV)WITH NEEDLE BEARING 1416(212155-1) & O RING 14 (213154-6)	29	211028-5	1	BALL BEARING 627LB
	156353-6	1	GEAR HOUSING (6801DB,6801DBV)WITH NEEDLE BEARING 1416(212155-1)& O RING 14(213154-6)	30	****	1	BAFFLE PLATE
8	232050-9	1	LEAF SPRING	31	****	1	FIELD ASSEMBLY
9	216001-0	1	STEEL BALL 3.5	32	643552-4	2	BRUSH HOLDER
10	*	1	SPINDLE WITH NEEDLE BEARING 509(212015-7)	33	643056-6	2	CARBON BRUSH (CB-56)
11	231139-0	1	COMPRESSION SPRING 9	34	911124-6	2	P.H. SCREW M4X14 WITH WASHER 941051-3
12	253324-5	2	WASHER 8	36	651212-4	1	SWITCH (6800DB, 6801DB)
13	*	1	HELICAL GEAR		****	1	SWITCH (6800DBV, 6801BV)
14	254031-3	1	WOODRUFF KEY 3	37	**	1	DUST COVER
15	325485-2	1	GEAR SHAFT	38	**	1	HANDLE COVER
16	212057-1	1	THRUST NEEDLE BEARING 1023	39	911153-9	**	SCREW M4X28 WITH WASHER 941052-1
18	953106-2	2	RIVET	41	531003-8	1	REV. SWITCH (6800DB, 6801DB)
19	911173-3	1	SCREW MX45		****	1	REV. SWITCH (6800DBV, 6801DBV)
20	342422-1	1	CARRY CLIP (T1)	43	911133-5	2	P.H. SCREW M4X18
	343693-3	1	CARRY CLIP (T2)	44	687001-1	1	STRAIN RELIEF
21	232034-7	1	LEAF SPRING (T1)	45	664013-1	1	CORD WITH PLUG
22	263002-9	1	RUBBER PIN 4	46	682502-4	1	CORD GUARD
23	911180-6	2	BOLT M4X50 WITH WASHER 253926-7	47	**	1	MOTOR HOUSING
24	***	1	GEAR HSG COVER (6800DB,6800DBV)WITH PLANE BEARING 6 (214012-9)	48	931102-0	**	HEX NUT
	156354-4	1	GEAR HSG COVER (6901DB,6801DBV)WITH PLANE BEARING 6 (214012-9)	49	681617-4	1	INSULATION WASHER
				ACCESSORIES			
				400	784211-2	1	INSERT BIT #2 PHILLIPS
				401	784801-1	1	MAGNETIC BIT HOLDER
				402	122211-8	1	NOSE PIECE ASSEMBLY

2 MODEL 6800DB, 6800DBV
2 MODEL 6801DB, 6801DBV

- SEE SERVICE CHANGE 1
- ** SEE SERVICE CHANGE 2
- *** SEE SERVICE CHANGE 3
- **** SEE SERVICE CHANGE 4
- ***** SEE SERVICE CHANGE 5

SERVICE CHANGE

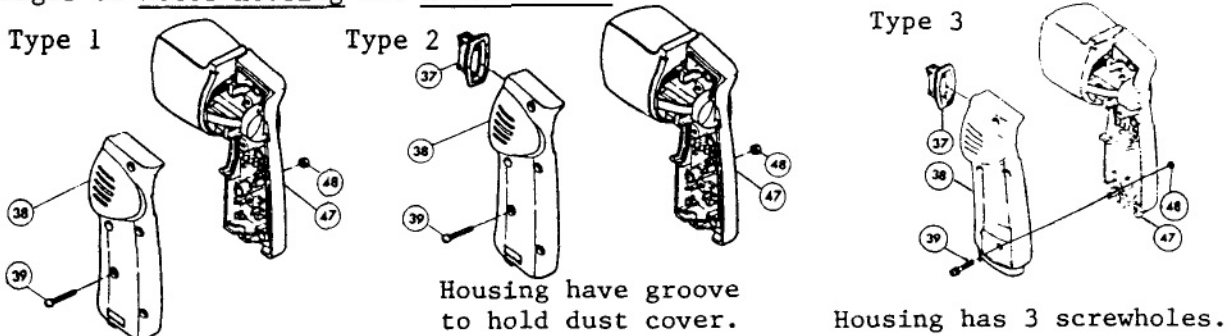
1. Changes on Clutch(spindle and gear).



Item No.	Description	with 3-tooth clutch		
		Type 1	Type 2	Type 3
10	Spindle	Part #152128-1 (Discontinued)	Part #152133-8(A= $\frac{1}{16}$ "-)	Part #152158-2(A= $\frac{3}{32}$ "-)
13	Gear (56 teeth) For Model 6800DB, 6800DBV	Part #221611-0 (Discontinued)	Part #221632-2(A= $\frac{1}{16}$ "-)	Part #221675-4(A= $\frac{3}{32}$ "-)
	Gear (37 teeth) For Model 6801DB, 6801DBV	Part #221615-2 (Discontinued)	Part #221633-0(A= $\frac{1}{16}$ "-)	Part #221674-6(A= $\frac{3}{32}$ "-)

The above parts are completely interchangeable as a set.

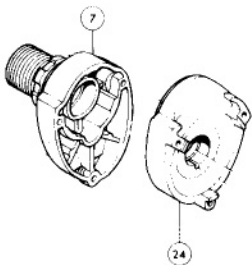
2. Changes on Motor Housing and Handle Cover.



Item No.	Description	Type 1	Type 2	Type 3
37	Dust Cover	-----	Part #421144-7 SEE SERVICE CHANGE 5	
38	Handle Cover	Part #411216-6 (Discontinued)	Part #155216-3 (Discontinued)	Part #155300-4
39	Screw	Part #911153-9(4ea.)	Part #911153-9(4ea.)	Part #911153-9(3ea.)
47	Motor Housing	Part #411215-8 (Discontinued)	Part #411411-8 (Discontinued)	Part #156491-4 SEE SERVICE CHANGE 4
48	Hex. Nut	Part #931102-0(4ea.)	Part #931102-0(4ea.)	Part #931102-0(3ea.)

The above parts are completely interchangeable as a set.

3. Changes on Gear Housing and Gear Housing Cover(models 6800DB, 6800DBV only).
 Changed from Die-Cast Aluminum to Plastic(poly-carbonate).



Item No.	Description	Type 1	Type 2
		Die-Cast Aluminum	Green Plastic (poly-carbonate)
7	Gear Housing	Part #156157-6	Part #156681-9
24	Gear Housing Cover	Part #156158-4	Part #156682-7

The above parts are completely interchangeable as a set.

SERVICE CHANGE

4. Change on Motor Housing from S/N 110,449E for 6800DB;S/N 416,723E for 6800DBV,S/N 139,570E for 6801DB;S/N 555,815E for 6801BV.

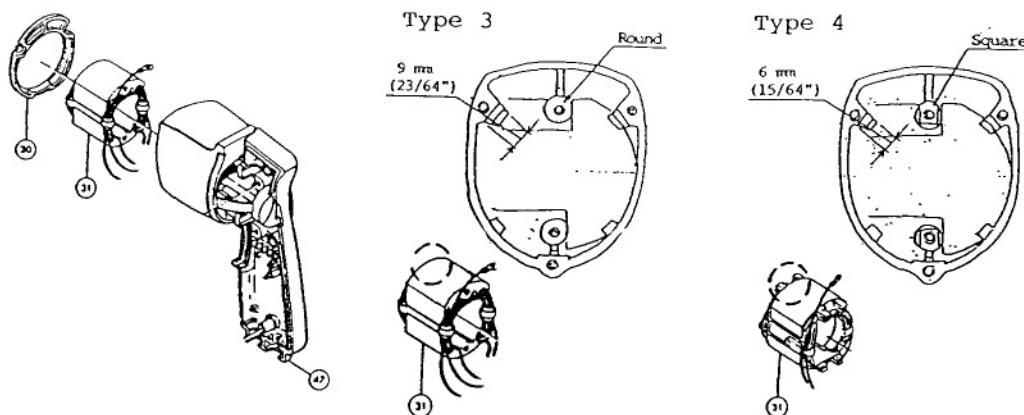


Fig.	Description	Type 3	Type 4
30	Baffle Plate	Part #411291-2	Part #414463-8
31	Filed	Part #621272-0	Part #639308-1
47	Motor Housing	Part #156491-4 (Discontinued)	Part #159061-8

The above parts are completely interchangeable as a set.

SERVICE CHANGE

5. Change on switch from 6800DBV - S/N 526, 299E, 6801DBV - S/N 652, 736E.

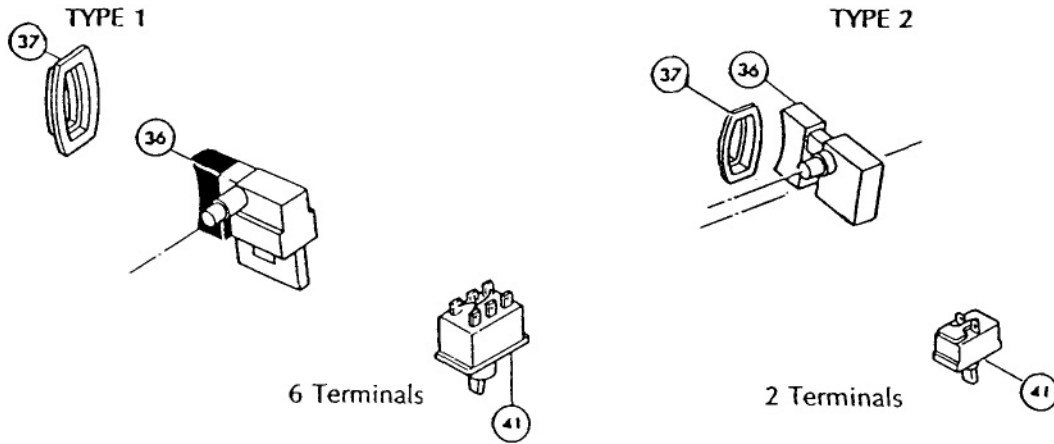
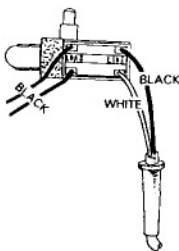


Fig.	Description	Type 1	Type 2
36	Switch	Part #651313-8 (Red Trigger)	Part #651271-8 (Black Trigger)
37	Dust Cover	Part #421144-7 (Covers Trigger)	Part #411852-8 (Does Not Cover Trigger)
41	Switch, Rev.	Part #531003-8	Part #651478-6

The above parts are completely interchangeable as a set.

Repair Note

Wiring for Type 1 SWITCH



Type 2 SWITCH

