

Parts

Ordering Replacement Parts

To order parts or reach our service department, call 1-800-274-6848 Monday through Friday (see our website for business hours, www.waltermeier.com). Having the Model Number and Serial Number of your machine available when you call will allow us to serve you quickly and accurately.

Parts List

Note: Parts without part numbers are for reference only and cannot be purchased individually.

Index No.	Part No.	Description	Size	Qty
1	JMS10CMS-1	Lower Handle		1
2	JMS10SCMS-10	Cord Clamp		1
3	JMS10CMS-3	Compression Spring		1
4	JMS10CMS-4	Spring Wire		1
5	JMS10CMS-5	Handle Segment		1
6	JMS10SCMS-19	Blade Wrench		1
7	JMS10CMS-7	Pan Head Tapping Screw	M4-18x16	2
8	JMS10SCMS-88	Terminal		2
9	JMS10CMS-9	Pan Head Tapping Screw	M6-1x25	2
10	JMS10SCMS-69	Pan Head Tapping Screw	M4-18x25	4
12	JMS10CMS-12	Limit Switch		1
13	JMS10CMS-13	Cord Guard		1
14	JMS10SCMS-170	Rocker Switch		1
15	JMS10CMS-15	Lead Wire		1
16	TS-1533062	Pan Head Screw	M5x20	1
17	JMS10CMS-17	Upper Handle		1
18	JMS10CMS-18	Trigger		1
19	JMS10CMS-19	Green Laser Controller Assembly		1
20	JMS10CMS-20	Pan Head Screw with Washer	M6x45	2
21	JMS10CMS-21	Motor		1
22	JMS10CMS-22	Motor Brush Cover		2
23	JMS10CMS-23	Motor Brush		2
24	TS-2342161	Nylon Insert Lock Nut	M16	1
25	TS-1541041	Nylon Insert Lock Nut	M10	1
26	TS-155010	Flat Washer	M16	2
27	TS-0680041	Flat Washer	3/8	1
28	JMS10CMS-28	Special Bolt		1
29	JMS10CMS-29	Pivot Shaft		1
30	TS-2171012	Pan Head Screw	M4x6	2
31	JMS10CMS-31	Pin		1
32	JMS10CMS-32	Table		1
33	JMS10CMS-33	Shaft		1
34	JMS10CMS-34	O-Ring		1
35	JMS10CMS-35	Pointer		1
36	JMS10SCMS-14	Knob		1
37	TS-2342121	Nylon Insert Lock Nut	M12	1
38	TS-0680061	Flat Washer	1/2	1
39	JMS10CMS-39	Pointer, Right		1
40	JMS10CMS-40	Disc		1
41	JMS10CMS-41	Pan Head Tapping Screw	M5-16x10	1
42	TS-2360121	Flat Washer	M12	1
43	JMS10SCMS-104	Bushing		1
44	TS-1502051	Socket Head Cap Screw	M5x20	1
45	JMS10CMS-45	Locking Rod		1
46	TS-1540041	Hex Nut	M6	2
47	TS-1541031	Nylon Insert Lock Nut	M8	1

Parts List

Index No.	Part No.	Description	Size	Qty
48	TS-1550061	Flat Washer	M8	1
49	TS-1533032	Pan Head Screw	M5x10	1
50	JMS10CMS-50	Pointer		1
51	JMS12SCMS-188	Handle		1
52	TS-1482041	Hex Cap Screw	M6x20	2
53	JMS10SCMS-33	Flat Washer	1/4x1/2x3/32	1
54	TS-2361061	Lock Washer	M6	1
55	TS-1503041	Socket Head Cap Screw	M6x16	1
56	JMS10CMS-56	Pin		1
57	JMS10CMS-57	Screw Stop		1
58	JMS10SCMS-8	Nut		1
59	JMS10SCMS-41	E-Clip	E-6	1
60	JMS10CMS-60	Miter Lock Handle Assembly		1
61		Miter Lock Handle		1
62		Link		1
63		Shaft		1
64		Spring Pin	Ø2.5x8	2
65	JMS10CMS-65	Compression Spring		1
66	TS-1541011	Nylon Insert Lock Nut	M5	1
67	JMS10CMS-67	Follower Plate		1
68	JMS10CMS-68	Hex Cap Screw with Flat & Lock Washers	M6x16	1
69	JMS10CMS-69	Compression Spring		1
70	TS-1523061	Socket Set Screw	M6x20	1
71	TS-1502081	Socket Head Cap Screw	M5x35	1
73	JMS10CMS-73	Table Insert		1
74	TS-2284082	Pan Head Screw	M4x8	4
75	JMS10CMS-75	Bevel Arm		1
76	JMS10CMS-76	Locking Handle Assembly		1
77	JMS10CMS-77	Release/Stop Lever		1
78	JMS10SCMS-37	Wave Washer	WW-8	2
79	TS-1533042	Pan Head Screw	M5x12	2
80	TS-1541011	Nylon Insert Lock Nut	M5	2
81	JMS10CMS-81	Extension Rod		2
82	JMS10CMS-82	Pan Head Screw	M5x6	2
83	JMS10CMS-83	Stop Plate, Left		1
84	JMS10CMS-84	Extension Wing, Left		1
85	JMS10CMS-85	Extension Rod		2
87	JMS10CMS-87	Fence Extension		1
88	JMS10CMS-88	Fence		1
89	JMS10SCMS-56	Socket Head Cap Screw with Washer	M8x25	1
90	JMS10CMS-90	Socket Head Cap Screw with Washer	M8x30	2
91	JMS10SCMS-17	Center Bolt		1
92	JMS10SCMS-95	Knob		2
93	JMS10CMS-93	Slide Plate		3
94	JMS12SCMS-118	Knob		2
95	JMS10CMS-95	Locking Handle Assembly		1
96		Cushion		1
97		Lock Handle		1
98		Pin	Ø5x16	1
99		Lock Screw		1
100		Plate		1
101		Flat Washer	M6	1
102		Nylon Insert Lock Nut	M6	1
103	JMS10CMS-103	Extension Wing, Right		1
104	JMS10CMS-104	Stop Plate, Right		1
105	JMS10CMS-105	Base		1

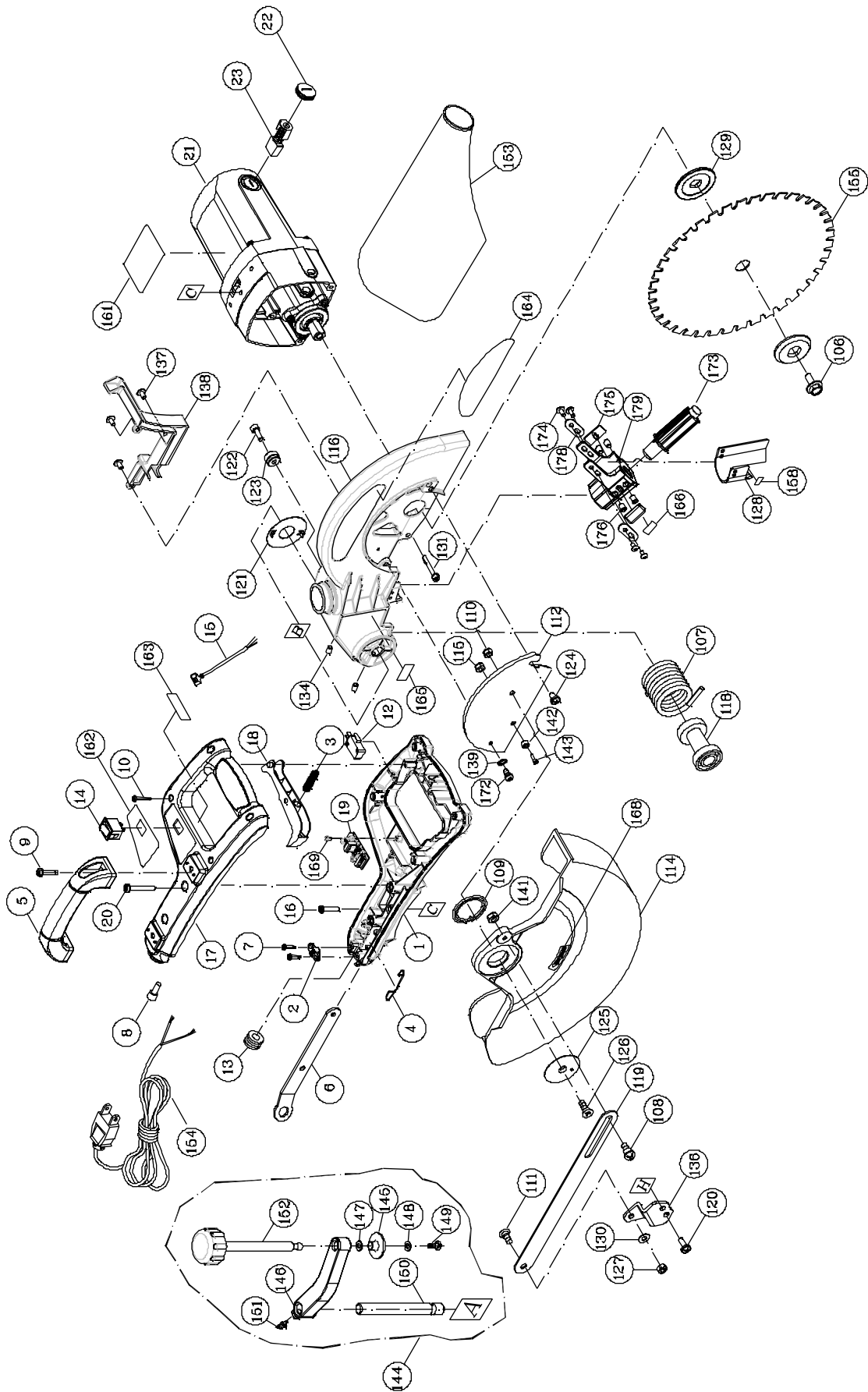
Parts List

Index No.	Part No.	Description	Size	Qty
106	JMS10SCMS-54	Arbor Bolt		1
107	JMS10CMS-107	Torsion Spring		1
108	JMS10SCMS-64	Truss Head Round Neck Screw	M6x14	1
109	JMS10SCMS-16	Guard Spring		1
110	TS-1541021	Nylon Insert Lock Nut	M6	1
111	JMS10SCMS-64	Truss Head Round Neck Screw	M6x14	1
112	JMS10CMS-112	Guard Plate		1
114	JMS10CMS-114	Blade Guard		1
115	TS-1541021	Nylon Insert Lock Nut	M6	1
116	JMS10CMS-116	Saw Arm		1
118	JMS10SCMS-1	Shaft Sleeve		1
119	JMS10CMS-119	Lever		1
120	TS-1503041	Socket Head Cap Screw	M6x16	2
121	JMS10CMS-121	Shim		1
122	TS-1503041	Socket Head Cap Screw	M6x16	1
123	JMS10CMS-123	Anchor Block		1
124	JMS10CMS-124	Truss Head Screw	M6x8	1
125	JMS10SCMS-15	Collar		1
126	TS-1534051	Flat Head Screw	M6x16	1
127	TS-1541021	Nylon Insert Lock Nut	M6	1
128	JMS10CMS-128	Rubber Sleeve		1
129	JMS10CMS-129	Arbor Collar		2
130	TS-1550041	Flat Washer	M6	1
131	JMS10CMS-131	SHCS with Plastic Lock Washer	M5x35	3
134	TS-1523031	Socket Set Screw	M6x10	2
136	JMS10CMS-136	Link Bracket		1
137	JMS10CMS-132	Truss Head Screw	M4x8	3
138	JMS10CMS-138	Cable Shield		1
139	JMS10SCMS-37	Wave Washer	WW-8	1
141	TS-1541021	Nylon Insert Lock Nut	M6	1
142	JMS10CMS-142	Anchor Block		1
143	TS-1503031	Socket Head Cap Screw	M6x12	1
144	JMS10CMS-144	Clamp Hold Down Assembly		1
145		Flange Pad		1
146		Clamp Hold Down Arm		1
147		Flat Washer	M10	1
148		Flat Washer	3/16	1
149		Pan Head Screw with Lock Washer	M5x10	1
150		Support Post		1
151		Lock Knob		1
152		Clamp Spindle & Knob Assembly		1
153	JMS10SCMS-90	Dust Bag		1
154	JMS10CMS-154	Power Cord		1
155	JMS10SCMS-192	Saw Blade	10"x40Tx5/8" Arbor	1
156	JMS10SCMS-11	Warning Label		1
157	JMS10CMS-157	Label: Miter Quick Lock		1
158	JMS10SCMS-103	Warning Label: Avoid Exposure		1
159	JMS10CMS-159	Bevel Angle Scale		1
160	JMS10CMS-160	Miter Angle Scale		1
161	JMS10CMS-161	ID Label		1
162	JMS10CMS-162	Label: Laser On/Off		1
163	JMS10CMS-163	JET Label for Handle		1
164	JMS10SCMS-202	JET Label		1
165	JMS10SCMS-198	Label: Laser Caution		1
166	JMS10SCMS-172	Label: Do Not Remove		1

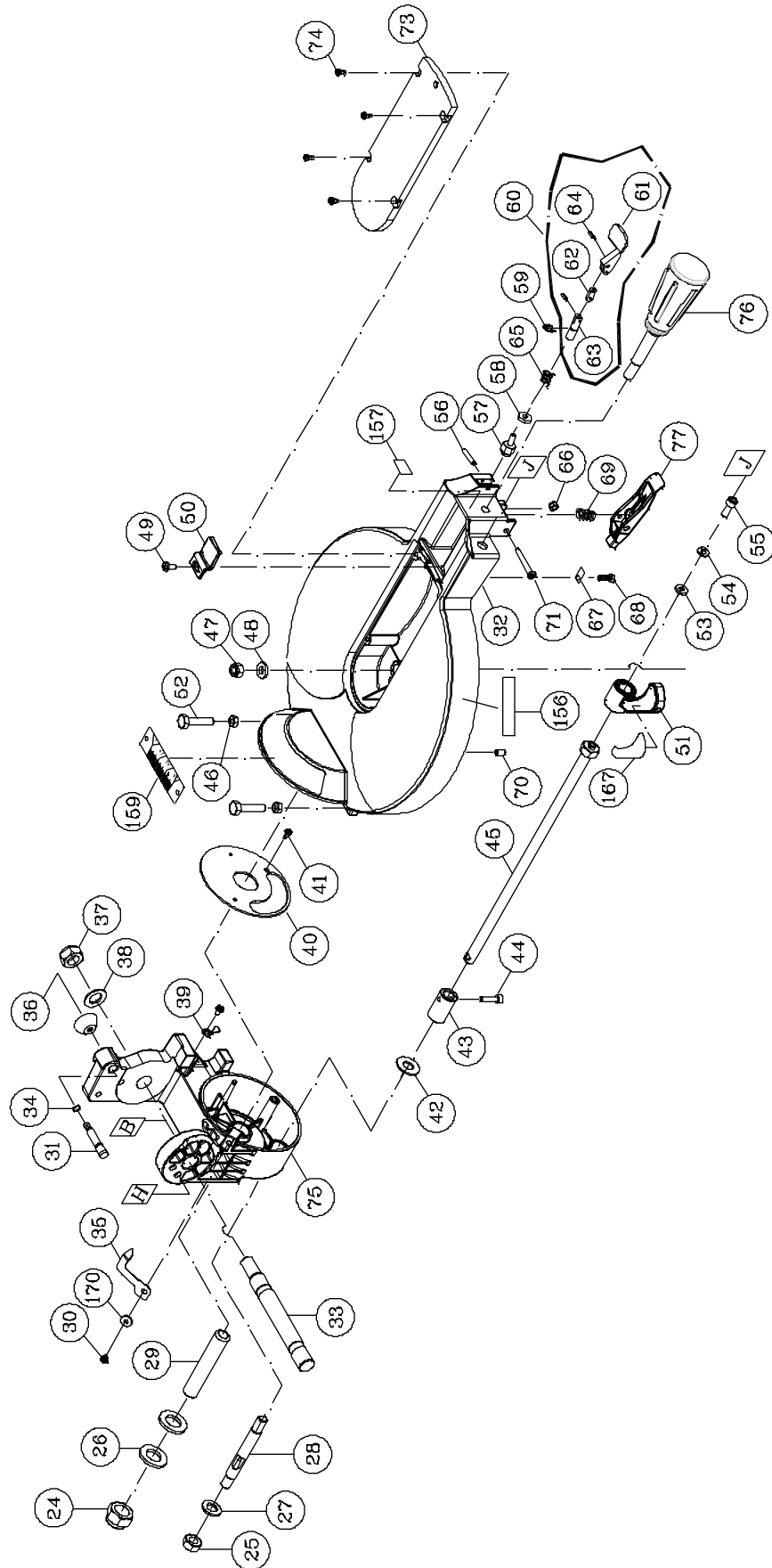
Parts List

Index No.	Part No.	Description	Size	Qty
167	JMS10CMS-167	Label: Bevel Lock		1
168	JMS10SCMS-93	Label: Rotation		1
169	JMS10CMS-169	Cross Recessed Truss Head Tapping Screw	M3-24x8	1
170	TS-1550021	Flat Washer	M4	1
171	TS-1533042	Cross Recessed Pan Head Screw	M5x12	4
172	JMS10CMS-172	Cross Rec. Pan Head Round Neck Screw	M6x9	1
173	JMS10CMS-173	Laser Assembly		1
174	JMS10CMS-174	Cross Recessed Truss Head Screw	M4x10	4
175	JMS10CMS-175	Cover		2
176	JMS10CMS-176	Slotted Set Screw	M6x8	4
177	JMS10CMS-177	Flat Washer	M5x14-T1	4
178	JMS10CMS-178	Bracing Plate		2
179	JMS10CMS-179	Laser Plunger Housing		1

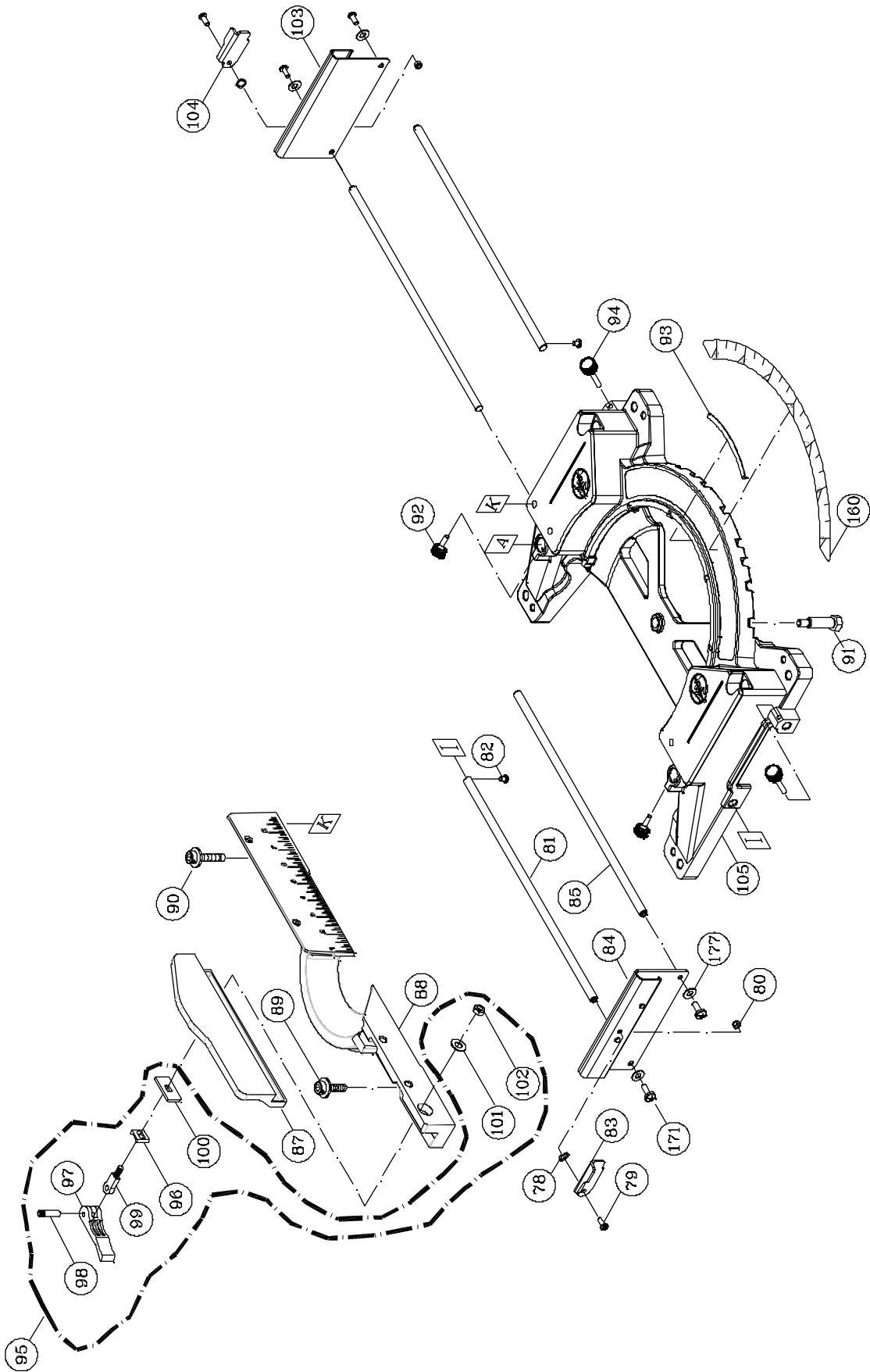
Assembly Drawing



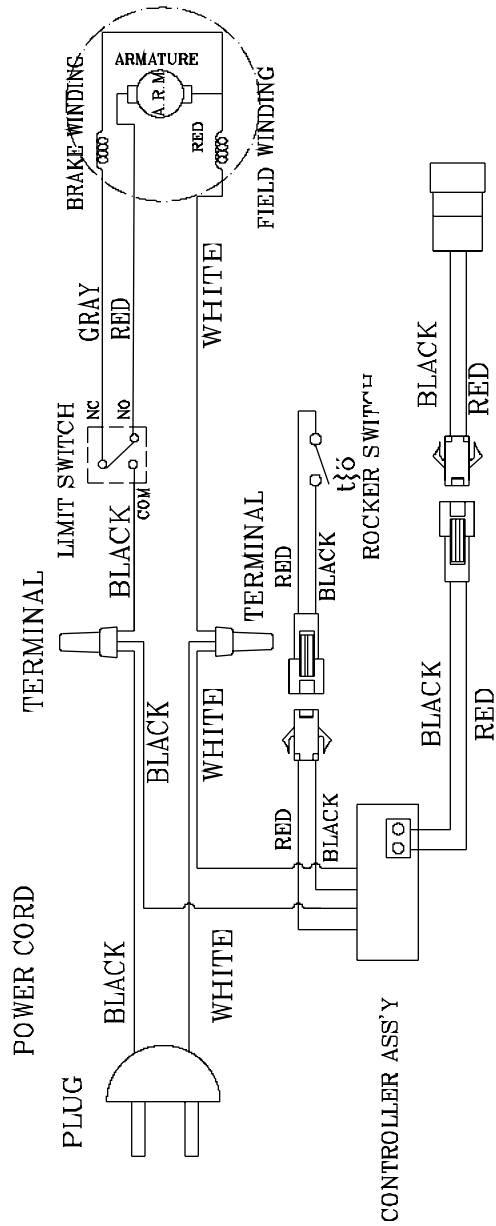
Assembly Drawing (continued)



Assembly Drawing (continued)



Wiring Diagram



GREEN LASER ASS'Y

