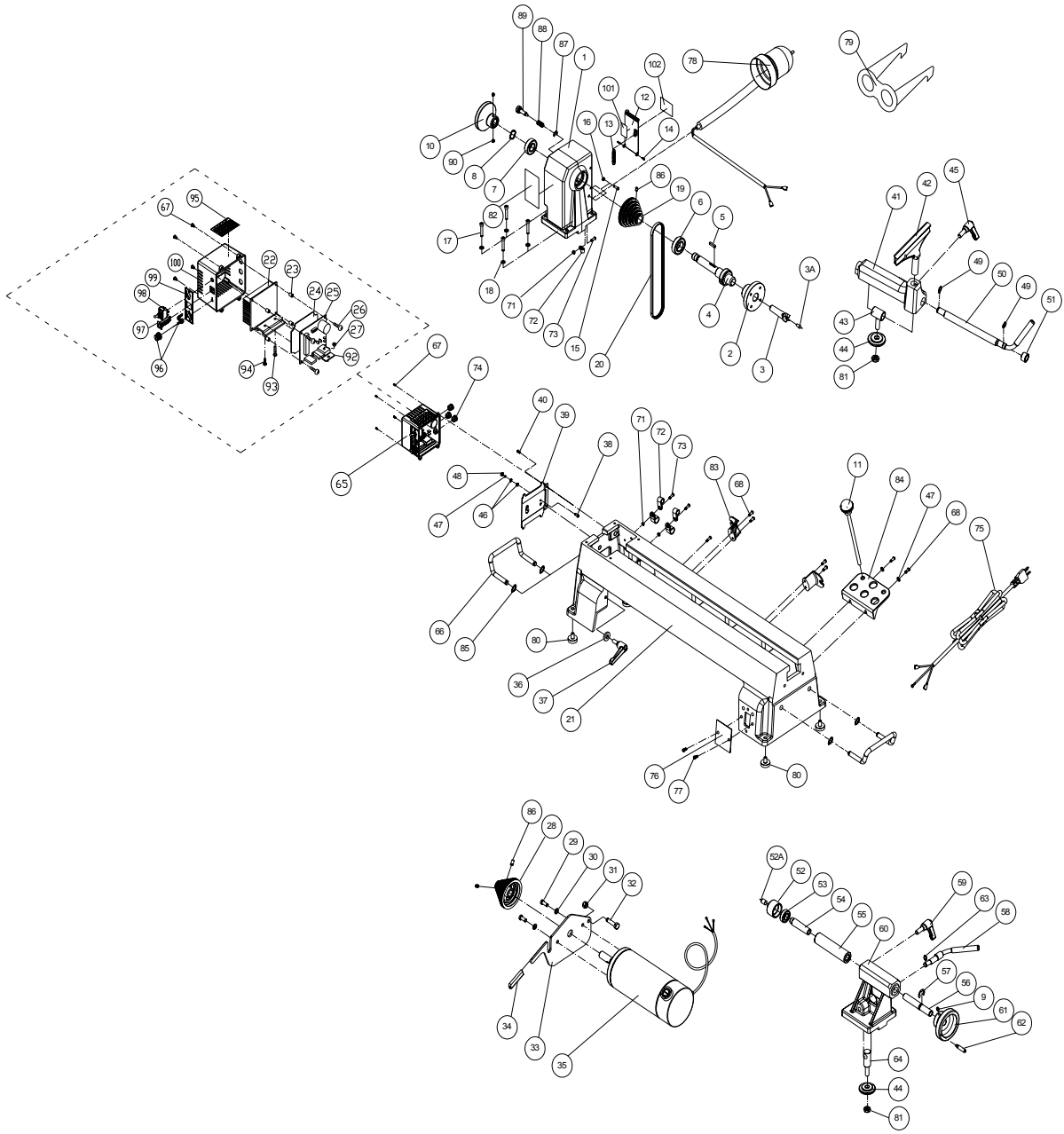


Parts Breakdown for (JWL-1220VS Lathe)



Parts List for JWL-1220VS Lathe

| Index No. | Part No. | Description | Size | Qty |
|-----------|-----------------|--|------------------|-----|
| 1 | JWL1220-101 | Headstock | | 1 |
| 2 | JML-2 | Faceplate | 3" | 1 |
| 3 | JML-3 | Spur Center | MT2 | 1 |
| 3A | JML-3A | Center Point for Spur Center | | 1 |
| 4 | JML-4 | Spindle | 1" x 8 TPI | 1 |
| 5 | JML-5 | Key | 5x25mm | 1 |
| 6 | BB-6005VV | Ball Bearing | 6005VV | 1 |
| 7 | BB-6004VV | Ball Bearing | 6004VV | 1 |
| 8 | JML-8 | Wave Washer | | 1 |
| 9 | TS-0267041 | Socket Set Screw | 1/4"-20x3/8" | 2 |
| 10 | JML1014-110 | Hand Wheel | | 1 |
| 11 | JML-11 | Drift Rod | | 1 |
| 12 | JML-12W | Spindle Pulley Door | | 1 |
| 13 | JML-13 | Spring | | 1 |
| 14 | JML-14 | Roll Pin | Ø3 x 10mm | 2 |
| 15 | TS-081C042 | Pan Head Screw | #10-24x5/8" | 1 |
| 16 | TS-0560071 | Hex Nut | #10-24 | 1 |
| 17 | TS-0207071 | Socket Head Cap Screw | 1/4"-20x1-1/4" | 4 |
| 18 | TS-0720071 | Lock Washer | 1/4" | 4 |
| 19 | JML1014-119 | Spindle Pulley | | 1 |
| 20 | JWL1220-120 | V-Belt | 260J | 1 |
| 21 | JWL1220VS-121 | Bed | | 1 |
| 22 | JWL1220VS-122 | Heat Sink | | 1 |
| 23 | JWL1220VS-123 | Spacer | | 4 |
| 24 | JWL1220VS-124 | Insulator | | 1 |
| 25 | JWL1220VS-125 | Circuit Board | | 1 |
| 26 | JMLVS-101 | Tapping Screw | | 4 |
| 27 | TS-1540021 | Hex Nut | M4 | 1 |
| 28 | JML-28 | Motor Pulley | | 1 |
| 29 | TS-0050021 | Hex Cap Screw | 1/4"-20x5/8" | 2 |
| 30 | TS-0720071 | Lock Washer | 1/4" | 2 |
| 31 | TS-0640081 | Nylon Insert Lock Nut | 5/16"-18 | 1 |
| 32 | TS-0051061 | Hex Cap Screw | 5/16"-18x1-1/4" | 1 |
| 33 | JWL1220-133 | Motor Bracket | | 1 |
| 34 | JWL1220-134 | White Handle Protector | | 1 |
| 35 | JWL1220VS-135 | Motor | 3/4HP, 1Ph, 115V | 1 |
| | JWL1220VS-135MB | Motor Carbon Brush | | 2 |
| 36 | TS-0680031 | Flat Washer | 5/16" | 1 |
| 37 | JML-37A | Lock Handle Assembly, Motor Plate | | 1 |
| 38 | TS-1533032 | Pan Head Screw | M5x10 | 1 |
| 39 | JWL1220VS-139 | Hinge Plate | | 1 |
| 40 | JWL1220VS-140 | Screw | M5x6 | 2 |
| | JWL1220-TRBA | Tool Rest Body Assembly (Index # 41, 43-45, 49-51, 81) | | 1 |
| 41 | JWL1220-141 | Tool Rest Body | | 1 |
| 42 | JWL1220-142 | Tool Rest | 6" | 1 |
| | JWL1220-142A | Tool Rest | 10" | 1 |
| 43 | JML-43 | Bolt | | 1 |
| 44 | JML-44 | Clamp | | 2 |
| 45 | JML-45A | Lock Handle Assembly, Tool Rest Body | | 1 |
| 46 | JWL1220VS-146 | Star Washer | M5 | 2 |
| 47 | TS-1550031 | Flat Washer | M5 | 3 |
| 48 | TS-1540031 | Hex Nut | M5 | 1 |
| 49 | JML-49 | C-Ring | STW-12 | 2 |
| 50 | JWL1220-150 | Eccentric Locking Rod | | 1 |
| 51 | JML-51 | Bushing | | 1 |

| | | | | |
|-----|----------------|---|--------------|---|
| 52 | JML-52 | Live Center Head | | 1 |
| 52A | JML-52A | Center Point for Live Center | | 1 |
| 53 | BB-6002ZZ | Ball Bearing | 6002ZZ | 1 |
| 54 | JML-54 | Live Center Shaft | | 1 |
| | 708331 | Live Center Assembly (not shown) | | 1 |
| 55 | JML-55 | Tailstock Spindle | | 1 |
| 56 | JML-56 | Leadscrew | | 1 |
| 57 | JML-57 | E-Ring | ETW-12 | 1 |
| 58 | JML-58 | Eccentric Locking Rod | | 1 |
| 59 | JML-59A | Lock Handle Assembly, Tailstock | | 1 |
| 60 | JWL1220-160 | Tailstock | | 1 |
| 61 | JML-61 | Hand Wheel | | 1 |
| 62 | JML-62 | Handle | | 1 |
| 63 | JML-63 | C-Ring | STW-10 | 1 |
| 64 | JML-64 | Bolt | | 1 |
| 65 | JWL1220VS-165 | Controller Assembly (Index # 22-27, 92-100) | | 1 |
| 66 | JWL1220-193 | Lift Handle | | 2 |
| 67 | JWL1220VS-167 | Screw | M5x8 | 4 |
| 68 | TS-081C032 | Pan Head Screw | #10-24x1/2" | 6 |
| 71 | TS-1540021 | Hex Nut | M4 | 4 |
| 72 | JWL1220-172 | Cord Clamp | | 4 |
| 73 | TS-1532052 | Pan Head Screw | M4x16 | 4 |
| 74 | JWL1220VS-174 | Strain Relief | SB6R-3 | 3 |
| 75 | JWL1220VS-175 | Power Cord | | 1 |
| 76 | JWL1220VS-176 | Cover Plate | | 1 |
| 77 | TS-0810012 | Pan Head Screw | #10-24x1/4" | 2 |
| 78 | JWL1220-198 | Work Lamp | | 1 |
| 79 | JML-79 | Safety Goggles | | 1 |
| 80 | JML-80 | Rubber Foot | | 4 |
| 81 | JML-81 | Clamp Nut | | 2 |
| 82 | JML-82 | Warning Label | | 1 |
| 83 | JWL1220-197 | Cord Wrap Bracket | | 2 |
| 84 | JWL1220-195 | Tool Shelf | | 1 |
| 85 | JWL1220-194 | C-Ring | STW-10 | 4 |
| 86 | TS-1523031 | Socket Set Screw | M6x10 | 3 |
| 87 | JML1014-187 | C-Ring | STW-9 | 1 |
| 88 | JML1014-188 | Spring | | 1 |
| 89 | JML1014-189 | Index Pin | | 1 |
| 90 | TS-0267021 | Socket Set Screw | 1/4"-20x1/4" | 2 |
| 92 | JWL1220VS-192 | Clamp Bracket | | 1 |
| 93 | TS-2284202 | Pan Head Screw | M4x20 | 1 |
| 94 | TS-1532042 | Pan Head Screw | M4x12 | 1 |
| 95 | JWL1220VS-195 | Speed Label | | 1 |
| 96 | JWL1220VS-196 | Control Potentiometer Assembly | | 1 |
| 97 | JWL1220VS-197 | Circuit Breaker | | 1 |
| 98 | JWL1220VS-198 | On/Off Switch | | 1 |
| 99 | JWL1220VS-199 | Control Panel Label | | 1 |
| 100 | JWL1220VS-1100 | Control Box Cover | | 1 |
| 101 | JWL1220VS-1101 | Speed Chart | | 1 |
| 102 | JWL1220VS-1102 | I.D.Label | | 1 |

Electrical Connection for (JWL-1220VS) Lathe

