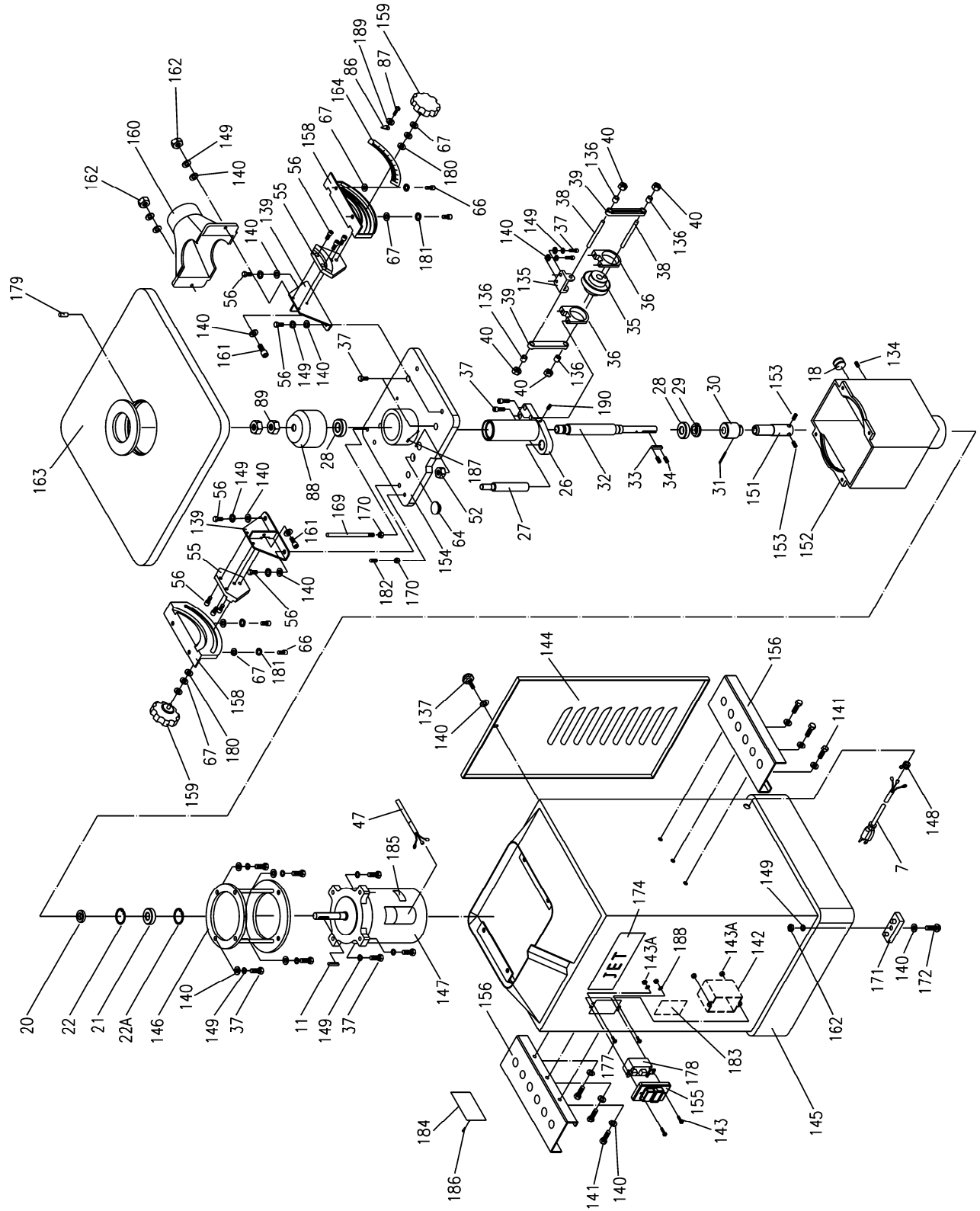


Breakdown for the JOVS-10 Oscillating Spindle Sander

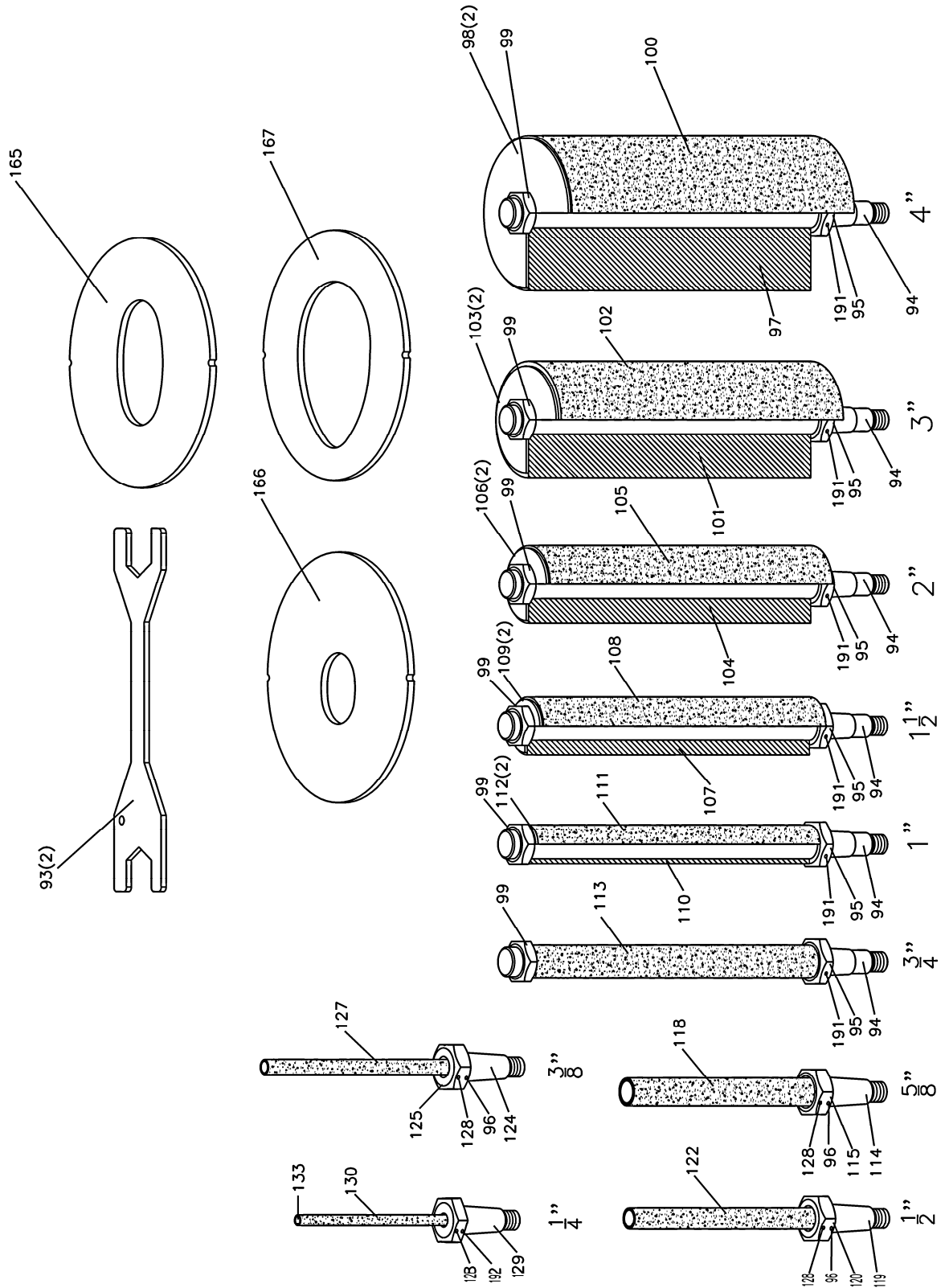


Parts List for the JOVS-10 Oscillating Spindle Sander

Index No.	Part No.	Description	Size	Qty
7	OVS10-007	Power Cord		1
11	KEY5525	Key		1
18	OVS10-18	Oil Indicator		1
20	OS-30628	Oil Seal		1
21	BB-6206ZZ	Ball Bearing	6206ZZ	1
22	OVS10-022	C-Ring	RA63	1
22A	OVS10-022A	C-Ring	RA62	1
26	OVS10-026	Sleeve		1
27	OVS10-027	Guide Rail Shaft		1
28	BB-6205ZZ	Ball Bearing	6205LU	2
29	OVS10-029	Locking Nut		1
30	OVS10-030	Worm		1
31	OVS10-031	Spring Pin	5x30 mm	1
32	OVS10-032	Main Shaft		1
33	KEY5550	Key	5x5x50 mm	1
34	OVS10-034	Set Screw	M3x12	2
35	OVS10-035	Spur Gear		1
36	OVS10-036	Brass Bushing		2
37	TS-0208061	Socket Head Cap Screw	5/16"-18x1"	16
38	OVS10-038	Transmission Rod Shaft		2
39	OVS10-039	Transmission Rod		2
40	TS-0640091	Hex Nut, Nylon Lock	3/8"-16	4
47	OVS10-047	Switch Cord		1
52	OVS10-052	Locking Nut	5/8"-11	1
55	OVS10-055	Rear Trunnion Bracket		2
56	TS-0208082	Socket Head Cap Screw	5/16"-24x1-1/2"	10
64	OVS10-064	Oil Lid		1
66	OVS10-066	Hex Socket Cap Screw	3/8"-16x3/4"	4
67	TS-0680042	Flat Washer	3/8"	8
86	OVS10-086	Angle Pointer		1
87	OVS10-087	Pan Head Machine Screw	10-24x1/4"	1
88	OVS10-088	Cap		1
89	OVS10-089	Nut	15/16"-24 R.H.	2
134	JOVS10-134	Oil Plug	PT1/4"	1
135	JOVS10-135	Brass Bushing Bracket		1
136	JOVS10-136	Shaft Brass Bushing		4
137	JOVS10-137	Knob	5/16"-18x3/4"	1
139	JOVS10-139W	Bracket Base		2
140	TS-0680032	Flat Washer	5/16"	24
141	TS-0051021	Cap Screw	5/16"-18x5/8"	6
142	JOVS10-142	Switch Box		1
143	JOVS10-143	Pan Head Machine Screw	3/16"-24x1-1/2"	2
143A	JOVS10-143A	Hex Nut	3/16"-24	2
144	JOVS10-144W	Vent Cover		1
145	JOVS10-145W	Base		1
146	JOVS10-146	Motor Bracket		1
147	JOVS10-147	Motor		1
	JOVS10-147MF	Motor Fan (not shown)		1
	JOVS10-147MFC	Motor Fan Cover (not shown)		1
	JOVS10-147CC	Capacitor Cover (not shown)		1
	JOVS10-147RC	Running Capacitor (not shown)	45uf, 250V	1
	JOVS10-147SC	Starting Capacitor (not shown)	300MFD, 125VAC	1
148	JOVS10-148	Strain Relief Bushing		1
149	TS-0720081	Lock Washer	5/16"	20
151	JOVS10-151	Coupling Head		1
152	JOVS10-152	Tank		1
153	TS-0267041	Set Screw	1/4"-20x3/8"	2

Index No.	Part No.	Description	Size	Qty
154	JOVS10-154	Tank Lid		1
155	JOVS10-155	Switch Push Button		1
156	JOVS10-156W	Sanding Assembly Rack		2
158	JOVS10-158W	Rear Trunnion		2
159	JOVS10-159	Locking Knob	3/8"-16x3/4"	2
160	JOVS10-160W	Dust Cover		1
161	TS-0051061	Hex Bolt	5/16"-18x1-1/4"	2
162	TS-0561021	Hex Nut	5/16"-18	6
163	JOVS10-163W	Working Table		1
164	JOVS10-164	Scale		1
169	JOVS10-169	Fixed Rod		1
170	TS-0561031	Hex Nut	3/8"-16	2
171	JOVS10-171	Rubber Feet		4
172	JOVS10-172	Sinking Head Screw	5/16"-18x3/4"	4
174	JOVS10-174	JET Logo		1
177	JOVS10-177	Pan Head Screw	3/16"-24x3/8"	2
178	JOVS10-178	Switch		1
179	JOVS10-179	Spring Pin	3x22 mm	1
180	JOVS10-180	Fiber Washer	3/8"	2
181	TS-0720091	Lock Washer	3/8"	4
182	TS-0271071	Set Screw	3/8"-16x3/4"	1
183	JOVS10-183	Warning Label		1
184	JOVS10-184	I.D Label		1
185	JOVS10-185	Motor Label		1
186	JOVS10-186	Rivet		4
187	TS-0267041	Set Screw	1/4"-20x3/8"	1
188	JOVS10-188	Star Washer	3/16"	2
189	TS-0680011	Flat Washer	3/16"	1
190	TS-0267021	Set Screw	1/4"-20x1/4"	4

Sanding Assemblies



Parts List for Sanding Assemblies

Index No.	Part No.	Description	Size	Qty
93	OVS10-093	Wrench		2
94	OVS10-094A	Arbor	3/4"	6
95	OVS10-095	Hex Nut		6
96	OVS10-096	Spring Pin	3.5x25 mm	3
97	30105000J	Spindle Assembly	4"	1
98	OVS10-098	Washer	4"	2
99	OVS10-099	Nut	3/4"-16"	6
100	575951	Sanding Sleeve (60 Grit) – 4 pack	4" x 9"	
	575953	Sanding Sleeve (100 Grit) – 4 pack	4" x 9"	
	575954	Sanding Sleeve (150 Grit) – 4 pack	4" x 9"	
101	30105000I	Spindle Assembly	3"	1
102	575946	Sanding Sleeve (60 Grit) – 4 pack	3" x 9"	
	575948	Sanding Sleeve (100 Grit) – 4 pack	3" x 9"	
	575949	Sanding Sleeve (150 Grit) – 4 pack	3" x 9"	
103	OVS10-103	Washer	3"	2
104	30105000H	Spindle Assembly	2"	1
105	575936	Sanding Sleeve (60 Grit) – 4 pack	2" x 9"	
	575938	Sanding Sleeve (100 Grit) – 4 pack	2" x 9"	
	575939	Sanding Sleeve (150 Grit) – 4 pack	2" x 9"	
106	OVS10-106	Washer	2"	2
107	30105000G	Spindle Assembly	1-1/2"	1
108	575926	Sanding Sleeve (60 Grit) – 4 pack	1-1/2" x 9"	
	575928	Sanding Sleeve (100 Grit) – 4 pack	1-1/2" x 9"	
	575929	Sanding Sleeve (150 Grit) – 4 pack	1-1/2" x 9"	
109	OVS10-109	Washer	1-1/2"	2
110	30105000F	Spindle Assembly	1"	1
111	575916	Sanding Sleeve (60 Grit) – 4 pack	1" x 9"	
	575918	Sanding Sleeve (100 Grit) – 4 pack	1" x 9"	
	575919	Sanding Sleeve (150 Grit) – 4 pack	1" x 9"	
112	OVS10-112	Washer	1"	2
113	575911	Sanding Sleeve (60 Grit) – 4 pack	3/4" x 9"	
	575913	Sanding Sleeve (100 Grit) – 4 pack	3/4" x 9"	
	575914	Sanding Sleeve (150 Grit) – 4 pack	3/4" x 9"	
114	OVS10-114A	Arbor	5/8"	1
115	OVS10-115	Hex Nut	5/8"	1
118	575906	Sanding Sleeve (60 Grit) – 4 pack	5/8" x 6"	
	575908	Sanding Sleeve (100 Grit) – 4 pack	5/8" x 6"	
	575909	Sanding Sleeve (150 Grit) – 4 pack	5/8" x 6"	
119	OVS10-119A	Arbor	1/2"	1
120	OVS10-120	Hex Nut	1/2"	1
122	575901	Sanding Sleeve (60 Grit) – 4 pack	1/2" x 6"	
	575903	Sanding Sleeve (100 Grit) – 4 pack	1/2" x 6"	
	575904	Sanding Sleeve (150 Grit) – 4 pack	1/2" x 6"	
124	OVS10-124A	Arbor	3/8"	1
125	OVS10-125	Hex Nut	3/8"	1
127	575896	Sanding Sleeve (60 Grit) – 4 pack	3/8" x 6"	
	575898	Sanding Sleeve (100 Grit) – 4 pack	3/8" x 6"	
	575899	Sanding Sleeve (150 Grit) – 4 pack	3/8" x 6"	
128	OVS10-117	Set Screw	3/16"-24x1/4"	4
129	OVS10-129	Arbor		1
130	575891	Sanding Sleeve (60 Grit) – 4 pack	1/4" x 6"	
	575893	Sanding Sleeve (100 Grit) – 4 pack	1/4" x 6"	
	575894	Sanding Sleeve (150 Grit) – 4 pack	1/4" x 6"	
133	OVS10-133A	Spindle		1
165	JOVS10-165	Table Insert (Medium)		1
166	JOVS10-166	Table Insert (Small)		1
167	JOVS10-167	Table Insert (Large)		1
191	JOVS10-191	Spring Pin	5x25 mm	6
192	JOVS10-192	Spring Pin	3x25 mm	1

Electrical Connections

