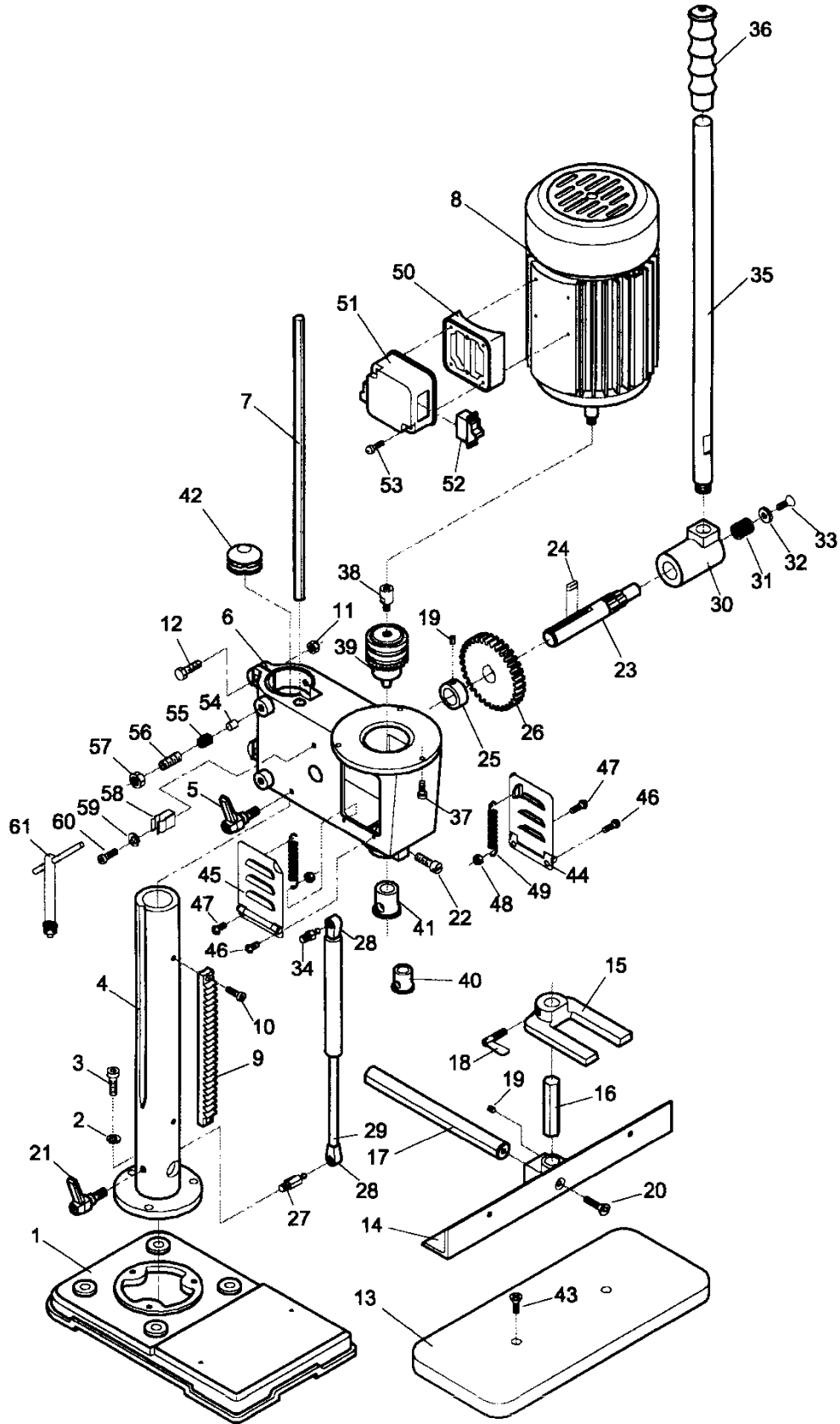


JBM-5 Benchtop Mortiser



Parts List for JBM-5 Benchtop Mortiser

To order parts or reach our service department, call 1-800-274-6848, Monday through Friday (see our website for business hours, www.waltermeier.com). Having the Model Number and Serial Number of your machine available when you call will allow us to serve you quickly and accurately.

| Index No. | Part No. | Description | Size | Qty |
|-----------|-------------|---|--------------|-----|
| 1 | 23011045W | Base | | 1 |
| 2 | 50302003 | Lock Washer | 5/16" | 3 |
| 3 | 50102018 | Hex Socket Cap Screw | M8x1.25x20 | 3 |
| 4 | 23011002W | Column | | 1 |
| 5 | 23011053 | Lock Handle | M8x1.25x10 | 1 |
| 6 | 23011046W | Head | | 1 |
| 7 | 23011004 | Depth Stop | | 1 |
| 8 | 23011054 | Motor | | 1 |
| | 23011054-01 | Fan (not shown) | | 1 |
| | 23011054-02 | Fan Cover (not shown) | | 1 |
| | 50154019 | Fan Cover Screw (not shown) | | 1 |
| | 23011054-03 | Capacitor | 25uF, 250VAC | 1 |
| 9 | 23011005 | Rack | | 1 |
| 10 | 50102032 | Hex Socket Cap Screw | M6x1.0x16 | 2 |
| 11 | 50201017 | Nut | M8x1.25 | 2 |
| 12 | 50102021 | Hex Cap Bolt | M8x1.25x30 | 2 |
| 13 | 23011055 | Table | | 1 |
| | 23011056AW | Fence Assembly (includes #14,16,17,19,20) | | 1 |
| 14 | 23011056W | Fence | | 1 |
| 15 | 23011057 | Hold Down | | 1 |
| 16 | 23011058 | Hold Down Post | | 1 |
| 17 | 23011059 | Fence Rod | | 1 |
| 18 | 50109001 | Wing Screw | M8x1.25 | 1 |
| 19 | TS-1523011 | Set Screw | M6x1x6 | 2 |
| 20 | 50110005 | Flat Head Screw | M6x1x22 | 1 |
| 21 | 23011009 | Lock Handle | M8x1.25x30 | 1 |
| 22 | 23011010 | Brass Screw | M8x1.25x25 | 1 |
| 23 | 23011061 | Pinion Shaft | | 1 |
| 24 | 50605005 | Key | 5x5x14 mm | 1 |
| 25 | 23011012 | Collar | | 1 |
| 26 | 23011013 | Gear | | 1 |
| 27 | 23011014 | Lower Cylinder Fitting | | 1 |
| 28 | 23011030 | Cylinder Head (re:23011031A) | | 1 |
| 29 | 23011031 | Hydraulic Cylinder | | 1 |
| | 23011031A | Hydraulic Cylinder Assembly (includes #28,29) | | 1 |
| 30 | 23011062 | Clutch Block | | 1 |
| 31 | 23011063 | Spring | | 1 |
| 32 | 23011064 | Washer | | 1 |
| 33 | 50110006 | Flat Head Screw | M6x1x11 | 1 |
| 34 | 23011017 | Upper Cylinder Fitting | | 1 |
| 35 | 23011065 | Handle Rod | | 1 |
| 36 | 23011019 | Handle Grip | | 1 |
| 37 | 50102042 | Hex Socket Cap Screw | M5x0.8x16 | 3 |
| 38 | 23011020 | Adapter | | 1 |
| 39 | 23011032 | Chuck | | 1 |
| 40 | 23011033 | Bushing | 5/8" | 1 |
| 41 | 23011034 | Bushing | 3/4" | 1 |
| 42 | 23011021 | Cap | | 1 |
| 43 | 50105006 | Flat Head Screw | M6x1x20 | 2 |
| 44 | 23011066W | Right Side Cover Assembly | | 1 |
| 45 | 23011067W | Left Side Cover Assembly | | 1 |
| 46 | 50104010 | Screw | M5x0.8x8 | 2 |
| 47 | 50104011 | Screw | M5x0.8x12 | 2 |
| 48 | 50202006 | Nut | M5x0.8 | 2 |

| | | | |
|----|----------|-------------------------|--------------|
| 49 | 23011068 | Spring | 2 |
| 50 | 23011050 | Switch Base | 1 |
| 51 | 23011051 | Switch Cover | 1 |
| 52 | 23011029 | Toggle Switch | 1 |
| 53 | 50111002 | Tap Screw | M10x2 2 |
| 54 | 23011026 | Brass Pin | 2 |
| 55 | 23011027 | Spring | 2 |
| 56 | 50103013 | Set Screw | M10x1.5x20 2 |
| 57 | 50201014 | Nut | M10x1.5 2 |
| 58 | 23011077 | Key Clip | 1 |
| 59 | 50322004 | Spring Washer | M5 1 |
| 60 | 50102002 | Hex Socket Cap Screw | M5x0.8x8 1 |
| 61 | 23011076 | Chuck Key | 1 |
| | 23010045 | "JET" Label (not shown) | 1 |



WALTER MEIER (Manufacturing) Inc.

427 New Sanford Road
 LaVergne, Tennessee 37086
 Phone: 800-274-6848
www.waltermeier.com