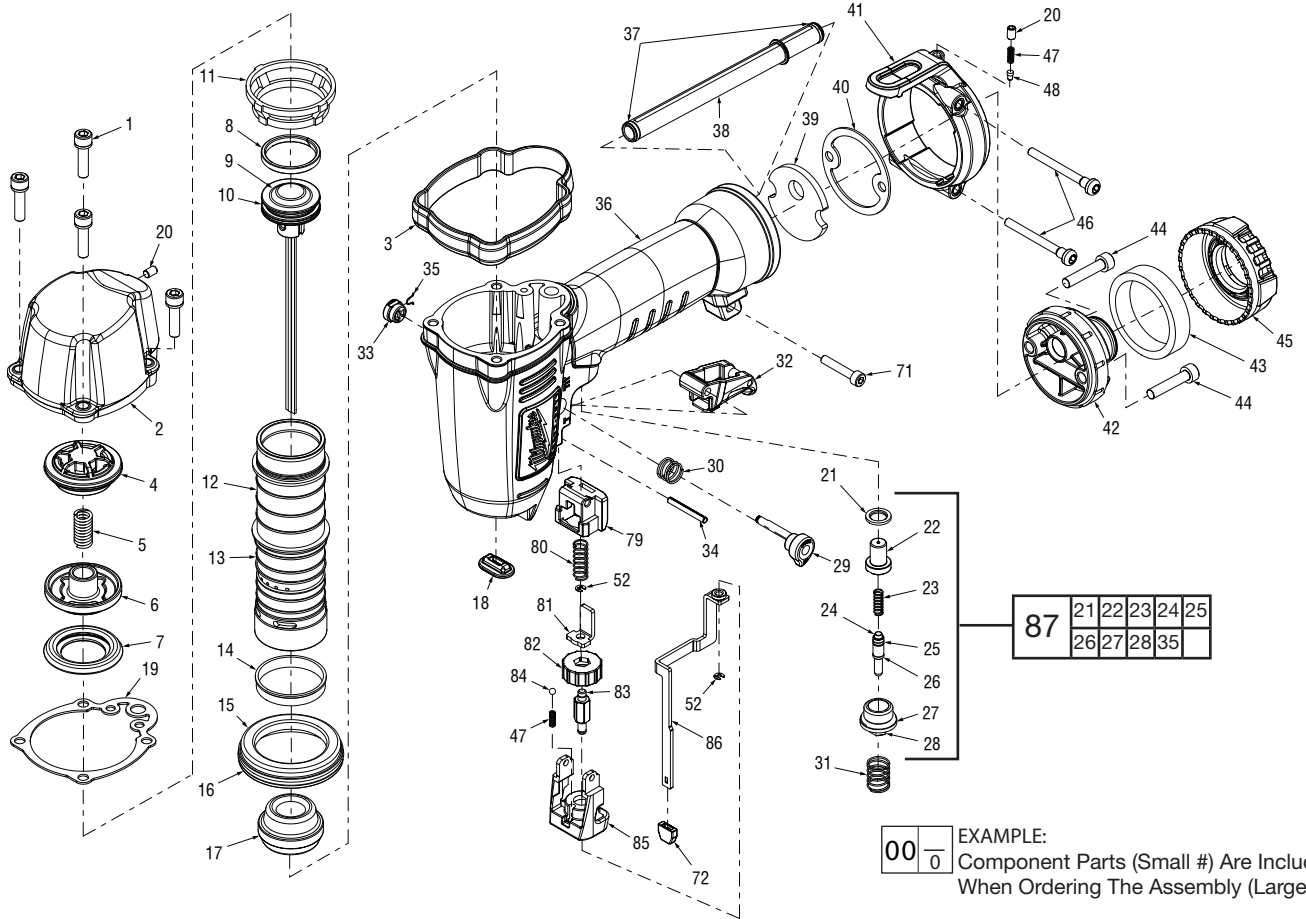




SERVICE PARTS LIST

BULLETIN NO.
54-43-0070

SPECIFY CATALOG NO. AND SERIAL NO. WHEN ORDERING PARTS		REVISED BULLETIN	DATE
FINISH STAPLER			Mar. 2006
CATALOG NO. 7155-21	STARTING SERIAL NUMBER	A91A	
		WIRING INSTRUCTION	



EXAMPLE:
Component Parts (Small #) Are Included When Ordering The Assembly (Large #).

FIG.	PART NO.	DESCRIPTION OF PART	NO. REQ.	FIG.	PART NO.	DESCRIPTION OF PART	NO. REQ.
1	05-84-0835	Bolt Assembly	2	31	40-50-3155	Spring	1
2	42-92-1440	Top Cap	1	32	31-92-0205	Trigger Assembly	1
3	42-38-0385	Bumper Band	1	33	44-86-0710	Retainer	1
4	42-76-0820	Valve Collar	1	34	06-65-1435	Spring Pin, 3 mm x 25 mm	1
5	40-50-3105	Upper Valve Spring	1	35	44-90-0825	Ring	1
6	44-62-0270	Head Valve Piston	1	36	28-50-0820	Tool Body	1
7	45-06-0935	Seal	1	37	34-40-3155	O-Ring	2
8	44-90-0815	Piston Ring	1	38	44-94-0565	Link Rod	1
9	43-12-0280	Driver Assembly	1	39	43-31-0380	Filter	1
10	34-40-3210	O-Ring 23 mm x 2 mm	1	40	43-44-1250	End Cap Gasket	1
11	42-76-0810	Valve Collar	1	41	42-70-0410	Spring Retainer (Belt Clip)	1
12	42-98-0365	Cylinder	1	42	42-92-1370	End Cap	1
13	34-40-3215	O-Ring 32 mm x 2 mm	1	43	43-31-0365	Muffler	1
14	44-90-0725	Cylinder Ring	1	44	05-84-0975	Bolt, M5 x 0.8-25	2
15	45-36-1650	Cylinder Spacer	1	45	31-05-0415	Deflector	1
16	34-40-3185	O-Ring 47.5 mm x 2 mm	1	46	05-83-0535	Round Head Phillips Bolt	2
17	42-38-0305	Bumper	1	47	40-50-3020	Positioning Spring	1
18	43-56-0905	Driver Guide	1	48	45-08-0460	Positioning Shaft	1
19	45-06-0905	Top Cap Seal	1	71	05-84-0890	Screw Hex. Soc. Head	1
20	05-84-0950	Set Screw	1	79	43-78-0450	Spring Hub	1
21	45-06-0955	Seal	1	80	40-50-3045	Work Contact Spring	1
22	43-64-0145	Trigger Valve Head	1	81	42-36-1990	Work Contact Bracket	1
23	40-50-3190	Trigger Valve Spring	1	82	43-98-0765	Adjust Shaft	1
24	44-70-0260	Trigger Valve Plunger	1	83	44-94-0590	Adjust Rod	1
25	34-40-3290	O-Ring	1	84	02-02-2100	Ball	1
26	34-40-3160	O-Ring 2.5 mm x 1.5 mm	1	85	43-56-0885	Work Contact Element Guide	1
27	34-40-3305	O-Ring	1	86	42-36-2005	Work Contact Bracket A	1
28	42-52-0415	Trigger Valve Plunger Cap	1	87	31-94-0105	Trigger Valve Assembly	1
29	44-10-0660	Selector	1	88	45-24-0040	Magazine Assembly	1
30	40-50-3210	Selector Spring	1				

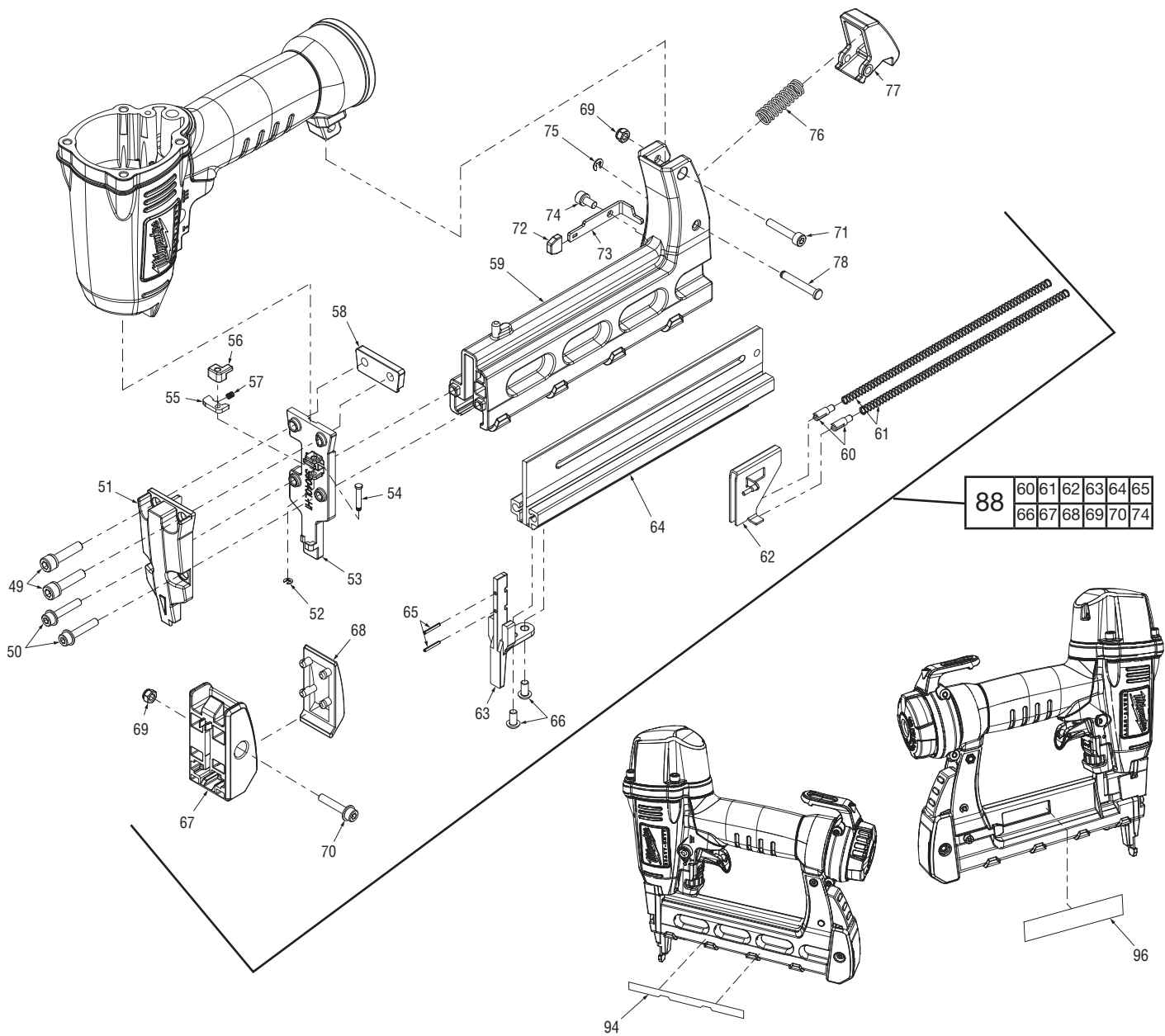


FIG.	PART NO.	DESCRIPTION OF PART	NO. REQ.
49	05-84-0850	Bolt Assembly	2
50	05-84-0960	Bolt w/Flat Washer	2
51	44-66-1345	Work Contact Element Plate	1
52	44-90-0760	E-Ring	1
53	42-92-1375	Driver Guide Cover	1
54	44-60-1875	Fixed Pin	1
55	45-88-1700	Damper	1
56	42-38-0350	Bumper	1
57	40-50-3035	Positioning Spring	1
58	43-44-1260	Gasket	1
59	43-40-0450	Magazine B	1
60	45-08-0475	Pusher Spring Shaft	2
61	40-50-3130	Pusher Spring	2
62	43-72-0370	Pusher	1
63	43-56-0910	Driver Guide	1
64	43-40-0460	Magazine A	1
65	44-60-1910	Spring Pin	2
66	05-83-0515	Half Round Head Hex Bolt	2
67	44-66-1350	Rear Plate	1
68	42-92-1465	Protecting Hood Cover	1
69	05-59-2040	Lock Nut	1
70	05-84-0825	Bolt Assembly	1
71	05-84-0890	Screw Hex. Soc. Head	1

FIG.	PART NO.	DESCRIPTION OF PART	NO. REQ.
72	42-38-0335	No Mar Pad	1
73	42-36-1980	Nail Stopper Bracket	1
74	05-84-0815	Bolt Assembly	1
75	44-90-0765	E-Ring	1
76	40-50-3075	Spring Lock	1
77	44-20-0865	Latch	1
78	44-50-0200	Latch Pin	1
79	43-78-0450	Spring Hub	1
80	40-50-3045	Spring	1
81	42-36-1990	Work Contact Element Bracket	1
82	43-98-0765	Adjustment Knob	1
83	44-94-0590	Adjustment Rod	1
84	02-02-2100	Ball	1
85	43-56-0885	Work Contact Element Hub	1
86	42-36-2005	Work Contact Element Bracket A	1
87	31-94-0105	Trigger Valve Assembly	1
88	45-24-0040	Magazine Assembly	1
94	12-98-0330	Service Nameplate	1
96	10-20-3310	Warning Label	1
	14-70-0130	Overhaul Kit (Not Shown)	
	14-70-0200	Driver Maintenance Kit (Not Shown)	

Disassembly:

- 1, 2 Remove hex bolts (1) from top cap (2) using a 4 mm hex key.
- 2, 4, 5, 6, 7 Remove valve assembly (4, 5, 6, and 7) from top cap (2) using a flat blade screwdriver.
- 11, 12 Remove press ring (11) from top of cylinder (12) prior to removing driver/cylinder assemblies.
- 8, 9, 10, 12, 13, 14, 16, 17, 36 Remove driver assembly (8, 9, 10) and cylinder assembly (12, 13, 14, and 17) from tool body (36) at the same time by placing two flat blade screwdrivers under ring of cylinder (12) 180° apart, and gently prying the cylinder from the tool body. Note: Valve bumper (17) may stay in cylinder (12) or remain in tool body (36).
- 15, 16, 36 Remove cylinder spacer (15) and O-Ring (16) from tool body (36) by placing a flat blade screwdriver under spacer (15) and gently lifting spacer assembly out of the tool body (36).
- 59, 64, 72, 73 Remove magazine A (64) from magazine B (59) by removing screw washer (74) and nail stopper bracket assembly (72 and 73).
- 29, 30, 31, 32, 33, 35 Remove selector assembly (29, 30, 33, 35), and trigger assembly (31,32) from tool body (36) by placing a 3/32 in. (2.5 mm) punch inside half-moon slot of retainer (33) and gently tapping shaft of selector (29) to separate retainer (33) from shaft (29). Remove spring (30), retainer (33) ring (35), spring, (31) and trigger (32) from tool body.
- 21, 22 23, 24, 25, 26, 27, 28, 36 Remove trigger valve plunger cap (28) from tool body (36) using an 8 mm wrench. Remove remaining trigger valve components (21-27).
- 20, 41, 42, 46 Remove belt clip (41) from end cap (42) by removing bolts (46) and loosening set screw (20) only a few turns counterclockwise.
- 42, 45 Remove deflector (45) from end cap (42) using a flat blade screwdriver.
Note: Using excessive force will damage or destroy deflector.

Re-Assembly:

- 21, 22, 23, 24, 25, 26, 27, 28, 36 Reinstall trigger valve assembly components (21-28) into tool body (36) in order shown. Thread assembly into tool body (36) by hand a couple of turns to insure external threads on trigger valve plunger cap (28) properly engage with internal threads inside tool body (36). Secure assembly using an 8 mm wrench.
- 24, 29, 30, 31, 32, 33, 35, Reinstall selection lever assembly (29, 30, 33, 35,) and trigger assembly (31 and 32) by doing the following.
 - Place spring (30) onto shaft of selection lever (29).
 - Position spring (31) and trigger (32) over plunger of trigger valve assembly (26).
 - Insert selection lever assembly (29 and 30) into tool body (36) and align half-moon slot of retainer (33) with half-moon shaft of selection lever (29) and snap retainer assembly (33 and 35) onto the shaft.
- 9, 36 Install flat side of driver guide blade (9) towards trigger assembly (32).
- 12, 14 Reinstall cylinder ring (14) onto cylinder (12) with large flanged end facing the top of cylinder (12).
- 8, 9, 10, 12, 13, 14, 15, 16, 17, 36 Reassemble driver assembly (8, 9, 10), and cylinder assembly (12, 13, and 14) and combine the two together. Set aside. Install cylinder spacer assembly (15, 16) and valve bumper (17) into tool body (36). Install assembly into tool body.
- 6, 14, 19 Reinstall press ring (11) onto top of cylinder (12) with wide edge facing toward top cap (2).
- 2, 4, 5, 6, 7 Reinstall valve collar (4) into internal bore of top cap (2). Place upper valve spring (5) into center of valve collar (4) and push head valve piston assembly (6 and 7) into top cap, applying sufficient pressure to insure seal and collar fit into position inside top cap (2).
- 1, 2, 4, 5, 6, 7, 36 Reinstall top cap assembly (2, 4, 5, 6, 7) onto tool body (36) and install hex bolts (1).
Note: To properly seat top cap, tighten the screws at alternating corners a few turns at a time until all screws are secure.
- 59, 64, 72, 73 Reinstall magazine A (64) into magazine B (59) and install screw/washer and nail stopper bracket assembly (72 and 73).
- 39, 42 Install smooth side of filter (39) toward end cap (42).
- 20, 41, 42, 46 Reassemble belt clip (41) onto end cap (42) and tighten set screw (20) until it's flush with the top thread of the clip and Install bolts (46).
- 1, 44, 49, 50, 66, 74 Apply Blue Loctite® 242 to fasteners 1, 44, 49, 50, 66, and 74.

Lubrication:

Type I Grease 49-08-7100

Clean all parts with a dry, clean cloth.

- | | |
|---------------------------------|--|
| 2, 4, 5, 6, 7 | Place a thin coating of grease into internal bore of top cap (2). Coat parts (4-7) and reassemble in order shown. |
| 8, 9, 10 | Coat O-Ring (10) and piston ring (8) prior to installing into groove of driver assembly (9). |
| 18, 20, 23, 24 | Coat O-Ring (13), cylinder spacer (15), O-Ring (16) and cylinder ring (14) prior to installing onto cylinder (12). |
| 21, 22 23, 24, 25, 26 27,
28 | Coat individual parts of the trigger valve assembly (21-27).
Note: Plunger cover (28) does not require lubrication. |