

Type:
Part no.:

SCT 5-40 UX (60Hz,120V)
72131409360



Item	Part no.	Designation	Quantity	Price RPR excl. VAT (USD)	AT
0010	31901138011	Motor housing	1	on req.	-
0020	30701234002	Speed setting switch	1	on req.	-
0021	43013052033	Cylinder head screw	2	on req.	-
0040	30701249004	Toggle switch	1	on req.	-
0060	30712089023	Brush holder	2	on req.	-
0065	30711134005	Carbon brush	2	on req.	-
0080	43070018009	Screw	2	on req.	-
0090	51274004117	Stator	1	on req.	-
0100	43070014000	Screw	2	on req.	-
0110	31428149008	Air guide ring	1	on req.	-
0120	32431046000	Cable clamping piece	1	on req.	-
0130	43070006008	Screw	1	on req.	-
0160	30719565016	Connecting cable	1	on req.	-
0170	30719566019	Connecting cable	1	on req.	-
0180	30719630014	Connecting cable	1	on req.	-
0190	31201136010	Handle half shell	1	on req.	-
0200	31201137000	Handle half shell	1	on req.	-
0205	31201136030	Handle Repair-Set	1	on req.	-
0210	32805191002	Switch pushbutton	1	on req.	-
0220	43066009038	Countersunk screw	1	on req.	-
0240	43046003009	Sheet metal screw 3,9X22	2	on req.	-
0250	43070007002	Screw	1	on req.	-
0270	30706327017	Cable	1	on req.	-
0275	30707345019	Cable with plug	1	on req.	-
0280	31413233000	Cable grommet	1	on req.	-
0301	53274004119	Armature Z=5	1	on req.	-
0310	32612063005	Sealing ring	1	on req.	-
0340	41701001172	Grooved ball bearing	2	on req.	-
0350	31506367005	Intermediate bearing	1	on req.	-
0360	31508251002	Gearbox housing	1	on req.	-
0370	41701202018	Grooved ball bearing	1	on req.	-
0380	32415042004	Disc	1	on req.	-
0390	41715029009	Needle cage	1	on req.	-
0400	33657170007	Gear-wheel Z=43	1	on req.	-
0410	33408020004	Dog clutch shaft	1	on req.	-
0420	41701010010	Grooved ball bearing	1	on req.	-
0430	30901232008	Spiral spring	1	on req.	-
0440	30220028005	Bolt	1	on req.	-
0450	30104136000	Tool holder	1	on req.	-
0460	30503151006	Sleeve	1	on req.	-
0470	41708014001	Ball	1	on req.	-
0480	33022034001	Screw	1	on req.	-
0490	43058002044	Set screw	1	on req.	-
0500	31603045005	Bush	1	on req.	-
0510	40612093004	Sealing ring	1	on req.	-
0520	30901362001	Spiral spring	1	on req.	-
0530	32601274004	Ring	1	on req.	-
0540	42615147001	Circlip	1	on req.	-
0705	30505069011	Stop sleeve	1	on req.	-

Type:
Part no.:

SCT 5-40 UX (60Hz,120V)
72131409360

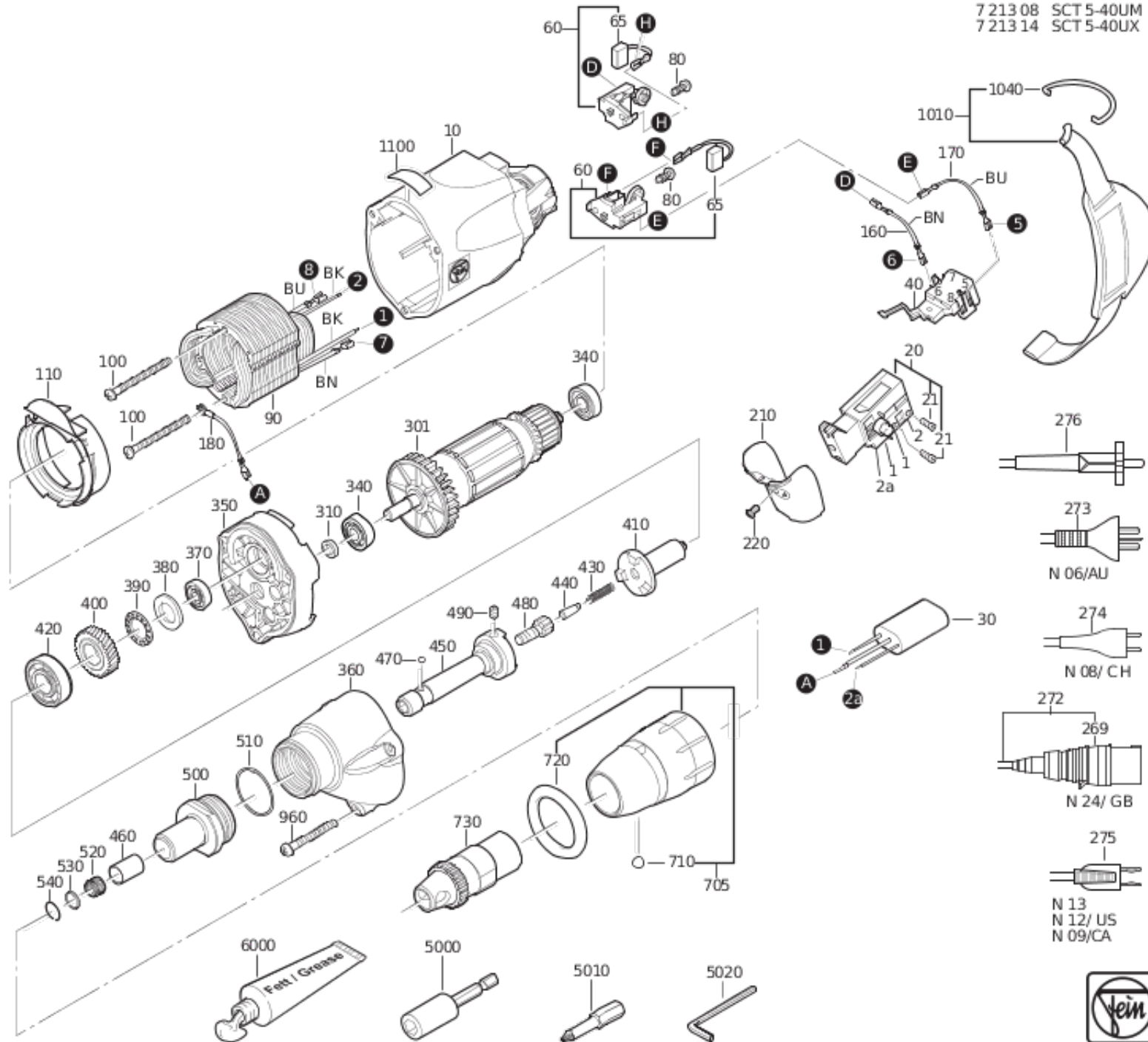


Item	Part no.	Designation	Quantity	Price RPR excl. VAT (USD)	AT
0710	41708019004	Ball	2	on req.	-
0720	40612071009	Sealing ring	1	on req.	-
0730	32127068000	Sleeve	1	on req.	-
0960	43072010009	Screw	3	on req.	-
1010	63901011059	Holder	1	on req.	X
1040	30232046008	Wire clamp	1	on req.	-
1100	32217382018	Information sign	1	on req.	-
5000	60510215003	Tool holder ¼" external hexagon	1	on req.	-
5010	62712109034	Bits ¼ Hex socket	1	on req.	-
5020	62907029006	Allen key SW2	1	on req.	-
6000	32160003014	Lubricant tube 0,085 kg	1	on req.	-
9000	34101102060	Operating instructions	1	on req.	-
9010	34151102010	List of spare parts SCT5-40UX	1	on req.	-
9020	34130054061	Safety instruction	2	on req.	-

Type:
Part no.:

SCT 5-40 UX (60Hz,120V)
72131409360

7 213 08 SCT 5-40UM
7 213 14 SCT 5-40UX



Type:
Part no.:

SCT 5-40 UX (60Hz,120V)
72131409360

7 213 08 SCT 5-40UM
7 213 14 SCT 5-40 UX

