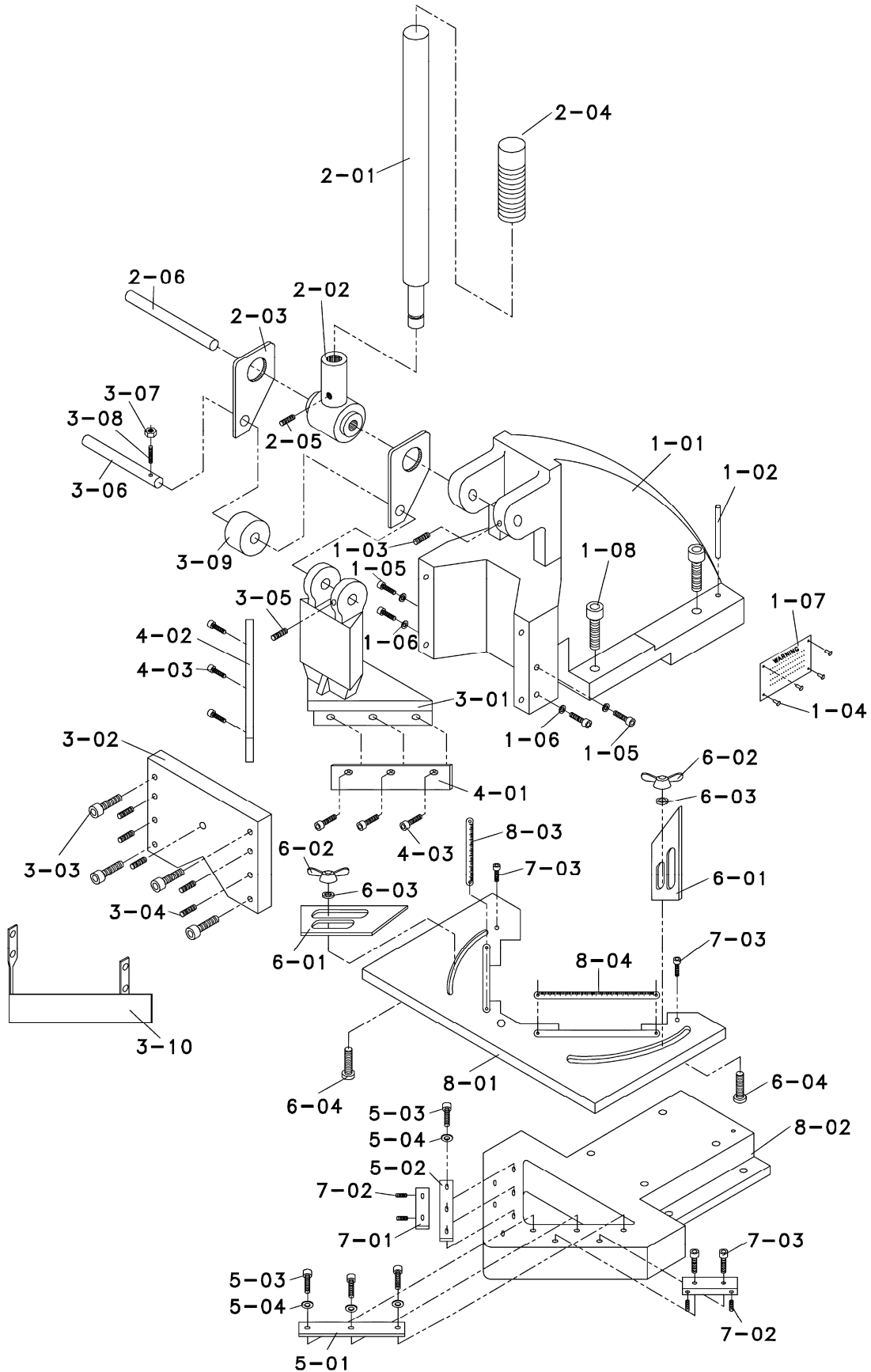


# Breakdown for the HN-16T Hand Notcher



## Parts List for the HN-16T Hand Notcher

| Index No. | Part No.   | Description            | Size   | Quantity |
|-----------|------------|------------------------|--------|----------|
| 1-01      | HN16N-1-01 | Body                   |        | 1        |
| 1-02      | HN16N-1-02 | Pin                    | Ø6x55  | 2        |
| 1-03      | TS-1523061 | Set Screw              | M6x20  | 1        |
| 1-04      | HN16N-1-04 | Rivet                  | Ø2x4   | 12       |
| 1-05      | TS-1503031 | Socket Head Cap Screw  | M6x12  | 4        |
| 1-06      | TS-1550041 | Washer                 | Ø6     | 4        |
| 1-07      | HN16N-1-07 | Warning Label          |        | 1        |
| 1-08      | TS-1492071 | Hex Cap Bolt           | M12x65 | 4        |
| 1-09      | HN16N-1-09 | Label (not shown)      |        | 1        |
| 2-01      | HN16N-2-01 | Lever                  |        | 1        |
| 2-02      | HN16N-2-02 | Cam                    |        | 1        |
| 2-03      | HN16N-2-03 | Plate                  |        | 2        |
| 2-04      | HN16N-2-04 | Cap                    |        | 1        |
| 2-05      | TS-1524041 | Set Screw              | M8x16  | 1        |
| 2-06      | HN16N-2-06 | Shaft                  |        | 1        |
| 3-01      | HN16N-3-01 | Ram                    |        | 1        |
| 3-02      | HN16N-3-02 | Fixed Plate            |        | 1        |
| 3-03      | TS-1504051 | Socket Head Cap Screw  | M8x25  | 4        |
| 3-04      | TS-1524051 | Set Screw              | M8x20  | 5        |
| 3-05      | TS-1523051 | Set Screw              | M6x14  | 1        |
| 3-06      | HN16N-3-06 | Shaft                  |        | 1        |
| 3-07      | TS-1540061 | Hex Nut                | M8     | 2        |
| 3-08      | HN16N-3-08 | Set Screw              | M8x40  | 1        |
| 3-09      | HN16N-3-09 | Shaft Bushing          |        | 1        |
| 3-10      | HN16N-3-10 | Guard                  |        | 1        |
| 4-01      | HN16N-4-01 | Upper Blade (right)    |        | 1        |
| 4-02      | HN16N-4-02 | Upper Blade (left)     |        | 1        |
| 4-03      | TS-1505031 | Socket Head Cap Screw  | M10x25 | 6        |
| 5-01      | HN16N-5-01 | Lower Blade (right)    |        | 1        |
| 5-02      | HN16N-5-02 | Lower Blade (left)     |        | 1        |
| 5-03      | TS-1504051 | Socket Head Cap Screw  | M8x25  | 6        |
| 5-04      | TS-1550061 | Washer                 | Ø8     | 6        |
| 6-01      | HN16N-6-01 | Side Positioning Block |        | 2        |
| 6-02      | TS-0590031 | Wing Nut               | M10    | 4        |
| 6-03      | TS-1550071 | Washer                 | Ø10    | 4        |
| 6-04      | HN16N-6-04 | Screw                  |        | 4        |
| 7-01      | HN16N-7-01 | Positioning Block      |        | 2        |
| 7-02      | TS-1523061 | Set Screw              | M6x20  | 4        |
| 7-03      | TS-1504041 | Socket Head Cap Screw  | M8x20  | 7        |
| 8-01      | HN16N-8-01 | Table                  |        | 1        |
| 8-02      | HN16N-8-02 | Base                   |        | 1        |
| 8-03      | HN16N-8-03 | Scale (left)           |        | 1        |
| 8-04      | HN16N-8-04 | Scale (right)          |        | 1        |

An accessory stand (part no. 754017) is available for the Hand Notcher. See your dealer or call Walter Meier (Manufacturing) Inc., to order.