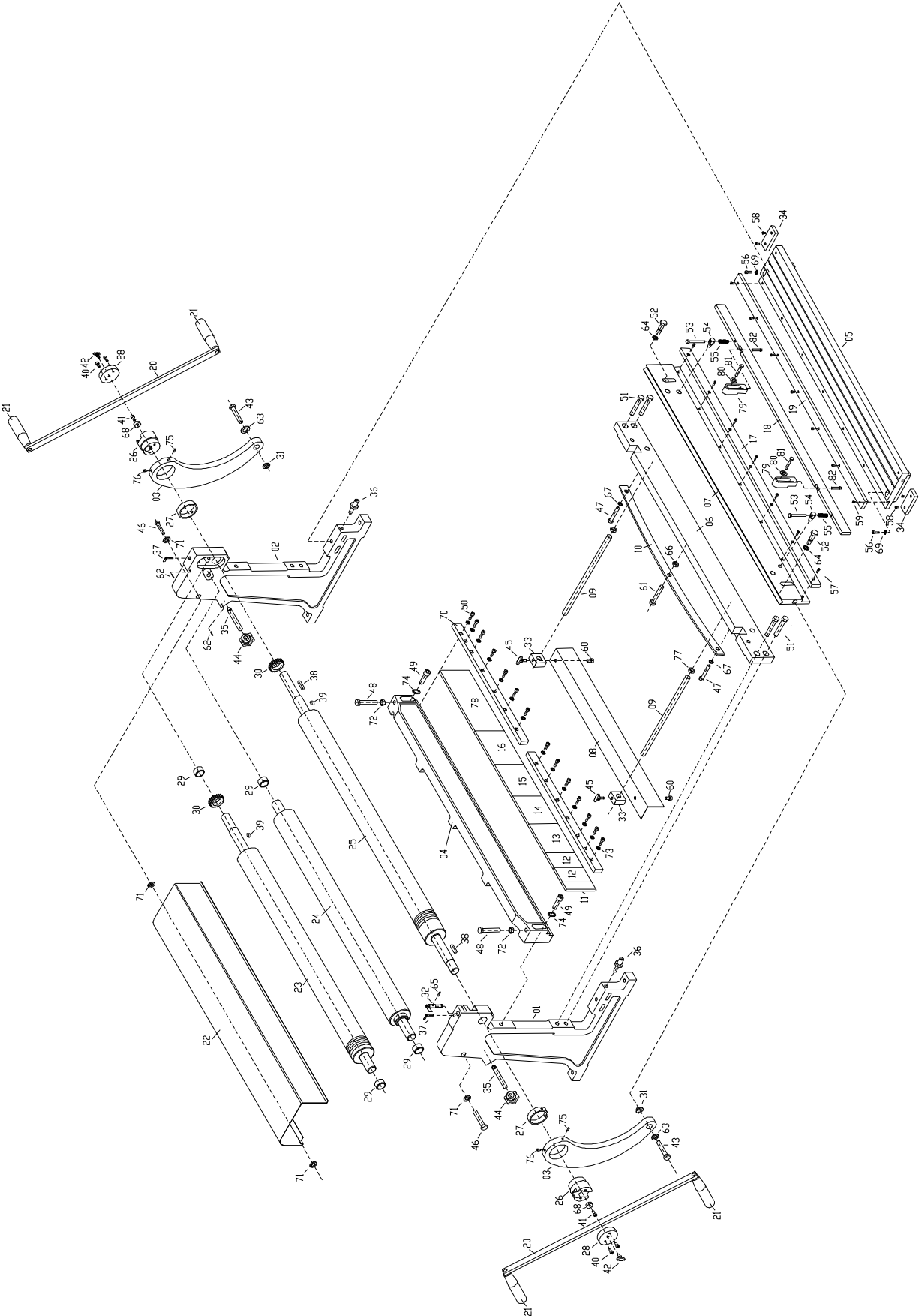


10.2.1 SBR-40M Shear/Brake/Roll – Exploded View



10.2.2 SBR-40M Shear/Brake/Roll – Parts List

Index No.	Part No.	Description	Size	Qty
01	SBR40M-01	Frame (left)		1
02	SBR40M-02	Frame (right)		1
03	SBR30M-03	Arm		2
04	SBR40M-04	Cross Beam		1
05	SBR40M-05	Table		1
06	SBR40M-06	Spacer Bar		1
07	SBR40M-07	Cutter Plate		1
08	SBR40M-08	Guide Plate		1
09	SBR40M-09	Guide Rod		1
10	SBR40M-10	Guide Bar		1
11	SBR30M-11	Brake Forming Die	1"	1
12	SBR30M-12	Brake Forming Die	2"	2
13	SBR30M-14	Brake Forming Die	4"	1
14	SBR30M-15	Brake Forming Die	6"	1
15	SBR40M-15	Brake Forming Die	7"	1
16	SBR40M-16	Brake Forming Die	8"	1
17	SBR40M-17	Cutter		1
18	SBR40M-18	Press Plate		1
19	SBR40M-19	Cutter		1
20	SBR40M-20	Handle Bar		2
21	SBR30M-21	Handle		4
22	SBR40M-22	Cover		1
23	SBR40M-23	Roll		1
24	SBR40M-24	Lower Press Roll		1
25	SBR40M-25	Upper Press Roll		1
26	SBR30M-26	Eccentric Shaft		2
27	SBR30M-27	Bushing		2
28	SBR30M-28	Eccentric Cap		2
29	SBR40M-29	Bushing		1
30	SBR40M-30	Gear		1
31	SBR30M-31	Pivot Bushing		2
32	SBR40M-32	Thumb Screw		1
33	SBR40M-33	Guide Block		2
34	SBR40M-34	Block		2
35	SBR40M-35	Screw		2
36	SBR40M-36	Locating Bolt		2
37	SBR30M-37	Adjustable Bolt		2
38	SBR40M-38	Key	8x7x25mm	2
39	SBR40M-39	Key	5x5x6mm	2
40	TS-1503031	Socket Head Cap Screw	M6x12	4
41	TS-1503031	Socket Head Cap Screw	M6x12	2
42	SBR30M-42	T-Handle	M8x25	2
43	SBR30M-43	Hex Cap Bolt	M12x70	2
44	SBR30M-44	Star Grip Knob	M10	2
45	SBR30M-42	T-Handle	M8x25	2
46	TS-1482081	Hex Cap Screw	M6x40	2
47	TS-1492021	Socket Head Cap Screw	M12x30	2
48	TS-2211451	Hex Cap Screw	M12x45	2
49	TS-1506051	Socket Head Cap Screw	M12x40	2
50	TS-1505051	Socket Head Cap Screw	M10x35	14
51	TS-1506041	Socket Head Cap Screw	M12x35	4
52	SBR40M-52	Screw		2
53	SBR30M-53	Hex Cap Bolt	M8x90	2
54	SBR40M-54	Pressure Plate Bracket		2
55	SBR40M-55	Spring		2
56	TS-1505031	Socket Head Cap Screw	M10x25	2

Index No.	Part No.	Description	Size	Qty
57	TS-1504021	Socket Head Cap Screw	M8x12	9
58	TS-1503031	Socket Head Cap Screw	M6x12	4
59	TS-1504021	Socket Head Cap Screw	M8x12	9
60	TS-1504021	Socket Head Cap Screw	M8x12	2
61	SBR40M-61	Hex Cap Bolt	M12x65	1
62	SBR30M-62	Spring Pin	5x20mm	4
63	SBR30M-63	Plain Washer	12mm	2
64	SBR40M-64	Plain Washer	12mm	2
65	TS-1524051	Hex Socket Set Screw	M8x20	1
66	SBR30M-66	Adjustment Nut	M12	1
67	TS-1550071	Plain Washer	10mm	2
68	SBR30M-68	Cover		2
69	SBR30M-69	Special Washer	10mm	2
70	SBR40M-70	Press Plate		2
71	TS-1550041	Plain Washer	6mm	4
72	SBR30M-72	Hex Thin Nut	M12	2
73	TS-1550071	Plain Washer	10mm	14
74	SBR40M-74	Special Washer	12mm	2
75	SBR30M-75	Hex Socket Set Screw	M8x20	2
76	SBR30M-76	Zerk Fitting	8mm	2
77	TS-154010	Hex Nut	M16	16
78	SBR40M-78	Brake Forming Die	12"	1
79	SBR40M-79	Press Plate Bracket		2
80	SBR40M-80	Plain Washer	12mm	2
81	SBR40M-81	Hex Cap Bolt	M12x45	2
82	TS-1503071	Socket Head Cap Screw	M6x30	2
	SBR40M-ID	I.D. Label (not shown)		1
	SBR30M-WL	Warning Label (not shown)		1



WALTER MEIER (Manufacturing) Inc.

427 New Sanford Road
 LaVergne, Tennessee 37086
 Phone: 800-274-6848
www.waltermeier.com