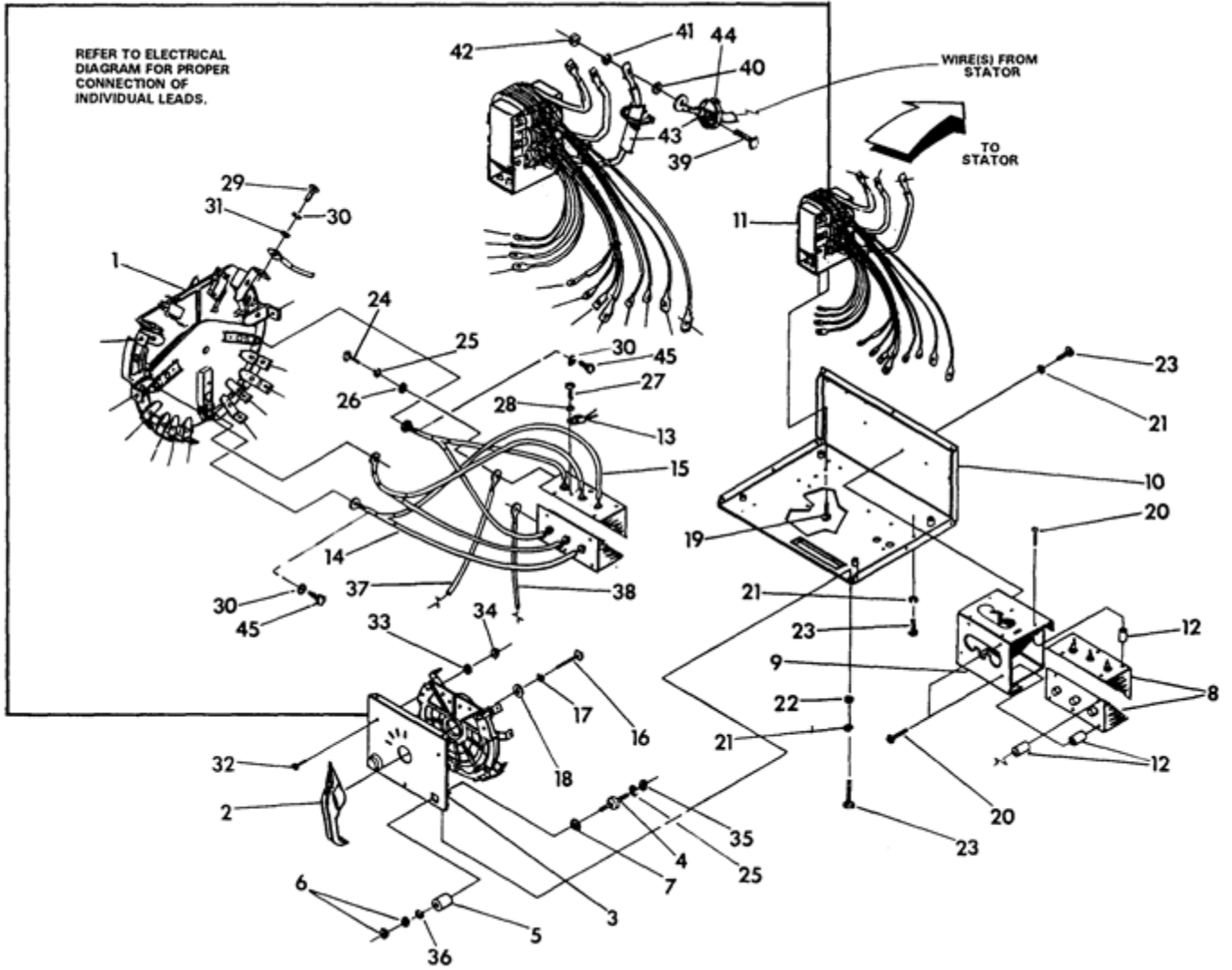


Ref #	Part #	Description	Context Note	Foot Note
1	94788	BASE, CONTROL		
2	90366	REACTOR ASSEMBLY		
3	94787	COVER, CONTROL BASE		
4	94995	PANEL, CONTROL		
5	42813	KNOB, BLACK		
6	82538	SWITCH, ROCKER-ON-OFF		
7	87798	SWITCH, SPDT		
8	68759	OUTLET, 120V. 20 AMP. DUPLEX		
9	68867	OUTLET, 120/240V. 20 AMP.		
10	68868	OUTLET, 120V. 30 AMP.		
11	53693	POTENTIOMETER 10K		
12	92599	INSULATOR, POTENTIOMETER		
13	66822	OUTLET & RETAINER-12V.	(66822 Is Screw In Replacement. If Customer Needs Snap Type Must Order 90418.)	
14	82545	LED, FAULT INDICATOR		
15	75207A	30 AMP. CIRCUIT BREAKER		
16	75207	20 AMP. CIRCUIT BREAKER		
17	75207B	10 AMP. CIRCUIT BREAKER		
18	65795	BATTERY CHARGE RECTIFIER		
19	32300	FUSE HOLDER		
20	A3157	20A FUSE		
21	43181	PPHMS-M3-0.5 x 10		
22	43182	LOCKWASHER-M3		
23	36939	PPHMS-10-32 x 1-1/4		
24	23897	FLATWASHER-#10		
25	22152	LOCKWASHER-#10		
26	22158	HEX NUT-10-32		
27	75475	PPHMS-M4-0.7 x 10		
28	38150	FLATWASHER-M4		
29	22264	LOCKWASHER-M4		
30	51715	HEX NUT-M4-0.7		
31	50545	FOAM WASHER		
32	26579	M4 LOCKWASHER EXTERNAL		
33	93944	BRACKET MOUNTING, PC BOARD		

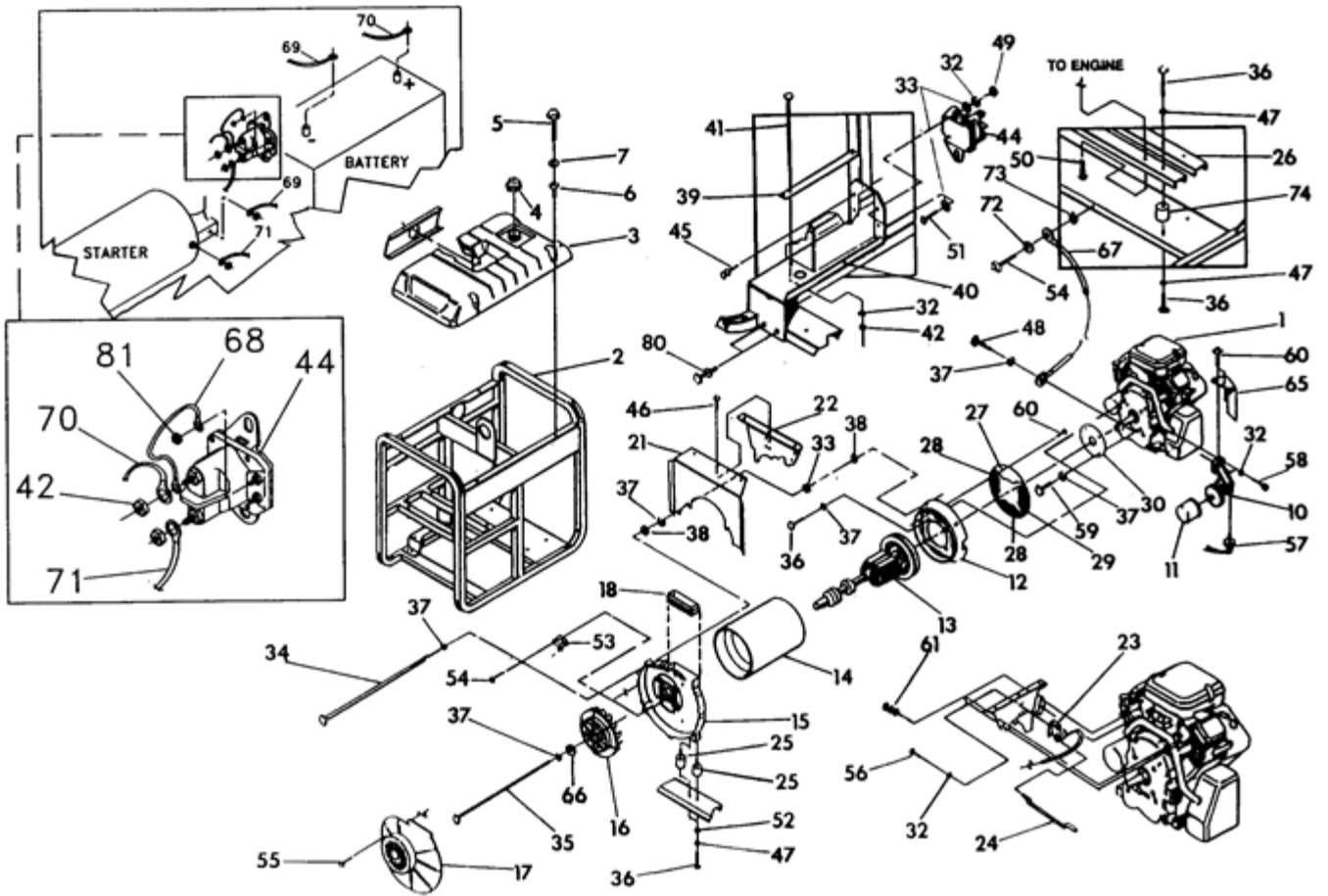
Ref #	Part #	Description	Context Note	Foot Note
34	93929	STAND-OFF, CIRCUIT BOARD		
35	93796	CIRCUIT BOARD ASSEMBLY #2		
36	93986	HHCS-M3-0.5 x 16		
37	75476	PPHMS-M4-0.7 x 16		
38	51753	M6-1.0 x 40MM		
39	22129	LOCKWASHER-M6		
40	22473	FLATWASHER-M6		
41	92973	RELAY AUXILARY POWER		
42	57334	RELAY BATTERY CHARGE		
43	23484F	SNAP BUSHING		
44	57345	LUG 4 TABS		
45	23364	SHAKEPROOF INTERNAL #6		
46	93049	BOARD, CIRCUIT #1		
47	94783	SIDE, CONTROL PANEL		
48	95024	HEATSINK, AUX. POWER		
49	94699	AUX. POWER SUPPLY		
50	84932	HHCS M4-0.7 x 30MM		
51	50830	HHCS-M5-0.8 x 40MM		
52	68759	OUTLET, 120V. 20A.		

REFER TO ELECTRICAL
DIAGRAM FOR PROPER
CONNECTION OF
INDIVIDUAL LEADS.



Ref #	Part #	Description	Context Note	Foot Note
1	90381	SWITCH ASSEMBLY		
2	90382	HANDLE, SWITCH		
3	94789	SWITCH PANEL		
4	89533	BOLT, CARRIAGE		
5	88750	INSULATOR OUTER		
6	91849	NUT, BRASS 1/2"		
7	88749	INSULATOR INNER		
8	90376	HEATSINK, 300 AMP.		
9	90377	HEATSINK SUPPORT		
10	94788	BASE, CONTROL		
11	90366	REACTOR ASSEMBLY		
12	92568	INSULATOR HEATSINK		
13	92876	THERMISTOR OVERLOAD		
14	90380	DIODE		
15	90386	DIODE		
16	57821	HHCS-M8-1.25 x 40MM		
17	22129	LOCK WASHER-M8		
18	22145	WASHER FLAT-M8		
19	24526	CRIMPTITE 5/16-12 x 3/4 LONG		
20	51787	M4-0.7 x 16 HHCS		
21	22264	LOCKWASHER-M4		
22	43180	FLATWASHER-M4		
23	75476	PPHMS-M4-0.7 x 16 LONG		
24	33209	HHCS-3/8-24 x 3/4 LONG		
25	22237	LOCKWASHER-3/8"		
26	22131	FLATWASHER-3/8"		
27	51717	PPHMS-M3-0.5 x 12MM		
28	43182	LOCKWASHER-M3		
29	52618	HHCS-M5-0.8 x 12		
30	49226	LOCKWASHER-M5		
31	51713	FLATWASHER-M5		
32	36936	PPHMS-10-32 x 7/8 LG.		
33	22152	LOCKWASHER-#10		
34	22158	HEX NUT-#10-32		
35	22241	HEX NUT-3/8-16		
36	88460	LOCKWASHER-1/2"		
37	93777A	BRAIDED CABLE ASSEMBLY		
38	93777	BRAIDED CABLE ASSEMBLY		
39	47411	HHCS-M6-1.0 x 16		
40	49811	FLAT WASHER-M6		
41	22097	LOCK WASHER-M6		

Ref #	Part #	Description	Context Note	Foot Note
42	49813	HEX NUT-M6		
43	94808	SLEEVING 3/4"		
44	28739	TIE-WRAP 4 INCH		
45	33141	HHMS 10-32 x 3/4"		



Ref #	Part #	Description	Context Note	Foot Note
1	88175	ENGINE 18 H.P. W/STEPPER MOTOR		
2	90917	CRADLE ASSEMBLY V-TWIN WELDER		
3	93615	TANK FUEL 5-GALLON		
4	90878	CAP, FUEL		
5	79816	HHCS-M6-1.0 x 35 SEMS		
6	83465	GROMMET-TANK		
7	78830	WASHER, SPECIAL BLACK		
10	90914	FILTER, ADAPTOR OIL		
11	70185	FILTER, OIL		
12	92774	ENGINE ADAPTOR		
13	94645	ROTOR ASSEMBLY 300 AMP. WELDER		
14	94706	STATOR ASSEMBLY 300 AMP.		
15	90910	BEARING CARRIER REAR		
16	91524	FAN, REAR COOLING		
17	90906	COVER, COOLING FAN		
18	90966	DUCT, AIR RUBBER		
21	90916	SHIELD, HEAT STATOR		
22	93322	SHIELD, HEAT ENGINE		
23	92102	STEPPER MOTOR ASSEMBLY		
24	92526	LEVER, ROD GOVERNOR		
25	35097	VIBRATION DAMPENER		
26	92582	ENGINE SUPPORT		
27	71791	PLATE, COVER-ALT.		
28	55275	GUARD & RODENT SCREEN		
29	93684	SCREEN, COVER		
30	55277	GUARD, CENTER		
31	51713	HHCS-M6-1.0 x 40MM LONG		
32	22097	LOCKWASHER-M6		
33	22473	FLAT WASHER-M6		
34	93466	STATOR BOLTS 5/16-24 x 12.25		
35	A2593	HHCS 5/16-24 x 12.75		
36	23152	HHCS 3/8-16 x 3/4"		
37	22129	LOCK WASHER 5/16		
38	24114	HEX NUT-5/16		
39	44951	BATTERY HOLD DOWN BAR		
40	84650	BATTERY TRAY		
41	45000	1/4"-20 x 7" BOLT		
42	22127	1/4"-20 HEX NUT		
43	22145	5/16 FLATWASHER		
44	86729	SOLENOID 12V.		
45	86292	SCREW, #10 SELF DRILL		

Ref #	Part #	Description	Context Note Foot Note
46	56892	CRIMPTITE 10-24 x 3/8	
47	22237	LOCKWASHER-3/8	
48	42907	HHCS-M8-1.25 x 16MM	
49	49813	NUT M6-1.0	
50	75246	TAPTITE 3/8-16 x 1/4	
51	47411	HHCS-M6-1.0 x 16MM	
52	22131	FLAT WASHER 3/8"	
53	66386	BRUSH HOLDER ASSEMBLY	
54	66849	TAPTITE M5-0.8 x 16	
55	24911	TAPTITE #8 x 3/8"	
56	43146	HHCS-M6-1.0 x 10MM	
57	60108	LOW OIL PRESSURE SWITCH	
58	64182	SHCS M6-1.0 x 16	
59	20047	HHCS-5/16-24 x 1/2"	
60	46852	#10-32 x 1/4"	
61	94084	FLANGE HHCS	
65	93841	SHIELD, HEAT OIL SENSORS	
66	42774	BELLEVILLE WASHER 5/16	
67	16653621	GROUND WIRE	
68	17253621	SOLENOID JUMP WIRE	
69	16153621	BATTERY GROUND CABLE	
70	16053621	POSITIVE BATTERY CABLE	
71	16253621	STARTER/SOLENOID CABLE	
72	23897	M5 FLATWASHER	
73	22769	SHAKEPROOF	
74	46911	VIBRATION DAMPENER	
80	58442	1/4-20 x 1/2 CRIMPTITE	
81	22158	NUT 10-32	