

1 TORQUE 20-25 IN-LBS

25 INSTALL WIRE TIE TO WIRE HARNESS ASSY FROM PANNEL ASSY AFTER WIRE HARNESS IS INSERTED THROUGH END COVER

SEE SECTION A-A

20 LUBE WITH LIGHT OIL OR SOAP PRIOR TO INSTALLATION

21 LUBE WITH LIGHT OIL OR SOAP PRIOR TO INSTALLATION

22 LUBE WITH LIGHT OIL OR SOAP PRIOR TO INSTALLATION

8 TORQUE 45-55 IN-LBS

19 SEE SECTION A-A

39 TORQUE 170-190 IN-LBS

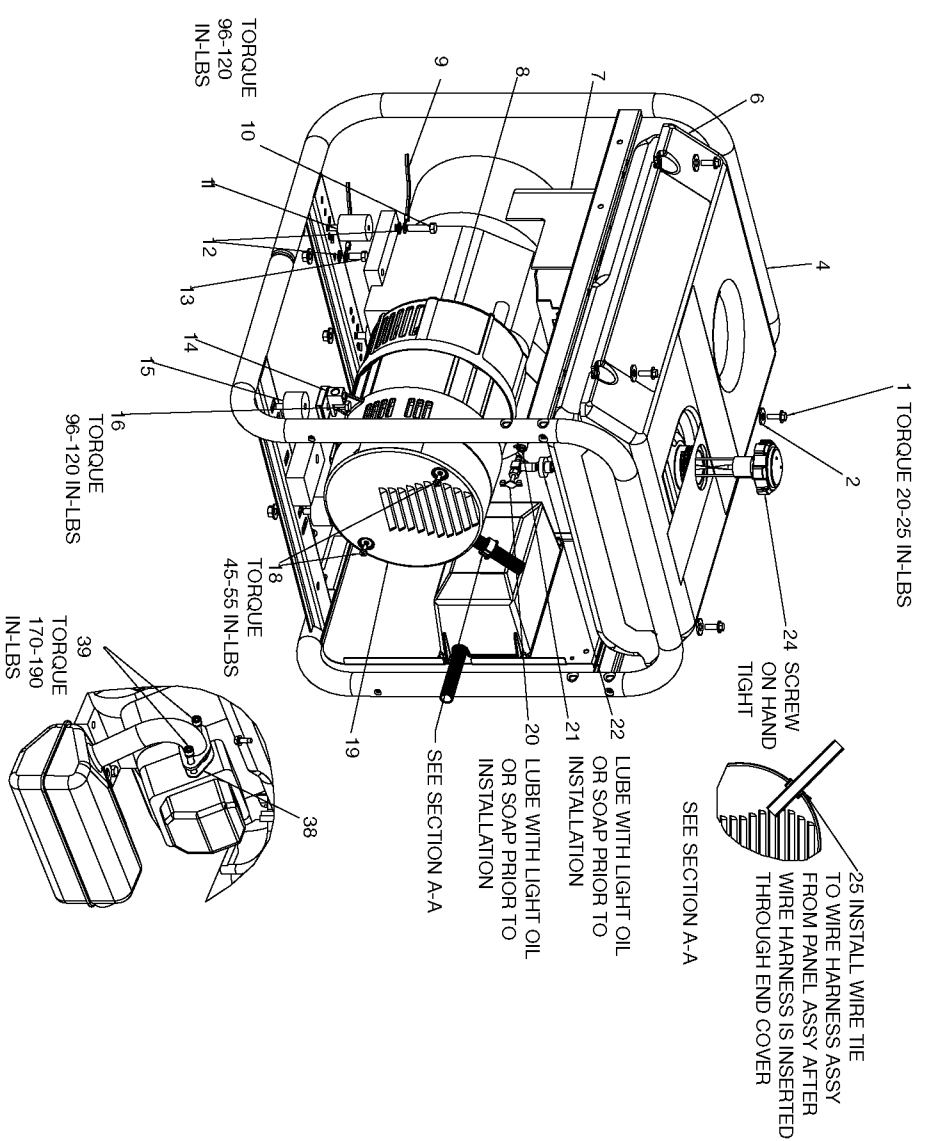
TORQUE 96-120 IN-LBS

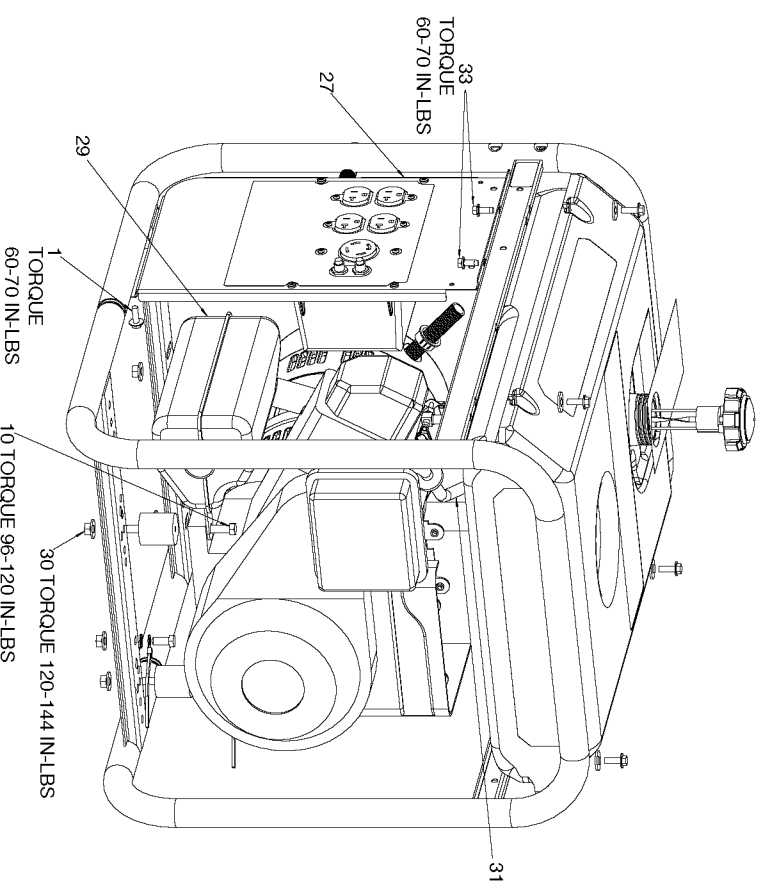
TORQUE 96-120 IN-LBS

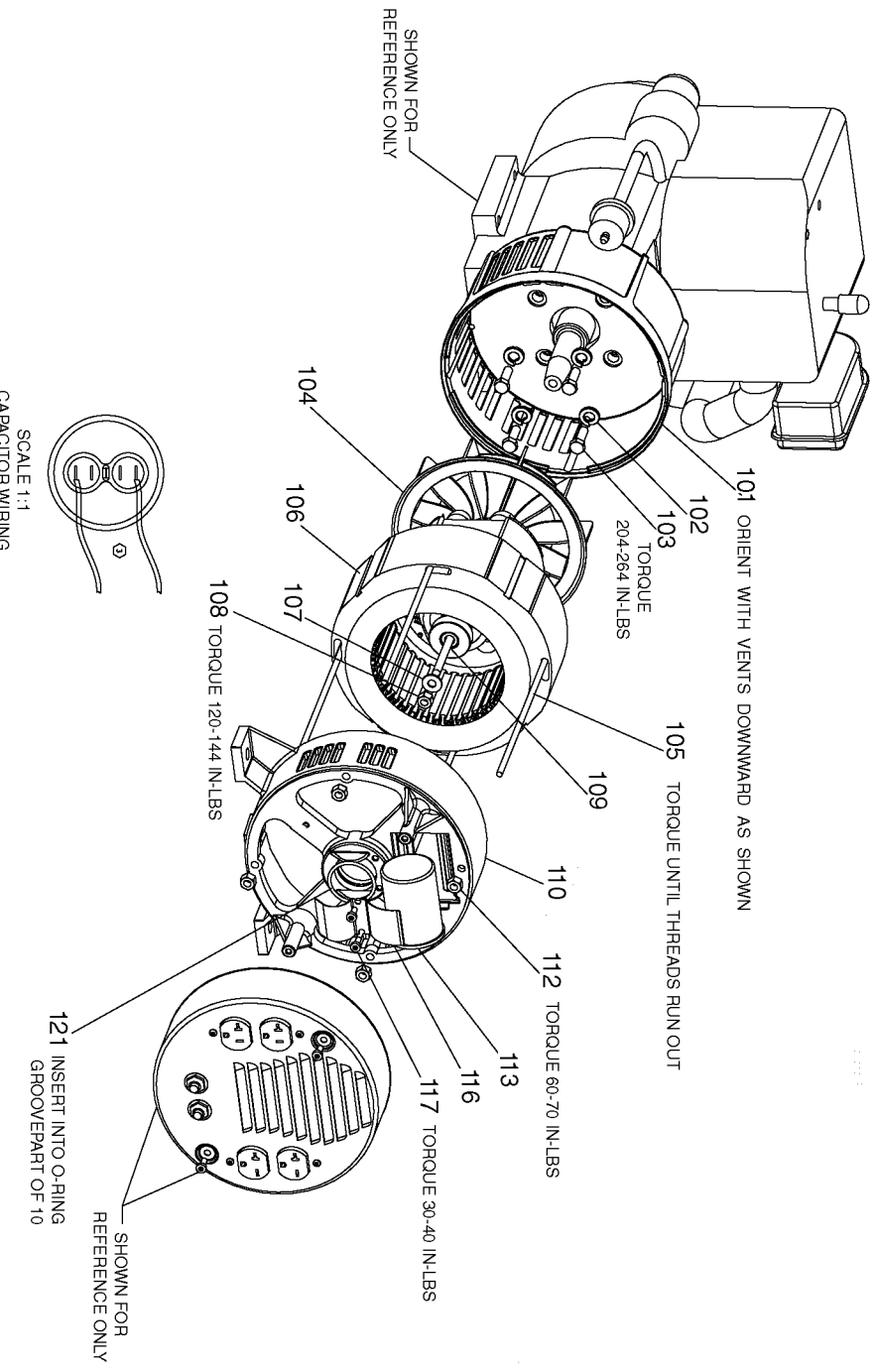
TORQUE 170-190 IN-LBS

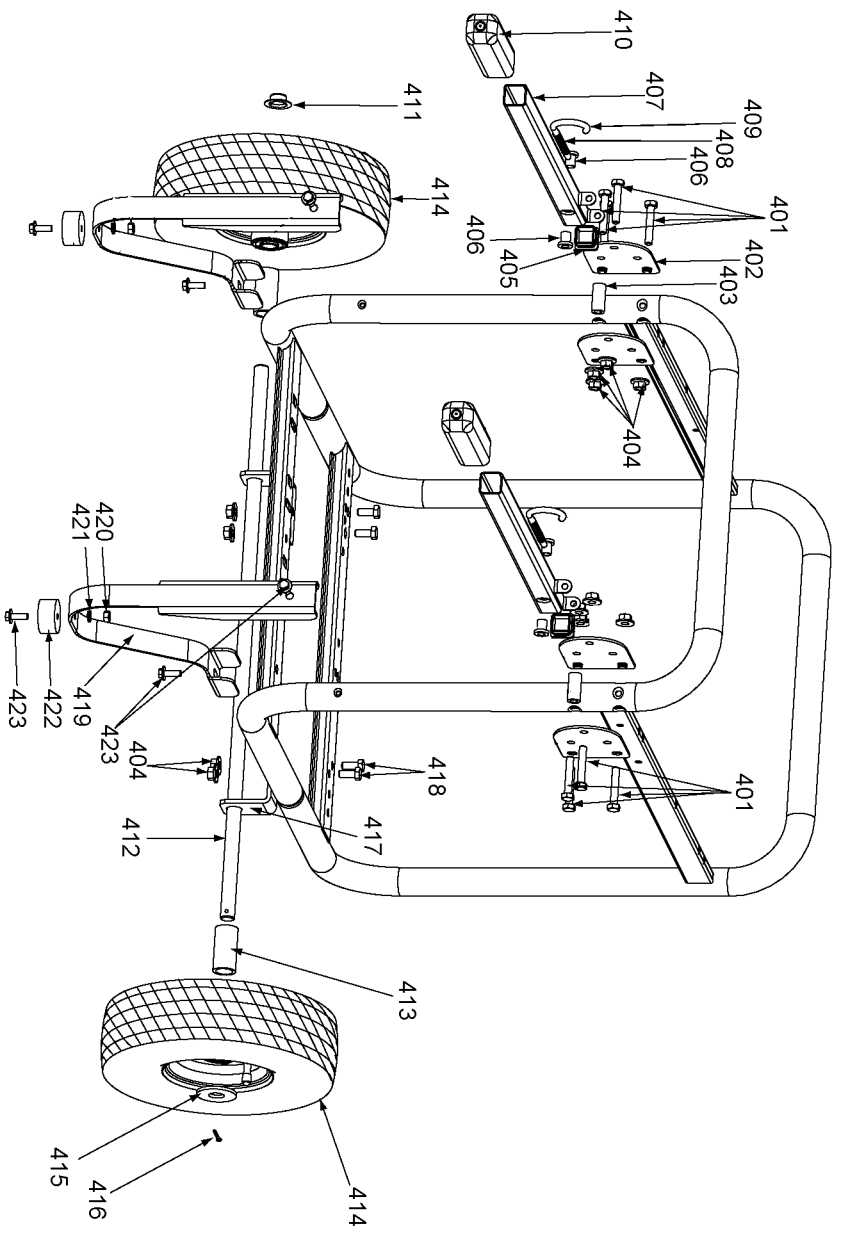
24 SCREW ON HAND TIGHT

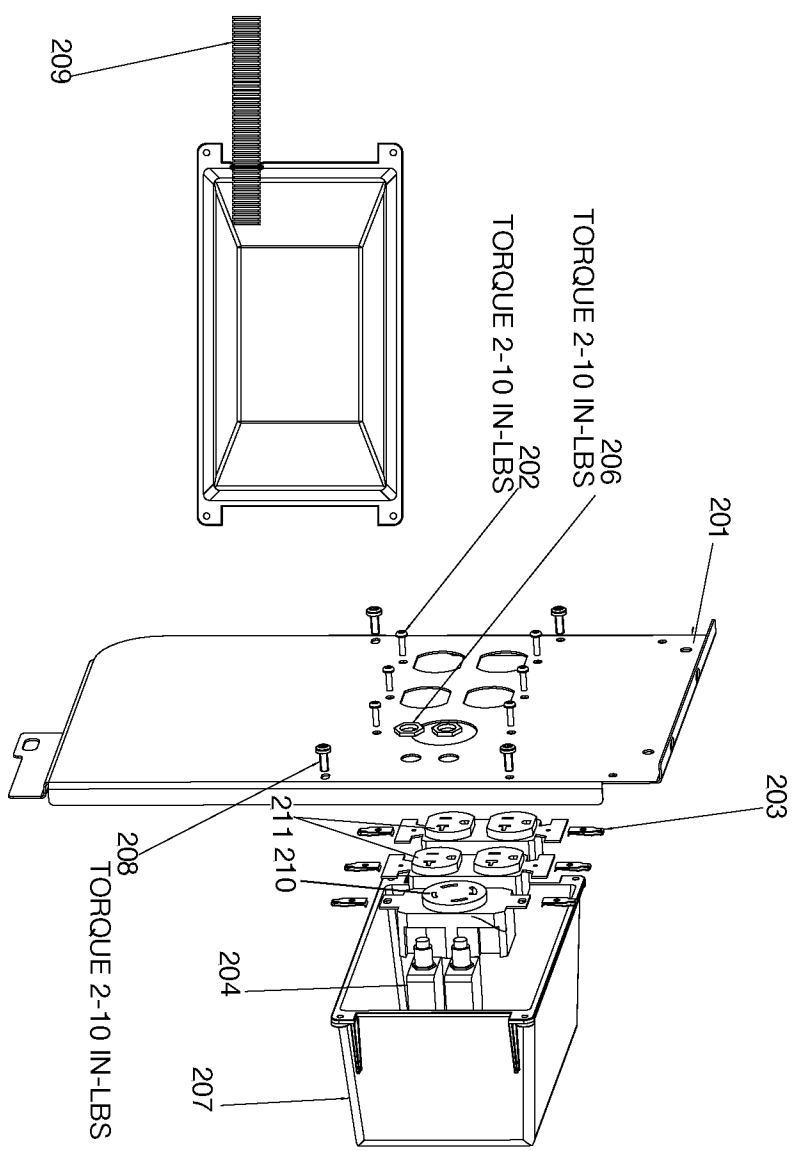
2 TORQUE 20-25 IN-LBS











Parts List for BSI550-W Type 0

Item Number	Part Number	Description	Qty Required
1	91895680	SCREW .250-20X.750 H	10
2	SSN-632	WASHER .875 OD .375	10
4	000000-00	No Longer Available	1
6	Z-GS-0795	TANK FUEL 7G SS	1
7	000000-00	No Longer Available	1
8	000000-00	No Longer Available	1
9	GS-0118	STRAP GROUND	1
10	N002562	SCREW	10
11	GS-0433	ISOLATOR	4
12	SSN-1619-ZN	WASHER LOCK EXTERNAL	10
13	SS-12-CD	SCREW .313-18X.750 H	1
14	GS-0117	LUG GROUND	1
15	GS-0033	ISOLATOR VIBRATION 1	4
16	D22311	SCREW .313-18X.875 U	10
18	SSF-553-1	SCREW #10-24X.563 TH	10
19	GS-0077	COVER END BLANK	1
20	GS-0437	DRAIN COCK	1
21	GS-0227	CLAMP FUEL .50	1
22	N103455	GROMMET	1
24	GS-0863	CAP FUEL W/GAUGE	1
25	GS-0199	BUSHING SNAP 1 OD	1
27	000000-00	No Longer Available	1
29	Z-D23686	KIT MUFFLER REPLACEM	1
30	SSF-8150	NUT .312-18 UNC HEX	10
31	Z-A14582	HOSE FUEL	1
33	SSF-621	SCREW .250-14X.625 F	10
38	D24363	GASKET MANIFOLD B&S	1

Parts List for BSI550-W Type 0

Item Number	Part Number	Description	Qty Required
39	D24362	SCREW .312-18 TORX S	10
101	GS-0076	ADAPTOR DRIVE END #6	1
102	SSN-619	WASHER .375 SPRING L	10
103	SSF-577	SCREW .375-16X1.00 H	10
104	Z-D26605	ASSY GEN 3.255 120/2	1
104	D27092	KIT SERVICE FOCUS MO	1
105	GS-0110	BOLT STATOR THRU 130	1
106	Z-D26605	ASSY GEN 3.255 120/2	1
106	D27092	KIT SERVICE FOCUS MO	1
107	SS-6506-CD	WASHER FLAT	10
108	SSF-576	NUT .313-24 HEX W/KE	1
109	000000-00	No Longer Available	1
110	Z-GS-0861	KIT ORING BEARING SU	1
112	SSF-575	NUT .250-20 HEX W/KE	10
113	GS-0748	CAPACITOR 40UF 370V	1
116	GS-0595	BRACKET CAPACITOR 2.	1
117	SSF-553-1	SCREW #10-24X.563 TH	10
121	GS-0862	O-RING ROTOR BEARING	1
202	SSF-583	SCREW #6-32X.500 PAN	10
203	SSF-584	NUT #6-32 SPEED SELF	10
204	Z-D20573	BREAKER CIRCUIT 125/	1
206	SSF-595	NUT .438-28 UNEF HEX	10
207	D25706	COVER PANEL MINI W/C	1
208	SSF-3156	SCREW #10-9X.500 THD	10
209	GS-0605	PANEL WIRE HARNESS G	1
210	GS-0455	RECEPTACLE 4 PRONG 3	1
211	GS-0019	RECEPTACLE 120V 20A	1

Parts List for BSI550-W Type 0

Item Number	Part Number	Description	Qty Required
401	SSF-3121-ZN	SCREW .313-18X1.75 H	8
402	000000-00	No Longer Available	4
403	000000-00	No Longer Available	2
404	SSF-8150	NUT .312-18 UNC HEX	12
405	000000-00	No Longer Available	2
406	000000-00	No Longer Available	4
407	D26843	KIT GENERATOR FHWK	2
408	000000-00	No Longer Available	2
409	000000-00	No Longer Available	2
410	D24175	GRIP HANDLE SQUARE 1	2
411	SSF-591	WASHER .625 PUSH NUT	1
412	000000-00	No Longer Available	1
413	GS-0213-1	SPACER AXLE	2
414	D23067	WHEEL PNEUMATIC 10IN	2
415	SSN-623	WASHER FLAT STEEL 1.	1
416	SSN-622	PIN COTTER 7/64 X 1.	1
417	D24186	BRACKET WHEEL PAINTE	2
418	SS-12-CD	SCREW .313-18X.750 H	4
419	D24177	BRACKET FOOT 10 WK	2
420	SS-655-ZN	NUT .250-20 UNC HEX	2
421	000000-00	No Longer Available	2
422	D24721	KIT ISOLATOR W/SCREW	2
423	91895680	SCREW .250-20X.750 H	6
856	D26843	KIT GENERATOR FHWK	1