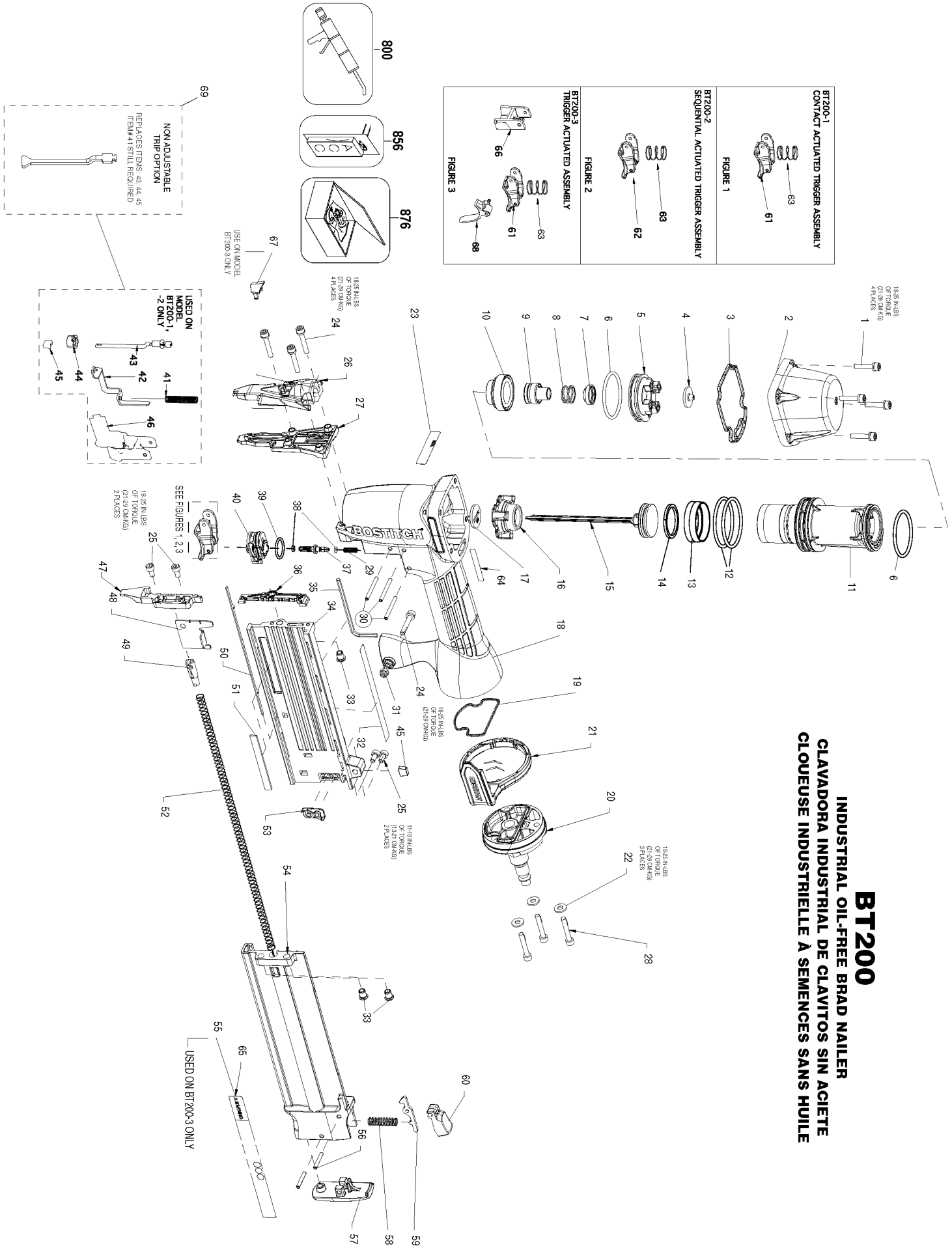


BT200

INDUSTRIAL OIL-FREE BRAD NAILER CLAVADORA INDUSTRIAL DE CLAVITOS SIN ACEITE CLOUUSE INDUSTRIELLE A SEMENCES SANS HUILE



BT200-1
CONTACT ACTUATED TRIGGER ASSEMBLY

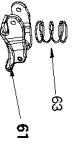


FIGURE 1

BT200-2
SEQUENTIAL ACTUATED TRIGGER ASSEMBLY

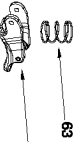


FIGURE 2

BT200-3
TRIGGER ACTUATED ASSEMBLY

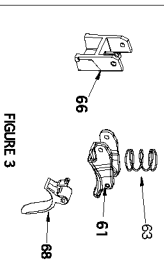


FIGURE 3

NON ADJUSTABLE TRIP OPTION
REPLACES ITEMS 43, 44, 45
ITEM #41 STILL REQUIRED

USE ON MODEL BT200-3 ONLY

USED ON MODEL BT200-1, 2 ONLY

SEE FIGURES 1, 2, 3
18.5 Nm INLBS
OF TORQUE
(21.29 DM-KG)
2 PLACES

18.5 Nm INLBS
OF TORQUE
(21.29 DM-KG)
2 PLACES

11.18 Nm INLBS
OF TORQUE
(13.0 DM-KG)
2 PLACES

15.35 Nm INLBS
OF TORQUE
(17.65 DM-KG)
3 PLACES

USED ON BT200-3 ONLY

Parts List for BT200-2 Type 0

Item Number	Part Number	Description	Qty Required
1	121051	SCREW-SHCS-M4X0.70X2	4
2	120996	CAP-FRAME	1
3	113337	SEAL-FRAME/CAP	1
4	160186	SEAL-TOP	1
5	160187	HOLD DOWN-HEADVALVE	1
6	101058	O-RING-1.487X.103	2
7	120989	SEAL-INSERT	1
8	120991	SPRING-HEADVALVE	1
9	120032	INSERT-HEADVALVE	1
10	120027	DIAPHRAM-HEAD VALVE	1
11	120028	SLEEVE-BT200	1
12	RG161210	O-RING-1.612X.103 NB	1
13	120061	SEAL-CHECK	1
14	S32109	RING-PISTON	1
15	120075	ASSEMBLY-PISTON/DRIV	1
16	171415	BUMPER	1
17	121017	GUIDE-DRIVER	1
18	121004	FRAME-OVERMOLD	1
19	121035	SEAL-FRAME END CAP	1
20	175414	ASSEMBLY-END CAP	1
21	175409	BELT HOOK KIT	1
21	173896	HOOK-BELT	1
22	PW8	WASHER-PWR-.188	3
23	000000-00	No Longer Available	1
24	121052	SCREW-SHCS-M4X0.70X2	4
25	MSC4070-8	SCREW-SHCS-M4X0.70X8	4
26	171156	COVER-TRIP	1

Parts List for BT200-2 Type 0

Item Number	Part Number	Description	Qty Required
27	175425	NOSE	1
28	105235	SCREW-SHCS M4X25	3
29	N86115	COMPRESSION SPRING	1
30	100298	PIN-SPIRAL M3X30	3
31	MHE4070-100	ELASTIC STOP NUT-M4	1
32	000000-00	No Longer Available	1
33	S32011	INSERT-M4	2
34	113608	MAGAZINE-FIXED	1
35	121036	KEY-HEXAGON 3MM	1
36	171158	CORE TIP-FIXED	1
37	121029	STEM-VALVE	1
38	MRG002514	O-RING-.098X.055	2
39	850144	O-RING-.614X.070	1
40	121005	HOUSING-VALVE	1
41	121024	SPRING-TRIP	1
42	120022	TRIP-UPPER	1
43	000000-00	No Longer Available	1
44	120024	THUMBWHEEL	1
45	120056	CONTACT FOOT-NO MAR	1
46	120020	GUIDE-ARM	1
47	171131	CORE-PLATE	1
48	113618	PUSHER	1
49	113550	SHUTTLE-PUSHER	1
50	120051	PLATE-WEAR	1
51	121010	MAGNET	1
52	121012	SPRING-PUSHER	1
53	113569	STOP-LATCH	1

Parts List for BT200-2 Type 0

Item Number	Part Number	Description	Qty Required
54	000000-00	No Longer Available	1
55	158612	LABEL-WARNING	1
56	MPP030020	PIN-SPIRAL M3X20MM	2
57	113654	BUMPER-REAR	1
58	113579	SPRING-LATCH	1
59	113567	LATCH	1
60	113568	LATCH-COVER	1
61	CNTK1	KIT-CONTACT TRIP CON	1
62	SEQ4	KIT	1
63	100387	SPRING-COMPRESSION	1
64	000000-00	No Longer Available	1
65	158613	LABEL-WARNING NO C.T	1
66	121008	STOP-TRIGGER	1
67	121013	PLUG-COVER	1
68	159884	ASSEMBLY-SECOND TRIG	1
69	171085-S	BOSTITCH ARM	1
800	100679	LUBE (1LB.CAN)	1
800	100653	LUBE (2CC)	1
876	BT200-RK	BT200 REPAIR KIT	1