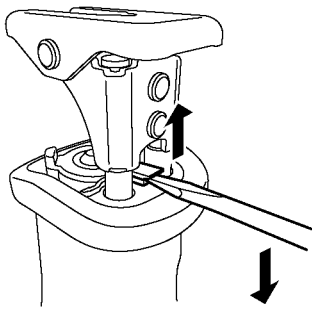
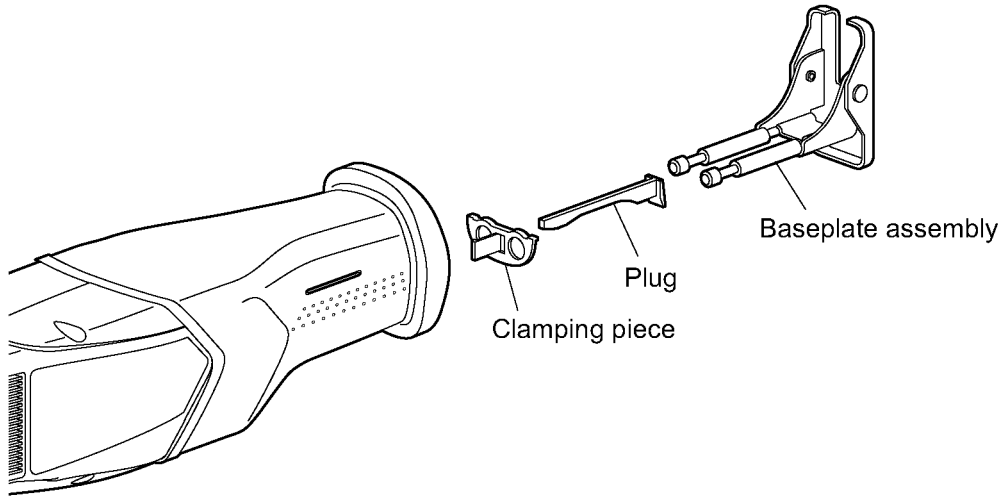


4 Disassembly and Assembly Instructions

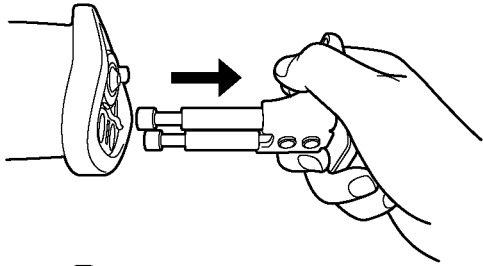
NOTE: Be sure to start disassembly after removing the blade and the battery pack.

4.1. Disassembly Instructions

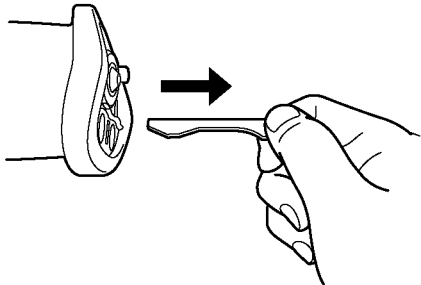
4.1.1. Remove the baseplate, plug and clamping piece.



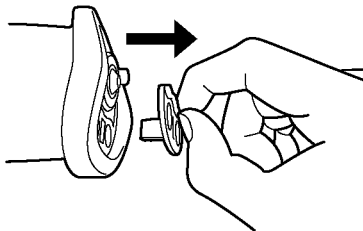
1. Insert a flathead screw driver between the main body and the plug, and push up the plug until the baseplate assembly lifts up with click.



2. And then pull out the baseplate.

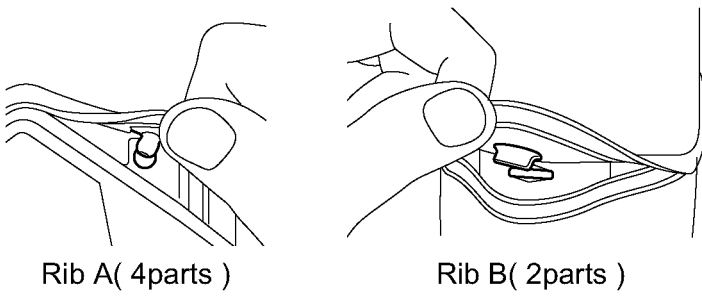
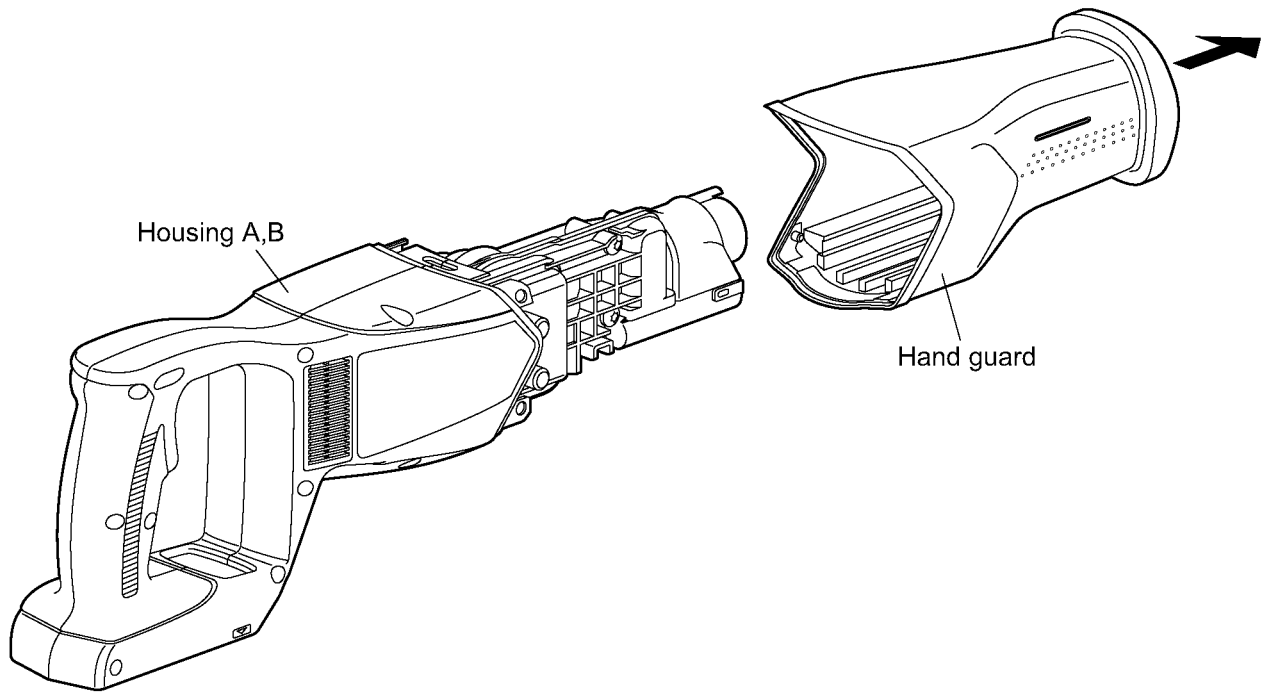


3. Pull out the plug.

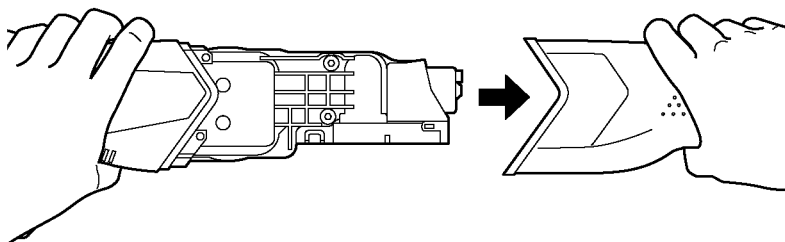
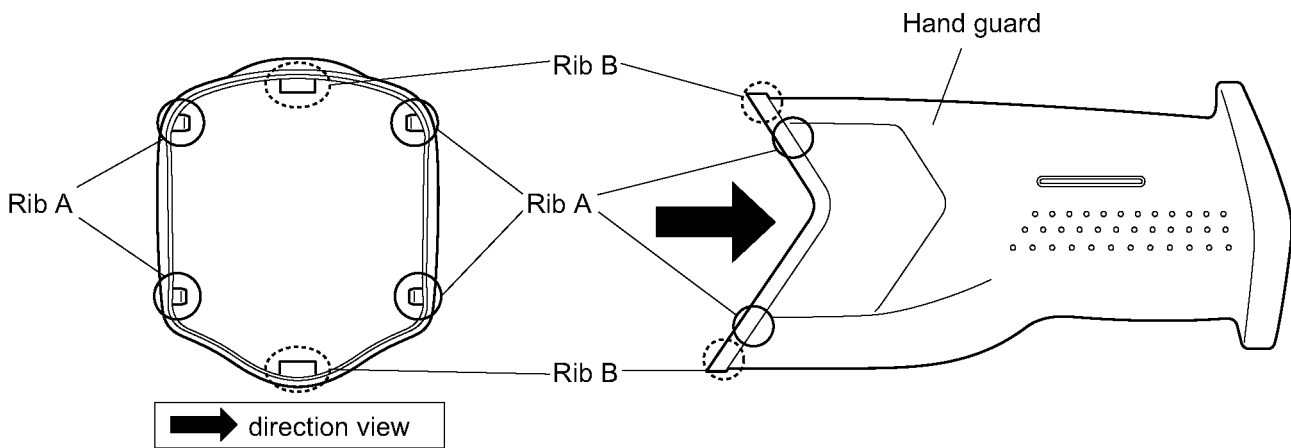


4. pull out the clamping piece holding the tab.

4.1.2. Remove the hand guard.

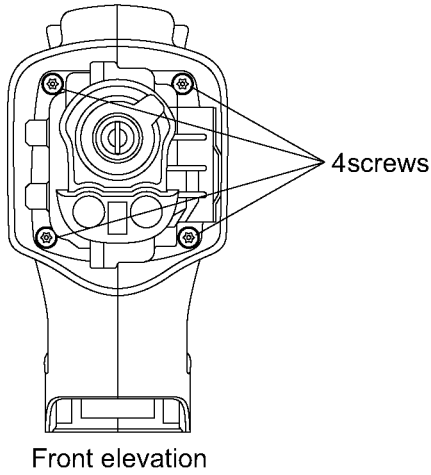


1. Remove 6 ribs of the hand guard from the housing A and B completely.

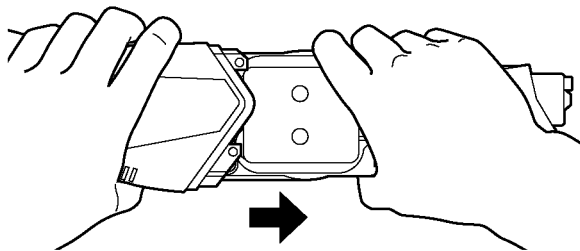


2. Pull out the hand guard strongly and gradually holding the main body firmly.

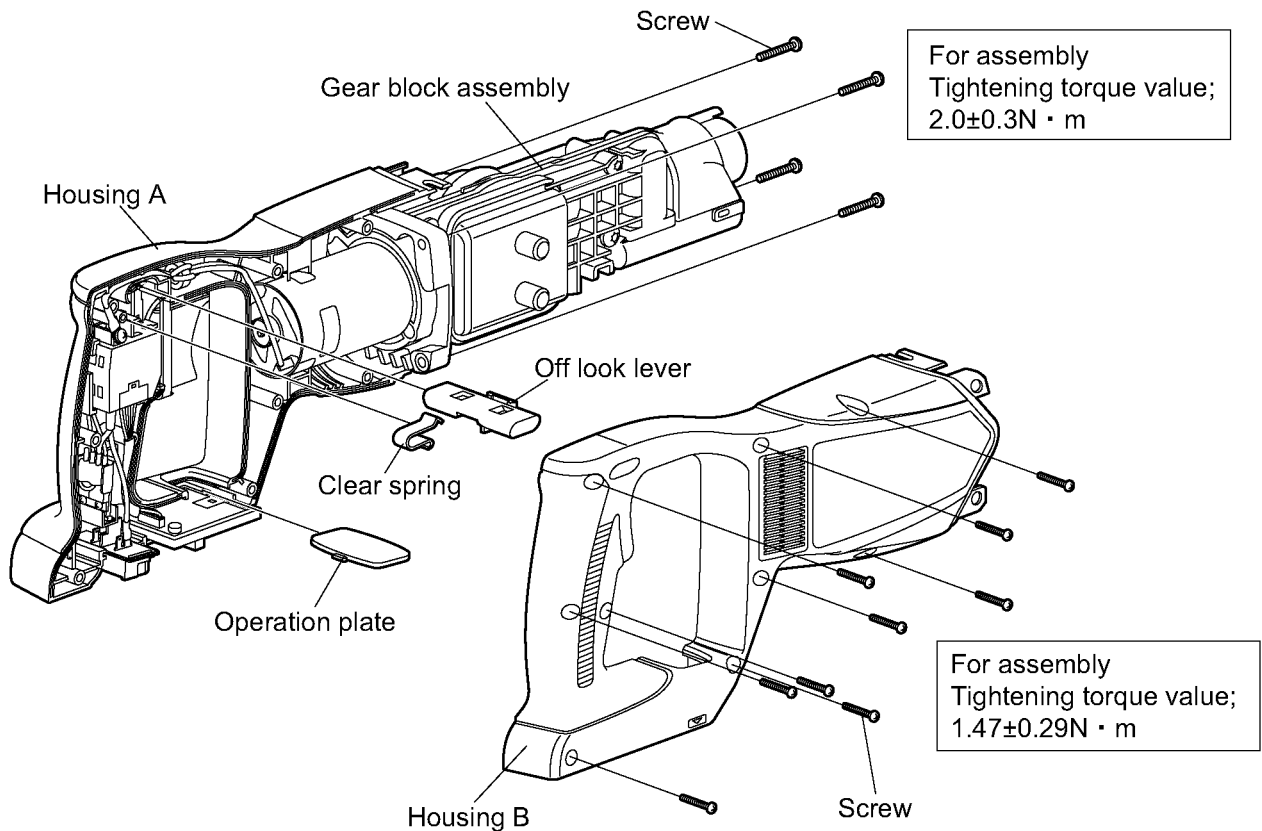
4.1.3. Remove the housing B, off lock lever and operation plate.



1. Remove 4 screws.



2. Pull the gear block assembly a little until it stops naturally.



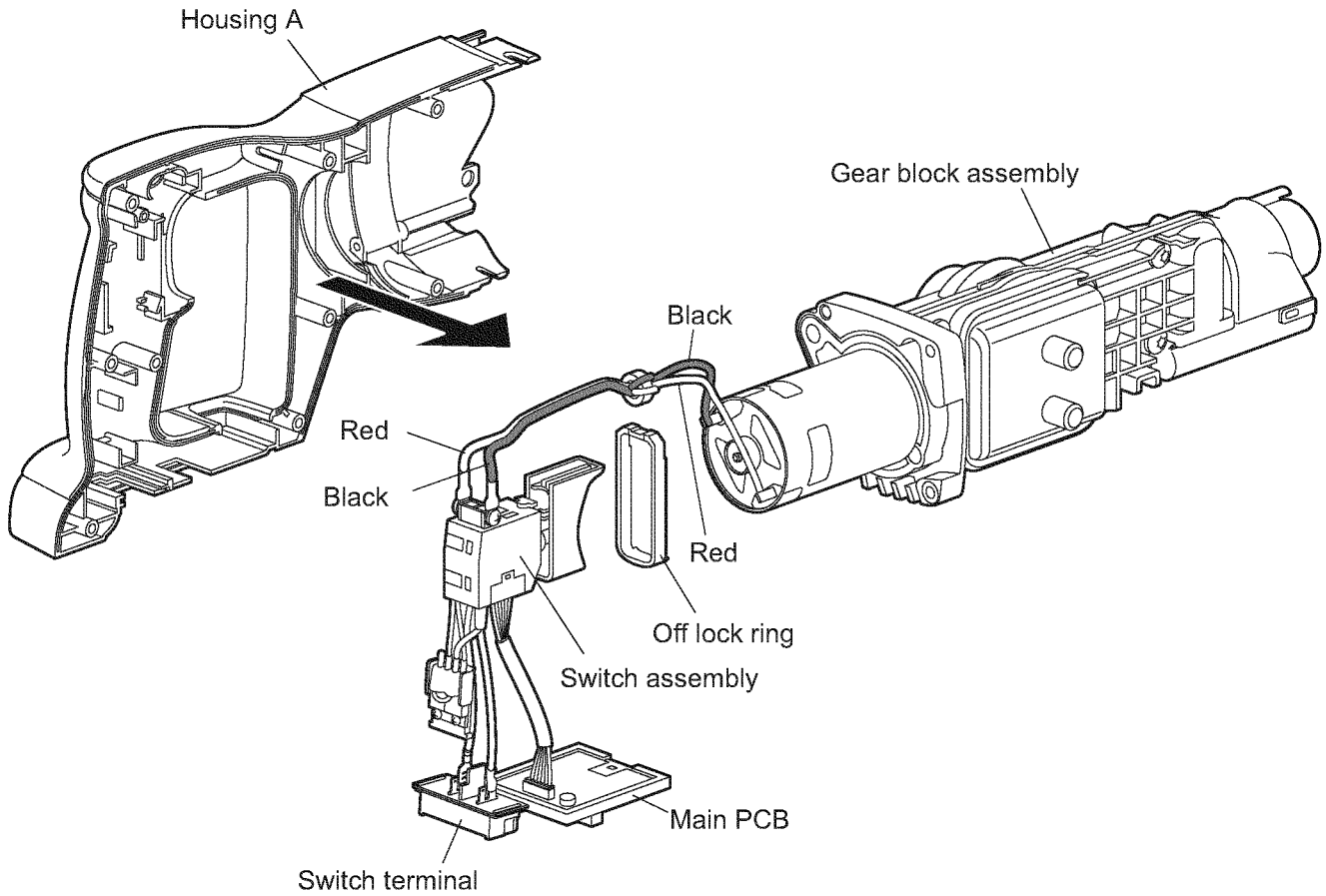
3. Remove 9 screws.

4. Remove the clear spring.

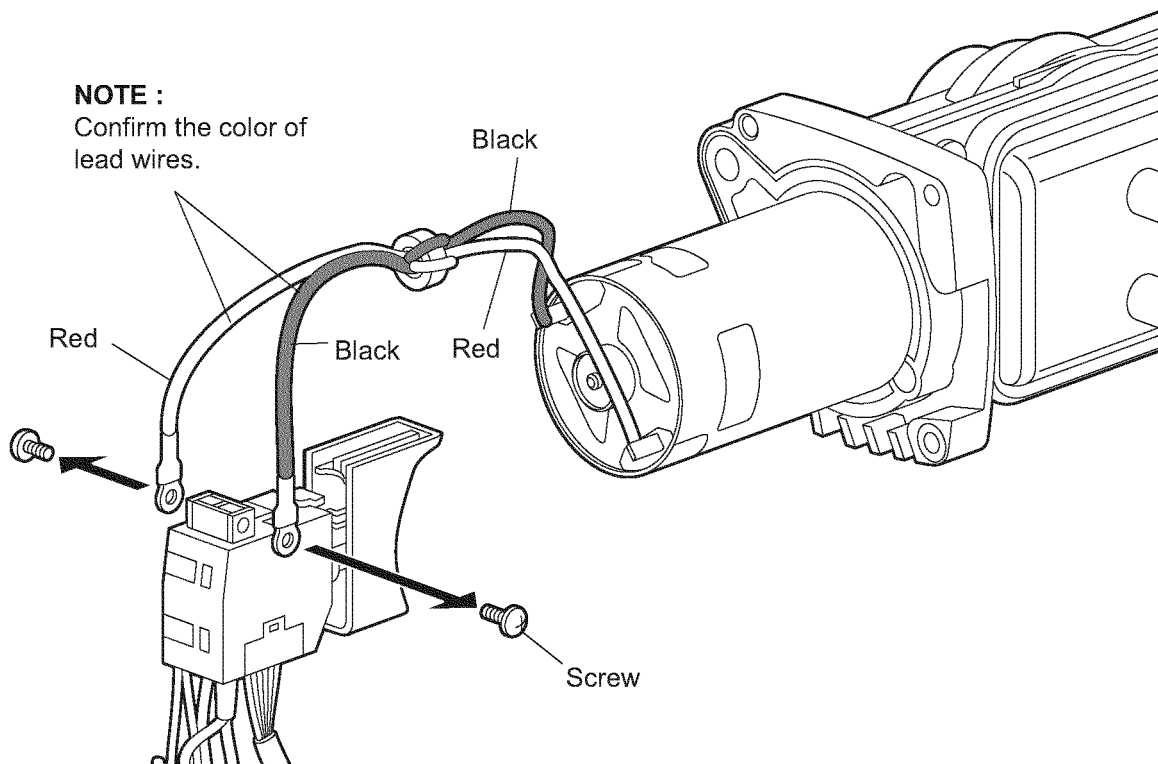
5. Remove the off lock lever.

6. Remove the operation plate.

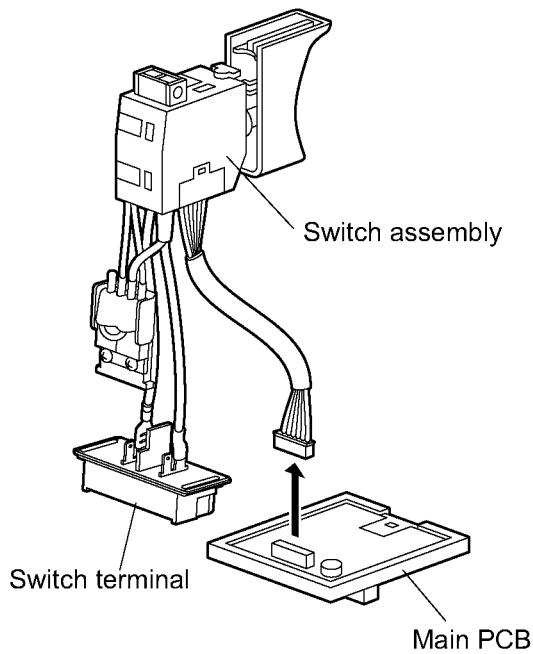
4.1.4. Remove the gear block assembly, switch assembly and main PCB.



4.1.5. Remove the motor lead wires.

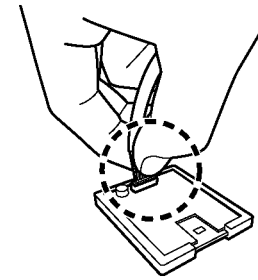


4.1.6. Remove the connector of switch assembly from the main PCB.

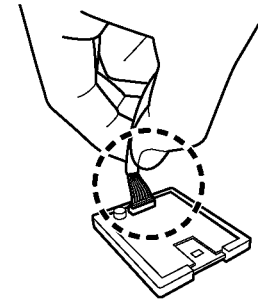


■ How to remove connectors

○ Pull a connector out holding the base of it.

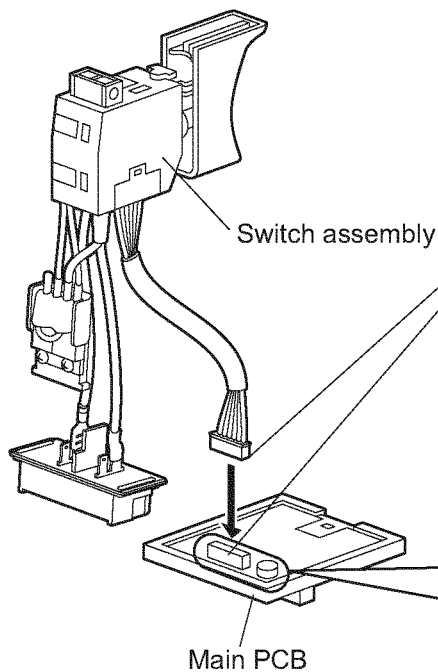


✗ Holding the lead wire makes it broken.



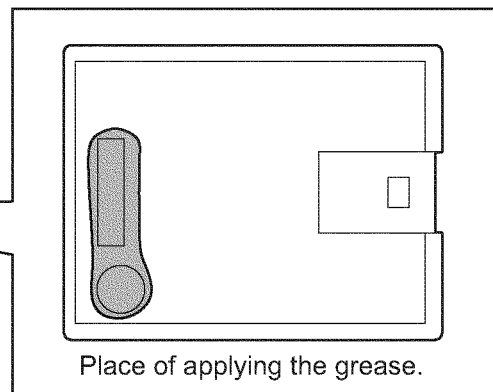
4.2. Assembly Instructions

4.2.1. Insert the connector of the switch assembly into the main PCB.

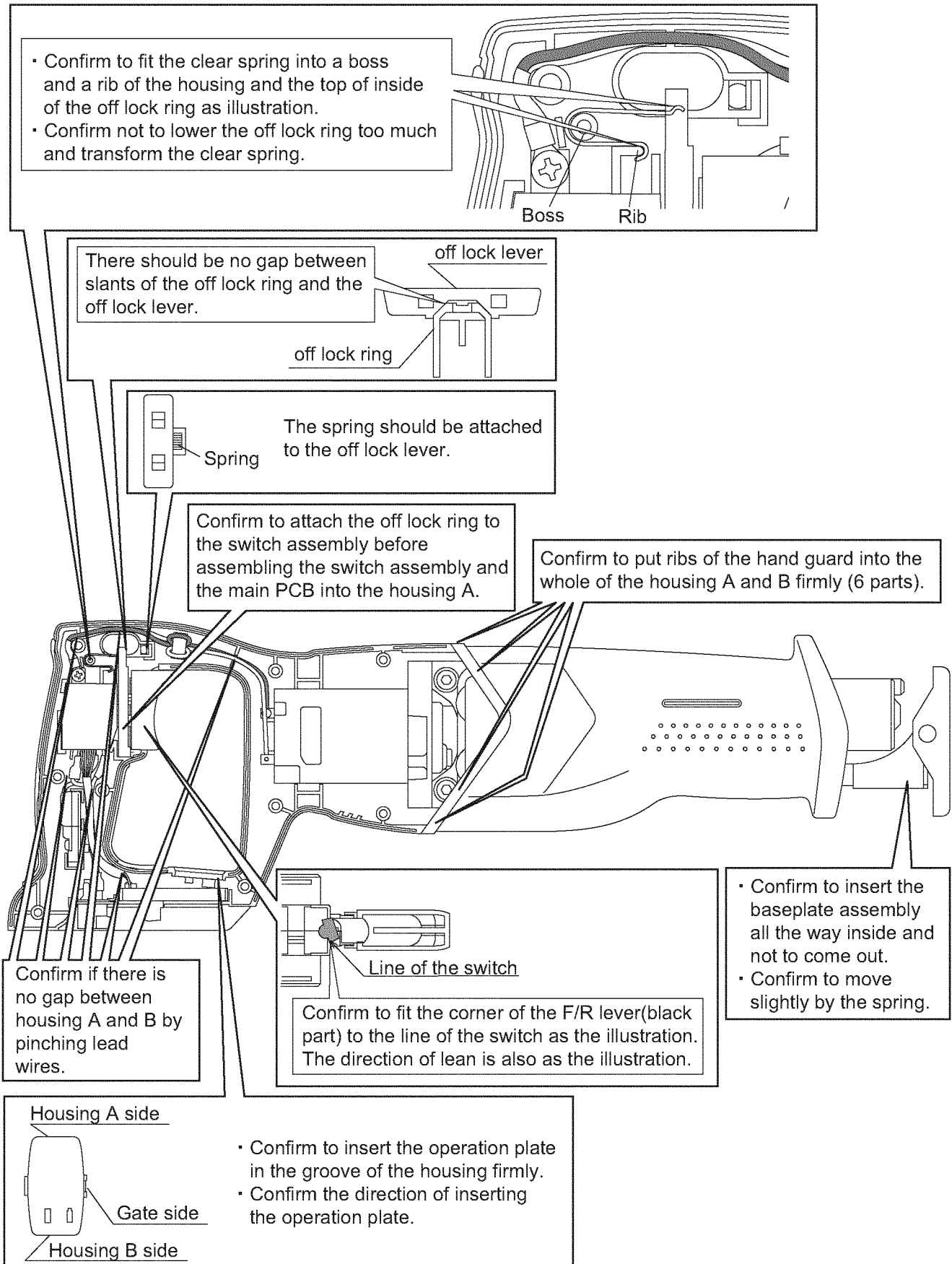


NOTE :

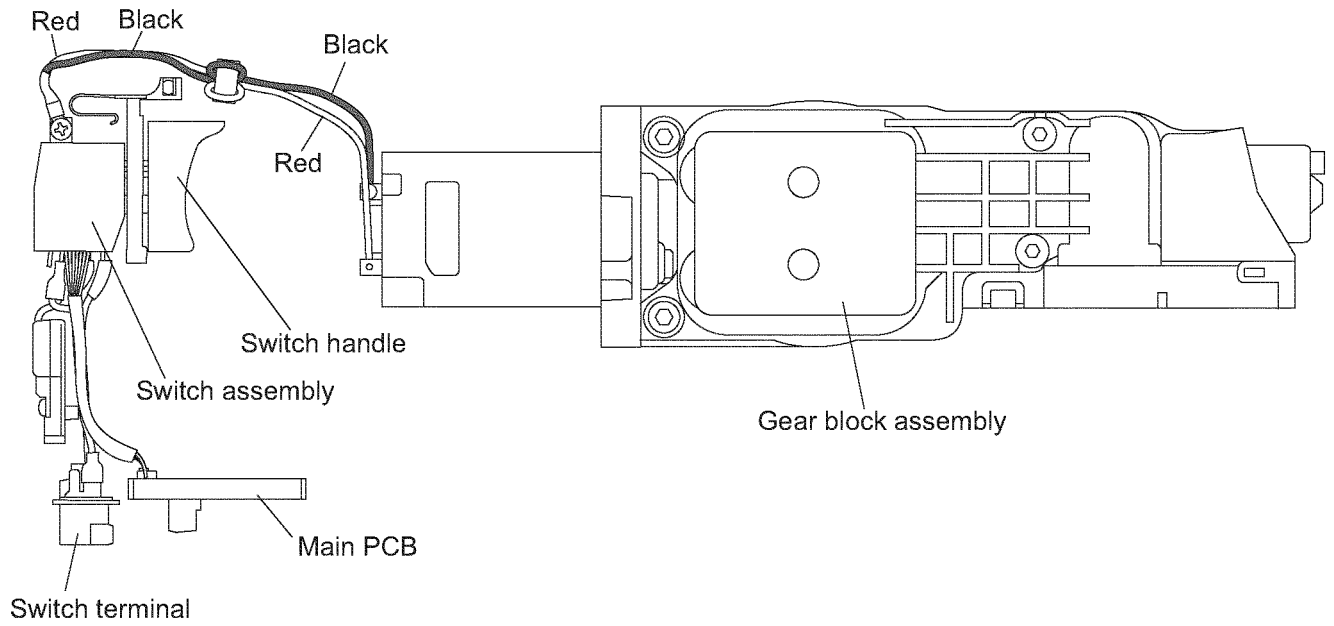
- Apply the grease around the connector of the main PCB before inserting the connector of the switch assembly into it.
- Insert the connector all the way inside firmly.



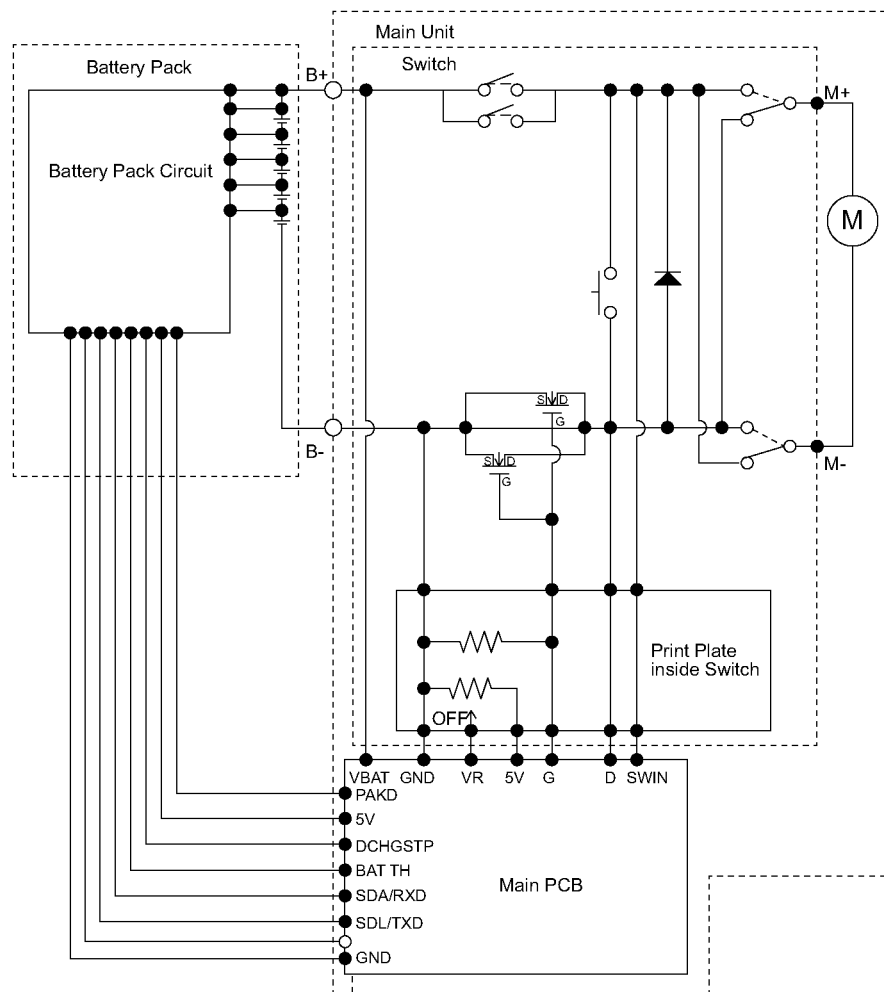
4.2.2. Caution for assembly



5 Wiring Connection Diagram

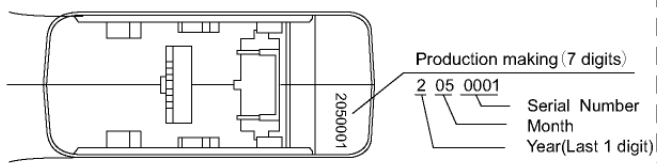
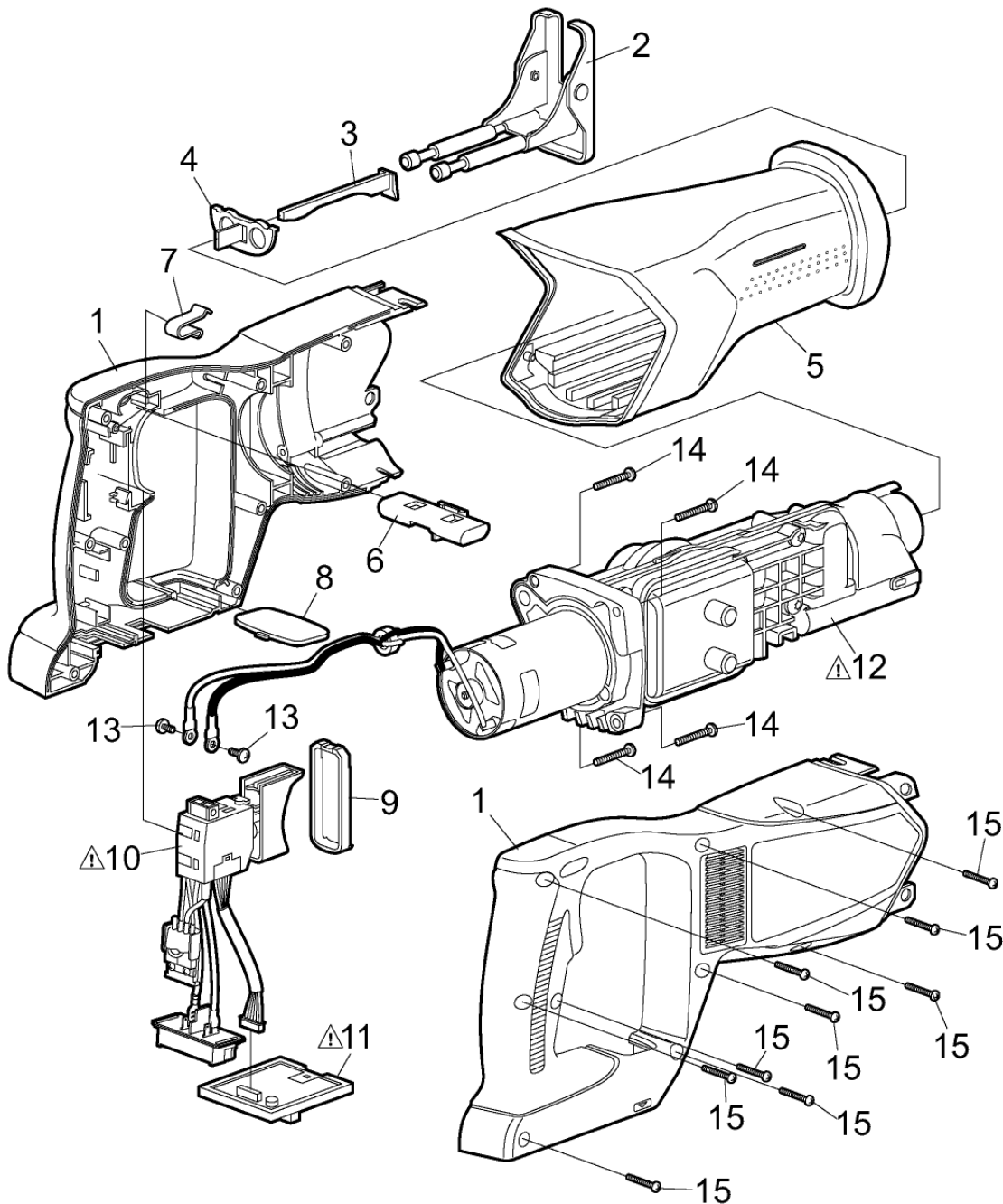


6 Schematic Diagram



+`9l d`cXYX`JJYk `UbX`FYd`UWYa YbhDUfHg`@gh

Model No. : EY45A1 Exploded View



* Battery Pack is available as an optional accessory. See the nearest sales dealer for details.
* For replacement parts of charger, see the charger service manual.
Charger complete set is available as an optional accessory. See the nearest sales dealer for details.

Model No. : EY45A1 Parts List

Safety	Ref. No.	Part No.	Part Name & Description	Q'ty	Remarks
	1	WEY45A1H3070	HOUSING AB SET	1	
	2	WEY45A1K4728	BASEPLATE ASSEMBLY	1	
	3	WEY45A1K0398	PLUG	1	
	4	WEY45A1K0208	CLAMPING PIECE	1	
	5	WEY45A1K3108	HAND GUARD	1	
	6	WEY45A1H3238	OFF LOCK LEVER	1	
	7	WEY45A1L0928	CLEAR SPRING	1	
	8	WEY45A1K3958	OPERATION PLATE ASSEMBLY	1	
	9	WEY45A1H0648	OFF LOCK RING	1	
	10	WEY45A1L2008	SWITCH ASSEMBLY	1	
	11	WEY45A1K2118	MAIN PCB ASSEMBLY	1	
	12	WEY45A1K4058	GEAR BLOCK ASSEMBLY	1	
	13	WEY6230L6027	SCREW	2	K3*6
	14	WEY45A1L6238	TORX SCREW	4	K4*30
	15	WEY45A1L6239	TORX TAPPING SCREW	9	K4*18
	-	WEY9L40R2788	BATTERY PACK COVER	1	
	-	WEY45A1K7018	TOOL CASE	1	
	-	WEY45A1K8109	OPERTING INSTRUCTIONS	1	