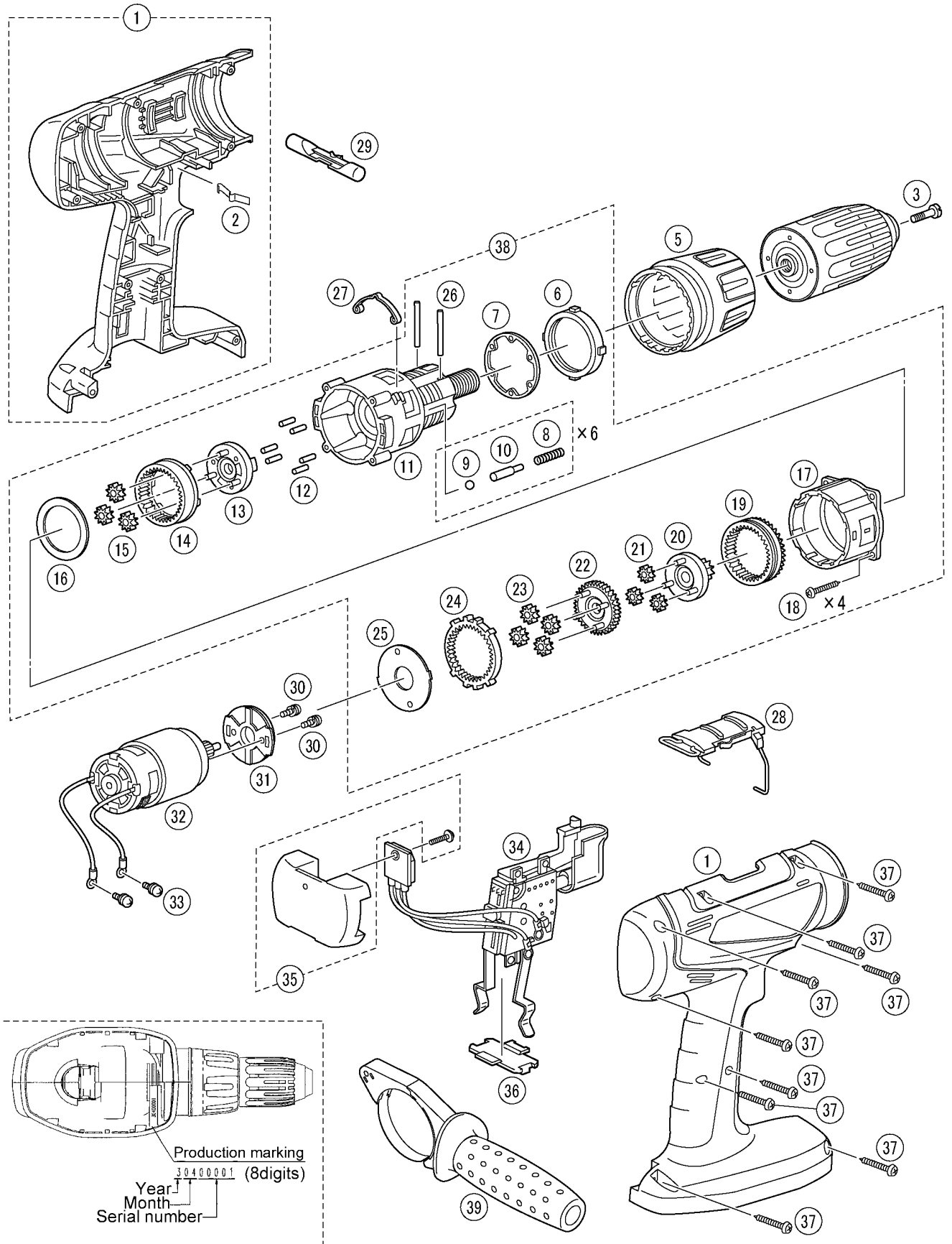


# 5 EXPLODED VIEW



# 6 REPLACEMENT PARTS LIST

## NOTE:

\*B=only available as set

\*C=available individually

Ref.No.	Part No.	Part Name & Description	Remarks	▲	Per Unit
1	WEY6950K3078	HOUSING AB SET		▲	1
2	EY6481L0177	CLICK SPRING			1
3	WEY6450L6808	CHUCK FASTENING SCREW		▲	1
5	WEY6950Y3228	CLUTCH HANDLE		▲	1
6	WEY6450L0638	ADJUSTING SCREW		▲	1
7	WEY6450L0578	CLUTCH PLATE		▲	1
8	WEY6450L0168	CLUTCH SPRING	*B (6pcs/PK)	▲	6
9	WEY6813L1927	STEEL BALL	*B (6pcs/PK) $\varnothing 5$	▲	6
10	WEY6450L0388	PIN	*B (6pcs/PK) $\varnothing 5.3 \times 20.3$	▲	6
11	WEY6950L1078	DRIVING BLOCK		▲	1
12	EY6283L0377	PIN	*B (6pcs/PK) $\varnothing 3.175 \times 7.2$		6
13	EY6901L1107	CARRIER			1
14	WEY6450L1488	RING GEAR		▲	1
15	WEY6450L1348	PLANET GEAR	*B (3pcs/PK)	▲	3
16	WEY6450L0858	THRUST PLATE		▲	1
17	WEY6450L1768	GEAR CASE		▲	1
18	EY6406K9038	TORX TAPPING SCREW	*C K3-12	▲	4
19	WEY6450L1128	CARRIER A		▲	1
20	WEY6450L1358	PLANET GEAR A	*B (3pcs/PK)	▲	3
21	WEY6200B1468	RING GEAR B		▲	1
22	WEY6950L1118	CARRIER		▲	1
23	WEY6950L1478	RING GEAR		▲	1
24	EY6230L1367	PLANET GEAR	*B (4pcs/PK)		4
25	WEY6450L0868	THRUST PLATE		▲	1
26	WEY6950L0358	PIN	*B (2pcs/PK)		2
27	WEY6450L0178	CLICK SPRING A		▲	1
28	WEY6450Y3238	H/L CHANGE HANDLE		▲	1
29	WEY6405Y3248	F/R SELECTOR HANDLE		▲	1
30	EYT184L6077	SCREW	*C K4-6		2
31	WEY6450L0028	MOTOR MOUNTING PLATE		▲	1
32	WEY6450L1008	DC MOTOR		▲	1
33	WEY6450S6028	SEMS SCREW	*C K3-5	▲	2
34	WEY6950Y2008	SWITCH		▲	1
35	EY6406L2568	HEAT SINK	with a screw	▲	1
36	EY6230L0207	DUST PREVENTIVE PLATE		▲	1
37	EY6230K9218	TORX TAPPING SCREW	*C K3-20	▲	9
38	WEY6950L1458	GEAR BOX BLOCK		▲	1
39	WEY6450K4628	SIDE HANDLE		▲	1
-	WEY6950K8108	OPERATING INSTRUCTIONS		▲	1

\*\*Battery Pack, Keyless Chuck, and Tool Case are available as an optional accessory.

See the nearest sales dealer for details.

\*\*\*For replacement parts of charger, see the charger service manual.

Charger complete set is available as an optional accessory. See the nearest sales dealer for details.