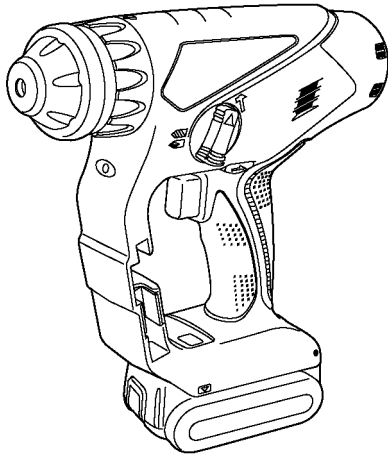


# Service Manual

Cordless Rotary Hammer Drill & Driver

Model No. **EY7840**

North America



## **⚠ WARNING**

This service information is designed for experienced repair technicians only and is not designed for use by the general public. It does not contain warnings or cautions to advise non-technical individuals of potential dangers in attempting to service a product. Products powered by electricity should be serviced or repaired only by experienced professional technicians. Any attempt to service or repair the product or products dealt with in this service information by anyone else could result in serious injury or death.

## **IMPORTANT SAFETY NOTICE**

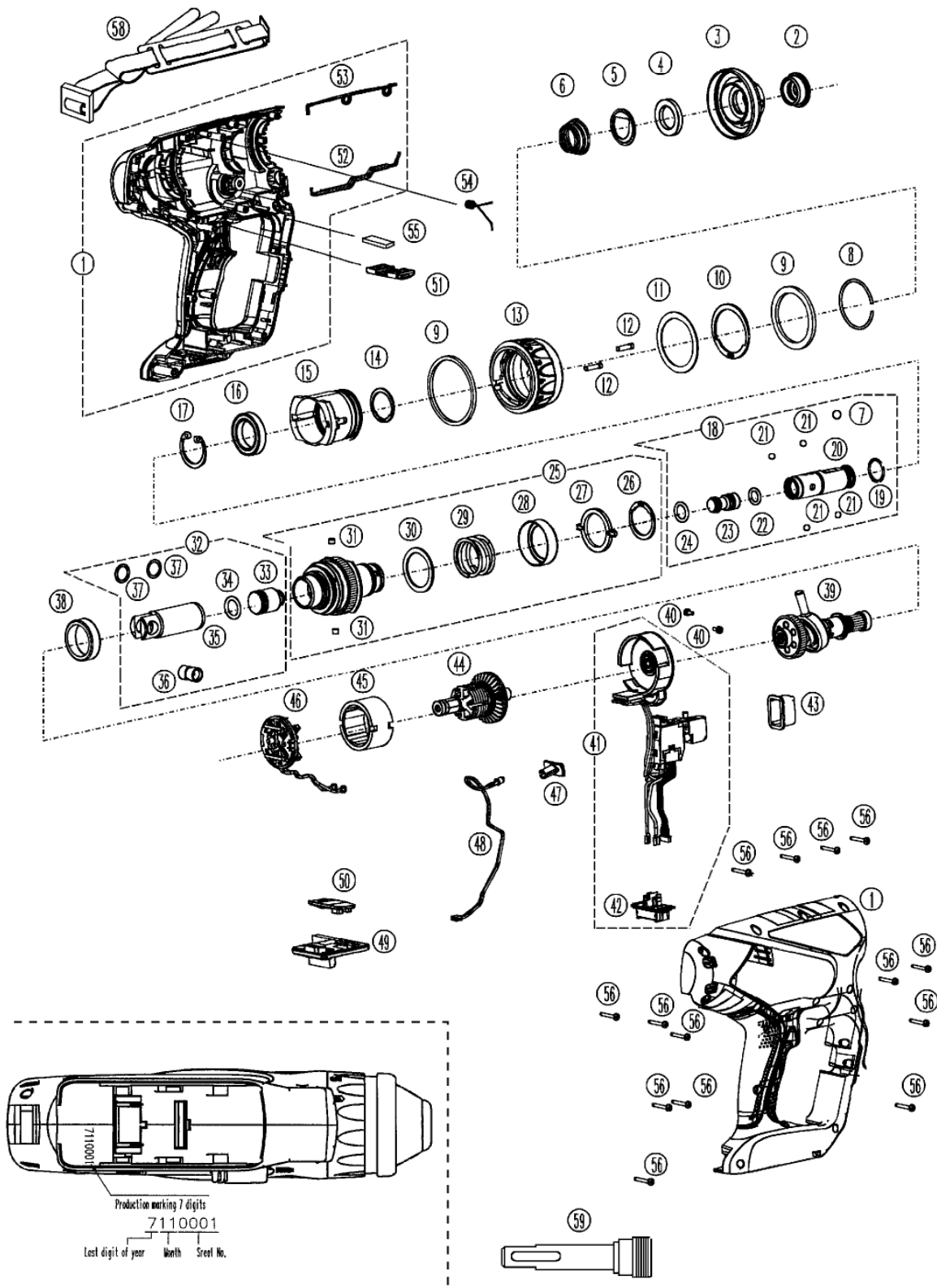
There are special components used in this equipment which are important for safety. These parts are marked by **⚠** in the Schematic Diagrams, Circuit Board Diagrams, Exploded Views and Replacement Parts List. It is essential that these critical parts should be replaced with manufacturer's specified parts to prevent shock, fire or other hazards. Do not modify the original design without permission of manufacturer.

## **TABLE OF CONTENTS**

	PAGE	PAGE
1 Warning-----	2	
2 Specifications -----	2	
3 Troubleshooting Guide-----	3	
4 Disassembly and Assembly Instructions -----	7	
5 Wiring Connection Diagram -----	12	
6 Schematic Diagram-----	13	
7 Exploded View and Replacement Parts List -----	14	

# 7 Exploded View and Replacement Parts List

Model No. : EY7840 Exploded View



## Model No. : EY7840 Parts List

Safety	Ref. No.	Part No.	Part Name & Description	Q'ty	Remarks
	1	WEY7840K3078	HOUSING AB SET	1	
	2	WEY6813H3117	CHUCK COVER	1	
	3	WEY6803K3127	CHUCK HANDLE	1	
	4	WEY6813L0427	BALL GUIDE	1	
	5	WEY6813L0437	CHUCK SPRING STRIKE PLATE	1	
	6	WEY6813L0917	CHUCK SPRING	1	
	7	WEY6813L1917	STEEL BALL	1	(φ7)
	8	WEY6803L1167	C-TYPE RING	1	
	9	WEY6803L3137	FELT	1	
	10	WEY6803L0467	SNAP RING	1	
	11	WEY6803L0857	THRUST PLATE	1	
	12	WEY6803L1707	LOCK PIN	2	(2PCS/PK)
	13	WEY7840H3227	CLUTCH HANDLE	1	
	14	WEY6813L0477	SNAP RING	1	
	15	WEY6803Y3297	CLUTCH CASE	1	
	16	WEY6813L4957	BALL BEARING	1	
	17	WEY6803L0477	SNAP RING	1	
	18	WEY6803L4067	SPINDLE ASSEMBLY	1	
	19	WEY6813L0317	O RING	1	
	20	WEY6803L0057	SPINDLE	1	
	21	WEY6813L1926	STEEL BALL	4	(φ5), (4PCS/PK)
	22	WEY6813L0327	O RING	1	
	23	WEY6803L1237	STRIKER	1	
	24	WEY6813L0347	O RING	1	
	25	WEY7840L4907	CLUTCH ASSEMBLY	1	
	26	WEY6803L0257	SNAP RING	2	(2PCS/PK)
	27	WEY6803L0087	CLICK PLATE	1	
	28	WEY6803L0017	ADJUST RING	1	
	29	WEY7840L0167	CLUTCH SPRING	1	
	30	WEY6803L0867	THRUST PLATE	1	
	31	WEY6813L0907	PIN	4	(φ5×4), (4PCS/PK)
	32	WEY7840L1247	PISTON ASSEMBLY	1	
	33	WEY6803L4627	HAMMER	1	
	34	WEY6803L0977	O RING	1	
	35	WEY6803L1987	PISTON	1	
	36	WEY7840L1257	UNIVERSAL COUPLING	1	
	37	WEY6812L0847	THRUST PLATE	2	(2PCS/PK)
	38	WEY6803L0387	NEEDLE BEARING	1	
	39	WEY6803L4057	INTERMEDIATE SHAFT ASSEMBLY	1	
	40	WEY6261B6027	SCREW	2	(K3-6)
	41	WEY7840L2007	SWITCH ASSEMBLY	1	
	42	WEY7880L2157	BATTERY TERMINAL BASE	1	
	43	WEY7840K3137	TRIGGER COVER	1	

**Model No. : EY7840 Parts List**

Safety	Ref. No.	Part No.	Part Name & Description	Q'ty	Remarks
	44	WEY7840L1467	MOTOR ROTOR ASSEMBLY	1	
	45	WEY7840L1187	MOTOR STATOR ASSEMBLY	1	
	46	WEY7840L2307	MOTOR BRUSH ASSEMBLY	1	
	47	WEY6803L2337	LED COVER	1	
	48	WEY7840L2337	LED LIGHT	1	
	49	WEY7840L2117	MAIN PCB ASSEMBLY	1	
	50	WEY7840K3338	OPERATION PANEL	1	
	51	WEY7880L3147	F/R HANDLE	1	
	52	WEY6803L3987	SEAL B	1	
	53	WEY6803L3997	SEAL A	1	
	54	WEY6803L0927	PISTON APPLYING POWER SPRING	1	
	55	WEY6803L0137	CUSHION RUBBER	1	
	56	WEY6230K9216	TORX TAPPING SCREW	14	(K3-20)
	58	WEY7880L3417	SHOULDER STRAP	1	[SH]
	59	WEY9HX403	BIT ADAPTOR	1	
	-	WEY9L40R2788	BATTERY PACK COVER	1	[SH]
	-	WEY9637K7018	TOOL CASE	1	[SH]
	-	WEY7840K8108	OPERATING INSTRUCTIONS	1	[SH]