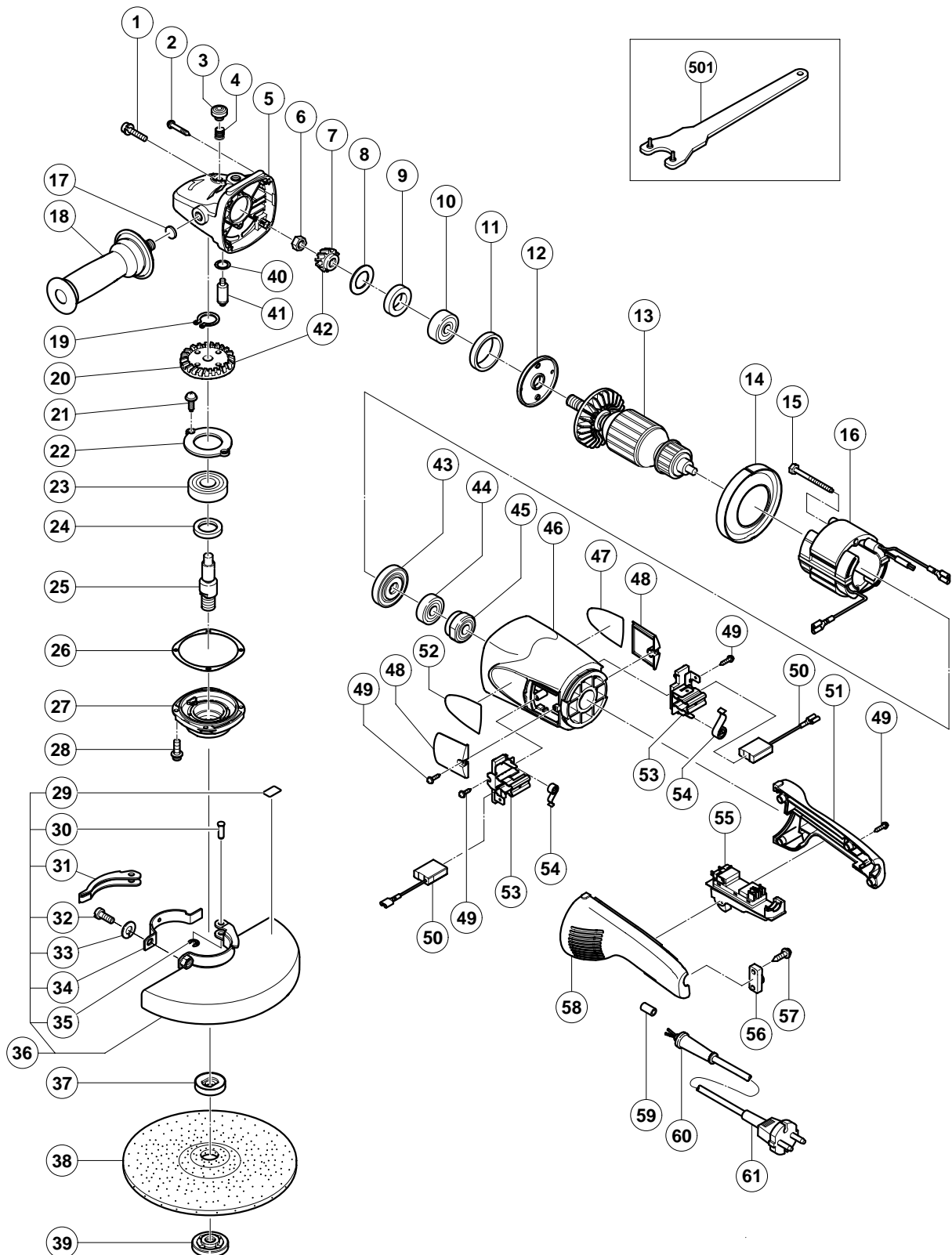


## ELECTRIC TOOL PARTS LIST

■ DISC GRINDER  
Model G 23SC3

2002・11・30  
(E1)



## PARTS

G 23SC3

ITEM NO.	CODE NO.	DESCRIPTION	NO. USED	REMARKS
1	315-636	SEAL LOCK SCREW (W/SP.WASHER) M5X14 (BLACK)	2	
2	301-654	TAPPING SCREW (W/FLANGE) D5X35	4	
3	306-888	PUSHING BUTTON	1	
4	320-219	SPRING	1	
5	320-217	GEAR COVER ASS'Y	1	INCLUD. 3, 4, 17, 40, 41
6	320-226	SPECIAL NUT M10	1	
7	320-225	PINION	1	
8	320-221	SEAL WASHER	1	
9	320-222	FELT PACKING	1	
10	630-1DD	BALL BEARING 6301DDCMPS2L	1	
11	994-208	RUBBER RING (B)	1	
12	320-220	BEARING COVER (A)	1	
* 13	360-594U	ARMATURE ASS'Y 110V-120V	1	INCLUD. 9, 10, 43, 44
* 13	360-594E	ARMATURE 220V-230V	1	
* 13	360-594F	ARMATURE 240V	1	
14	320-215	FAN GUIDE	1	
15	984-271	HEX. HD. TAPPING SCREW D5X75	2	
* 16	340-546C	STATOR 110V-120V	1	
* 16	340-546E	STATOR 220V-230V	1	
* 16	340-546F	STATOR 240V	1	
17	937-033	FELT WASHER	1	
18	321-542	SIDE HANDLE	1	
19	939-542	RETAINING RING FOR D12 SHAFT (10 PCS.)	1	
20	320-224	GEAR	1	
21	949-236	MACHINE SCREW M5X10 (10 PCS.)	2	
22	320-229	BEARING COVER (B)	1	
23	630-2DD	BALL BEARING 6302DDCMPS2L	1	
24	990-852	FELT PACKING (B)	1	
25	320-234	SPINDLE	1	
* 25	321-541	SPINDLE	1	FOR USA, CAN
26	320-228	SEAL PLATE	1	
27	320-227	PACKING GLAND	1	
28	994-192	HEX. SOCKET HD. BOLT (W/FLANGE) M5X16	4	
29	311-492	LABEL	1	
30	321-546	SET PIN	1	
31	321-545	LEVER	1	
32	306-887	BOLT M8X22	1	
33	949-457	SPRING WASHER M8 (10 PCS.)	1	
34	321-544	SET PIECE	1	
35	673-489	RETAINING RING (E-TYPE) FOR D5 SHAFT	1	
36	321-547	WHEEL GUARD ASS'Y	1	INCLUD. 29-35
* 37	937-907Z	WHEEL WASHER (A)	1	
* 37	937-922P	WHEEL WASHER (B) FOR D5/8" HOLE	1	FOR USA, CAN
* 38	316-825	D. C. WHEELS 230MM A24R (25 PCS.)	1	EXCEPT FOR GBR, EUROPE, USA
* 39	937-909Z	WHEEL NUT M14X 2	1	
* 39	937-923P	WHEEL NUT 5/8"-11UNC	1	FOR USA, CAN
40	320-218	O-RING	1	
41	306-890	LOCK PIN	1	
42	320-223	GEAR AND PINION ASS'Y	1	INCLUD. 7, 20
43	320-216	DUST SEAL	1	
44	600-0VV	BALL BEARING 6000VVCMP2L	1	

**PARTS**

G 23SC3

ITEM NO.	CODE NO.	DESCRIPTION	NO. USED	REMARKS
45	321-536	BEARING BUSHING	1	
46	321-535	HOUSING ASS'Y	1	INCLUD. 45
*	47	NAME PLATE	1	
	48	320-232 BRUSH COVER	2	
	49	305-812 TAPPING SCREW (W/FLANGE) D4X16 (BLACK)	8	
*	50	999-061 CARBON BRUSH 7X17X22.5 (1 PAIR)	2	
*	50	999-061 CARBON BRUSH 7X17X22.5 (1 PAIR)	1	FOR EUROPE, SAF
*	50	999-089 CARBON BRUSH (AUTO STOP TYPE) (1 PAIR)	1	FOR EUROPE, SAF
	51	320-231 HANDLE (B)	1	
	52	HITACHI LABEL	1	
	53	320-233 BRUSH HOLDER	2	
	54	320-245 SPRING	2	
*	55	320-239 SWITCH (2P PILLAR TYPE) W/SAFETY LOCK	1	W/LOCK
*	55	320-238 SWITCH (2P PILLAR TYPE) W/SAFETY LOCK	1	FOR GBR, FRA, HOL, ITA
*	55	321-540 SWITCH (2P PILLER TYPE) W/SAFETY LOCK	1	W/LOCK FOR USA, CAN
	56	960-266 CORD CLIP	1	
	57	984-750 TAPPING SCREW (W/FLANGE) D4X16	2	
	58	320-230 HANDLE (A)	1	
*	59	981-373 TUBE (D)	2	FOR CORD
*	60	958-049 CORD ARMOR D8.2	1	
*	60	940-778 CORD ARMOR D10.7	1	
*	61	500-214Z CORD	1	(CORD ARMOR D10.7)
*	61	500-234Z CORD	1	(CORD ARMOR D10.7) FOR INA
*	61	500-245Z CORD	1	(CORD ARMOR D10.7) FOR SYR
*	61	500-423Z CORD	1	(CORD ARMOR D8.2) FOR SIN, KUW
*	61	500-435Z CORD	1	(CORD ARMOR D8.2) FOR HKG
*	61	500-446Z CORD	1	(CORD ARMOR D10.7) FOR GBR (230V)
*	61	321-539 CORD	1	(CORD ARMOR D10.7) FOR GBR (110V)
*	61	321-537 CORD	1	(CORD ARMOR D10.7) FOR EUROPE, SAF
*	61	321-538 CORD	1	(CORD ARMOR D10.7) FOR USA, CAN

**STANDARD ACCESSORIES**

G 23SC3

ITEM NO.	CODE NO.	DESCRIPTION	NO. USED	REMARKS
501	937-913Z	WRENCH	1	

**OPTIONAL ACCESSORIES**

ITEM NO.	CODE NO.	DESCRIPTION	NO. USED	REMARKS
601	310-337	SUPER WASHER	1	
* 602	937-984Z	WHEEL GUARD	1	FOR USA, CAN