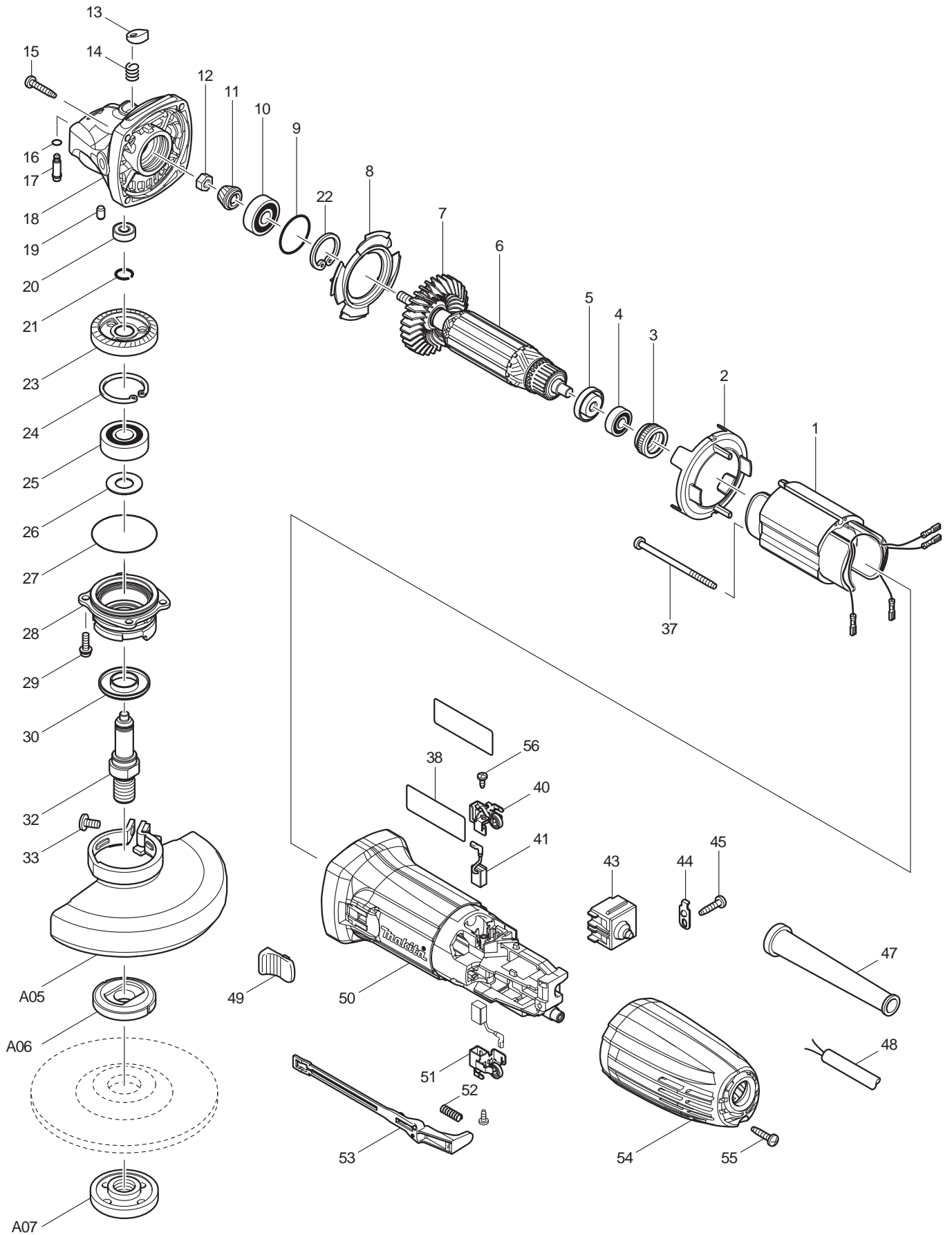




09 - 2010
GA5030K
5" ANGLE GRINDER



| Item No | Type | Ref | Ref Part No | Description | Qty | Unit |
|---------|------|-----|-------------|--|-----|------|
| 1 | 1 | | 623531-8 | FIELD 115V | 1 | PC. |
| | 2 | | 635111-8 | FIELD 115V | 1 | PC. |
| 2 | | | 450796-7 | BAFFLE PLATE | 1 | PC. |
| 3 | | | 421868-5 | LABYRINTH RUBBER RING 19 | 1 | PC. |
| 4 | | | 210034-7 | BALL BEARING 607LLB | 1 | PC. |
| 5 | | | 681636-0 | INSULATION WASHER | 1 | PC. |
| 6 | | | 517646-0 | ARMATURE ASS'Y 115V | 1 | PC. |
| 6 | | | | Item No. 4, 5, 7 | 1 | PC. |
| 7 | 1 | | 240107-2 | FAN 56 | 1 | PC. |
| | 2 | | 240139-9 | FAN 56 | 1 | PC. |
| 8 | | | 413126-3 | GUIDE PLATE | 1 | PC. |
| 9 | | | 213445-5 | O-RING 26 | 1 | PC. |
| 10 | | | 211092-6 | BALL BEARING 629DDW | 1 | PC. |
| 11 | | | 227545-5 | SPIRAL BEVEL GEAR 10 | 1 | PC. |
| 12 | | | 252186-8 | HEX. NUT M6 | 1 | PC. |
| 13 | | | 417771-6 | PIN CAP | 1 | PC. |
| 14 | | | 234057-1 | COMPRESSION SPRING 8 | 1 | PC. |
| 15 | | | 266324-6 | TAPPING SCREW 4X22 | 4 | PC. |
| 16 | | | 213032-0 | O RING 4 (OLD# 213960-9) | 1 | PC. |
| 17 | | | 256510-7 | SHOULDER PIN 4 | 1 | PC. |
| 18 | | | 318335-8 | GEAR HOUSING | 1 | PC. |
| 19 | | | 263002-9 | RUBBER PIN 4 | 1 | PC. |
| 20 | | | 210033-9 | BALL BEARING 696ZZ | 1 | PC. |
| 21 | | | 233950-6 | RING SPRING 11 | 1 | PC. |
| 22 | | | 962105-3 | RETAINING RING R-26 | 1 | PC. |
| 23 | | | 227546-3 | SPIRAL BEVEL GEAR 37 | 1 | PC. |
| 24 | | | 962151-6 | RETAINING RING R-32 | 1 | PC. |
| 25 | | | 211129-9 | BALL BEARING 6201DDW | 1 | PC. |
| 26 | | | 267113-2 | FLAT WASHER 12 | 1 | PC. |
| 27 | | | 213561-3 | O RING 42 | 1 | PC. |
| 28 | | | 318336-6 | BEARING BOX | 1 | PC. |
| 29 | | | 265099-4 | PAN HEAD SCREW M4X14 | 4 | PC. |
| 30 | | | 345464-4 | LABYRINTH RING | 1 | PC. |
| 32 | | | 324955-8 | SPINDLE A | 1 | PC. |
| 33 | | | 265180-1 | PAN HEAD SCREW M5X16 | 1 | PC. |
| 37 | | | 266325-4 | TAPPING SCREW 4X70 | 2 | PC. |
| 38 | | | 866062-6 | GA5030 NAME PLATE | 1 | PC. |
| 40 | | | 643839-4 | BRUSH HOLDER 6X9 | 1 | PC. |
| 41 | 1 | | 194721-5 | CARBON BRUSH CB-458,2PC/SET (W/O ORIGIN) | 1 | SET |
| | 2 | | 195025-8 | CARBON BRUSH CB-458 2PC/SET (W/ ORIGIN) | 1 | SET |
| 43 | 1 | | 650560-8 | SWITCH DPX-2110-R | 1 | PC. |
| | 2 | | 650621-4 | SWITCH PS10 | 1 | PC. |
| 44 | | | 687681-3 | STRAIN RELIEF | 1 | PC. |
| 45 | | | 266326-2 | TAPPING SCREW 4X18 | 1 | PC. |
| 47 | | | 682559-5 | CORD GUARD 8 | 1 | PC. |
| 48 | | | 664891-9 | CORD WITH PLUG 2P-18-2.5M SJ | 1 | PC. |
| 49 | | | 419566-3 | SWITCH KNOB | 1 | PC. |
| 50 | | | 158890-6 | MOTOR HOUSING COMPLETE | 1 | PC. |
| 50 | | | 810341-4 | CAUTION LABEL | 1 | PC. |
| 50 | | | 810452-5 | CAUTION LABEL | 1 | PC. |
| 51 | | | 643839-4 | BRUSH HOLDER 6X9 | 1 | PC. |
| 52 | | | 233121-5 | COMPRESSION SPRING 4 | 1 | PC. |
| 53 | | | 450797-5 | SWITCH LEVER | 1 | PC. |

| Item No | Type | Ref | Ref Part No | Description | Qty | Unit |
|---------|------|-----|-------------|------------------------------------|-----|------|
| 54 | | | 450794-1 | REAR COVER | 1 | PC. |
| 55 | | | 266326-2 | TAPPING SCREW 4X18 | 1 | PC. |
| 56 | 2 | | 266492-5 | TAPPING SCREW 3X8 (OLD# 265954-0) | 2 | PC. |
| 100 | | | 652044-2 | +BIND SCREW M 3.5X5.0 (FOR SWITCH) | 2 | PC. |
| 101 | | | 652263-0 | CLAMP WASHER (FOR SWITCH) | 2 | PC. |

ACCESSORIES

- See catalogue or visit www.makita.ca for more optional accessories -

| | | | | | | |
|-----|---|------|-------------------------|--|---|-----|
| A01 | | | 153504-2 | GRIP 36 COMPLETE | 1 | PC. |
| A02 | | | 782424-9 | LOCK NUT WRENCH 28 | 1 | PC. |
| A03 | | | 824736-5 | PLASTIC CARRYING CASE | 1 | PC. |
| | | INC. | 182935-8 | SLIDE LATCH (R.L) SET | 1 | SET |
| A04 | | | 741407-B | 5" DEPRESSED CENTER WHEEL A24P | 1 | PC. |
| A05 | 1 | | 135240-2 | WHEEL COVER ASS'Y F/5" | 1 | PC. |
| | | | | Item No. 33 | 1 | PC. |
| | 2 | | 122887-1 | * WHEEL COVER 125K ASS'Y F/5" | 1 | PC. |
| | | | | * Item No. 33 | 1 | PC. |
| | 3 | | 123099-9 | * WHEEL COVER 125AK ASS'Y F/5" | 1 | PC. |
| | | | | * Item No. 33 | | |
| | | | 213009-5 | O RING 4 | 1 | PC. |
| A06 | | | 224399-1 | INNER FLANGE 45 | 1 | PC. |
| A07 | | | 224568-4 | LOCK NUT 5/8-45 | 1 | PC. |
| A08 | | | 162258-0 | VIBRATION PROOF GRIP F/4-1/2" - 6", BULK | 1 | PC. |
| | | | 194514-0 | VIBRATION PROOF GRIP F/4-1/2" - 6", PKG | 1 | PC. |
| A10 | | | 193048-0 | SANDING LOCK NUT 5/8-48 | 1 | PC. |
| A11 | | | 743015-1 | RUBBER PAD F/5" | 1 | PC. |
| A12 | | | 196845-3 | TUCKPOINTING DUST GUARD ATTACHMENT | 1 | PC. |
| A13 | | | ----- | 4-1/2" - 5" DIAMOND TUCKPOINT BLADES | | |
| A14 | | | B-38532 | 5" 2IN1 ABRASIVE DISC A36T | 1 | PC. |

SERVICE CHANGES

1. Changes on Wheel Cover Assembly

(TI#A5003)

| Item No. | Description | Type 2 | Type3 |
|----------|---|----------|----------|
| A05 | Wheel Cover 125K Assy > Wheel Cover 125AK Assy | 122887-1 | 123099-9 |

