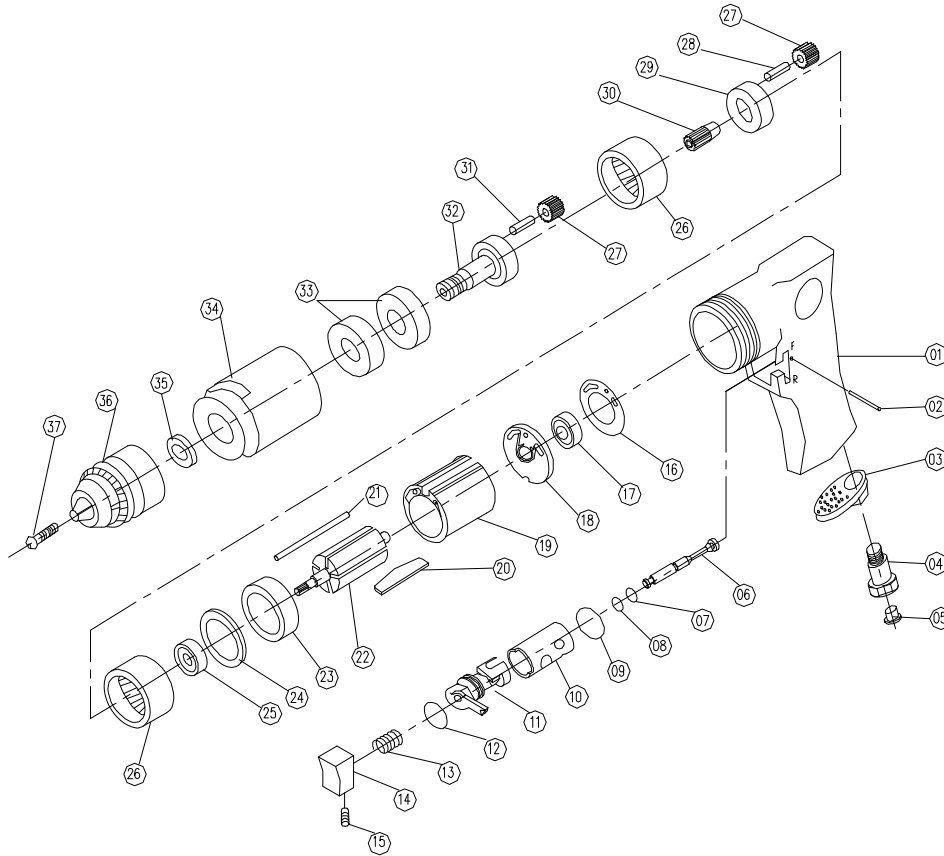




## Parts List for JSM-704A, 1/2-inch Reversible Air Drill



Index	Part No.	Description	Qty.
1	JSM705A-01	Housing	1
2	JSM705A-02	Spring Pin, Ø3 x 24L	1
3	JSM705A-03	Exhaust Deflector	1
4	JSM705A-04	Air Inlet	1
5	JSM705A-05	Dust Guard Cover	1
6	JSM705A-06	Pin	1
7	JSM705A-07	O-Ring, Ø4 x 2L	1
8	JSM705A-08	O-Ring, Ø4 x 1.1L	1
9	JSM705A-09	O-Ring, Ø12 x 3L	1
10	JSM705A-10	Bushing	1
11	JSM705A-11	Reverse Lever	1
12	JSM705A-12	O-Ring, Ø11.5 x 1.8L	1
13	JSM705A-13	Spring	1
14	JSM705A-14	Trigger	1
15	JSM705A-15	Set Screw, M4 x 8	1
16	JSM705A-16	Sealing Washer	1
17	BB-626ZZ	Bearing 626ZZ	1
18	JSM705A-18	Cylinder Cap	1
19	JSM705A-19	Cylinder	1
20	JSM705A-20	Rotor Vane	5

Index	Part No.	Description	Qty.
21	JSM705A-21	Steel Wire, Ø2 x 6L	1
22	JSM705A-22	Rotor	1
23	JSM705A-23	Front Plate	1
24	JSM705A-24	Washer	1
25	BB-6000Z	Bearing 6000Z	1
26	JSM705A-25	Gear Wheel	2
27	JSM705A-26	Planet Gear	6
28	JSM705A-27	Planet Gear Pin, Ø1.5 x 4L	3
29	JSM704A-29	Gear Shaft I	1
30	JSM704A-30	Gear Wheel Pin	1
31	JSM704A-31	Planet Gear Pin	3
32	JSM704A-32	Gear Shaft II	1
33	BB-6201Z	Bearing 6201Z	2
34	JSM705A-30	Clamp Nut	1
35	JSM705A-31	Washer	1
36	JSM704A-36	Chuck, 1/2"	1
37	JSM705A-33	Screw, M5 x 16	1
38	JSM704A-38	Chuck Key 1/2" (not shown)	1
	JSM704-RB	Rebuild Kit (index #20,22,36)	1

### WALTER MEIER (Manufacturing) Inc.

427 New Sanford Road  
 LaVergne, Tennessee 37086  
 Ph.: 800-274-6848  
 www.waltermeier.com

### Part No. M-JSM-704A

Revision A 03/2011

Copyright © 2011 Walter Meier (Manufacturing) Inc.