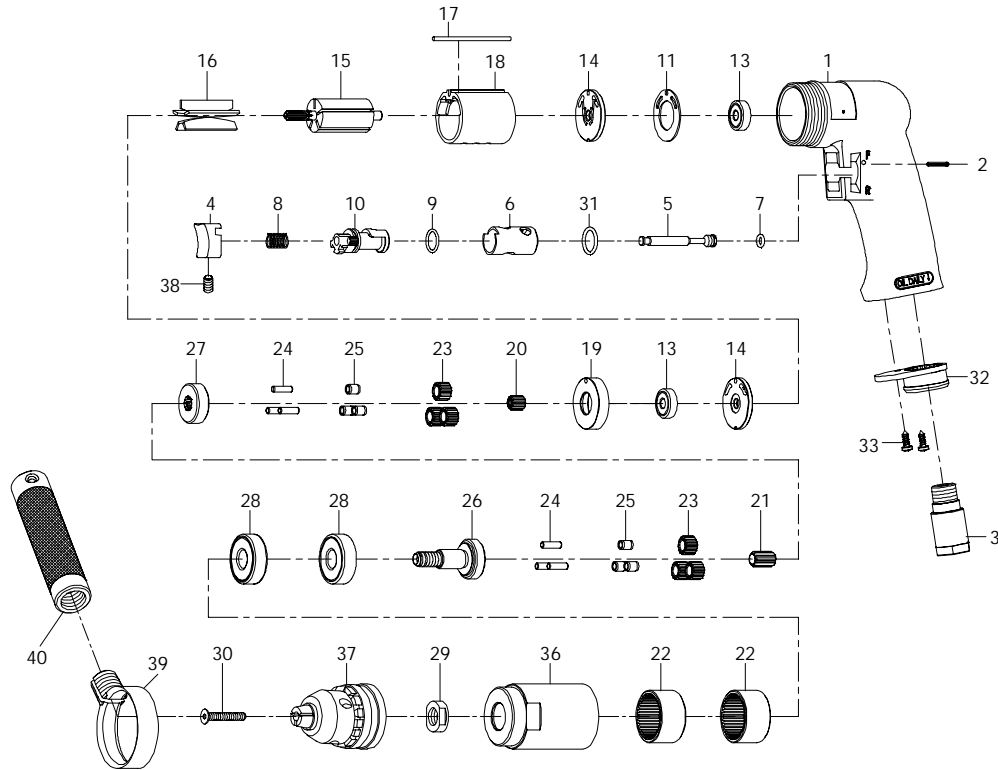




## Parts List for JSM-724, 1/2-inch Reversible Air Drill



Index	Part No.	Description	Qty.
1	SM-72401	Motor Housing	1
2	80202	Spring Pin, Ø2.5 x 24L	1
3	70103	Air Inlet	1
4	70104	Trigger	1
5	80205	Valve Stem	1
6	80206	Reverse Bushing	1
7	70107	O-Ring, Ø4.8 x 1.9	1
8	70108	Spring	1
9	80209	O-Ring, Ø12 x 1.6	1
10	80210	Reverse Lever	1
11	80211	Motor Gasket	1
13	BB-626ZZ	Ball Bearing, 626ZZ	2
14	80214	End Plate	2
15	80215	Rotor	1
16	80216	Rotor Vane	5
17	80217-13	Spring Pin, Ø2.5 x 55L	1
18	80218-22	Cylinder	1
19	80219	Spacer	1
20	JSM-72420	Pinion Gear	1

Index	Part No.	Description	Qty.
21	SM-70421	Center Gear	1
22	80222	Internal Gear	2
23	SM-70423	Planet Gear	6
24	30124	Pin, Ø4 x 13.8L	6
25	SM-70425	Bushing	6
26	SM-70426	Work Spindle	1
27	SM-70427	Reduction Spindle	1
28	BB-6201Z	Ball Bearing, 6201Z	2
29	72529	Chuck Spacer	1
30	SM-70430	Chuck Screw, M5 x 30	1
31	80247	O-Ring, Ø13.8 x 2	1
32	70110NPN	Exhaust Diffuser	1
33	40309	Screw, TS2.9	2
36	SM-70436	Clamp Nut	1
37	SM-70437	Keyed Chuck, 1/2"	1
38	SM-70438	Set Screw, M4 x 8L	1
39	SM-70439	Retainer	1
40	70340	Handle	1
41	SM-70437K	Chuck Key, 1/2" (not shown)	1

RPK-724 ..... Repair Kit (contains index # 7, 9, 16, 31 and 38)

RBK-724 ..... Rebuild Kit (contains index # 11, 18, 20, 23 and 25)

### WALTER MEIER (Manufacturing) Inc.

427 New Sanford Road  
 LaVergne, Tennessee 37086  
 Ph.: 800-274-6848  
 www.waltermeier.com

**Part No. M-JSM-724**  
 Revision B 06/2010

Copyright © 2010 Walter Meier (Manufacturing) Inc.