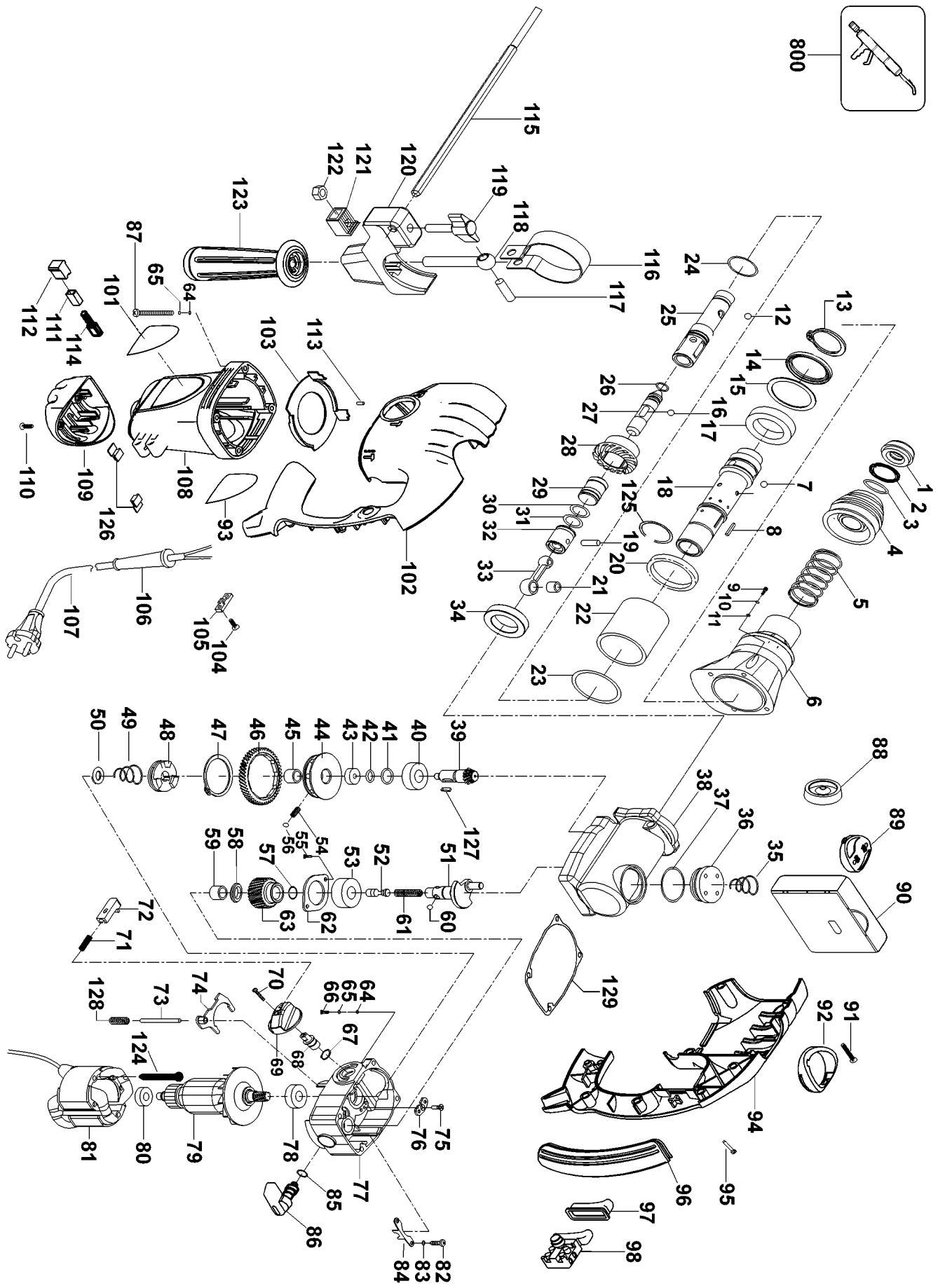


800



## Parts List for KD1001K-AR Type 2

Item Number	Part Number	Description	Qty Required
1	597393-00	LIP SEAL	1
2	1003524-00	CIRCLIP	1
3	597395-00	O-RING	1
4	597396-00	SLEEVE ASSY	1
5	597397-00	SPRING	1
6	1003525-00	CASTING ASSY.	1
7	597399-00	STEEL BALL	1
8	597400-00	INSERT	1
9	597401-00	SCREW	4
10	597402-00	SPRING WASHER	4
11	597403-00	WASHER	4
12	597404-00	STEEL BALL	1
13	597405-00	CIRCLIP	1
14	1003526-00	SEAL	1
15	597407-00	O-RING	1
16	597408-00	STEEL BALL	1
17	597409-00	BEARING	1
18	1003527-00	CYLINDER	1
19	597411-00	PIN	1
20	597412-00	RING	1
21	597413-00	NEEDLE BEARING	1
22	597414-00	BUSHING	1
23	597415-00	O-RING	1
24	597416-00	O-RING	1
25	1003528-00	SLEEVE	1
26	597418-00	O-RING	1
27	597419-00	BEAT PIECE	1

## Parts List for KD1001K-AR Type 2

Item Number	Part Number	Description	Qty Required
28	597420-00	GEAR	1
29	597421-00	RAM	1
30	597422-00	O-RING	1
31	597423-00	O-RING	1
32	597424-00	PISTON	1
33	597425-00	CONNECTING ROD	1
34	597426-00	BEARING	1
35	597427-00	SPRING	1
36	597428-00	COVER	1
37	597429-00	O-RING	1
38	597430-00	CRANKCASE	1
39	597431-00	PINION GEAR	1
40	597432-00	BEARING	1
41	597433-00	WASHER	1
42	597434-00	RING	1
43	597435-00	BEARING	1
44	597436-00	WHEEL	1
45	597437-00	NEEDLE BEARING	1
46	597438-00	GEAR	1
47	597439-00	CIRCLIP	1
48	597440-00	CLUTCH ASSY.	1
49	597441-00	SPRING	1
50	597443-00	WASHER	1
51	597444-00	CRANK	1
52	597445-00	SPINDLE	1
53	597446-00	BEARING	1
54	597447-00	SPRING	1

## Parts List for KD1001K-AR Type 2

Item Number	Part Number	Description	Qty Required
55	597448-00	SCREW	2
56	597449-00	STEEL BALL	1
57	597450-00	RING	1
58	597451-00	SEAL	1
59	597452-00	BEARING	1
60	597453-00	BALL	1
61	597454-00	SPRING	1
62	597455-00	COVER BEARING	1
63	597456-00	GEAR	1
64	597457-00	WASHER	4
65	597458-00	SPRING WASHER	4
66	597459-00	SCREW	4
67	597460-00	RING	1
68	597461-00	SHAFT	1
69	597462-00	KNOB	1
70	597463-00	SCREW	1
71	597464-00	SPRING	1
72	597465-00	COVER	1
73	597466-00	BOLT	1
74	597468-00	FORK	1
75	597469-00	SCREW	1
76	597470-00	STOP	1
77	597471-00	GEAR BOX	1
78	597472-00	BEARING	1
79	597473-00	ARMATURE 230V	1
80	597474-00	BEARING	1
81	597475-00	FIELD 230V	1

## Parts List for KD1001K-AR Type 2

Item Number	Part Number	Description	Qty Required
82	597476-00	SCREW	2
83	597477-00	SPRING WASHER	2
84	597478-00	LOCKING DEVICE	1
85	597479-00	O-RING	1
86	597480-00	KNOB	1
87	597481-00	SCREW	1
88	597482-00	DUST GUARD	1
89	597483-00	COVER	1
90	597484-00	CASE	1
91	597485-00	SCREW	1
92	597486-00	INSERT	1
93	597487-00	NAME PLATE	1
94	597488-00	HOUSING, RH	1
95	597489-00	SCREW	7
96	597490-00	HANDLE,COVER	1
97	597491-00	SWITCH COVER	1
98	597492-00	SWITCH	1
101	597495-00	BRAND LABEL	1
102	579496-00	HOUSING,LH	1
103	597497-00	BAFFLE	1
104	597498-00	SCREW	2
105	597499-00	CORD CLAMP	1
106	597500-00	CORD PROTECTOR	1
107	597501-00	CORD SET	1
108	597502-00	MOTOR HOUSING	1
109	597503-00	END CAP	1
110	597504-00	SCREW	2

## Parts List for KD1001K-AR Type 2

Item Number	Part Number	Description	Qty Required
111	597505-00	SLEEVE	2
112	597506-00	BRUSH HOLDER	2
113	597507-00	DAMPER	1
114	597508-00	BRUSH	2
115	597509-00	DEPTH STOP	1
116	597510-00	CLAMP	1
117	597511-00	BOLT	1
118	597512-00	NUT	1
119	597513-00	SCREW, WING	1
120	597514-00	HOLDER	1
121	597515-00	CLAMP	1
122	597516-00	NUT	1
123	597517-00	SIDE HANDLE	1
124	597518-00	SCREW	2
125	597519-00	RING	1
126	597520-00	RUBBER PAD	2
127	597442-00	INSERT	1
128	597467-00	SPRING	1
129	1003529-00	PAPER SEAL	1
800	870889-02	GREASE	1