
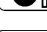
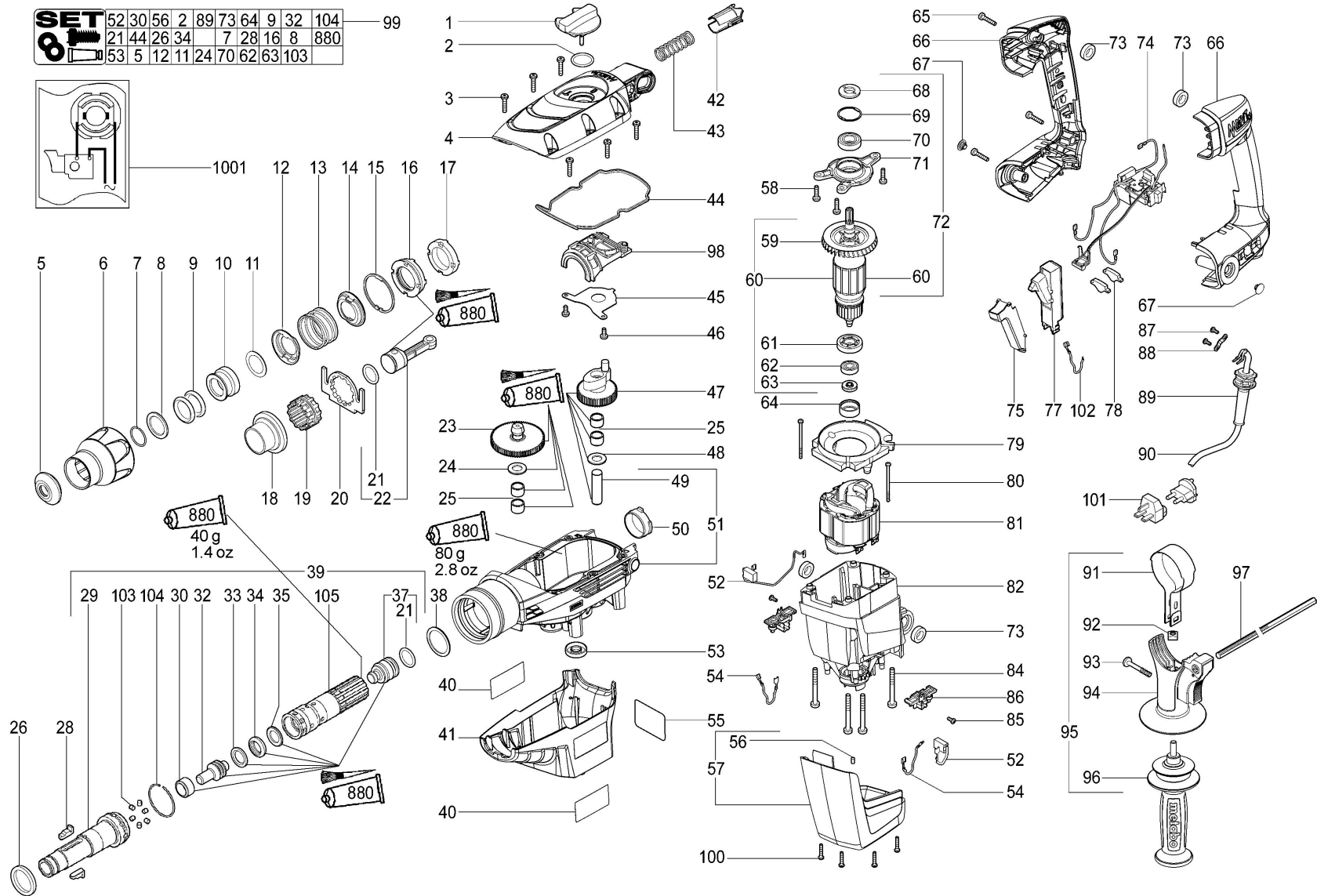


SET	52	30	56	2	89	73	64	9	32	104	99
	21	44	26	34	7	28	16	8	880		
	53	5	12	11	24	70	62	63	103		



Position	Amount	Type number	Description
1	1	343394400	Control knob
2	1	344098090	O-ring
3	6	141123560	Fillister head screw
4	1	315416320	Gear-box cover
5	1	344098250	Rubber cap
6	1	343394410	Sliding sleeve compl.
7	1	141155450	Circlip
8	1	341012930	Washer
9	2	344098130	O-ring
10	1	341058670	Sleeve
11	1	341012940	Washer
12	1	339133290	Guide sheet
13	1	342003510	Pressure spring
14	1	339133310	Guide plate
15	1	141156340	Retaining ring
16	1	316042700	Holder compl.
17	1	341070590	Ring
18	1	340032810	Bevel gear
19	1	343394390	Setting ring
20	1	339133180	Retaining sheet
21	2	344098170	O-ring
22	1	316042620	Piston compl.
23	1	316042580	Clutch
24	1	341012950	Washer
25	4	320050640	Needle roller and cage
26	1	344098670	Damper
28	2	339133320	Carrier
29	1	341059150	Drill driving sleeve
30	1	341012960	Brake ring
32	1	316042660	Piston compl.
33	1	341012860	Stop ring
34	1	344098260	Rubber ring
35	1	341059110	Washer
37	1	316042610	Striker compl.
38	1	341012880	Washer
39	1	316045120	Spindle compl.,SDS-M
40	2	338121090	Metabo label
41	1	343394340	GEAR BOX CAP
42	1	343394430	Pressure plate
43	1	342003520	Pressure spring
44	1	344098230	Seal

45	1	339133220	Retaining sheet
46	2	141123580	Fillister head screw
47	1	316042590	Bevel gear compl.
48	1	341012910	Washer
49	1	341515310	Bearing bolt
50	1	320050680	Bearing
51	1	315104730	Gear housing compl.
52	1	316042650	Carbon brush set
53	1	339011650	Shaft sealing ring
54	2	344497400	Lead Wire (Switch)
55	1	338050580	NAME PLATE
56	1	344098090	O-ring
57	1	343394320	Motor cap cpl.
58	3	141123550	Fillister head screw
59	1	330001870	Fan
60	1	310009310	Armature compl.,220-240 V
61	1	344098070	Dust seal
62	1	320050650	Ball bearing
63	1	343394310	Tacho disc
64	1	344098220	Rubber bushing
65	3	341704270	Screw,L5x35 T2025
66	1	343394330	Handle 2 part
67	2	343394290	Cover cap
68	1	344098080	Sealing ring
69	1	342022070	Retaining ring
70	1	320050670	Ball bearing
71	1	315300630	Gear cover
72	1	316042520	Armature w.flange
73	4	339011640	Damping ring
74	1	343081350	Electronic unit,220-240 V
75	1	343394360	Pressure plate
77	1	343408100	On-off switch
78	2	343394380	Light transmitter
79	1	339151110	Baffle
80	2	341704210	Screw,4x64
81	1	311010850	Field coil w.field coil,220-240 V
82	1	315013260	Motor housing
84	4	141123540	Fillister head screw
85	2	341704240	Screw,
86	2	343000920	Brush holder
87	2	341704240	Screw,
88	1	343394210	Cable clip

89	1	344098210	Cable sleeve
90	1	344497700	Cable,m. China Stecker
91	1	339133190	Clamping holder
92	1	141131020	Square nut
93	1	341704220	Screw,K5x45 T20
94	1	316042540	Body compl.
95	1	314001080	Side support handle compl.
96	1	314001070	Anti-vibration handle compl.
97	1	331050750	Depth stop
98	1	316042630	Shift element compl.
99	1	316045130	Maintenance kit
100	4	341704260	Screw,
101	1	399999990	Part not needed
102	1	399999990	Part not needed
103	6	341520220	Pin
104	1	342200640	Circlip
105	1	341059160	Carrier
880	1	344131170	Tube Grease,45 g Urethyn
1001	1	338504740	Wiring diagram

