

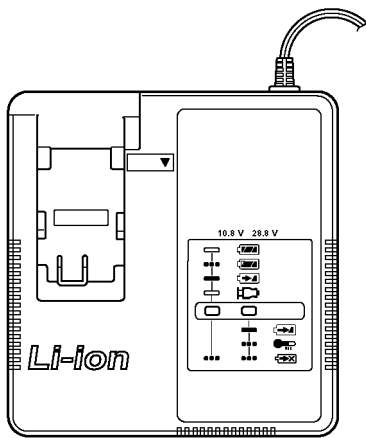
Service Manual

Battery charger

Model No. **LBC-81B**

Sub Model No.
EY0L81

GREENLEE brand
North America



Please file and use this manual together with the service manual for Model No. EY0L81, Order No. PTD1008U56CE.

⚠ WARNING

This service information is designed for experienced repair technicians only and is not designed for use by the general public. It does not contain warnings or cautions to advise non-technical individuals of potential dangers in attempting to service a product. Products powered by electricity should be serviced or repaired only by experienced professional technicians. Any attempt to service or repair the product or products dealt with in this service information by anyone else could result in serious injury or death.

IMPORTANT SAFETY NOTICE

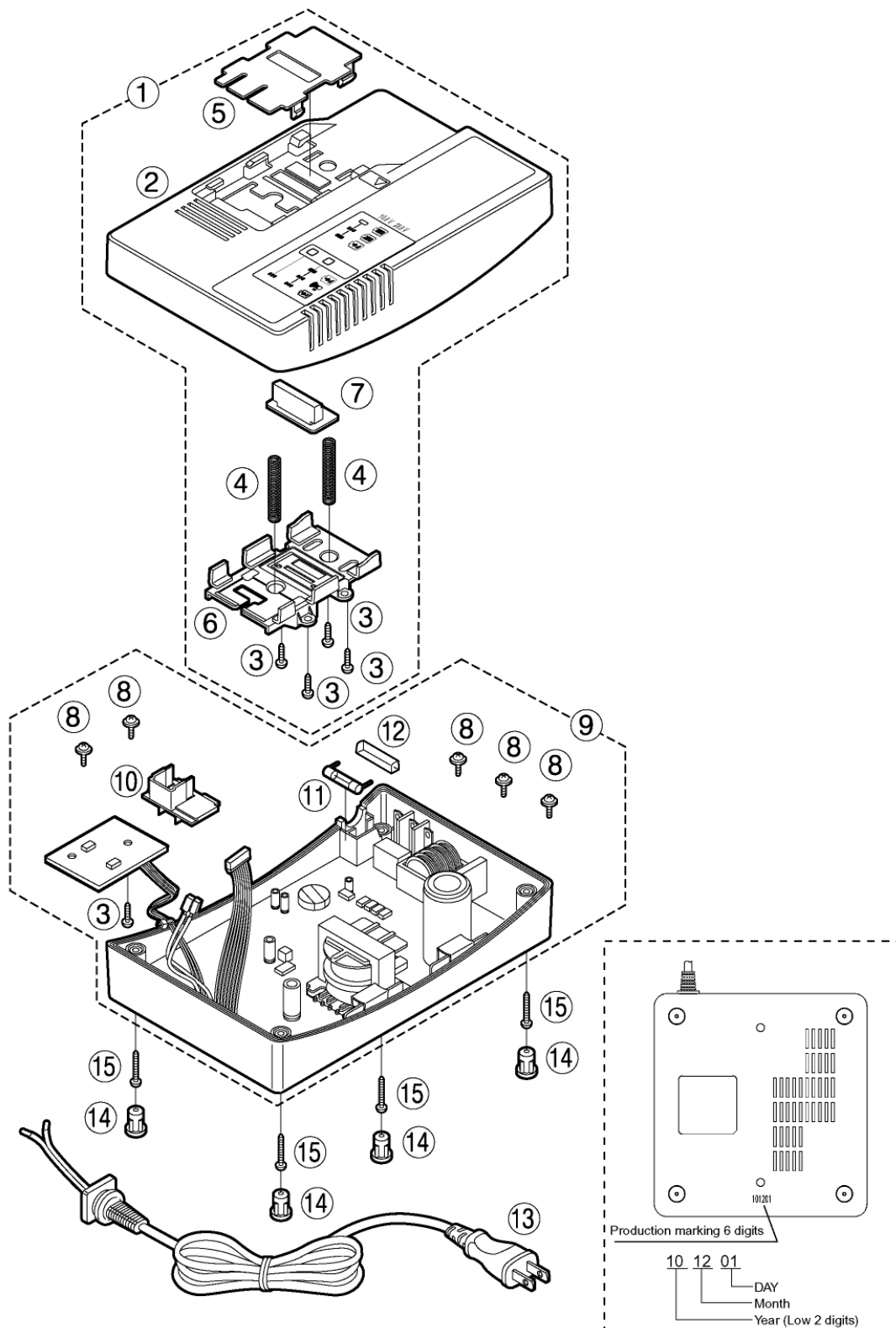
There are special components used in this equipment which are important for safety. These parts are marked by **⚠** in the Schematic Diagrams, Circuit Board Diagrams, Exploded Views and Replacement Parts List. It is essential that these critical parts should be replaced with manufacturer's specified parts to prevent shock, fire or other hazards. Do not modify the original design without permission of manufacturer.

TABLE OF CONTENTS

	PAGE	PAGE
1 Exploded View and Replacement Parts List -----	2	

1 Exploded View and Replacement Parts List

Model No. : LBC-81B Exploded Views



Model No. : LBC-81B Parts List

Safety	Ref. No.	Part No.	Part Name & Description	Q'ty	Remarks
	1	WEZOL81G0010	HOUSING A ASSEMBLY	1	
	2	WEZOL81G0020	HOUSING A	1	
	3	WEYOL81L9048	TAPPING SCREW	5	(K3-8)
	4	WEYOL81L0928	SPRING	2	(2PCS/PK)
	5	WEYOL81K2408	SLIDE PLATE	1	
	6	WEYOL81L3168	SLIDE TERMINAL COVER	1	
	7	WEYOL81L2128	CONNECTOR MODULE	1	
	8	WEYOL81L6018	TAPPING SCREW	5	(2.6×8)
	9	WEZOL81G0030	HOUSING B & MODULE BLOCK	1	
	10	WEYOL81L2428	BATTERY TERMINAL	1	
	11	WEYOL80L2618	FUSE	1	(250V 3.15A)
	12	WEYOL80A3108	FUSE COVER	1	
	13	WEYOL81K2058	POWER CORD	1	(A-2 PLUG)
	14	WEYOL81K3178	SCREW CAP	4	(4PCS/PK)
	15	WEYOL81K6238	TORX TAPPING SCREW	4	(K3-20)