

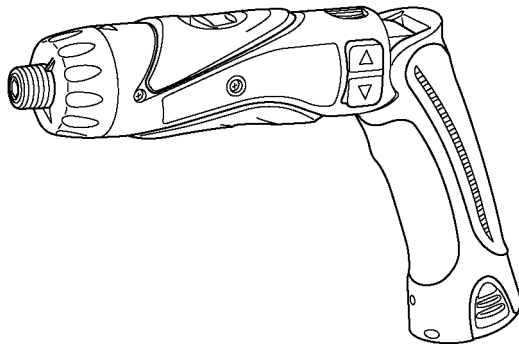
Service Manual

Cordless Drill & Driver

Model No. **LSD-36**

Sub Model No.
EY7410

GREENLEE brand
North America



Please file and use this manual together with the service manual for Model No. EY7410-U1, Order No. PTD0609U38AE.

⚠ WARNING

This service information is designed for experienced repair technicians only and is not designed for use by the general public. It does not contain warnings or cautions to advise non-technical individuals of potential dangers in attempting to service a product. Products powered by electricity should be serviced or repaired only by experienced professional technicians. Any attempt to service or repair the product or products dealt with in this service information by anyone else could result in serious injury or death.

IMPORTANT SAFETY NOTICE

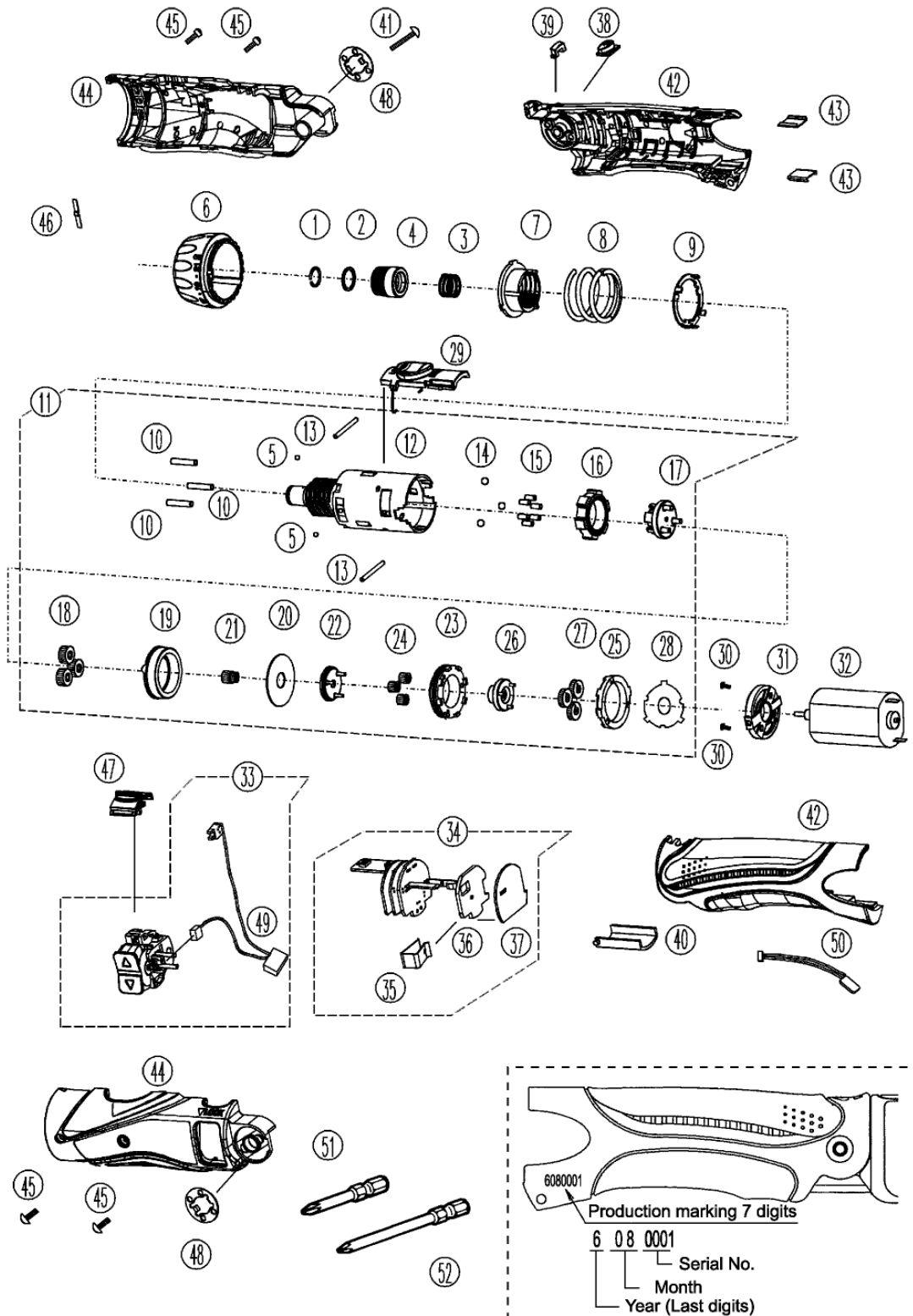
There are special components used in this equipment which are important for safety. These parts are marked by **⚠** in the Schematic Diagrams, Circuit Board Diagrams, Exploded Views and Replacement Parts List. It is essential that these critical parts should be replaced with manufacturer's specified parts to prevent shock, fire or other hazards. Do not modify the original design without permission of manufacturer.

TABLE OF CONTENTS

| | PAGE | PAGE |
|--|------|------|
| 1 Exploded View and Replacement Parts List ----- | 2 | |

1 Exploded View and Replacement Parts List

Model No. : LSD-36 Exploded View



Model No. : LSD-36 Parts List

| Safety | Ref. No. | Part No. | Part Name & Description | Q'ty | Remarks |
|--------|----------|--------------|--------------------------------|------|--------------------------------------|
| | 1 | WEY7410K1167 | C-TYPE SPRING | 1 | |
| | 2 | WEY7410L0867 | THRUST PLATE | 1 | |
| | 3 | WEY7410L0927 | SPRING FOR BIT | 1 | |
| | 4 | WEY7410K3717 | BIT HOLDER | 1 | |
| | 5 | WEY503B1927 | STEEL BALL | 2 | (2PCS/PK) |
| | 6 | WEY7410K3227 | CLUTCH HANDLE | 1 | |
| | 7 | WEY6225L0637 | ADJUSTING SCREW | 1 | |
| | 8 | WEY6225L0167 | CLUTCH SPRING | 1 | |
| | 9 | WEY6225L0847 | CLUTCH PLATE | 1 | |
| | 10 | WEY6225L0397 | PIN A | 3 | ($\phi 3 \times 15.1$), (3PCS/PK) |
| | 11 | WEY7410L1087 | GEAR BOX BLOCK | 1 | |
| | 12 | WEY7410L1807 | GEAR CASE | 1 | |
| | 13 | WEY6225L0377 | PIN C | 2 | ($\phi 2 \times 22.8$), (2PCS/PK) |
| | 14 | WEY6225L6977 | STEEL BALL | 3 | ($\phi 3.5$), (3PCS/PK) |
| | 15 | WEY6225L0387 | PIN B | 6 | ($\phi 2.5 \times 5.8$), (6PCS/PK) |
| | 16 | WEY7410L1507 | LOCK RING | 1 | |
| | 17 | WEY6225L1147 | CARRIER D | 1 | |
| | 18 | WEY6225L1347 | PLANET GEAR C | 3 | (3PCS/PK) |
| | 19 | WEY6225L1477 | RING GEAR C | 1 | |
| | 20 | WEY6225L0857 | THRUST PLATE | 1 | |
| | 21 | WEY6225L1117 | CARRIER A | 1 | |
| | 22 | WEY6225L1127 | CARRIER B | 1 | |
| | 23 | WEY6225L1487 | RING GEAR A | 1 | |
| | 24 | WEY6225L1367 | PLANET GEAR B | 3 | (3PCS/PK) |
| | 25 | WEY6225L1497 | RING GEAR B | 1 | |
| | 26 | WEY6225L1137 | CARRIER C | 1 | |
| | 27 | WEY6225L1357 | PLANET GEAR A | 3 | (3PCS/PK) |
| | 28 | WEY502B0207 | INTERNAL PRESSURE | 1 | |
| | 29 | WEY7410H3237 | CHANGE-GEAR HANDLE | 1 | |
| | 30 | WEY6225L6027 | SCREW | 2 | (K3-5) |
| | 31 | WEY6225L0027 | MOTOR MOUNTING BASE | 1 | |
| | 32 | WEY7410L1008 | DC MOTOR | 1 | |
| | 33 | WEY7410K2007 | SWITCH | 1 | |
| | 34 | WEY7410L2117 | CONTROL PCB | 1 | |
| | 35 | WEY6225L0197 | SPRING | 1 | |
| | 36 | WEY7410L2567 | RADIATING PLATE | 1 | |
| | 37 | WEY7410L0207 | TERMINAL BASE PLATE | 1 | |
| | 38 | WEY7410H3567 | LED LIGHT ON/OFF BUTTON | 1 | |
| | 39 | WEY7410X3117 | BATTERY LOW WARNING LAMP COVER | 1 | |
| | 40 | WEY502B0876 | HINGE COVER | 1 | |
| | 41 | WEY502B6217 | TAPPING SCREW | 1 | (M4*20) |
| | 42 | WEZ7410G0010 | GRIP AB SET | 1 | |
| | 43 | WEY6225L0157 | FASTENING CLIP | 2 | (2PCS/PK) |

Model No. : LSD-36 Parts List

| Safety | Ref. No. | Part No. | Part Name & Description | Q'ty | Remarks |
|--------|----------|--------------|-------------------------|------|-------------|
| | 44 | WEZ7410G0020 | HOUSING AB SET | 1 | |
| | 45 | WEY6230L6017 | TAPPING SCREW | 4 | (2.6*8) |
| | 46 | WEY6225L0177 | CLICK SPRING | 1 | |
| | 47 | WEY7410H0397 | LOCK LEVER | 1 | |
| | 48 | WEY502B0187 | CLICK SPRING | 2 | (2PCS/PK) |
| | 49 | WEY7410L2127 | DETECTION PCB | 1 | |
| | 50 | WEY7410L2337 | LED MODULE | 1 | |
| | 51 | WEY6225S7888 | #1 PHILIPS BIT | 1 | (1/4" 50MM) |
| | 52 | WEY6225S7958 | #2 PHILIPS BIT | 1 | (1/4" 50MM) |