

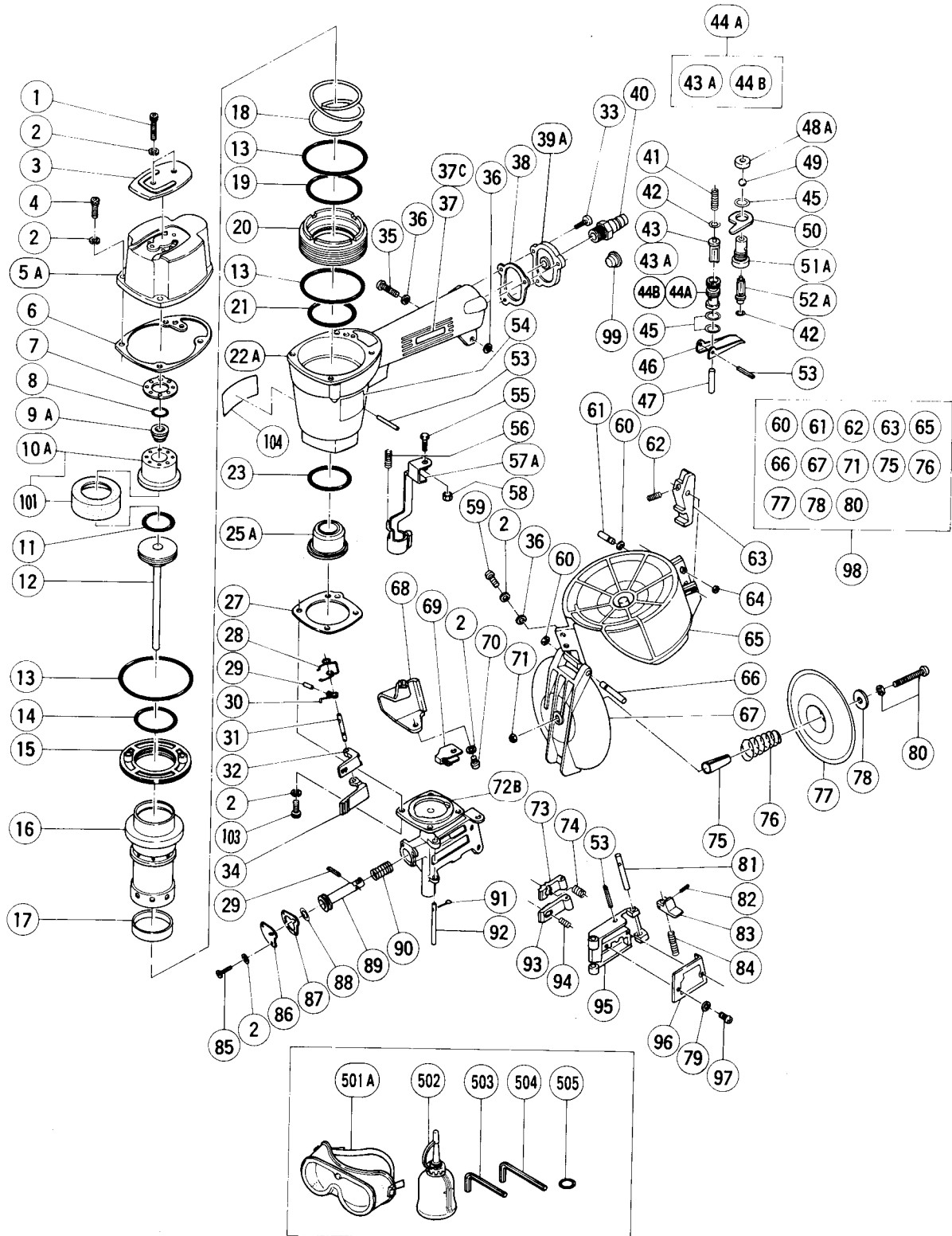
## PNEUMATIC TOOL PARTS LIST

■ COIL NAILER

Model NV 50AA PLASTIC COLLATION

1997 · 2 · 20

(E5)



## PARTS

NV 50AA

| ITEM NO. | CODE NO. | DESCRIPTION                          | NO. USED | REMARKS                    |
|----------|----------|--------------------------------------|----------|----------------------------|
| 1        | 949-662  | HEX. SOCKET HD. BOLT M5X25 (10 PCS.) | 2        |                            |
| 2        | 949-454  | SPRING WASHER M5 (10 PCS.)           | 15       |                            |
| 3        | 876-179  | TOP COVER                            | 1        |                            |
| 4        | 949-757  | HEX. SOCKET HD. BOLT M5X20 (10 PCS.) | 4        |                            |
| * 5A     | 877-917  | EXHAUST COVER                        | 1        |                            |
| * 5A     | 880-275  | EXHAUST COVER (B)                    | 1        | FOR USA,EUROPE             |
| * 6      | 876-176  | GASKET (B)                           | 1        |                            |
| * 6      | 876-712P | GASKET (F)                           | 1        | FOR USA,EUROPE             |
| * 7      | 876-178  | GASKET (C)                           | 1        |                            |
| * 7      | 876-713P | GASKET (G)                           | 1        | FOR USA,EUROPE             |
| 8        | 872-821  | VALVE O - RING                       | 1        | TILL 1.1987                |
| 9A       | 878-417  | EXHAUST VALVE                        | 1        |                            |
| * 10     | 877-129  | HEAD CAP ASS'Y                       | 1        | INCLUD.101                 |
| * 10A    | 876-711P | HEAD CAP                             | 1        | FOR USA,EUROPE             |
| 11       | 876-174  | PISTON O - RING                      | 1        |                            |
| 12       | 877-127  | PISTON                               | 1        |                            |
| 13       | 876-161  | O - RING (S - 65)                    | 3        |                            |
| 14       | 877-126  | CYLINDER O - RING (D)                | 1        |                            |
| 15       | 876-168  | CYLINDER PLATE                       | 1        |                            |
| 16       | 876-632  | CYLINDER                             | 1        |                            |
| 17       | 876-167  | CYLINDER RING                        | 1        |                            |
| 18       | 876-172  | CYLINDER SPRING                      | 1        |                            |
| 19       | 877-123  | CYLINDER O - RING (A)                | 1        |                            |
| 20       | 877-122  | CYLINDER GUIDE                       | 1        |                            |
| 21       | 877-124  | CYLINDER O - RING (B)                | 1        |                            |
| * 22A    | 877-944  | BODY                                 | 1        |                            |
| * 22A    | 876-709P | BODY (B)                             | 1        | FOR USA,EUROPE             |
| 23       | 877-125  | CYLINDER O - RING (C)                | 1        |                            |
| 25A      | 878-359  | PISTON BUMPER                        | 1        |                            |
| 27       | 876-673  | GASKET (A)                           | 1        |                            |
| 28       | 876-717  | MAIN FEEDER SPRING (A)               | 1        |                            |
| 29       | 949-551  | ROLL PIN D2.5X10 (10 PCS.)           | 2        |                            |
| 30       | 876-691  | SUB FEEDER SPRING                    | 1        |                            |
| 31       | 876-689  | FEEDER SHAFT                         | 1        |                            |
| 32       | 876-688  | MAIN FEEDER                          | 1        |                            |
| 33       | 949-821  | HEX. SOCKET HD. BOLT M5X16 (10 PCS.) | 3        |                            |
| 34       | 876-707  | SUB FEEDER                           | 1        |                            |
| 35       | 949-242  | MACHINE SCREW M5X22 (10 PCS.)        | 1        |                            |
| 36       | 876-205  | WASHER                               | 4        |                            |
| 37       | 950-565  | HITACHI LABEL                        | 1        | TILL 7.1986                |
| 37C      | 878-182  | HITACHI LABEL                        | 1        | SINCE 8.1986               |
| 38       | 877-131  | GASKET (D)                           | 1        |                            |
| * 39A    | 878-730  | CAP                                  | 1        |                            |
| * 39A    | 880-036  | CAP                                  | 1        | FOR USA,EUROPE             |
| 40       | 874-782  | AIR PLUG PT 1/4                      | 1        |                            |
| 41       | 875-643  | PLUNGER SPRING                       | 1        |                            |
| 42       | 874-820  | PLUNGER O - RING                     | 2        |                            |
| 43       | 876-739  | SAFETY PLUNGER (A)                   | 1        | TILL 7.1986                |
| 43A      | 878-122  | PLUNGER (A)                          | 1        | SINCE 8.1986               |
| 44A      | 876-764  | VALVE BUSHING ASS'Y                  | 1        | INCLUD.43A,44B TILL 7.1986 |
| 44B      | 878-266  | VALVE BUSHING                        | 1        | SINCE 8.1986               |

\*: ALTERNATIVE PARTS

## PARTS

NV 50AA

| ITEM NO. | CODE NO. | DESCRIPTION                            | NO. USED | REMARKS                              |
|----------|----------|--|----------|--------------------------------------|
| 45       | 875-638  | O - RING (S - 12)                      | 3        |                                      |
| 46       | 876-203  | TRIGGER                                | 1        |                                      |
| 47       | 875-642  | SAFETY PLUNGER (B)                     | 1        |                                      |
| 48A      | 878-734  | VALVE PACKING                          | 1        |                                      |
| 49       | 875-645  | URETHANE BALL (C) D7.14                | 1        |                                      |
| 50       | 875-644  | VALVE PLATE                            | 1        |                                      |
| 51A      | 877-335  | TRIGGER VALVE BUSHING                  | 1        |                                      |
| 52A      | 878-121  | TRIGGER PLUNGER                        | 1        |                                      |
| 53       | 949-866  | ROLL PIN D3X30 (10 PCS.)               | 3        |                                      |
| 54       |          | NAME PLATE                             | 1        |                                      |
| 55       | 875-650  | SAFETY BOLT                            | 1        |                                      |
| * 56     | 876-676  | SAFETY SPRING                          | 1        |                                      |
| * 56     | 877-943  | SPRING                                 | 1        | FOR EUROPE                           |
| 57A      | 877-941  | PUSHING LEVER (G)                      | 1        |                                      |
| 58       | 949-555  | NUT M5 (10 PCS.)                       | 1        |                                      |
| 59       | 949-240  | MACHINE SCREW M5X18 (10 PCS.)          | 2        |                                      |
| 60       | 872-971  | RETAINING RING (E - TYPE) FOR D3 SHAFT | 2        |                                      |
| 61       | 877-150  | STOPPER PIN                            | 1        |                                      |
| 62       | 877-149  | STOPPER SPRING                         | 1        |                                      |
| 63       | 877-151  | MAGAZINE STOPPER                       | 1        |                                      |
| 64       | 945-255  | U - NUT M5                             | 1        |                                      |
| 65       | 877-146  | MAGAZINE                               | 1        |                                      |
| 66       | 877-152  | HINGE PIN                              | 1        |                                      |
| 67       | 877-147  | MAGAZINE COVER                         | 1        |                                      |
| 68       | 877-138  | GUARD                                  | 1        |                                      |
| 69       | 877-145  | GUARD WASHER                           | 1        |                                      |
| 70       | 949-237  | MACHINE SCREW M5X12 (10 PCS.)          | 1        |                                      |
| 71       | 876-465  | NYLON NUT M4                           | 1        |                                      |
| 72B      | 877-948  | NOSE ASS'Y                             | 1        | INCLUD.92                            |
| 73       | 877-143  | MAIN NAIL STOPPER                      | 1        |                                      |
| 74       | 876-681  | MAIN STOPPER SPRING                    | 1        |                                      |
| 75       | 877-148  | SLEEVE                                 | 1        |                                      |
| 76       | 877-141  | HOLDER SPRING                          | 1        |                                      |
| 77       | 877-140  | NAIL HOLDER                            | 1        |                                      |
| 78       | 875-249  | THRUST WASHER                          | 1        |                                      |
| 79       | 949-453  | SPRING WASHER M4 (10 PCS.)             | 2        |                                      |
| 80       | 986-120  | MACHINE SCREW (W/SP. WASHER) M4X40     | 1        |                                      |
| 81       | 876-682  | LOCK SHAFT                             | 1        |                                      |
| 82       | 949-776  | ROLL PIN D3X10 (10 PCS.)               | 1        |                                      |
| 83       | 877-374  | GUIDE LOCK                             | 1        |                                      |
| 84       | 877-372  | SPRING                                 | 1        |                                      |
| 85       | 876-705  | HEX. SOCKET SET SCREW M5X10            | 2        |                                      |
| 86       | 877-136  | FEED PISTON COVER                      | 1        |                                      |
| 87       | 877-137  | GASKET (E)                             | 1        |                                      |
| 88       | 873-095  | O - RING (P - 16)                      | 1        |                                      |
| 89       | 876-692  | FEED PISTON                            | 1        |                                      |
| 90       | 877-144  | FEED SPRING                            | 1        |                                      |
| * 91     | 949-534  | SPLIT PIN D2X15 (10 PCS.)              | 1        | (TILL 10.1993 EXCEPT FOR USA,EUROPE) |
| * 91     | 877-826  | FEEDER SHAFT RING                      | 1        | FOR USA,EUROPE                       |
| * 92     | 876-716  | NAIL GUIDE SHAFT (A) ASS'Y             | 1        | INCLUD.91 (FEEDER SHAFT RING)        |
| 93       | 876-679  | SUB NAIL STOPPER                       | 1        |                                      |

\*: ALTERNATIVE PARTS

**PARTS**

NV 50AA

| ITEM NO. | CODE NO. | DESCRIPTION                       | NO. USED | REMARKS                              |
|----------|----------|-----------------------------------|----------|--------------------------------------|
| 94       | 876-685  | SUB STOPPER SPRING                | 1        |                                      |
| 95       | 877-134  | NAIL GUIDE                        | 1        |                                      |
| 96       | 877-135  | NAIL GUIDE COVER                  | 1        |                                      |
| 97       | 949-214  | MACHINE SCREW M4X6 (10 PCS.)      | 2        |                                      |
| 98       | 877-139  | MAGAZINE ASS'Y                    | 1        | INCLUD.60 - 63,65 - 67,71,75 - 78,80 |
| 99       | 872-035  | DUST CAP                          | 1        | FOR USA,EUROPE                       |
| 101      | 877-942  | HEAD CAP RUBBER                   | 1        |                                      |
| 103      | 878-181  | NYLOCK HEX. SOCKET HD. BOLT M5X16 | 4        |                                      |
| 104      | 878-184  | WARNING LABEL                     | 1        |                                      |

**STANDARD ACCESSORIES**

| ITEM NO. | CODE NO. | DESCRIPTION                     | NO. USED | REMARKS        |
|----------|----------|---------------------------------|----------|----------------|
| 501A     | 875-769  | EYE PROTECTOR                   | 1        |                |
| * 502    | 877-153  | PNEUMATIC TOOL LUBRICANT (30CC) | 1        | EXCEPT FOR USA |
| * 503    | 943-277  | HEX. BAR WRENCH 3MM             | 1        | FOR USA,EUROPE |
| * 504    | 944-458  | HEX. BAR WRENCH 4MM             | 1        | FOR USA,EUROPE |
| * 505    | 872-821  | VALVE O - RING                  | 1        | FOR USA        |

**OPTIONAL ACCESSORIES**

| ITEM NO. | CODE NO. | DESCRIPTION                          | NO. USED | REMARKS                    |
|----------|----------|--------------------------------------|----------|----------------------------|
| 602      | 874-116  | AIR SOCKET 6MM                       | 1        |                            |
| 604      | 876-212  | PNEUMATIC TOOL LUBRICANT (1L)        | 1        |                            |
| 605      | 876-720  | DRIVE CONTROLLER                     | 1        |                            |
| 606      | 944-458  | HEX. BAR WRENCH 4MM                  | 1        |                            |
| 607      | 943-277  | HEX. BAR WRENCH 3MM                  | 1        |                            |
| 608A     | 877-908  | POWER SET                            | 1        | INCLUD.609 - 614,616       |
| 609      | 949-827  | HEX. SOCKET HD. BOLT M5X65 (10 PCS.) | 2        |                            |
| 610      | 949-826  | HEX. SOCKET HD. BOLT M5X60 (10 PCS.) | 4        |                            |
| 611      | 877-909  | UPPER COVER                          | 1        |                            |
| 612      | 877-911  | GASKET (H)                           | 1        |                            |
| 613      | 877-912  | GASKET (J) W/4MM HOLE                | 2        | FOR ROLL TYPE NAILER       |
| 614      | 877-910  | EXHAUST PIECE                        | 1        |                            |
| 615      | 876-762  | SINGLE SHOT PARTS                    | 1        |                            |
| 616      | 877-915  | GASKET (J) W/O 4MM HOLE              | 2        | FOR NON - ROLL TYPE NAILER |

\* : ALTERNATIVE PARTS