



RB32-VSR

RB32-VSR FEATURES AND BENEFITS

1. Champion's RB32-VSR MiniBrute with variable speed & reverse motor is engineered for drilling holes and tapping threads.
2. The RB32-VSR features a 0-550 variable speed motor, which can be operated in both forward and reverse.
3. An optional tapping head unit is available for use with hand taps and spiral point taps. With Champion's 'quick change' tapping head, a variety of tap sizes #0 thru 7/8" and 3/8" NPT pipe taps can be run utilizing the RB32-VSR.

TO ASSEMBLE / CHANGE THE RB32-TAPPER

1. The arbor and arbor support bracket must be removed to assemble the tapper.
2. Align the threaded hole in the tapper with the 1/2-20 thread spindle.
3. Turn clockwise to tighten.
4. To remove the tapper, use the 17mm wrench provided to hold the spindle nut in place. Use the 7/16" wrench to hold the flats while turning counter clockwise to loosen.

USING THE RB32-TAPPER

1. Align the tapper collet with the hole on the bottom of the tapper.
2. Push up on one side of tapper, push in collet and let down sides of tapper to lock collet into place.
3. Align tap with hole in center of the collet. Once aligned, push collet ring in, push tap into collet and release center collet ring to lock tap into place.
4. Taps can be run at full speed after developing a comfortable technique. Switch to neutral prior to reversing taps. This will help prolong the life of the motor.
5. To remove, reverse steps.



No. List/Size Description (Qty per Machine)

| | |
|-----------------|----------------------------|
| RB32-VSR-504 | Conduit Lead |
| RB32-VSR-527 | Complete Motherboard |
| RB32-VSR-801 | Variable Speed Module |
| RB32-VSR-802 | Speed Control Knob |
| RB32-VSR-803 | Fwd/Rev Lever Switch |
| RB32-VSR-804 | Contact Block N/O |
| RB32-VSR-805 | Single N/O Contact |
| RB32-VSR-806 | Power Trail |
| RB32-VSR-807 | Fwd/Rev Switch Plate |
| RB32-TAPPER | Tapping Unit for RB32 (a) |
| RB32-COLLET-SET | #2 Adaptor (20 pc) Set (b) |



RB32-ECS

RB32-ECS FEATURES AND BENEFITS

1. The RB32-ECS comes equipped with an external tank which holds eight ounces of cutting fluid.
2. Fluids automatically flow through a nylon reinforced tube to an inducer, which is mounted to the machines special coolant arbor.
3. Additional fluid can be quickly added.

TO ASSEMBLE THE EXTERNAL COOLANT SYSTEM (RB32-ECS)

1. Locate and remove the side screw used to fasten the coolant system, located on the side of the drill press near the retaining ring.
2. Align the large hole on the flat black bracket with the screw hole. Replace screw into hole and tighten in a clockwise direction.
3. Align the hole on the coolant bottle / bracket with the small hole on the flat black bracket. Insert screw and nut and tighten.
4. Attach one end of the coolant hose to the hose fitting near coolant bottle. Attach the other end of the coolant hose to hose fitting on the coolant arbor.
5. To remove, reverse above steps.



No. List/Size Description (Qty per Machine)

| | |
|--------------|--------------------------------|
| RB32-ECS-304 | Dovetail Slide |
| RB32-ECS-902 | Coolant Bottle Assembly |
| RB32-ECS-903 | Coolant Arbor |
| RB32-ECS-906 | Plastic Coolant Tube |
| RB32-ECS-907 | Arbor Support Bracket |
| RB32-ECS-908 | Static Coolant Ring- (inducer) |

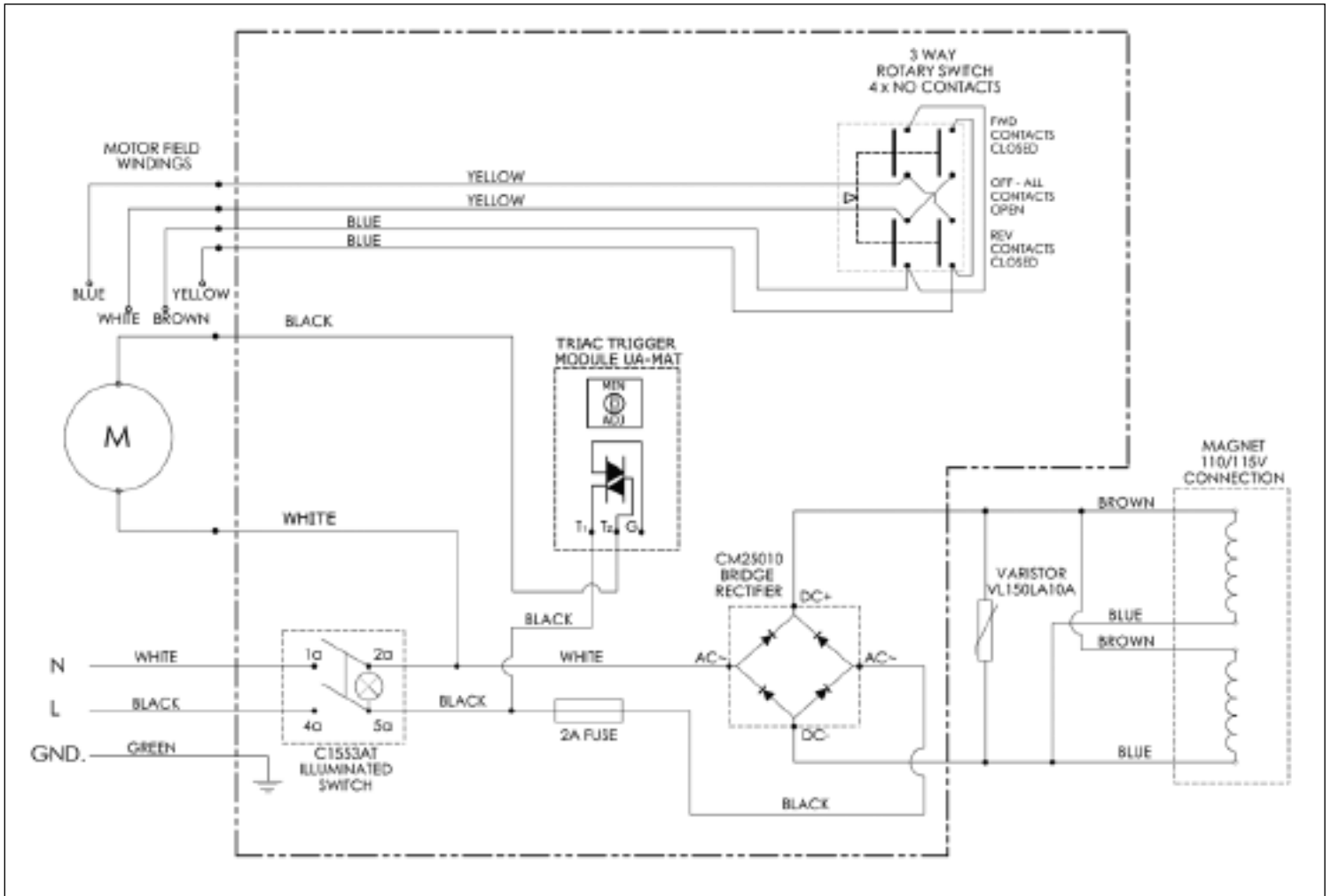
* Standard RB32 model cannot be retrofitted by the user to RB-VSR or RB32-ECS models.

**See reverse side for electrical diagram.



RB32 MINIBRUTE VSR / ECS

RB32 VSR ELECTRICAL DIAGRAM



* Standard RB32 model cannot be retrofitted by the user to RB32-VSR or RB32-ECS models.



P.O.Box 368, Rockville Centre, NY 11571-0368

Tel: 516-536-8200 Fax: 516-536-8186

www.championcuttingtool.com