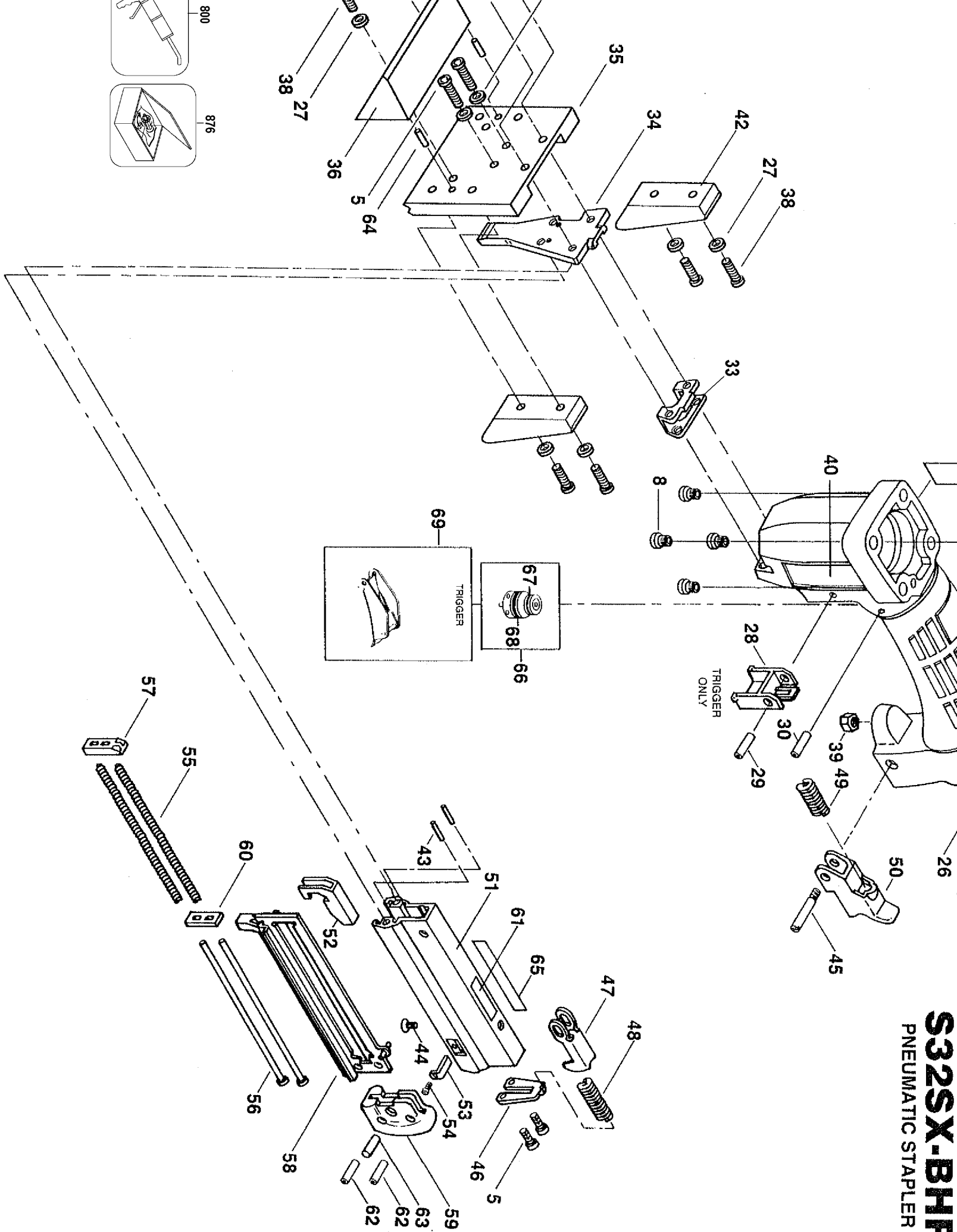


S32SX-BHF PNEUMATIC STAPLER



Parts List for S32SX-BHF Type 0

| Item Number | Part Number | Description | Qty Required |
|-------------|-------------|----------------------|--------------|
| 1 | 100297 | SCREW | 1 |
| 2 | S32030 | WASHER- SPECIAL | 1 |
| 3 | S32032 | COVER-EXHAUST | 1 |
| 4 | S32045 | MUFFLER | 1 |
| 5 | 100260 | SCREW | 1 |
| 6 | S32186 | WASHER- SPECIAL | 1 |
| 7 | T32010 | CAP WITH INSERT | 1 |
| 8 | S32011 | INSERT-M4 | 1 |
| 9 | T32007 | BUMPER- PISTON STOP | 1 |
| 10 | T32028 | SPRING-HEAD VALVE | 1 |
| 11 | 108572 | O-RING-26MMX2MM | 1 |
| 12 | 9R198720 | HEAD VALVE | 1 |
| 13 | MRG035020 | O-RING-1.378X.079 | 1 |
| 14 | S32109 | RING-PISTON | 1 |
| 15 | 105541 | ASS'Y-DRIVER/PISTON | 1 |
| 16 | T32031 | SEAL-CYLINDER SLEEVE | 1 |
| 17 | S32208 | SLEEVE-CYLINDER | 1 |
| 18 | RG161210 | O-RING-1.612X.103 NB | 1 |
| 19 | T32080 | CHECK SEAL | 1 |
| 20 | 100353 | O-RING-1.301X.070 | 1 |
| 21 | 102882 | BUMPER | 1 |
| 22 | S32187 | PLATE- FRAME | 1 |
| 23 | S32001 | WASHER- URETHANE ORA | 1 |
| 24 | S32018 | GUIDE-DRIVER | 1 |
| 25 | T32046 | GASKET-FRAME/CAP | 1 |
| 26 | T32008A | FRAME | 1 |
| 27 | PW8 | WASHER-PWR-.188 | 1 |

Parts List for S32SX-BHF Type 0

| Item Number | Part Number | Description | Qty Required |
|-------------|-------------|----------------------|--------------|
| 28 | 106173 | STOP-TRIGGER | 1 |
| 29 | 100298 | PIN-SPIRAL M3X30 | 1 |
| 30 | 102549 | PIN-SPECIAL SPIROL M | 1 |
| 31 | S32141 | GASKET- END CAP | 1 |
| 32 | S32140 | CAP-END | 1 |
| 33 | S32017A | ASSEMBLY-NUT PLATE | 1 |
| 34 | 101753 | NOSE | 1 |
| 35 | 000000-00 | No Longer Available | 1 |
| 36 | 000000-00 | No Longer Available | 1 |
| 37 | 100261 | SCREW | 1 |
| 38 | MSC4070-16 | SCREW-SHCS-M4X0.7X16 | 1 |
| 39 | MHE4070-100 | ELASTIC STOP NUT-M4 | 1 |
| 40 | 000000-00 | No Longer Available | 1 |
| 41 | 000000-00 | No Longer Available | 1 |
| 42 | 000000-00 | No Longer Available | 1 |
| 43 | 110071 | PIN-SPRING-M2X10MM | 1 |
| 44 | 100364 | SCREW | 1 |
| 45 | S32066 | PIN-SPECIAL | 1 |
| 46 | S32072 | PLATE-SPRING | 1 |
| 47 | S32009 | LATCH MAGAZINE | 1 |
| 48 | T27160 | SPRING-COMPRESSION | 1 |
| 49 | S32024 | SPRING-COMPRESSION | 1 |
| 50 | S32025 | HANDLE-LATCH | 1 |
| 51 | 103292 | MAGAZINE | 1 |
| 52 | S32059 | PUSHER | 1 |
| 53 | S32177 | STOP-CORE | 1 |
| 54 | MSC4070-8 | SCREW-SHCS-M4X0.70X8 | 1 |

Parts List for S32SX-BHF Type 0

| Item Number | Part Number | Description | Qty Required |
|-------------|-------------|----------------------|--------------|
| 55 | S32065 | SPRING-PUSHER | 1 |
| 56 | S32061A | ASSEMBLY-SPRING ROD | 1 |
| 57 | S32064 | SUPPORT-ROD | 1 |
| 58 | 000000-00 | No Longer Available | 1 |
| 59 | S32063 | END-CORE | 1 |
| 60 | S32178 | WASHER-PUSHER SPRING | 1 |
| 61 | 100299 | LABEL | 1 |
| 62 | 100263 | PIN-SPIROL-M4X14MM | 1 |
| 63 | 100264 | PIN-SPIROL | 1 |
| 64 | MPP030016 | PIN-SPIRAL-M3X16 | 1 |
| 65 | 159914 | LABEL-WARNING-T.O. | 1 |
| 66 | TVA5 | TRIGGER VLV KIT | 1 |
| 67 | 86459 | O-RING | 1 |
| 68 | 851554 | O-RING-.703X.103 | 1 |
| 69 | CNTK2 | KIT-CONTACT TRIP CON | 1 |
| 70 | 100817 | O-RING-1.299X.103 | 1 |
| 71 | S32211 | RING-CYLINDER SLEEVE | 1 |
| 800 | 100653 | LUBE (2CC) | 1 |
| 800 | 100679 | LUBE (1LB.CAN) | 1 |
| 876 | ORK10 | REPAIR KIT | 1 |
| 876 | RBK14 | BT35/50 S32/PC5000 K | 1 |