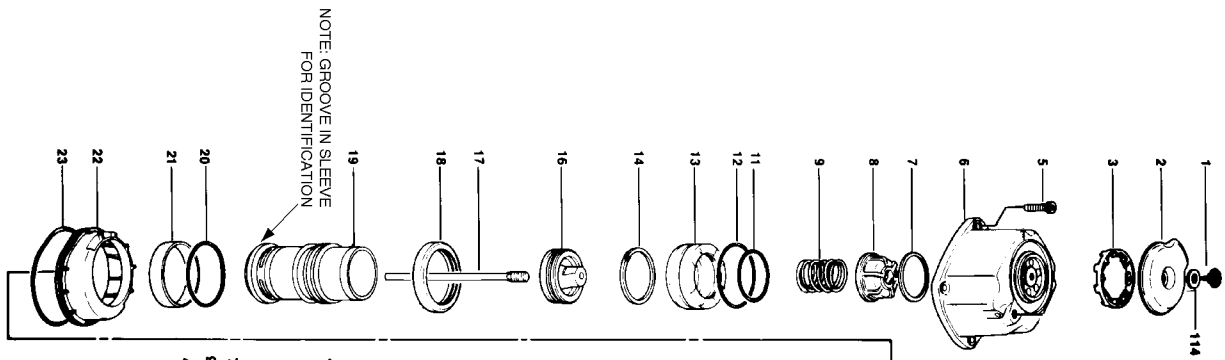
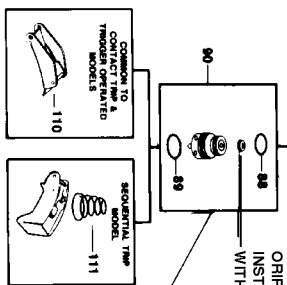
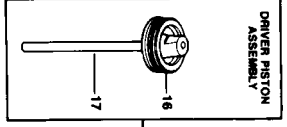
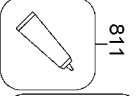
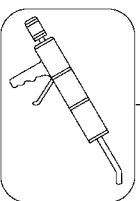
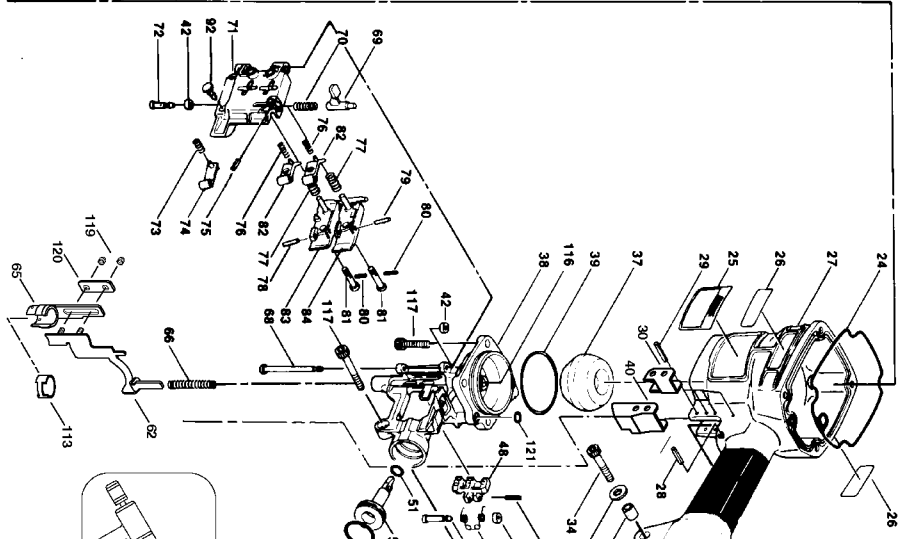


**SDCN14B**  
**COIL-FED PNEUMATIC NAILERS**  
**CLAVADORAS NEUMÁTICAS ALIMENTADAS POR ROLLO**  
**CLOUEURS PNEUMATIQUES À ENROULEMENT**

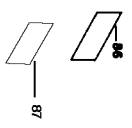
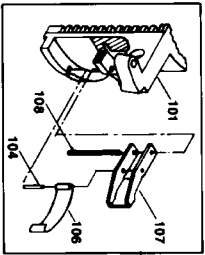
ORIFICE CAP AND  
 INSTRUCTIONS ARE SUPPLIED  
 WITH VALVE.



NOTE: GROOVE IN SLEEVE  
 FOR IDENTIFICATION



Assemble driver to main piston  
 with Loctite #271, available as  
 part 851325 - Loctite 271 Packet.



## Parts List for SDCN14B Type 0

| Item Number | Part Number | Description          | Qty Required |
|-------------|-------------|----------------------|--------------|
| 1           | MSLC6100-16 | SCREW- SLHCS M6 X 1. | 1            |
| 2           | T55034      | COVER-EXHAUST        | 1            |
| 3           | T55033      | MUFFLER              | 1            |
| 5           | MSC6100-35  | SCREW-SHCS-M6X1.00X3 | 4            |
| 6           | 000000-00   | No Longer Available  | 1            |
| 7           | T55031      | RING-BUMPER          | 1            |
| 8           | T55050      | BUMPER-TOP           | 1            |
| 9           | 854016      | SPRING-HEAD VALVE    | 1            |
| 11          | MRG041630   | O-RING-1.638X.118    | 1            |
| 12          | MRG052526   | O-RING-2.067X.103    | 1            |
| 13          | T55025      | VALVE-HEAD           | 1            |
| 14          | RG162514-1  | O-RING-1.599X.138    | 1            |
| 16          | 104348      | PISTON-MAIN          | 1            |
| 17          | 000000-00   | No Longer Available  | 1            |
| 18          | T60006      | SEAL-CYLINDER        | 1            |
| 19          | 103295      | SLEEVE-CYLINDER      | 1            |
| 20          | 850006      | O-RING-1.987X.103    | 1            |
| 21          | T60021      | SEAL-CHECK           | 1            |
| 22          | T60001      | RING-CYLINDER        | 1            |
| 23          | 851753      | O-RING-2.734X.139    | 1            |
| 24          | T55024      | GASKET- FRAME CAP    | 1            |
| 25          | 000000-00   | No Longer Available  | 1            |
| 27          | N65005      | FRAME (MACHINING)    | 1            |
| 28          | MPP030020   | PIN-SPIRAL M3X20MM   | 1            |
| 29          | 102549      | PIN-SPECIAL SPIROL M | 1            |
| 30          | 100337      | GUIDE- ARM           | 1            |
| 31          | MHE6100-100 | NUT-ESN M6X1         | 1            |

## Parts List for SDCN14B Type 0

| Item Number | Part Number | Description          | Qty Required |
|-------------|-------------|----------------------|--------------|
| 32          | MPW6.2      | WASHER.SPECIAL       | 1            |
| 33          | N70143      | BUSHING-RUBBER       | 1            |
| 34          | MSC6100-40  | SCREW-SOC. HD. CAP M | 1            |
| 35          | MRG044331   | O-RING-1.748X.122    | 1            |
| 36          | N65006      | CAP-END              | 1            |
| 37          | 106064      | BUMPER               | 1            |
| 38          | N65051      | NOSE                 | 1            |
| 39          | RG198907-1  | O-RING-1.989X0.070   | 1            |
| 40          | 100336      | ARM COVER - B        | 1            |
| 42          | 854004      | WASHER-RUBBER-7      | 2            |
| 47          | MPP030016   | PIN-SPIRAL-M3X16     | 1            |
| 48          | 000000-00   | No Longer Available  | 1            |
| 49          | 000000-00   | No Longer Available  | 1            |
| 50          | N50087      | PIN-SPECIAL(STEP)    | 1            |
| 51          | MRG009824   | O-RING-.386X.094     | 1            |
| 52          | 121829      | PISTON-FEED          | 1            |
| 53          | 851437      | O-RING-.819X.095     | 1            |
| 54          | N65042      | COMP SPRING 3428     | 1            |
| 55          | N65043      | COMP SPRING 3335     | 1            |
| 56          | N65044      | SPRING GUIDE         | 1            |
| 57          | N65020      | FEED PISTON BUMPER   | 1            |
| 58          | N65045      | COLLAR-SPRING        | 1            |
| 59          | MRB026      | RETAINING RING- METR | 1            |
| 62          | 101867      | TRIP-UPPER ASSY.     | 1            |
| 65          | 000000-00   | No Longer Available  | 1            |
| 66          | 100874      | SPRING-COMPRESSION   | 1            |
| 68          | N65036      | PIN-SPECIAL          | 1            |

## Parts List for SDCN14B Type 0

| Item Number | Part Number | Description          | Qty Required |
|-------------|-------------|----------------------|--------------|
| 69          | N70150      | LATCH DOOR           | 1            |
| 70          | 854013      | SPRING,CMPRSN.       | 1            |
| 71          | N65007      | DOOR                 | 1            |
| 72          | N65030      | PIN-SPECIAL          | 1            |
| 73          | N65029      | COMP SPRING 3459     | 1            |
| 74          | N65028      | CHECK PAWL LOWER     | 1            |
| 75          | MPG030012   | PIN SPRING           | 1            |
| 76          | N65027      | COMP SPRING 3382     | 2            |
| 77          | N65025      | COMP SPRING 3336     | 2            |
| 78          | N65022      | CHECK PAWL PIN LOWER | 1            |
| 79          | N65023      | CHECK PAWL PIN UPPER | 1            |
| 80          | 100222      | PIN-SPRING           | 2            |
| 81          | N65016      | PIN-SPECIAL          | 2            |
| 82          | 000000-00   | No Longer Available  | 2            |
| 83          | 000000-00   | No Longer Available  | 1            |
| 84          | 000000-00   | No Longer Available  | 1            |
| 87          | 851936      | LABEL-SWITCH PIN POS | 1            |
| 88          | 86459       | O-RING               | 1            |
| 89          | 851554      | O-RING-.703X.103     | 1            |
| 90          | TVA6        | KIT-TRIGGER VALVE    | 1            |
| 91          | 104629      | ASSEMBLY-PISTON/DRIV | 1            |
| 101         | N65001      | BRACKET- CANISTER    | 1            |
| 102         | 105837      | ASSY-CANISTER COVER  | 1            |
| 103         | N65002      | BOTTOM- CANISTER     | 1            |
| 104         | UB2110.4    | PIN-ROLL 1/8 X 5/8   | 1            |
| 105         | UB3824.4    | PIN- SPIROL          | 1            |
| 106         | N80108      | SPRING-FLAT          | 1            |

## Parts List for SDCN14B Type 0

| Item Number | Part Number | Description          | Qty Required |
|-------------|-------------|----------------------|--------------|
| 107         | 107455      | LATCH-CANISTER       | 1            |
| 108         | UB2816.4    | PIN- SPIROL          | 1            |
| 109         | N65004A     | ASSY- CANISTER       | 1            |
| 110         | N50082A     | ASSEMBLY-TRIGGER     | 1            |
| 111         | 100387      | SPRING-COMPRESSION   | 1            |
| 112         | 000000-00   | No Longer Available  | 1            |
| 113         | N65046      | TIP-FOOT             | 1            |
| 114         | MPW6.3      | WASHER-PWN M6        | 1            |
| 116         | 116989      | DRIVER GUIDE-LARGE F | 1            |
| 117         | MSC6100-25  | SCREW-SHCS-M6X1.00X2 | 2            |
| 119         | MHE5080-100 | NUT-NYLON M5X.80     | 1            |
| 120         | 101870      | PLATE-RETAINER       | 1            |
| 121         | 000000-00   | No Longer Available  | 1            |
| 800         | 100653      | LUBE (2CC)           | 1            |
| 800         | 100679      | LUBE (1LB.CAN)       | 1            |
| 811         | 851325      | LOCTITE              | 1            |
| 876         | ORK12       | REPAIR KIT           | 1            |