

Tanaka Illustrated Parts Manual

Model Number:

THT-2510

HEDGETRIMMER 30"

P/N 27888

Rev 000

Date 06-09-03

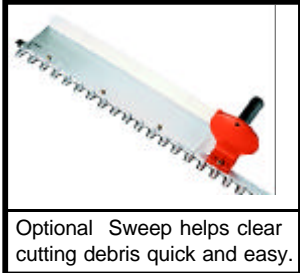


Supplier To The Outdoor Power Equipment Industry

ISM, Inc. • 1028 4th Street SW • Auburn, WA 98001 • Phone: (253) 333-1200 • Fax: (253) 333-1212

THT-2510

Single Sided Hedge Trimmer



Optional Sweep helps clear cutting debris quick and easy.



Features / Benefits

- **24cc, 1.3 hp engine** features two piston rings and a stress relieved, chrome plated cylinder for long engine life.
- **30 inch single-sided blades** provide excellent maneuverability, powerful cutting action, and added reach.
- **Sound reduction system™** reduces engine noise w / special air intake and muffler design.
- **Anti-vibration system** reduces engine vibration which provides for longer and more comfortable operation.
- **Blade safety guard** protects the operator from accidental contact with the blades.
- **1 / 2 / 5 Warranty Coverage** provides **One-Year** coverage for professionals, **Two-Year** Coverage for Homeowners, and **Five Years** on the Electronic Ignition Module.

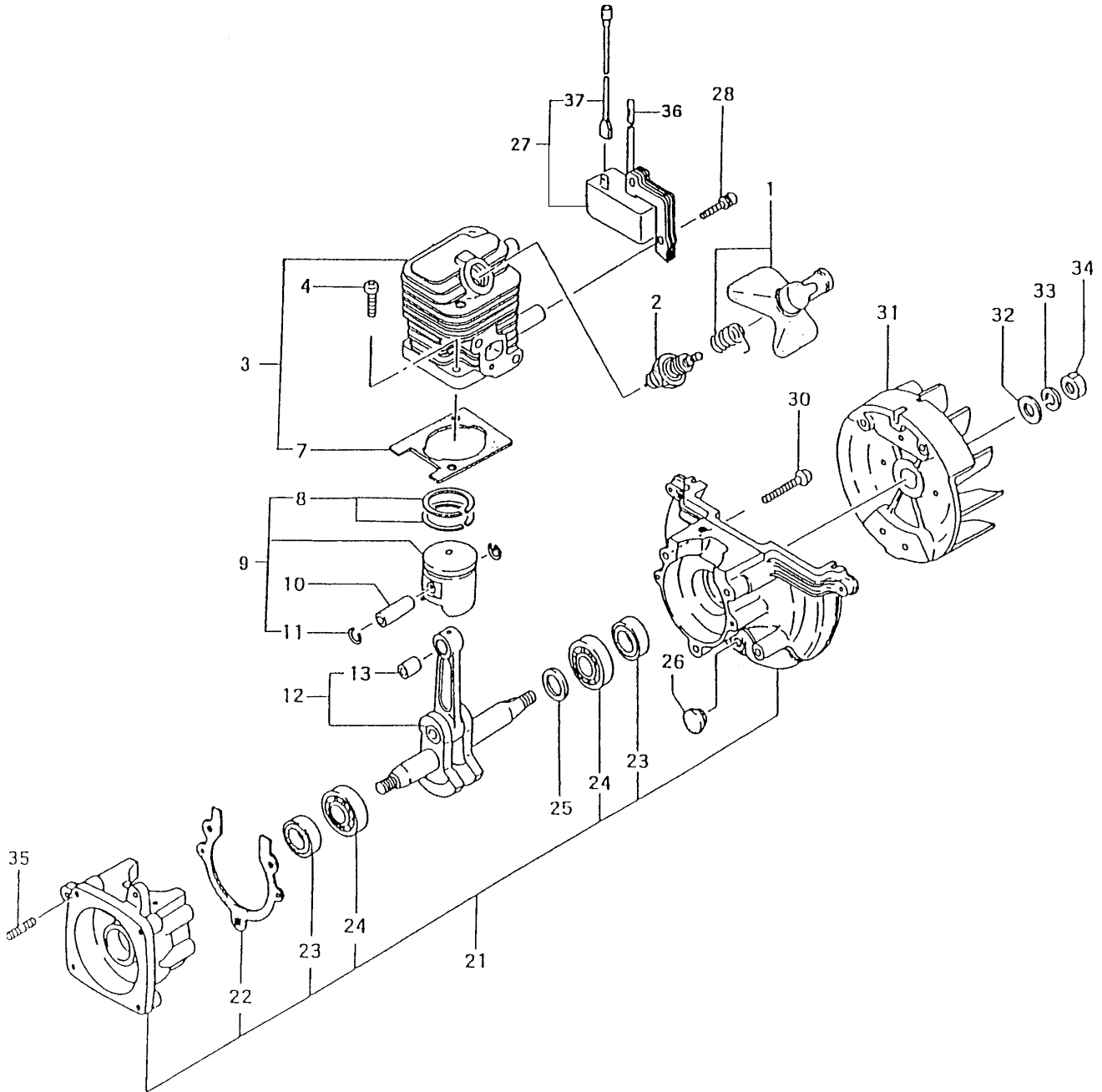
Specifications

Engine Displacement cc (cu. in.)	24(1.4)
Power (h.p.)	1.3
Carburetion	Walbro Diaphragm
Ignition System	Transistorized Electronic
Fuel Tank Capacity / fl. oz. (cc)	11.8 (350)
Muffler System	Sound Reduction System
Anti-Vibration	Rear Handle
Clutch System	Heavy-Duty Centrifugal
Rear Handle	Fixed Position
Front Handle	2 Position / Single Post with Guard
Throttle	Squeeze Type Safety Trigger
Blades / inches (mm)	30" (762mm), Single Sided
Dry Weight / lbs. (kg)	10.7 (4.8)

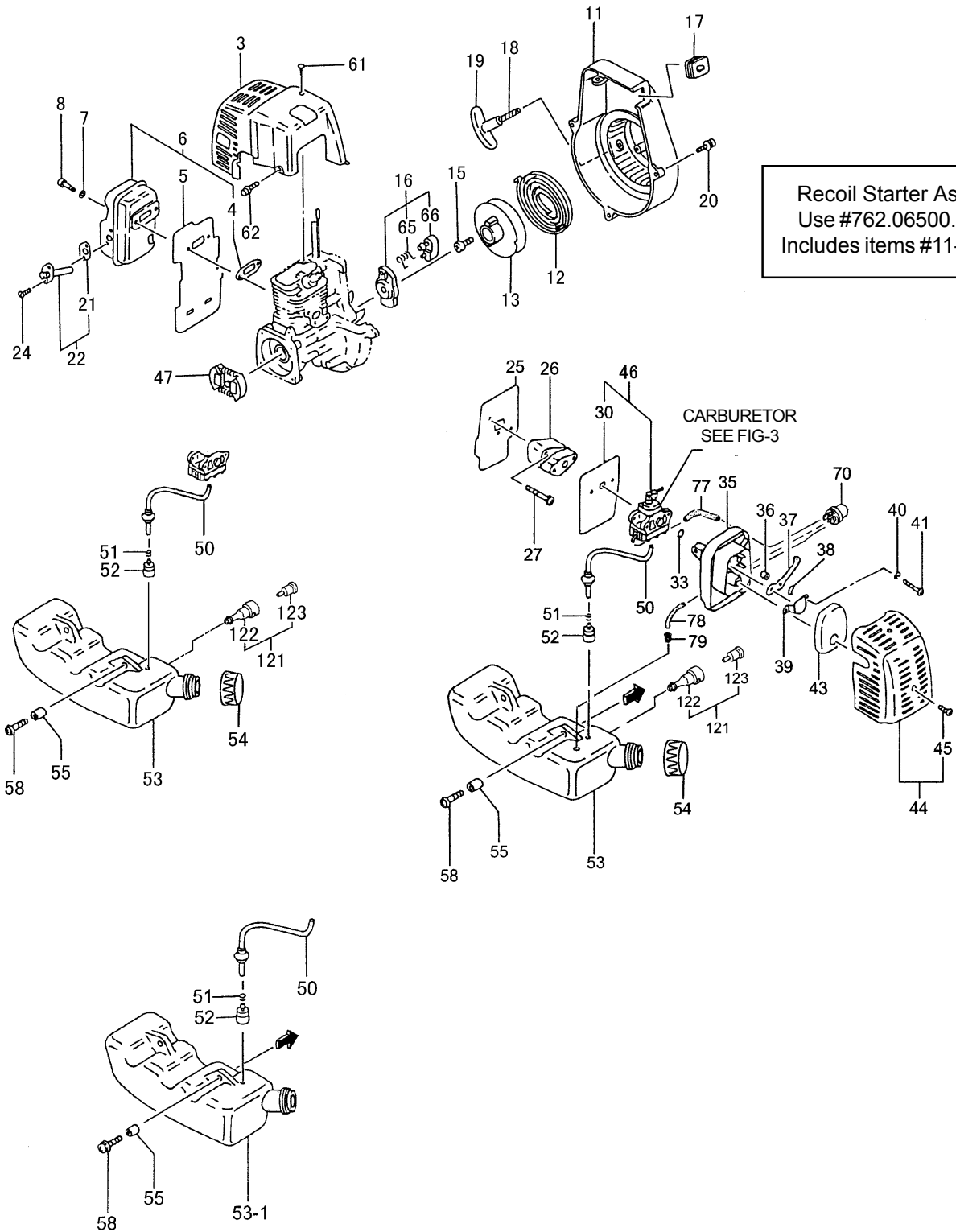
Optional Accessories:

ORDER #	DESCRIPTION
27793	Debris Sweep
Varies	Perfect Mix™ 2-Cycle Engine Oil

All data and specifications are subject to change without notice
For more information, contact:



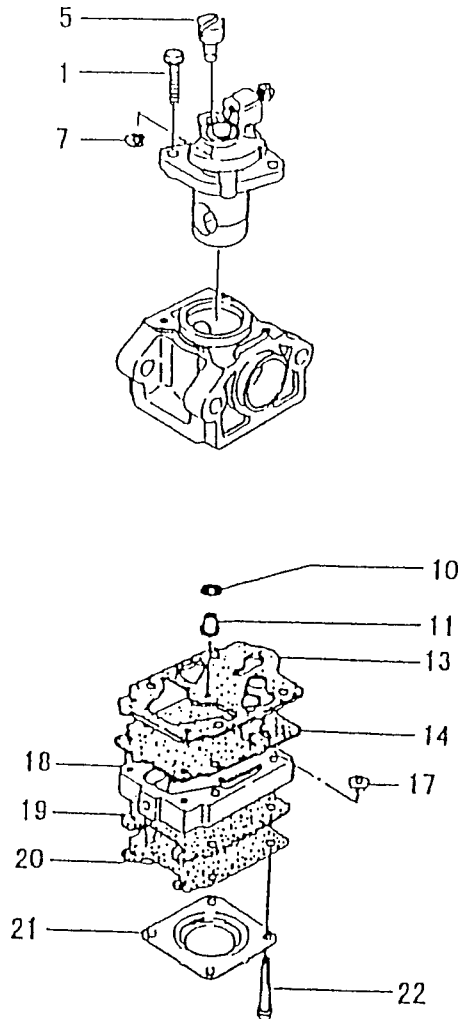
ITEM	PART NUMBER	DESCRIPTION	QTY	COMMENTS
1-1	1570650091	CAP, SPARK PLUG ASS'Y	1	
1-2	0181166021	PLUG, SPARK	1	
1-3	0010660090	SET, CYLINDER	1	Includes cylinder gasket
1-4	99416050201	SCREW, 5X20/WS	2	
1-7	0170650020	GASKET, CYLINDER	1	
1-8	04101601200	RING, PISTON	2	
1-9	0300660090	SET, PISTON	1	Includes rings, and circlips
1-10	03701601200	PIN, PISTON	1	
1-11	03901620200	CIRCLIP, PISTON PIN	2	
1-12	04606500801	CRANKSHAFT	1	
1-13	99962081225	BEARING, NEEDLE, F-810	1	
1-21	0720650090	CRANKCASE ASS'Y	1	Crankcase assy includes bearings, seals and gasket.
1-22	09006500200	GASKET, CRANKCASE	1	
1-23	99966122206	SEAL, OIL ISCD12227	2	
1-24	99961600100	BEARING, BALL, #6001	2	
1-25	33000200210	SHIM, 12.2X19X.10	V	*Shims are "as needed" to obtain correct side clearance
1-25	33000200220	SHIM, 12.2X19X.15	V	
1-25	33000200230	SHIM, 12.2X19X.20	V	
1-25	33000200240	SHIM, 12.2X19X.30	V	
1-26	59900601200	CUSHION	1	
1-27	1672153280	COIL, IGNITION	1	
1-28	99416040226	SCREW, WS, 4X22	2	
1-30	99414050301	SCREW, 5X30/S	3	
1-31	1552152380	ROTOR, MAGNETO	1	
1-32	99201080011	WASHER, 8	1	
1-33	99210080012	WASHER, S, 8	1	
1-34	99101080011	NUT, 8	1	
1-35	10002100200	BOLT, STUD, 6X22	2	
1-36	25006500200	TUBE, INSULATOR	1	
1-37	1780650080	CORD, STOP COMPLETE	1	



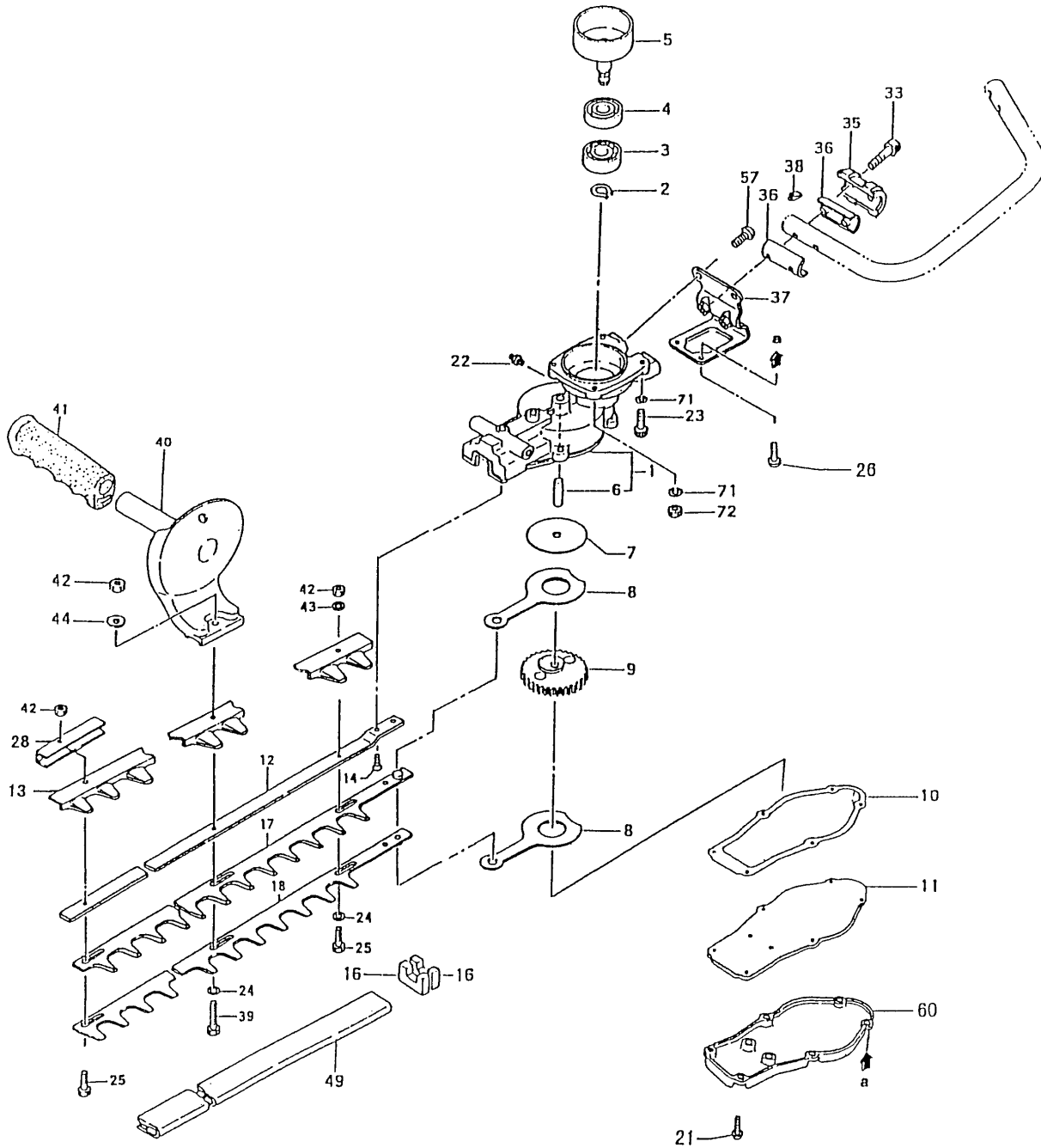
MUFFLER, FUEL SYSTEM, STARTER, AIR CLEANER • FIGURE 2

ITEM	PART NUMBER	DESCRIPTION	QTY	COMMENTS
2-3	7380660020	PROTECTOR,MUFFLER	1	
2-4	73706500200	GASKET,MUFFLER	1	
2-5	13306500200	SHIELD,HEAT	1	
2-6	7040650090	SET,MUFFLER	1	
2-7	99201050011	WASHER,5	2	
2-8	99051050503	BOLT,HEX,5X50	2	
2-11	1120650080	CASE,FAN	1	
2-12	78006097200	SPRING,RECOIL	1	
2-13	77406097200	PULLEY,STARTER	1	
2-15	8390201020	SCREW,SET	1	
2-16	79806500900	PULLEY,STARTER,ASS'Y	1	
2-17	2030604A202	GROMMET	1	
2-18	78306097200	ROPE,STARTER	1	
2-19	78506410200	HANDLE,STARTER	1	
2-20	99415040162	SCREW,PS,4X16	3	
2-21	75106500200	GASKET,MUFFLER	1	
2-22	7210661190	SET,TAIL PIPE	1	
2-24	99434040081	SCREW,4X8/S	2	
2-25	40306500200	GASKET,INTAKE	1	
2-26	4040650090	SET,CARB INSULATOR	1	
2-27	99416050252	SCREW,5X25WS	2	
2-30	40206500200	GASKET,CARBURETOR	1	
2-33	99967015000	O-RING,P15	1	
2-35	4230650081	BODY,CLEANER	1	
2-36	47006500200	COLLAR	2	
2-37	5280650T20	LEVER,CHOKE	1	
2-38	99204080030	WASHER,8	1	
2-39	47601700200	BOARD,BLOW OVER CHECK	1	
2-40	99210050012	WASHER,S,5	2	
2-41	99011050602	SCREW,5X60	2	
2-43	4460650020	ELEMENT,CLEANER	1	
2-44	4520660090	COVER,CLEANER	1	
2-45	3800637C200	BOLT,CLEANER COVER	1	
2-46	4550650090	CARBURETOR,SET	1	Before S/N U244500
2-46	4550651A90	CARBURETOR	1	S/N U244501 and after
2-47	2770634F900	CLUTCH,ASS'Y	1	

ITEM	PART NUMBER	DESCRIPTION	QTY	COMMENTS
2-50	2230650090	PIPE,FUEL,ASS'Y	1	
2-51	68000731201	CLIP 6.3	1	
2-52	6750404280	FILTER,FUEL	1	
2-53	5910650000	TANK,FUEL PIPE,ASS'Y	1	Before S/N T246070
2-53	5910661321	TANK,FUEL	1	From S/N T246071 to S/N U244500
2-53	5910651A21	TANK,FUEL	1	S/N U244501 and after
2-54	5950650A90	TANK CAP	1	Before S/N T246070
2-54	5950656B90	CAP,FUEL BLACK,NON VENT	1	S/N T246071 and after
2-55	65900801200	COLLAR	2	
2-58	99463050185	BOLT,HEX 5X18PS	2	
2-61	99072045164	SCREW,TAPPING,4.5X16	1	
2-62	99425040128	BOLT,PS,4X12	2	
2-65	79006097200	SPRING,STARTER PAWL	1	
2-66	7880650020	PAWL,STARTER	1	
2-70	44225143800	PUMP,PRIMING ASS'Y	1	S/N U244501 and after
2-77	70002504080	PIPE,FUEL,2.5X4X80	1	S/N U244501 and after
2-78	7000250406	PIPE,FUEL,2.5X4X65	1	S/N U244501 and after
2-79	53432710200	GROMMET,FUEL PIPE	1	S/N U244501 and after
2-121	5640661190	VENT,AIR ASS'Y	1	
2-122	5650441020	PIPE,AIR VENT	1	
2-123	6460661290	AIR VENT VALVE ASSY	1	



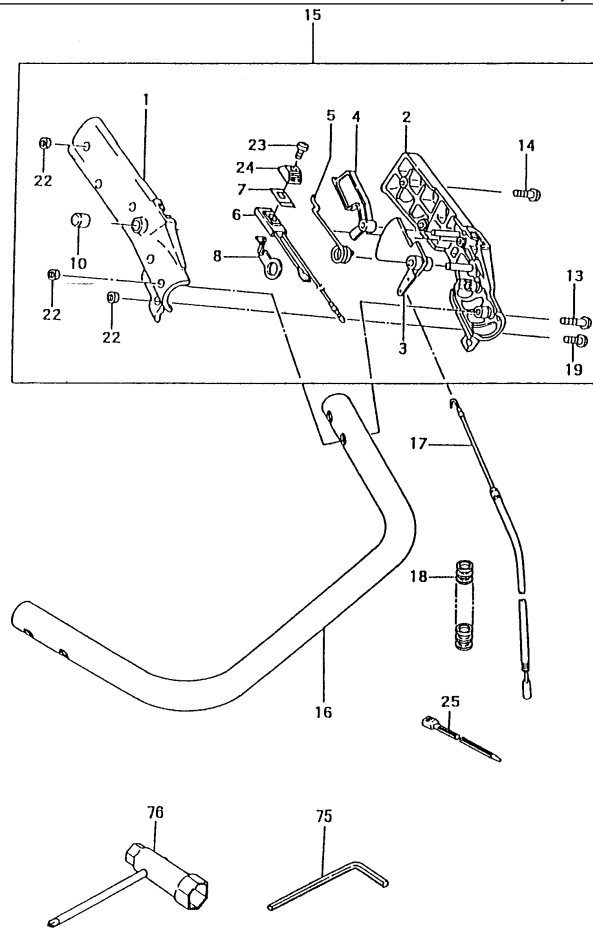
ITEM	PART NUMBER	DESCRIPTION	QTY	COMMENTS
3-0	4550650090	CARBURETOR,SET	1	Before S/N U244500
3-0	4550651A90	CARBURETOR	1	S/N U244501 and after
3-1	54825140200	SCREW,THROTTLE SET	2	
3-5	53925120200	SWIVEL	1	* Contained in Carb Repair Kit
3-7	48925100200	RING,STOP	1	P/N 650-25124-900 (Not available individually)
3-10	55025100200	O-RING	1	
3-11	5992000W35	JET,MAIN,#35	1	Before S/N U244500
3-11	599200BW34	JET,MAIN,LONG,#34.5	1	S/N U244501 and after
3-13	~ ~ ~	*GASKET,PUMP	1	
3-14	~ ~ ~	*DIAPHRAGM,PUMP	1	
3-17	~ ~ ~	*SCREEN,INLET	1	
3-18	5752518280	BODY,PUMP	1	Before S/N U244500
3-18	5752514780	BODY,PUMP ASS'Y	1	S/N U244501 and after
3-19	~ ~ ~	*GASKET,DIAPHRAGM	1	Before S/N U244500
3-19	~ ~ ~	*GASKET,DIAPHRAGM	1	S/N U244501 and after
3-20	~ ~ ~	*DIAPHRAGM,METERING	1	
3-21	47625004200	COVER,DIAPHRAGM	1	
3-22	54825101200	SCREW,SET	4	



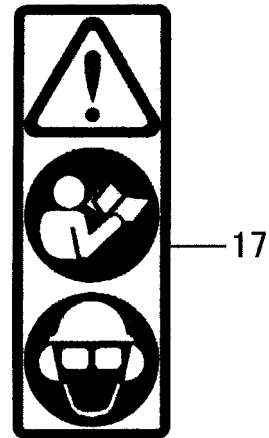
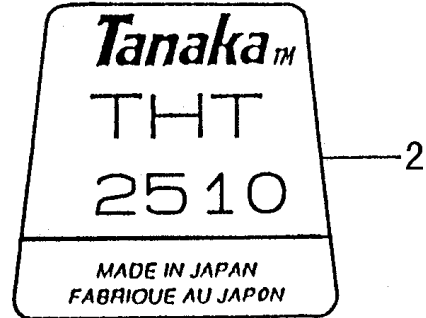
GEAR CASE, HANDLE, CUTTER BLADES • FIGURE 4

ITEM	PART NUMBER	DESCRIPTION	QTY	COMMENTS
4-1	3003318B810	CASE, GEAR	1	
4-2	99350015002	RING, STOP, C-15 EX	1	
4-3	99961600200	BEARING, BALL, #6002	1	
4-4	99961600202	BEARING, BALL, #6002Z	1	
4-5	28833180801	DRUM, CLUTCH	1	
4-6	30533160200	SHAFT, GEAR	1	
4-7	07533160200	PLATE, GUIDE	1	
4-8	1013319020	ROD, CAM	2	
4-9	3073318020	GEAR, 2	1	
4-10	30333160200	GASKET, GEARCASE	1	
4-11	6303316020	COVER, GEAR CASE	1	
4-12	1223318021	GUIDE, CUTTER 30"	1	
4-13	1363318B20	PLATE, PROTECTION	1	Before S/N U244500
4-13	1363318120	PLATE, PROTECTION	1	S/N U244501 and after
4-14	99052060165	BOLT, HEX, 6X16	2	
4-16	08533160200	SEAL, GREASE A	2	
4-17	1213315A20	BLADE, CUTTER, "B"	1	
4-18	1203315A20	BLADE, CUTTER, "A"	1	
4-21	99461040124	BOLT, HEX 4X12	6	
4-22	30032250801	FITTING, GREASE	1	
4-23	99051060143	BOLT, HEX, 6X14	2	
4-24	12933202201	WASHER, 7	5	
4-25	1243320221	BOLT, CUTTER FIXING, A	4	
4-26	99461040155	BOLT, HEX, 4X15	2	
4-28	1283790420	HOLDER, BLADE	1	Before S/N U244500
4-28	12833202200	HOLDER, BLADE	1	S/N U244501 and after
4-33	99051050353	BOLT, HEX HOLE, 5X35	2	
4-35	0573323420	HOLDER, HANDLE	1	
4-36	06033250201	DAMPER, RUBBER	2	
4-37	0583318080	BRACKET, HANDLE	1	
4-38	1760062W201	TERMINAL, GROUNDING	1	
4-39	12533202205	BOLT, CUTTER FIXING B	1	
4-40	0513318B80	HANDLE, B	1	
4-41	1653313020	HANDLE, GRIP, A	1	
4-42	1233317A20	NUT, CUTTER FIXING	5	S/N Y004401~
4-43	99201060011	WASHER, 6	4	
4-44	99201060011	WASHER, 6	1	
4-49	1383318B21	COVER, CUTTER, 30"	1	Before S/N V026060
4-49	1383321520	COVER, CUTTER, 30"	1	S/N V026061 and after
4-57	99461050125	BOLT, HEX 5X12/S	2	
4-60	3013316020	CASE, GEAR, B	1	
4-71	99210060012	WASHER, S, 6	4	
4-72	99101060011	NUT, 6	2	

HANDLE, THROTTLE, TOOLS • FIGURE 5



ITEM	PART NUMBER	DESCRIPTION	QTY	COMMENTS
5-1	0533323122	GRIP, HANDLE "A"	1	
5-2	0543323123	GRIP, HANDLE "B"	1	
5-3	23033210201	LEVER, THROTTLE	1	
5-4	23133210200	LEVER, SAFETY	1	
5-5	06132600201	SPRING, THROTTLE LEVER	1	
5-6	1703318080	SWITCH, STOP	1	
5-7	9253253020	DECAL, STOP BUTTON	1	
5-8	31937900200	TERMINAL, EARTH	1	
5-10	7653212020	CAP	1	
5-13	99416040301	SCREW 4 X 30 / WS	2	
5-14	99416040251	SCREW, 4X25/WS	1	
5-15	0553318B91	ASSY, HANDLE GRIP	1	
5-16	0503318080	HANDLE, A	1	
5-17	8850650J80	WIRE, THROTTLE	1	
5-18	1640701650	TUBE, PROTECTION, 7X 165	1	
5-19	99416040161	SCREW 4 X 16 /WS	3	
5-22	99178040010	NUT, LOCK 4	6	
5-23	99011030101	SCREW, 3X10	1	
5-24	2581165020	BUTTON, STOP	1	
5-25	19833130200	CLAMP, CORD	1	
5-75	81320000200	WRENCH, HEX, 4	1	
5-76	03629331501	SPANNER, COMBI	1	



ITEM	PART NUMBER	DESCRIPTION	QTY	COMMENTS
6-1	95037900200	DECAL, PRO-FORCE A	1	
6-2	9060661120	PLATE, NAME, THT-2510	1	
6-5	95137900200	DECAL, PRO-FORCE	1	
6-8	91106500200	DECAL, SRS	1	
6-17	9203246620	DECAL, CAUTION	1	

Date: June 2001

Model & Serial: THT-2100/THT-2120/THT-2510/THT-2520/THT-2540/HTD-2522PF/HTD-2526PF/HTD-2530PF/HTS-2530PF.

All units produced after serial number W100101.

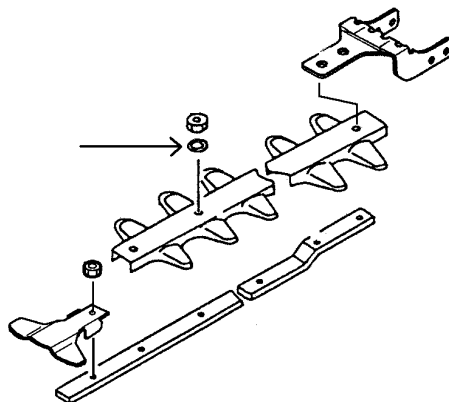
Reason: When these units are fitted with the aluminum safety shield, some experience loosening of the blade jam nuts. A flat washer has been added between the nut and the aluminum shield to help prevent the nut from becoming loose.

Models THT-2100, 2120, 2510 and HTD-2526PF, 2522PF require 3 washers.

Models THT-2520, 2540 and HTS-2530PF and HTD-2530PF require 2 washers

Part Number Changes:

Old Part #	New Part #	Description	Remarks
992-01060-011		Washer	



Tanaka is marketed exclusively by:



Date: January, 2002

Model & Serial: All THT, HTD, HTS, TPH hedgetrimmer models.

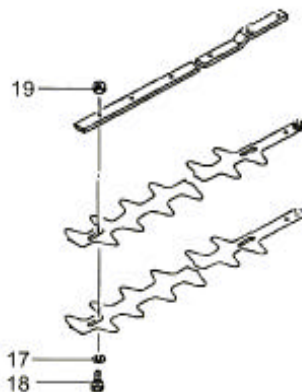
All units after serial number Y004401

Reason: All future production of hedgetrimmer models will utilize a blade-retaining nut that is of the locking variety. These nuts are oblong on one side to prevent loosening during use, but can be removed and re-installed without losing their locking ability.

When adjusting blade-fastening hardware, thread the bolt (18) through the blades and guide bar from the bottom, to a point where the flat washer (17), is still able to rotate, (usually to seat, and then backed off between ¼ and ½ revolution). Then install the lock nuts on the topside, tightening them while holding the bolt in place. Tighten all nuts, and then re-check for adjustment prior to operation. A lubricating agent, such as WD-40 should also be used to prevent sap build-up and premature wear.

Part Number Changes:

Old Part #	New Part #	Description	Remarks
123-33202-200	123-3317A-20	Lock Nut	Reference #19



Tanaka is marketed exclusively by:

