

SPARE PARTS CATALOGUE

POWER AUGER

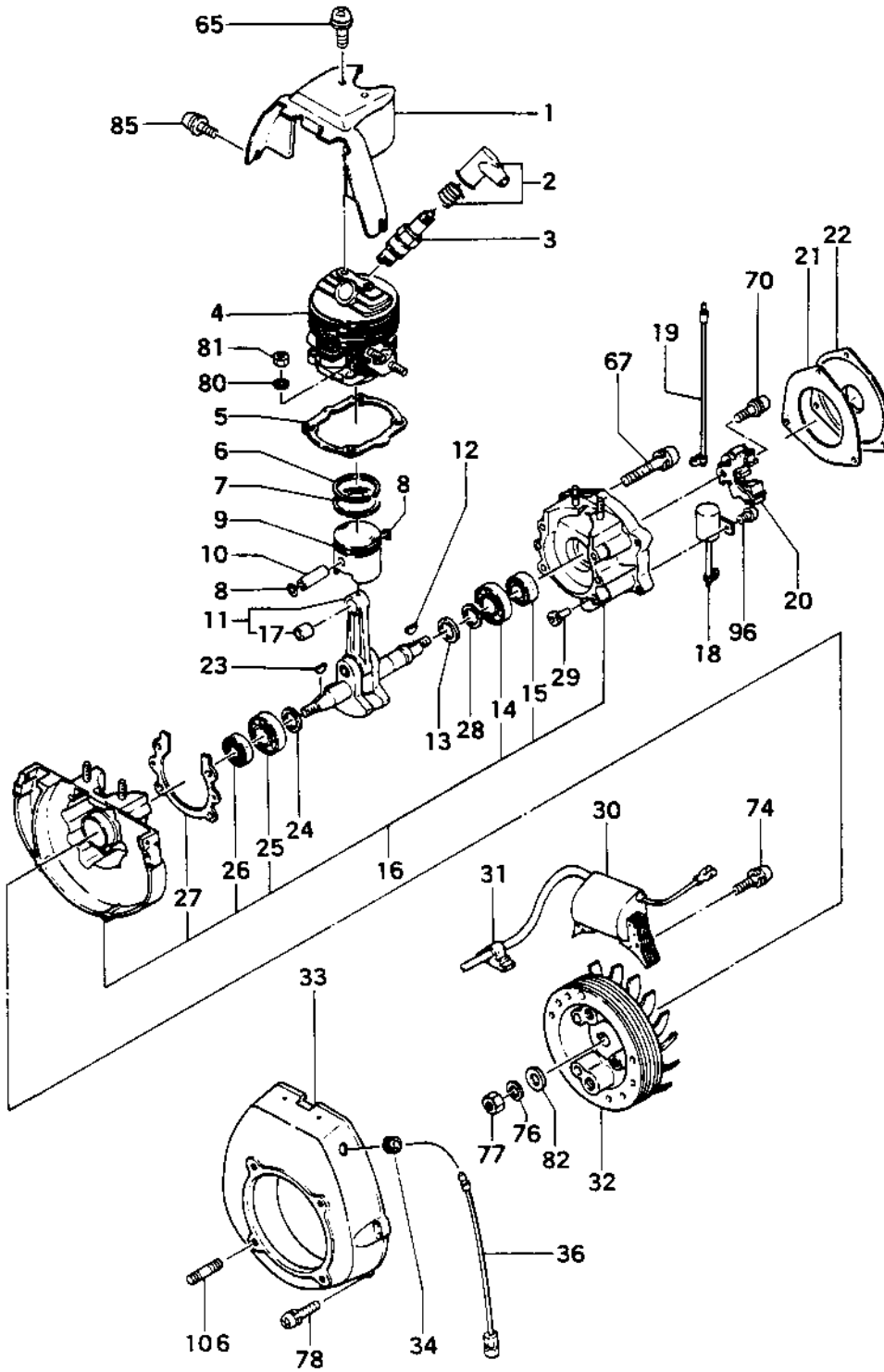
MODEL

TIA-302

SERIAL No. -B229282

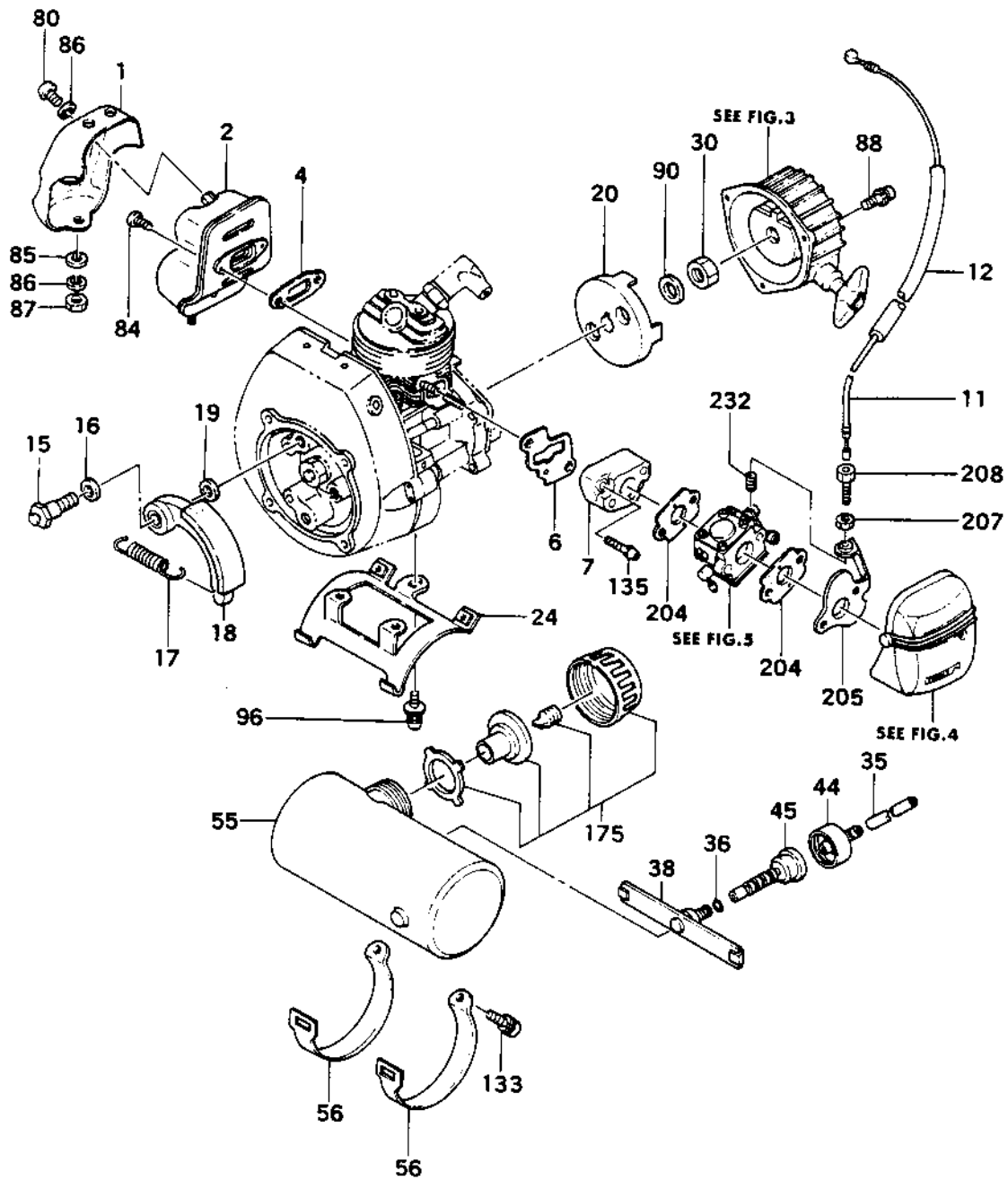


FIG.1 ENGINE



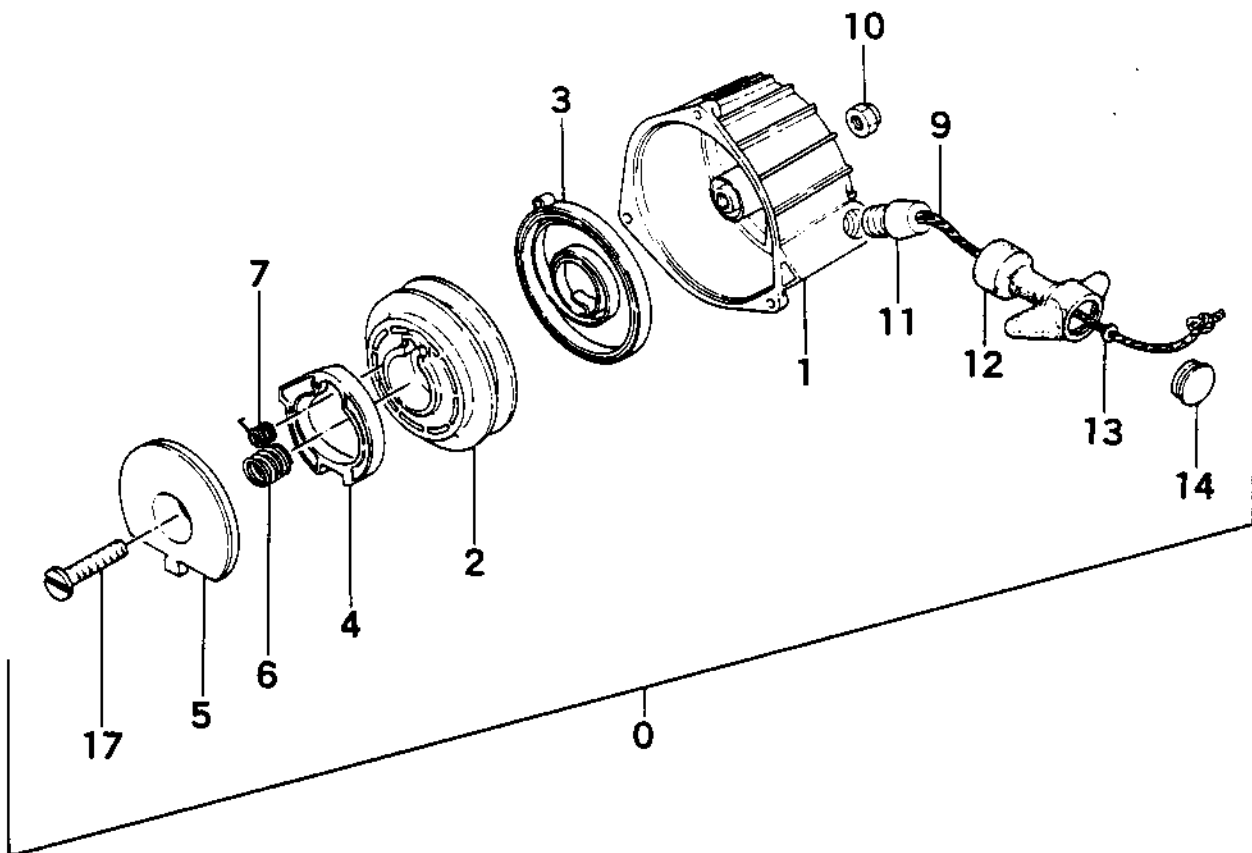
REFERENCE NUMBER	PRODUCTION NUMBER	PART NAME	QUANTITY	SERIAL NUMBER	SPARE PART NUMBER
FIG. 1 ENGINE					
1-001	016-01400-213	CYLINDER SHROUD	1		016 0222 3
1-002	157-04000-900	SPARK PLUG CAP ASS'Y	1		157 0050 0
1-003	018-00801-200	SPARK PLUG B-7	1		018 0060 1
1-004	002-01401-805	CYLINDER COMP.	1		002 0270 9
1-005	017-01400-204	CYLINDER GASKET	1		017 0070 1
1-006	040-01000-201	PISTON RING /TOP	1		040 0010 9
1-007	041-01000-201	PISTON RING	1		041 0020 3
1-008	039-00000-201	PISTON PIN CIRCLIP	2		039 0000 2
1-009	031-01400-204	PISTON 36	1		031 0083 9
1-010	037-01400-200	PISTON PIN	1		037 0030 9
1-011	046-01400-823	CRANK SHAFT COMP.	1		046 0294 9
1-012	068-00300-200	WOOD-RUFF KEY 3X10X3.7	1		068 0010 1
1-013	070-00601-201	CRANK SHAFT WASHER 12X18	1		070 0000 1
1-014	999-61600-100	BALL BEARING #6001	1		999 6108 8
1-015	999-66122-266	OIL SEAL 12227	1		999 6613 5
1-016	072-01400-900	CRANK CASE ASS'Y	1		072 0270 0
1-017	999-62091-325	NEEDLE BEARING F-910	1		999 6207 2
1-018	177-20712-802	CONDENSER COMP.	1		177 0160 6
1-019	173-01500-800	PRIMARY CORD COMP.	1		173 0140 4
1-020	160-20712-900	CONTACT BREAKER B COMP.	1		160 0010 6
1-021	810-01400-200	RECOIL STARTER GASKET	1		810 0030 2
1-022	091-0141A-200	PARTITION PLATE	1		091 0030 5
1-023	068-10100-200	WOOD-RUFF KEY 3X13X4.5	1		068 0060 6
1-024	070-02401-201	CRANK SHAFT WASHER 15X22	1		070 0020 5
1-025	999-61600-200	BALL BEARING #6002	1		999 6111 2
1-026	999-66152-500	OIL SEAL 15257	1		999 6622 3
1-027	090-01400-205	CRANK CASE GASKET	1		090 0071 5
1-028	330-00200-210	GEAR SHAFT SHIM 0.10	V		330 0001 1
1-028	330-00200-220	GEAR SHAFT SHIM 0.15	V		330 0002 0
1-028	330-00200-230	GEAR SHAFT SHIM 0.20	V		330 0003 9
1-028	330-00200-240	GEAR SHAFT SHIM 0.30	V		330 0004 8
1-029	203-01400-202	PRIMARY CORD GROMMET	1		203 0030 4
1-030	167-20712-804	IGNITION COIL COMP.	1		167 0181 6
1-031	198-01400-200	CORD CLAMP	1		198 0140 5
1-032	155-20713-805	MAGNETO ROTOR COMP.	1		155 0250 2
1-033	112-01401-201	FAN CASE	1		112 0641 3
1-034	202-01003-201	SECONDARY CORD GROMMET	2		202 0011 2
1-036	178-01560-802	STOP CORD COMP.	1		178 0300 7
1-065	994-13050-081	SCREW 5X8/P	2		994 1011 9
1-067	994-14050-251	SCREW 5X25/S	4		994 1036 8
1-070	994-17040-101	SCREW 4X10/W	2		994 1078 4
1-074	994-14040-181	SCREW 4X18/S	2		994 1024 3
1-076	992-10080-012	S. WASHER 8	1		992 1026 7
1-077	981-01080-011	NUT 8	1		981 0004 6
1-078	994-14040-181	SCREW 4X18/S	4		994 1024 3
1-080	992-10050-012	S. WASHER 5	4		992 1012 4
1-081	991-01050-011	HEX. NUT 5	4		991 0015 5
1-082	992-01080-011	WASHER 8	1		992 0047 1
1-085	994-13040-081	SCREW 4X8/P	2		994 1008 5
1-096	990-11040-081	SCREW 4X8	1		990 1026 3
1-106	100-04001-200	STUD BOLT 6X36	4		100 0100 4

FIG.2 ENGINE SYSTEM



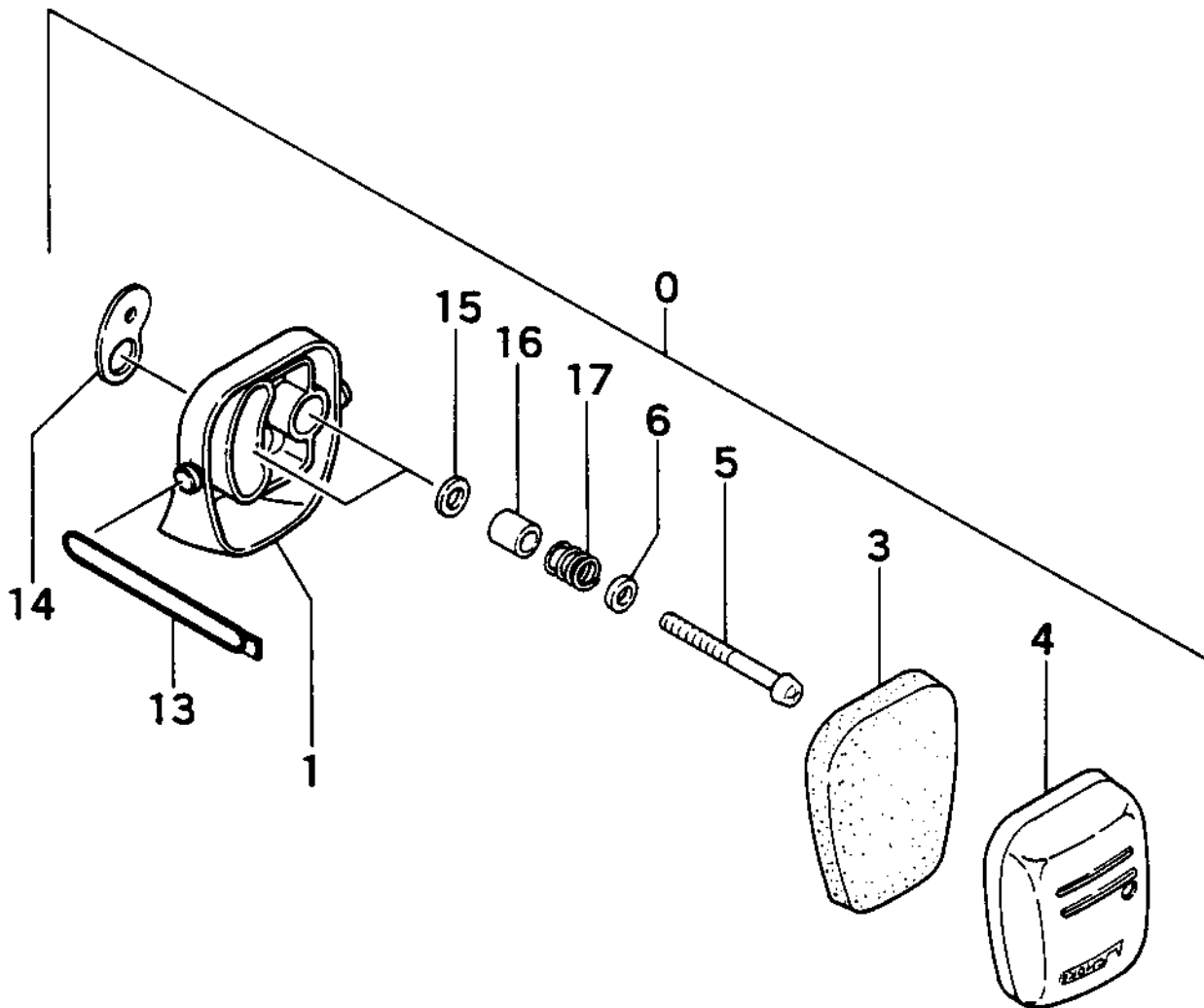
REFERENCE NUMBER	PRODUCTION PART NUMBER	PART NAME	QUANTITY	SERIAL NUMBER	SPARE PART NUMBER
FIG.2 ENGINE SYSTEM					
2-001	738-01560-200	MUFFLER PROTECTOR	1	738 0410	1
2-002	706-01560-800	MUFFLER COMP.	1	706 0750	5
2-004	737-01400-200	MUFFLER GASKET	1	737 0130	9
2-006	403-00601-202	INLET MANIFOLD GASKET	1	403 0040	3
2-007	404-00620-803	CARBURETOR INSULATOR COMP.	1	404 0050	7
2-011	885-01560-811	THROTTLE WIRE COMP.	1	885 1143	4
2-012	264-01560-201	VINYL TUBE	1	264 0060	0
2-015	357-01400-201	CLUTCH STEP BOLT	2	357 0020	1
2-016	358-10112-200	CLUTCH WASHER A	2	358 0050	9
2-017	342-01400-201	CLUTCH SPRING	1	342 0050	4
2-018	290-01400-801	CLUTCH SHOE COMP.	2	290 0051	3
2-019	359-10112-203	CLUTCH WASHER B	2	359 0021	4
2-020	774-0141A-202	STARTER PULLEY	1	774 0091	8
2-024	607-01560-800	FUEL TANK BRACKET	1	607 0150	3
2-030	066-00601-200	FLYWHEEL NUT	1	066 0020	4
2-035	700-03005-160	FUEL PIPE 3X5X160	1	700 0660	7
2-036	680-04019-210	CLIP ?	1	680 0162	3
2-038	675-04001-900	PUMP FILTER BODY ASS'Y	1	675 0100	5
2-044	500-33202-205	RUBBER PIPE CAP	1	500 0171	6
2-045	678-00601-201	RUBBER PIPE	1	678 0111	2
2-055	591-00764-800	TANK COMP.	1	591 1600	6
2-056	648-00206-203	TANK HOLDING BAND	2	648 0020	8
2-080	990-11050-061	SCREW 5X6	1	990 1059	1
2-084	990-70060-161	SCREW FT 6X16	2	990 7005	4
2-085	992-01050-011	WASHER 5	1	992 0035	6
2-086	992-10050-012	S.WASHER 5	2	992 1012	4
2-087	991-01050-011	HEX. NUT 5	1	991 0015	5
2-088	994-14040-161	SCREW 4X16/S	3	994 1023	4
2-090	065-00000-200	FLYWHEEL WASHER	1	065 0000	3
2-096	994-15060-121	SCREW 6X12/PS	1	994 1066	9
2-133	994-14050-201	SCREW 5X20/S	2	994 1033	1
2-135	994-14050-241	SCREW 5X24/S	2	994 1035	9
2-175	595-0062A-910	TANK CAP ASS'Y	1	595 0041	4
2-204	402-00601-202	CARBURETOR GASKET	2	402 0010	5
2-205	436-0062W-251	AIR CLEANER BASE	1	436 0031	5
2-207	991-01060-013	NUT 6	1	991 0024	3
2-208	894-01401-201	OUTER RECEIVER	1	894 0010	0
2-232	688-11501-200	RETURN SPRING	1	688 0030	7

FIG.3 RECOIL STARTER



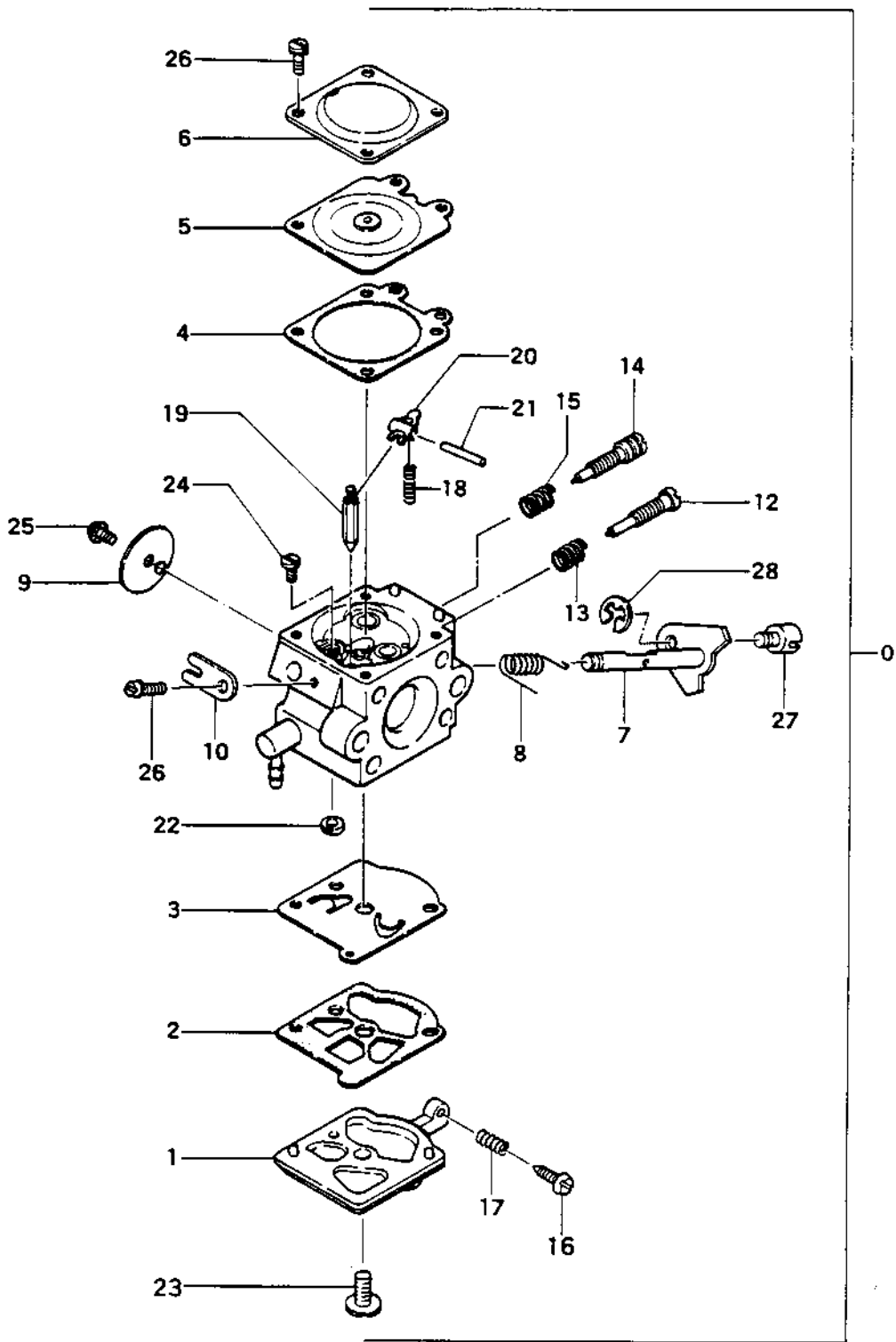
REFERENCE NUMBER	PRODUCTION PART NUMBER	PART NAME	QUANTITY	SERIAL NUMBER	SPARE PART NUMBER
FIG.3 RECOIL STARTER					
3-000	756-01500-902	RECOIL STARTER ASS'Y	1	756 0290	3
3-001	772-01500-200	RECOIL STARTER BODY	1	772 0360	3
3-002	769-01500-801	STARTER ROPE REEL	1	769 0021	1
3-003	779-01500-200	RECOIL SPRING	1	779 0060	3
3-004	788-01500-200	STARTER PAWL	1	788 0040	5
3-005	837-01500-200	FRICTION PLATE	1	837 0010	3
3-006	836-01500-200	FRICTION SPRING	1	836 0010	6
3-007	832-01500-200	RETURN SPRING	1	832 0010	8
3-009	793-01500-201	STARTER ROPE	1	783 0051	6
3-010	991-41050-022	CAP NUT 5	1	991 4000	9
3-011	780-10118-200	ROPE GUIDE	1	780 0100	4
3-012	785-10118-200	STARTER HANDLE	1	785 0090	9
3-013	992-01040-011	WASHER 4	1	992 0031	0
3-014	835-10118-200	STARTER HANDLE CAP	1	835 0020	8
3-017	839-01500-200	SET BOLT	1	839 0000	0

FIG.4 AIR CLEANER



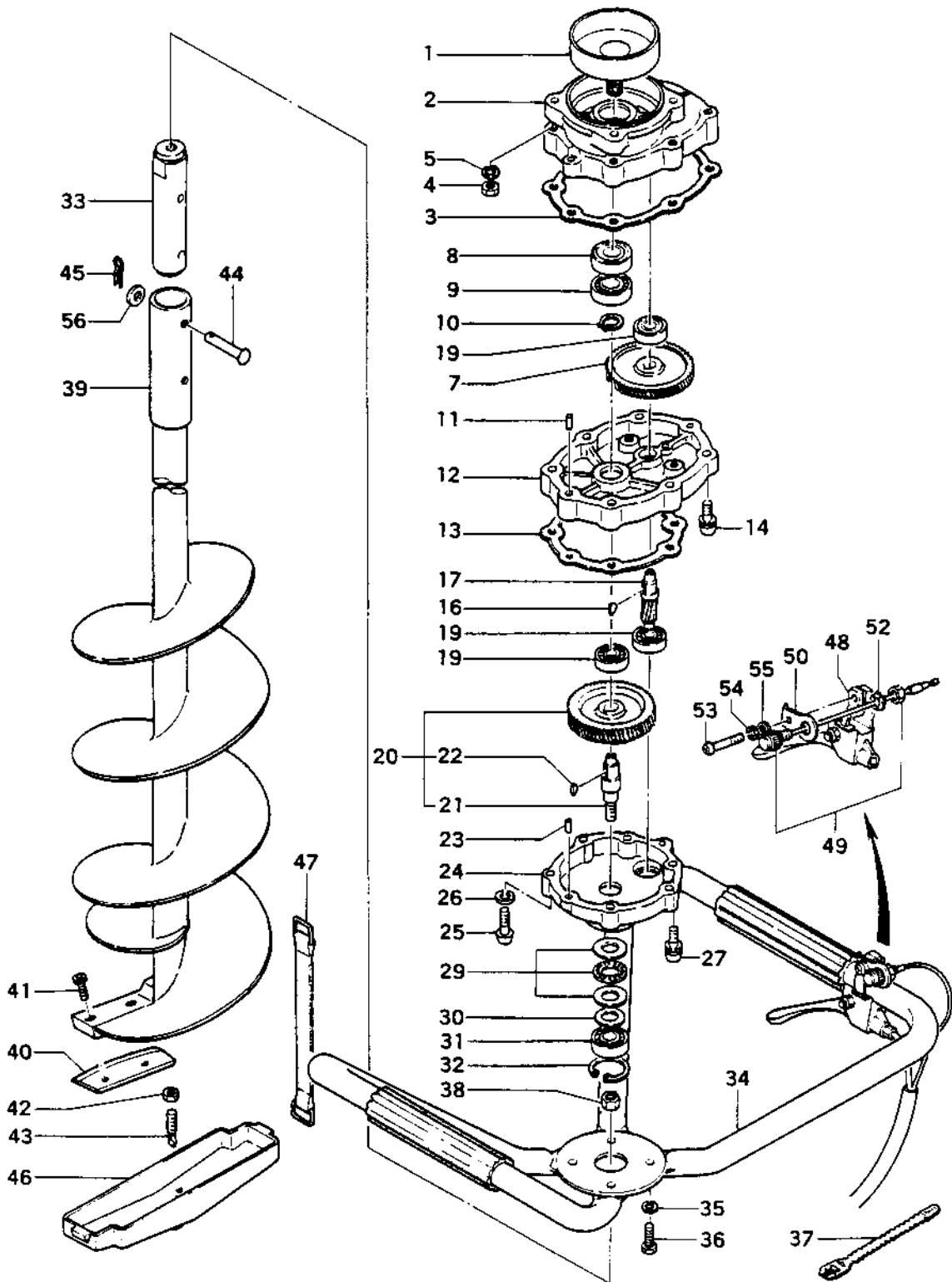
REFERENCE NUMBER	PRODUCTION PART NUMBER	PART NAME	QUANTITY	SERIAL NUMBER	SPARE PART NUMBER
FIG.4 AIR CLEANER					
4-000	410-0062A-901	AIR CLEANER ASS'Y	1		410 0160 2
4-001	423-00601-203	AIR CLEANER BODY	1		423 0060 3
4-003	444-00601-201	CLEANER ELEMENT A	1		444 0030 5
4-004	424-00601-202	CLEANER COVER	1		424 0090 1
4-005	990-11050-551	SCREW 5X55	2		990 1104 4
4-006	992-01050-011	WASHER 5	2		992 0035 6
4-013	466-0062A-200	CLEANER BAND	1		466 0010 1
4-014	431-00601-201	CLEANER GASKET	1		431 0020 4
4-015	182-00601-200	SPECIAL WASHER/CLEANER	2		182 0000 9
4-016	454-00601-202	CLEANER FIXING METAL	2		454 0000 7
4-017	432-00601-200	CLEANER SPRING	2		432 0000 7

FIG.5 CARBURETOR



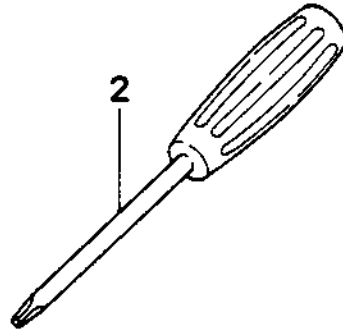
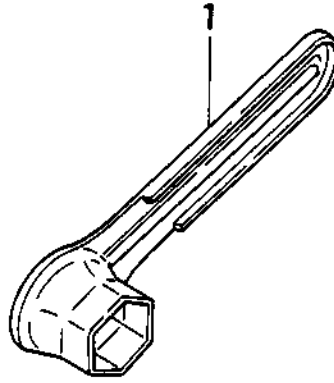
REFERENCE NUMBER	PRODUCTION PART NUMBER	PART NAME	QUANTITY	SERIAL NUMBER	SPARE PART NUMBER
FIG.5 CARBURETOR					
5-000	455-25008-900	CARBURETOR ASS'Y	1	455 1830	8
5-001	575-25008-200	PUMP BODY	1	575 0140	2
5-002	577-25007-200	PUMP GASKET	1	577 0090	8
5-003	576-25006-200	PUMP DIAPHRAGM	1	576 0070	7
5-004	475-25001-200	DIAPHRAGM GASKET	1	475 0080	6
5-005	474-25001-800	METERING DIAPHRAGM	1	474 0070	2
5-006	476-25006-200	DIAPHRAGM COVER	1	476 0130	1
5-007	464-25008-200	THROTTLE SHAFT COMP.	1	464 0070	9
5-008	486-25006-200	THROTTLE SPRING	1	486 0050	5
5-009	488-25008-200	THROTTLE VALVE	1	488 0050	9
5-010	557-25007-200	CLIP-THROTTLE SHAFT	1	557 0030	0
5-012	460-25008-200	HIGH ADJUST SCREW	1	460 0090	5
5-013	485-25003-200	HIGH ADJUST SPRING	1	485 0070	2
5-014	461-25008-200	LOW ADJUST SCREW	1	461 0090	2
5-015	623-25001-200	LOW ADJUST SPRING	1	623 0170	5
5-016	462-25008-200	IDLE ADJUST SCREW	1	462 0080	2
5-017	463-25008-200	IDLE ADJUST SPRING	1	463 0080	9
5-018	477-25007-200	VALVE SPRING	1	477 0080	0
5-019	603-25001-200	NEEDLE VALVE	1	603 0290	6
5-020	473-25001-200	VALVE HINGE	1	473 0060	8
5-021	605-25001-200	HINGE PIN	1	605 0230	8
5-022	578-25006-200	INLET SCREEN	1	578 0030	3
5-023	514-25001-200	SET SCREW	1	514 0010	3
5-024	546-25001-200	HINGE PIN SET SCREW	1	546 0030	0
5-025	467-25003-200	SHUTTER SCREW	1	467 0010	8
5-026	548-25001-200	SET SCREW	5	548 0020	7
5-027	539-25006-200	SWIVEL	1	539 0030	8
5-028	489-25006-200	STOP RING	1	489 0040	9

FIG.6 GEAR CASE & HANDLE

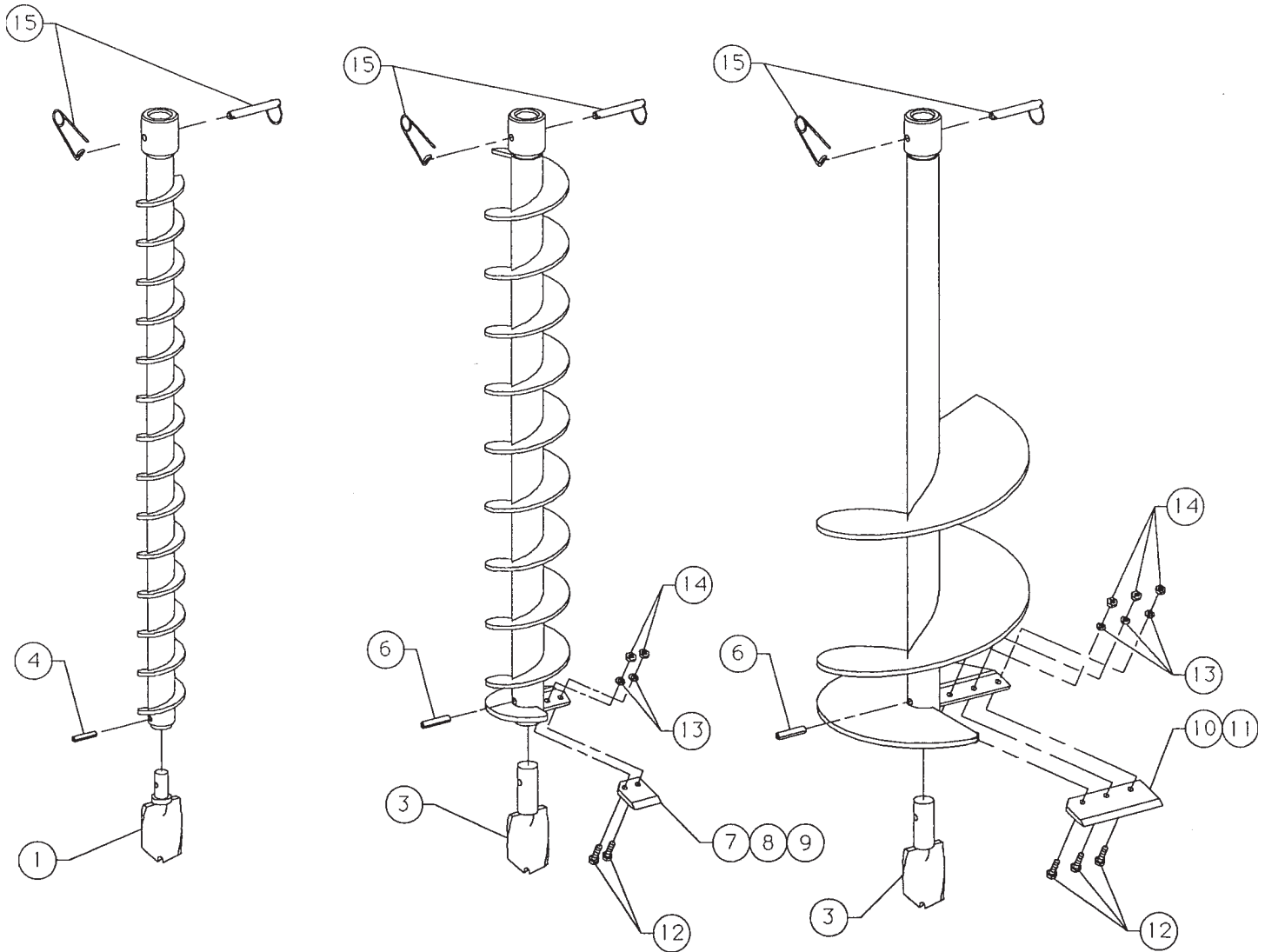


REFERENCE NUMBER	PRODUCTION PART NUMBER	PART NAME	QUANTITY	SERIAL NUMBER	SPARE PART NUMBER
FIG.6 GEAR CASE & HANDLE					
6-001	226-32420-803	CLUTCH HOUSING COMP.	1	226 0110 0	
6-002	200-32420-200	GEAR CASE A	1	200 0120 9	
6-003	204-32401-201	GEAR CASE GASKET B	1	204 0040 8	
6-004	991-01060-011	HEX. NUT 6	4	991 0022 5	
6-005	992-10060-012	S.WASHER 6	4	992 1019 7	
6-007	221-32401-203	GEAR #2	1	221 0040 3	
6-008	999-61620-202	BALL BEARING #6202Z	1	999 6141 3	
6-009	999-61620-200	BALL BEARING #6202	1	999 6139 8	
6-010	950-10110-200	SNAP RING/S15	1	950 0000 4	
6-011	999-05041-201	KNOCK PIN 4X12	2	999 0503 1	
6-012	201-32401-202	GEAR CASE B	1	201 0080 5	
6-013	205-32401-201	GEAR CASE GASKET C	1	205 0040 5	
6-014	994-14050-301	SCREW 5X30/S	2	994 1037 7	
6-016	068-11000-200	WOOD-RUFF KEY 3X15X5.0	1	068 0080 0	
6-017	222-32401-204	GEAR #3	1	222 0060 4	
6-019	999-61600-000	BALL BEARING #6000	3	999 6102 4	
6-020	286-32430-901	GEAR #4 ASS'Y	1	223 0070 8	
6-021	225-32430-210	DRIVE SHAFT	1	225 0121 9	
6-022	068-11000-200	WOOD-RUFF KEY 3X15X5.0	1	068 0080 0	
6-023	999-05041-201	KNOCK PIN 4X12	2	999 0503 1	
6-024	202-32401-203	GEAR CASE C	1	202 0190 2	
6-025	990-11050-501	SCREW 5X50	4	990 1101 7	
6-026	992-10050-012	S.WASHER 5	4	992 1012 4	
6-027	994-14050-301	SCREW 5X30/S	2	994 1037 7	
6-029	999-62173-060	THRUST BEARING 1730	1	999 6236 4	
6-030	230-32420-200	GEAR SHAFT COLLAR A	1	230 0110 1	
6-031	999-61600-302	BALL BEARING #6003Z	1	999 6118 5	
6-032	070-32101-200	CIRCLIP	1	070 0120 8	
6-033	076-32430-200	ADAPTER A	1	076 1250 3	
6-034	047-32430-801	HANDLE COMP. W/GRIP	1	047 0050 6	
6-035	992-10060-012	S.WASHER 6	4	992 1019 7	
6-036	990-21060-181	BOLT 6X18	4	990 2039 6	
6-037	903-32201-200	WIRE CLAMP BAND	1	903 0070 9	
6-038	078-32430-200	LOCK NUT	1	078 0070 6	
6-039	815-32408-800	EARTH AUGER SCREW COMP.	1	815 0070 9	
6-040	816-32408-200	EARTH AUGER CUTTER	2	816 0060 5	
6-041	990-51050-103	HEX. HOLE BOLT 5X10	2	990 5003 8	
6-042	991-01080-011	NUT 8	1	991 0030 4	
6-043	817-32408-210	EARTH AUGER CENTER	1	817 0061 1	
6-044	820-32203-200	PIN	2	820 0030 5	
6-045	821-32203-200	SNAP PIN	2	821 0050 6	
6-046	825-32430-200	CUTTER COVER	1	825 0020 3	
6-047	603-01400-800	FUEL TANK BAND COMP.	1	603 0020 1	
6-048	870-0063A-900	THROTTLE LEVER ASS'Y	1	870 0160 4	
6-049	170-01400-800	STOP BUTTON COMP.	1	170 0120 9	
6-050	640-0062M-200	STOP BUTTON BRACKET	1	640 0010 5	
6-052	992-04080-031	WAVE WASHER 8	1	992 0063 9	
6-053	990-11050-251	SCREW 5X25	1	990 1092 9	
6-054	992-10050-012	S.WASHER 5	1	992 1012 4	
6-055	992-01050-011	WASHER 5	1	992 0035 6	
6-056	992-01080-011	WASHER 8	2	992 0047 1	

FIG.7 TOOLS

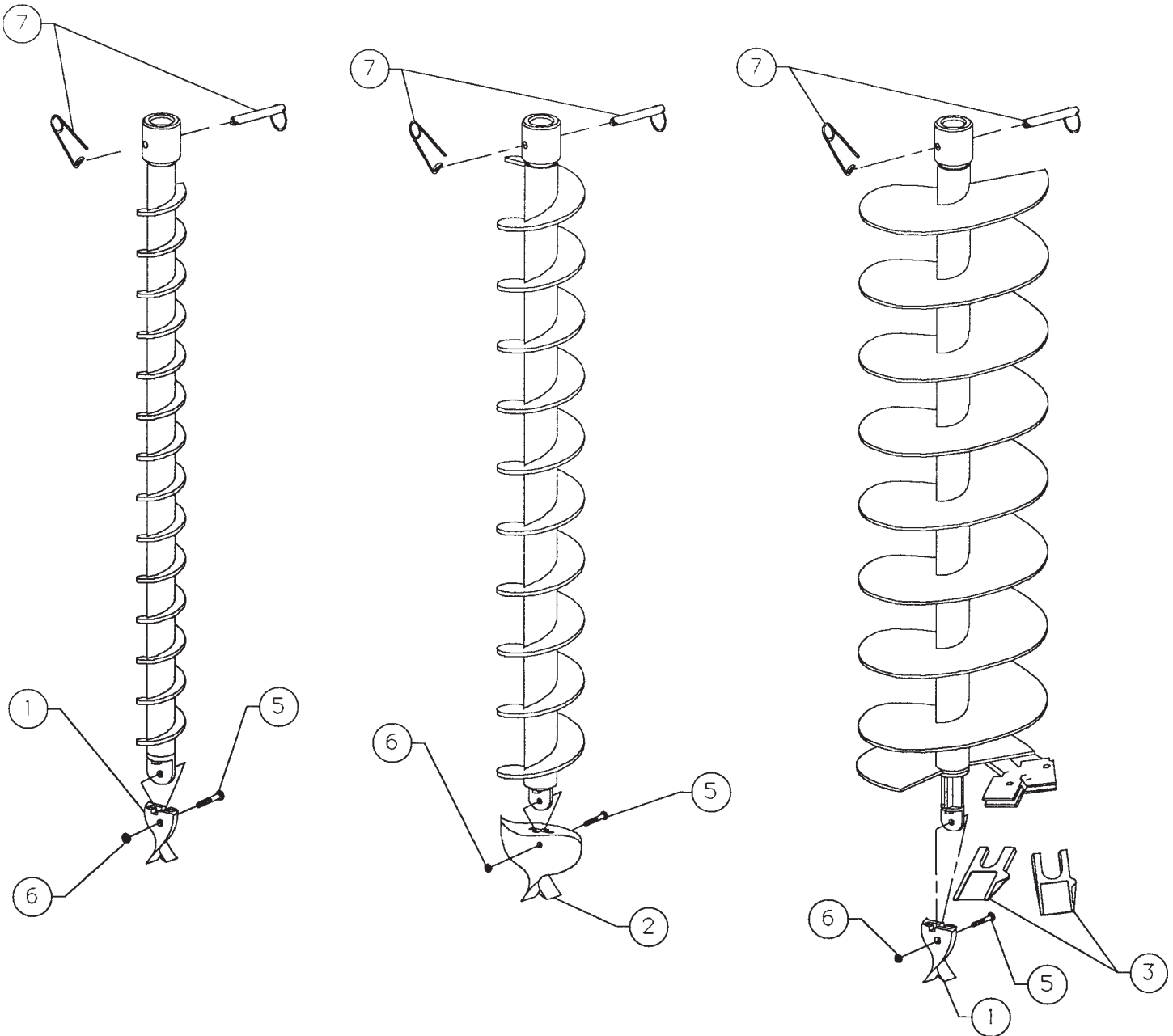


REFERENCE NUMBER	PRODUCTION PART NUMBER	PART NAME	QUANTITY	SERIAL NUMBER	SPARE PART NUMBER
FIG.7 TOOLS					
7-001	150-20000-201	SPARK PLUG BOX SPANNER	1	850 0020 7	
7-002	862-20000-200	PLUS DRIVER 4	1	862 0010 7	

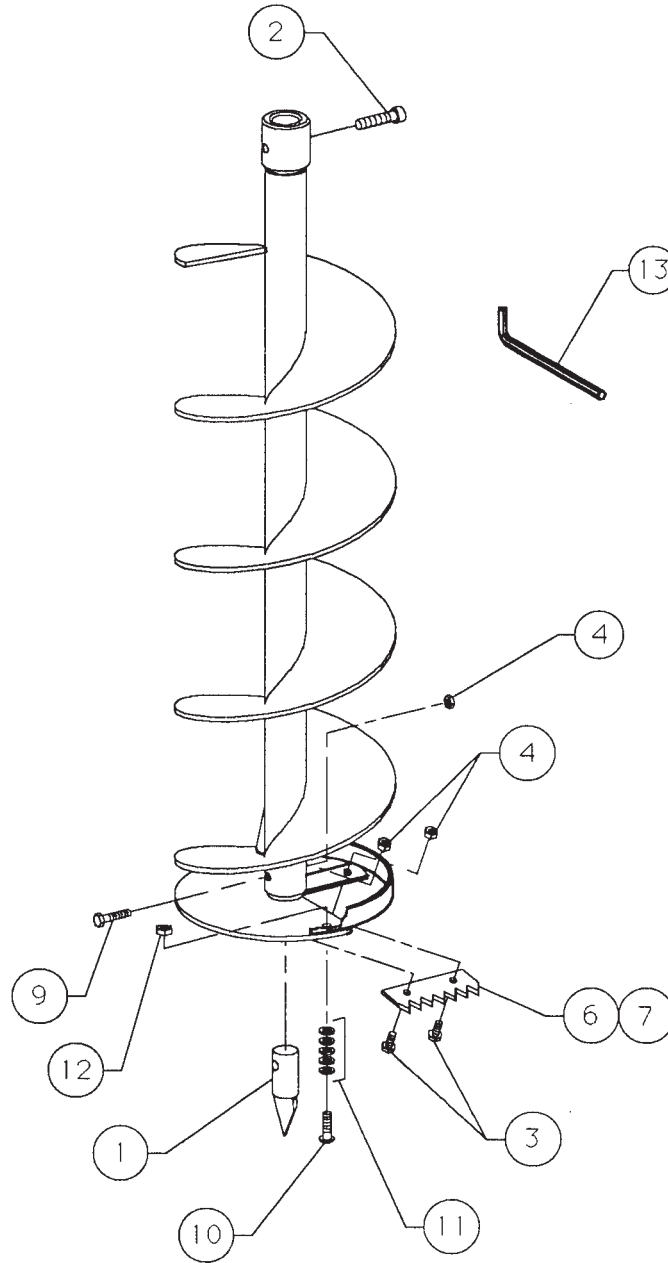


ITEM	PART NUMBER	DESCRIPTION	QTY	APPLICATION	COMMENTS
1	EBF-KIT	BIT, SCREW (EARTH ONLY)	1	EBF-02	
3	EBF-TIP	TIP	1	EBF-04 THRU EBF-12	
4	N/A	PIN, ROLL, 1/4" X 1-1/4"	1	EBF-02	STD HARDWARE ITEM
6	N/A	PIN, ROLL, 5/16" X 1-1/2"	1	EBF-04 THRU EBF-12	STD HARDWARE ITEM
7	CB-04	BLADE, 4"	1	EBF-04	
8	CB-06	BLADE, 6"	1	EBF-06	
9	CB-08	BLADE, 8"	1	EBF-08	
10	CB-10	BLADE, 10"	1	EBF-10	
11	CB-12	BLADE, 12"	1	EBF-12	
12	N/A	SCREW, CAP, HEX, 1/4 UNC X 7/8"	2,3	EBF-04 THRU EBF-12	STD HARDWARE ITEM
13	N/A	WASHER, LOCK, 1/4"	2,3	EBF-04 THRU EBF-12	STD HARDWARE ITEM
14	N/A	NUT, HEX, 1/4-20 UNC	2,3	EBF-04 THRU EBF-12	STD HARDWARE ITEM
15	EBF-PIN	PIN, AUGER	1	ALL AUGERS	
N/A	EBF-EXT	EXTENSION, 15"	1	ALL AUGERS	EXTENSION NOT SHOWN

EBF-02 = 745401, EBF-04 = 745402, EBF-06 = 745403, EBF-08 = 745404, 745405 = EBF-10, 745406 = EBF-12



ITEM	PART NUMBER	DESCRIPTION	QTY	APPLICATION	COMMENTS
1	28295	BIT,SCREW (EARTH ONLY)	1	EBF-02P, EBF-06P, EBF-08P	
2	30059	BIT,SCREW (EARTH ONLY)	1	EBF-04P	
3	28185	TOOTH,PENGO	2	EBF-06P, EBF-08P	HARD FACED
5	N/A	SCREW,CAP,5/16" X 1-1/2" UNC	1	ALL AUGERS	STD HARDWARE ITEM
6	N/A	NUT,HEX,5/16" UNC	1	ALL AUGERS	STD HARDWARE ITEM
7	EBF-PIN	PIN,AUGER	1	ALL AUGERS	
N/A	EBF-EXT	EXTENSION,15"	1	ALL AUGERS	EXTENSION NOT SHOWN
EBF-02P = 747401, EBF-04P = 747402, EBF-06P = 747403, EBF-08P = 747404					



ITEM	PART NUMBER	DESCRIPTION	QTY	APPLICATION	COMMENTS
1	2424-1	BIT, SCREW (ICE ONLY)	1	ALL ICE AUGERS	
2	N/A	SCREW, ALLEN, 5/16" X 18 X 1-1/4"	1	ALL ICE AUGERS	STD HARDWARE ITEM
3	N/A	SCREW, CAP, 1/4-20 X 5/8"	2,3	ALL ICE AUGERS	STD HARDWARE ITEM
4	N/A	NUT, HEX, NYLOCK, 1/4"	3,4	ALL ICE AUGERS	STD HARDWARE ITEM
6	Y-246	BLADE, 6" (ICE ONLY)	1	IBH-06	
7	Y-248	BLADE, 8" (ICE ONLY)	1	IBH-08	
9	N/A	SCREW, CAP, 1/4-20 X 1-1/4"	1	ALL ICE AUGERS	STD HARDWARE ITEM
10	N/A	SCREW, CAP, 5/16-18 X 1-1/4"	1	ALL ICE AUGERS	STD HARDWARE ITEM
11	N/A	WASHER, FLAT, 1/4"	5	ALL ICE AUGERS	STD HARDWARE ITEM
12	N/A	NUT, HEX, NYLOCK, 5/16-18	1	ALL ICE AUGERS	STD HARDWARE ITEM
13	N/A	WRENCH, ALLEN, 1/4"	1	ALL ICE AUGERS	STD HARDWARE ITEM

IBH-06 = 745413, IBH-08 = 745414