

Tanaka

Parts Catalog

E-Z Tiller (TOUCH START)

Model: TS-720 (RC-210E)

Part # 12752 3-05-97

FIG.1 ENGINE

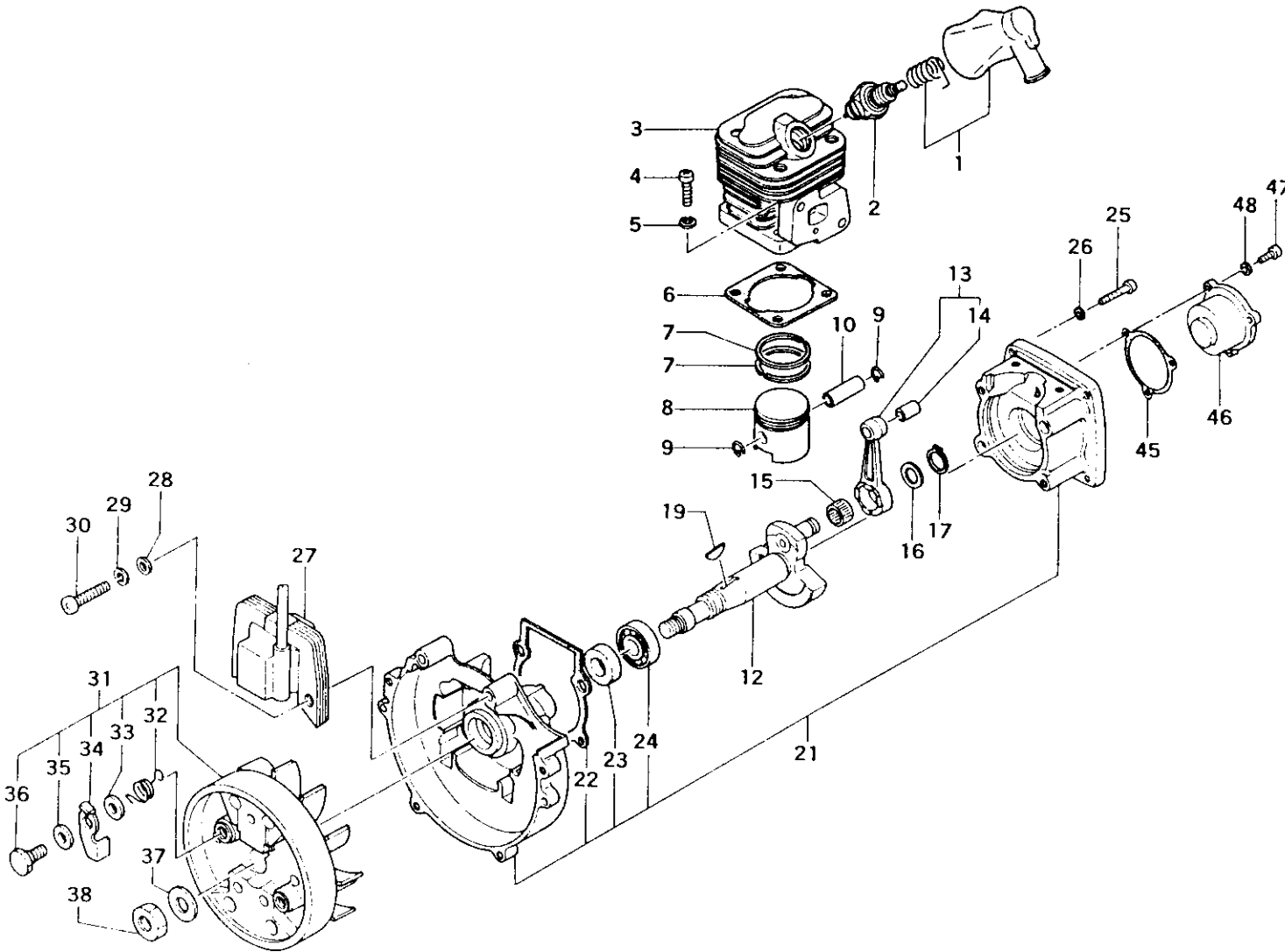


FIGURE 1

TS-720 PARTS LISTING

REF.	PART NO.	PART DESCRIPTION	Q	C	S	SERIAL NO	REMARKS
1	157-0097A-900	CAP,SPARK PLUG,ASS'Y	1		B		
2	018-11660-21	PLUG,SPARK	1		B		
3	002-0631P-20	CYLINDER	1		B		
4	990-11050-181	SCREW,5X18	4		B		
5	992-10050-012	WASHER,S,5	4		A		
6	017-0631A-200	GASKET,CYLINDER	1		B		
7	041-00601-210	RING,PISTON	2		B		
8	031-0636J-200	PISTON	1		C		
9	039-01620-200	CIRCLIP,PISTON PIN	2		A		
10	037-00601-200	PIN,PISTON	1		C		
12	059-0634F-200	CRANKSHAFT,DRIVE SIDE	1		D	~H062021	
12	059-0634F-210	CRANKSHAFT,DRIVE SIDE	1		D	H062022~	
13	061-0631A-801	ROD,CONNECTING	1		C		
14	999-62081-225	BEARING,NEEDLE,F-810	1		C		
15	999-62101-432	BEARING,NEEDLE,10148	1		C		
16	801-10205-202	WASHER,PULLEY	1		D		
17	993-50010-002	RING,STOP,C-10 EX	1		D		
19	068-10100-200	KEY,WOODRUFF,3X13X4.5	1		C		
21	072-0634F-910	CRANKCASE,ASS'Y	1		D		
22	090-06097-200	GASKET,CRANKCASE	1		C		
23	999-66152-511	SEAL,OIL,#VE15X25X7	1		C		
24	999-61600-200	BEARING,BALL,#6002	1		C		
25	990-11050-251	SCREW,5X25	4		D		
26	992-10050-012	WASHER,S,5	4		A		
27	167-20508-800	COIL,IGNITION	1		D		
28	992-00050-011	WASHER,SMALL,5	2		C		
29	992-10050-012	WASHER,S,5	2		C		
30	990-11050-201	SCREW,MX20	2		C		
31	155-20514-901	ROTOR,MAGNETO ASS'Y	1		D		
32	790-0633M-210	SPRING,PAWL	2		D		
33	786-00601-200	WASHER,RECOIL STARTER	2		D		
34	788-0633M-210	PAWL,STARTER	2		D		
35	822-00601-200	SHIM,7X11.8X.60	2		C		
36	793-10200-202	BOLT,STEP	2		C		
37	992-00120-011	WASHER,12	1		D		
38	991-11120-011	NUT,12	1		A		
45	317-0634F-200	PACKING,LID	1		D		
46	078-0634F-200	LID,CRANK CASE	1		D		
47	990-11050-121	SCREW,5X12	1		A		
48	992-10050-012	WASHER,S,5	2		A		

* Indicates the part is included in a kit or assembly and is not available individually. Q=Quan. used
C=Interchangeability S=Stocking code: A-Fast moving B=Med. fast C=Med. move D=Slow move
E=N.L.A. F=Superseded or replaced by a new part

FIG.2 ENGINE COMPONENTS

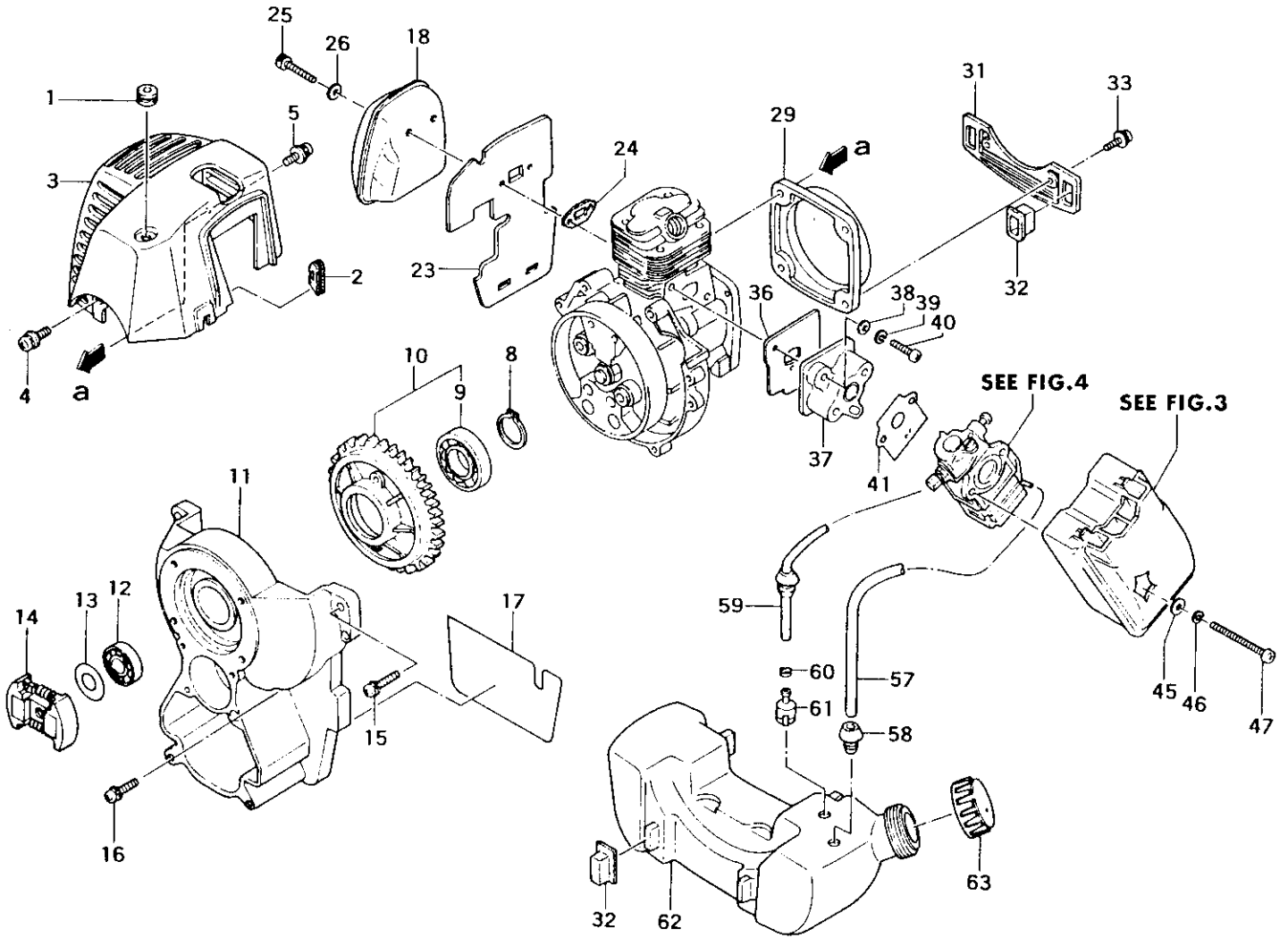


FIGURE 2

TS-720 PARTS LISTING

REF.	PART NO.	PART DESCRIPTION	Q	C	S	SERIAL NO.	REMARKS
1	202-01003-201	GROMMET,SECONDARY CORD	1		C		
2	203-0631A-200	GROMMET	1		D		
3	738-0634C-200	PROTECTOR,MUFFLER	1		B		
4	994-15040-222	SCREW,PS,4X22	2		A		
5	994-15040-122	SCREW,4X12/PS	2		C		
8	993-50017-002	RING,STOP,C17 EX	1		C		
9	999-61600-301	BEARING,BALL,6003ZZ	1		B		
10	774-0634F-800	PULLEY,STARTER	1		D		
11	112-0634C-200	CASE,FAN	1		D		
12	999-61600-001	BEARING,BALL,#6000ZZ	1		B		
13	173-35500-200	SHIM,10.1X16X.20	V		D		Shims are "as needed" to obtain correct c/s end play
13	174-35500-200	SHIM,10.1X16X.30	V		C		
13	175-35500-200	SHIM,10.1X16X1.0	V		C		
14	277-0631Q-900	CLUTCH,ASS'Y	1		C		
15	994-14050-202	SCREW,5X20/S	1		C		
16	994-14050-402	SCREW,5X40/S	3		D		
17	919-0634C-201	DECAL,CAUTION	1		D		
18	706-0634C-800	MUFFLER	1		C		
23	133-0631A-201	SHIELD,HEAT	1		B		
24	737-06100-21	GASKET,MUFFLER	1		C		
25	990-51050-503	BOLT,HEX,5X50	2		C		
26	992-01050-011	WASHER,5	2		C		
29	218-0634F-200	COVER,CRANK CASE	1		D		
31	653-0631A-200	BRACKET,TANK	1		C		
32	655-00940-201	CUSHION,FUEL TANK	4		D		
33	994-15040-222	SCREW,PS,4X22	2		A		
36	403-0631A-202	GASKET,INLET MANIFOLD	1		C		
37	404-0634C-801	INSULATOR,CARBURETOR	1		C		
38	992-01050-011	WASHER,5	2		A		
39	992-10050-012	WASHER,S,5	2		A		
40	990-11050-221	SCREW,5X22	2		B		
41	402-0634C-200	GASKET,CARBURETOR	1		D		
45	992-00050-011	WASHER,SMALL,5	2		C		
46	992-10050-012	WASHER,S,5	2		A		
47	990-11050-551	SCREW,5X55	2		C		
57	700-03005-090	PIPE,FUEL,3X5X90	1		D		
58	222-06300-200	GROMMET,FUEL PIPE	1		B		
59	223-0162V-900	PIPE,FUEL,ASS'Y	1		A		
60	680-00731-201	CLIP 6.3	1		B		

* Indicates the part is included in a kit or assembly and is not available individually. Q=Quan. used
C=Interchangeability S=Stocking code: A=Fast moving B=Med. fast C=Med. move D=Slow move
E=N.L.A. F=Superceded or replaced by a new part

FIGURE 2 cont.

TS-720 PARTS LISTING

REF.	PART NO.	PART DESCRIPTION	Q	C	S	SERIAL NO.	REMARKS
61	675-04042-80	FILTER,FUEL	1		A		
62	591-0634C-201	TANK	1		C		
63	595-0634C-91	CAP,TANK	1		B		

* Indicates the part is included in a kit or assembly and is not available individually. Q=Quan. used
C=Interchangeability S=Stocking code: A-Fast moving B=Med. fast C=Med. move D=Slow move
E=N.L.A. F=Superseded or replaced by a new part

FIG.3 AIR CLEANER

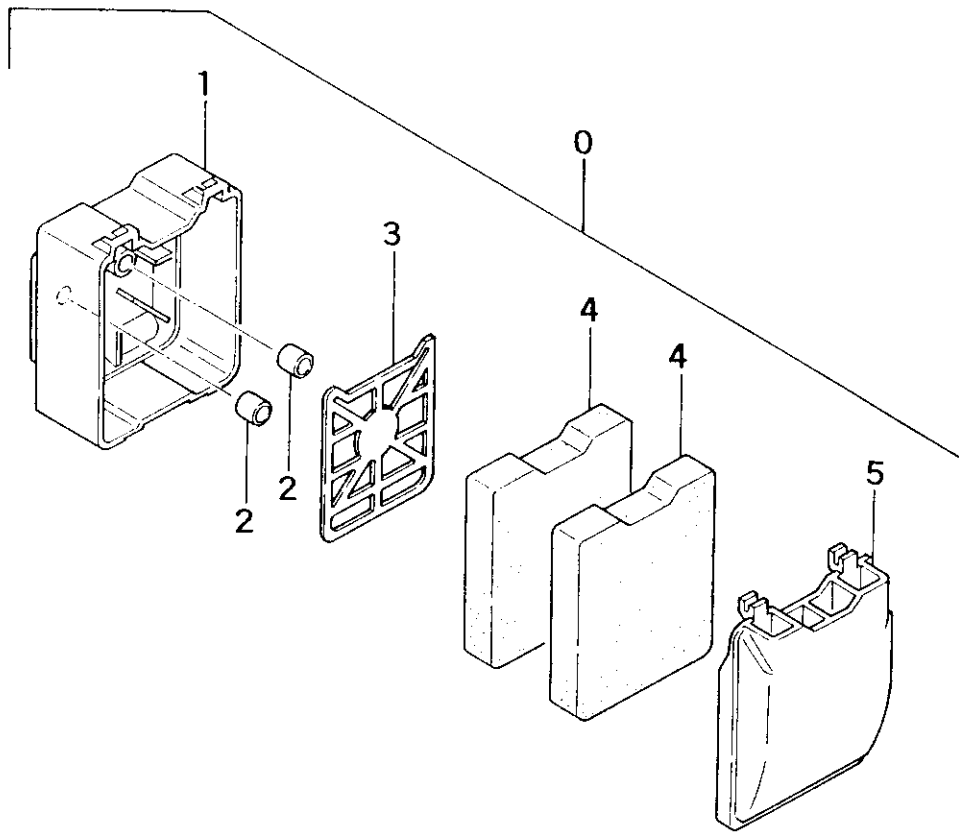


FIGURE 3

TS-720 PARTS LISTING

REF.	PART NO.	PART DESCRIPTION	Q	C	S	SERIAL NO	REMARKS
0	410-0634C-900	CLEANER,AIR ASS'Y	1		D		
1	423-0634C-200	BODY,CLEANER	1		D		
2	470-0602K-200	COLLAR	2		B		
3	476-0634C-200	BOARD,BLOW OVER CHECK	1		B		
4	446-0634C-200	ELEMENT,CLEANER	2		C		
5	424-0634C-200	CAP,CLEANER	1		C		

FIG.4 CARBURETOR

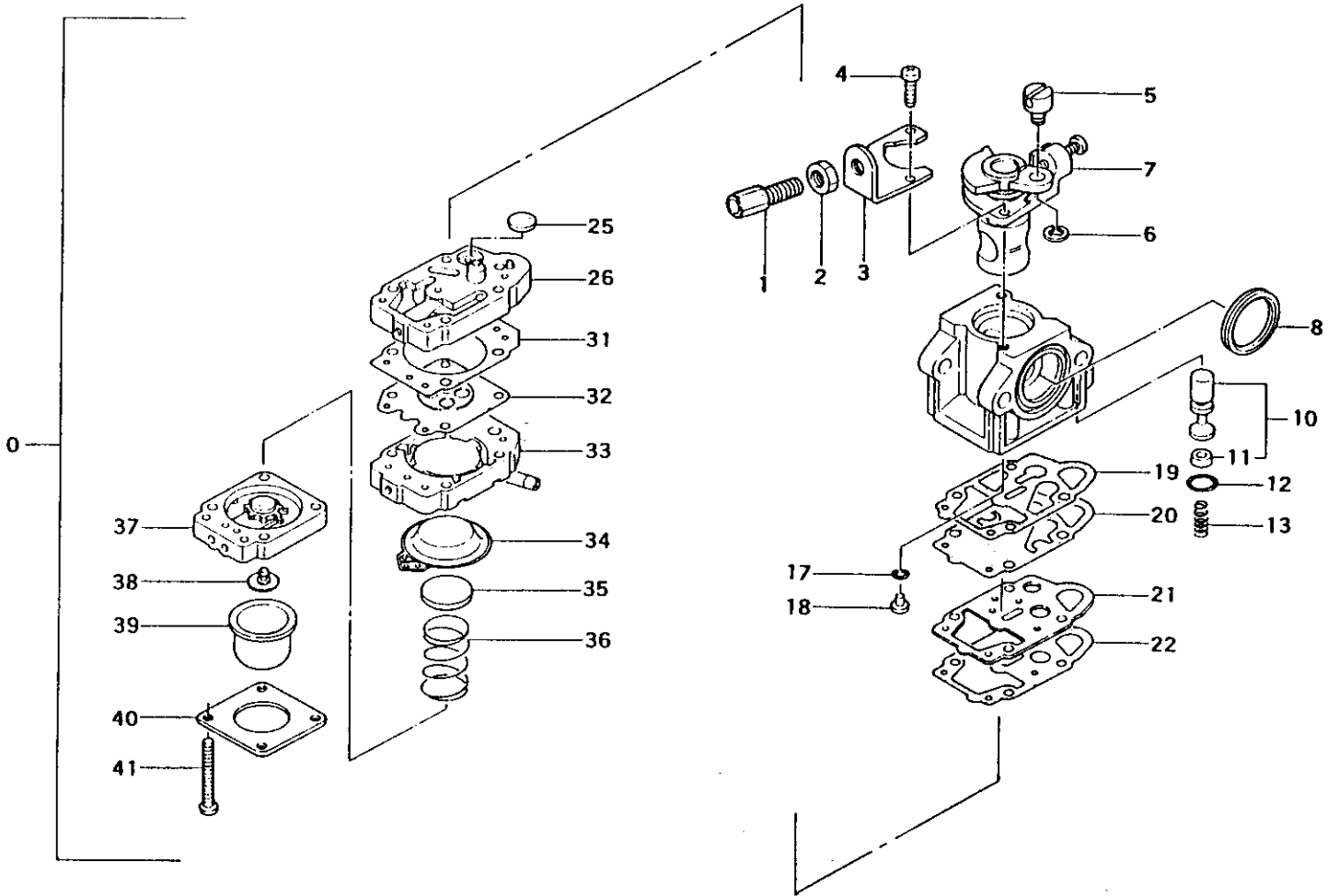


FIGURE 4

TS-720 PARTS LISTING

REF.	PART NO.	PART DESCRIPTION	Q	C	S	SERIAL NO.	REMARKS
0	455-25120-901	CARBURETOR,ASS'Y	1		D		
1	894-01401-201	RECEIVER,OUTER	1		B		
2	991-01060-013	NUT,6	1		B		
3	544-25120-200	STAY,ADJUST,CABLE	1		B		
4	514-25100-200	SCREW,THROTTLE SET	2		D		
5	539-25120-200	SWIVEL	1		D		
6	489-25100-200	RING,STOP	1		B		
7	488-25120-900	VALVE,THROTTLE	1		D		
8	431-0634C-200	PACKING,CLEANER	1		C		
10	610-25120-900	PLUNGER,STARTER,ASS'Y	1		D		
11	480-25120-200	VALVE,B	1		D		
12	550-25120-200	O-RING	1		D		
13	611-25120-200	SPRING,PLUNGER	1		C		
17	---	*O-RING	1		C		
18	599-2000W-460	JET,MAIN,#46	1		C		* Included in Carb. Repair Kit 650-25120-900 (Not available individually)
19	577-25120-200	PACKING,PUMP	1		D		
20	---	*DIAPHRAGM,PUMP	1		D		
21	523-25120-200	PLATE,PUMP	1		C		
22	522-25120-200	GASKET,PLATE	1		D		
25	---	*SCREEN,INLET	1		C		
26	575-25120-900	BODY,PUMP ASS'Y	1		C		
31	---	*GASKET,DIAPHRAGM	1		C		
32	---	*DIAPHRAGM,METERING	1		A		
33	476-25120-800	CASE,DIAPHRAGM	1		D		
34	---	*DIAPHRAGM,STARTER	1		D		
35	635-25120-200	RETAINER	1		D		
36	637-25120-200	SPRING,STARTER	1		C		
37	442-25120-900	BODY,PRIMING PUMP,ASS'Y	1		C		
38	479-25120-200	VALVE,COMBINATION	1		D		
39	447-25108-200	BULB,PRIMING	1		A		
40	638-25120-200	COVER,PRIMING PUMP	1		D		
41	548-25120-200	SCREW,SET	4		D		

* Indicates the part is included in a kit or assembly and is not available individually. Q=Quan. used
 C=Interchangeability S=Stocking code: A-Fast moving B=Med. fast C=Med. move D=Slow move
 E=N.L.A. F=Superseded or replaced by a new part

FIG.5 CLUTCH CASE

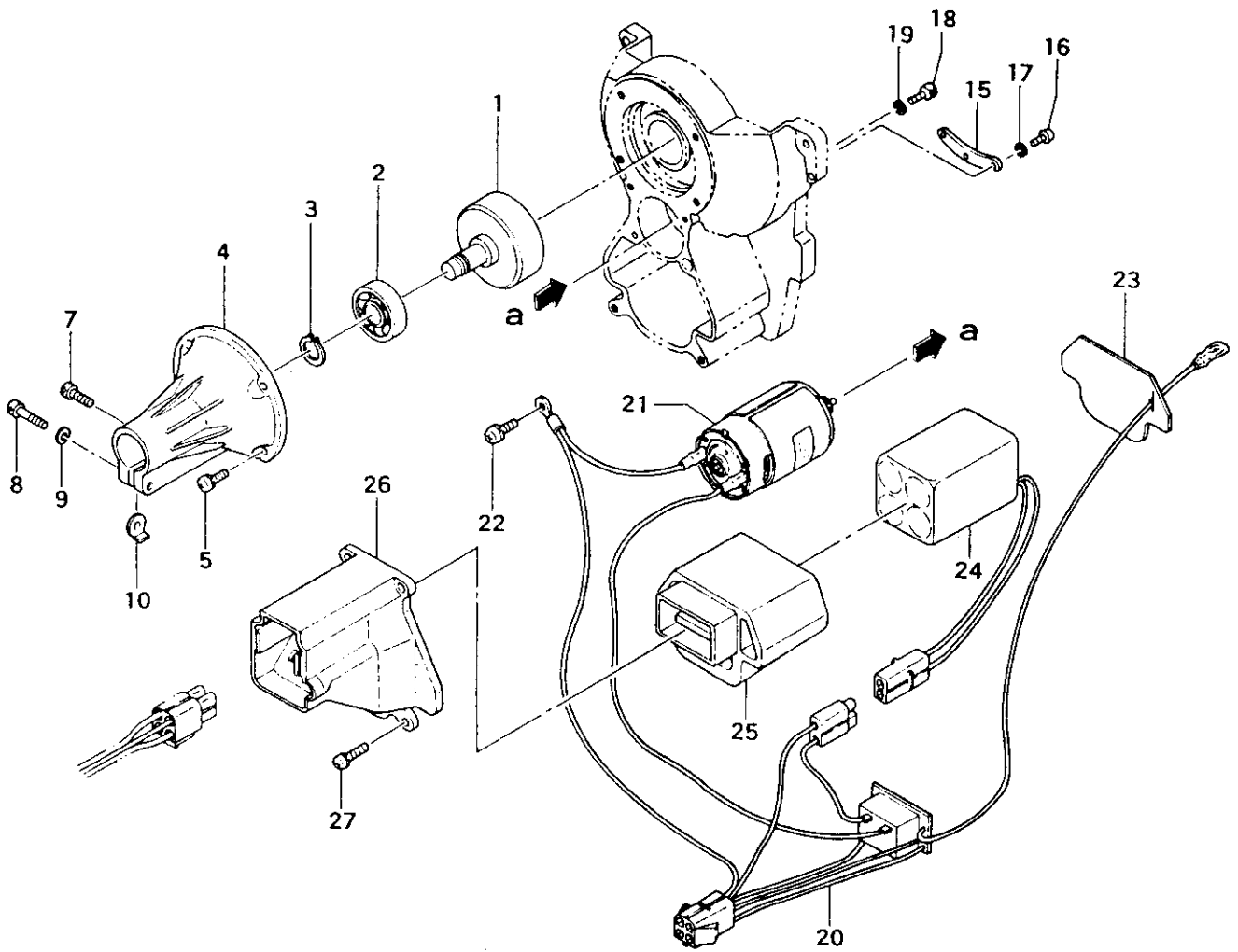


FIGURE 5

TS-720 PARTS LISTING

REF.	PART NO.	PART DESCRIPTION	Q	C	S	SERIAL NO.	REMARKS
1	289-06460-80	DRUM,CLUTCH	1		D		
2	999-61620-101	BEARING,BALL #6201ZZ	1		C		
3	993-50012-002	RING,STOP,C-12 EX	1		B		
4	331-0634C-200	CASE,CLUTCH,RED	1		B		
5	994-14050-162	SCREW,S,5X16	4		C		
7	990-51050-103	BOLT,HEX.HOLE,5X10	1		C		
8	990-51050-203	BOLT,HEX.HOLE,5X20	1		B		
9	992-10050-062	WASHER,S,5	1		D		
10	249-0630G-201	SPACER	1		D		
15	670-37600-201	RECEIVER,SHAFT	1		D		
16	990-11040-101	SCREW,4X10	2		A		
17	992-10040-012	WASHER,S,4	2		B		
18	990-51030-103	BOLT,HEX.HOLE 3X10	2		C		
19	992-10030-012	WASHER,S.,3	2		B		
20	655-37651-800	HARNES, WIRE	1		C		
21	306-0634F-800	MOTOR	1		D		
22	994-14040-081	SCREW,4X8	1		D		
23	599-0634F-200	CUSHION	1		C		
24	BP-5000	BATTERY,ASS'Y	1		B		
25	152-0634F-200	PROTECTOR,BATTERY	1		C		
26	136-0634C-201	COVER,FAN CASE	1		C		
27	994-15040-122	SCREW,4X12/PS	4		C		

* Indicates the part is included in a kit or assembly and is not available individually. Q=Quan. used
 C=Interchangeability S=Stocking code: A-Fast moving B=Med. fast C=Med. move D=Slow move
 E=N.L.A. F=Superceded or replaced by a new part

FIG.6 FRAME

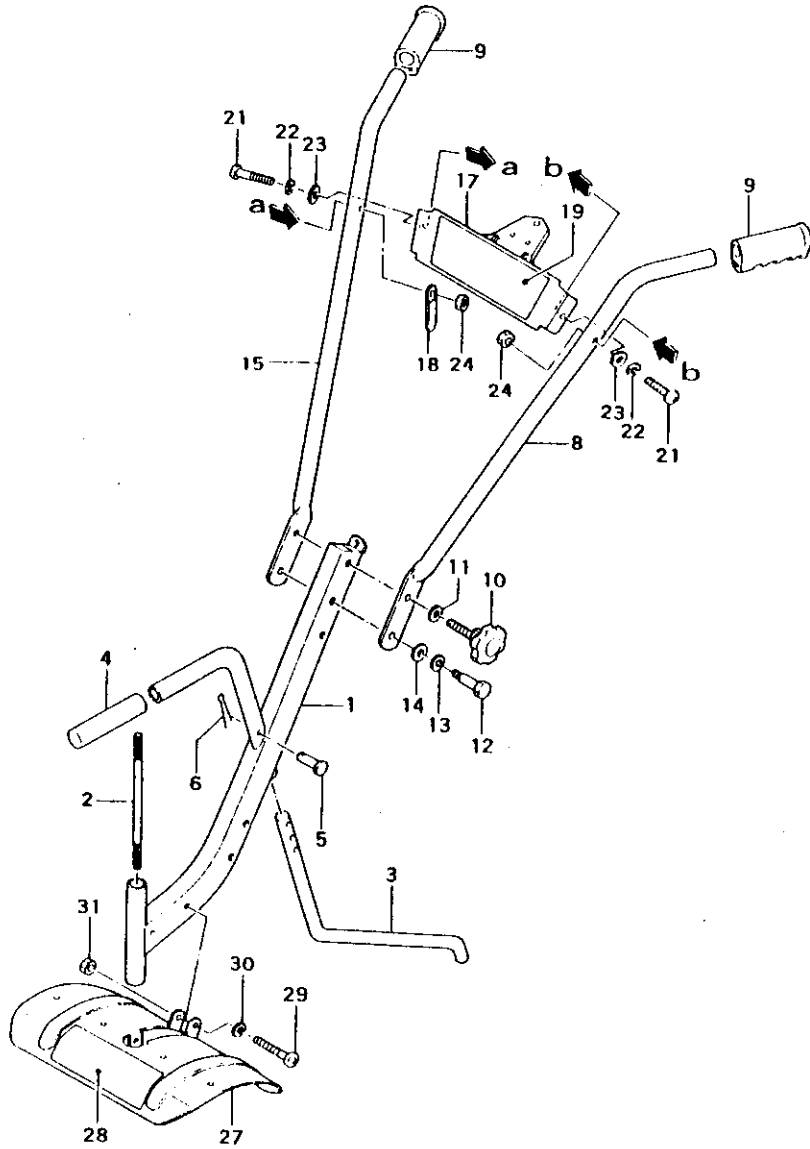


FIGURE 6

TS-720 PARTS LISTING

REF.	PART NO.	PART DESCRIPTION	Q	C	S	SERIAL NO	REMARKS
1	081-33130-800	FRAME	1		D		
2	343-33130-200	SHAFT,DRIVE	1		D		
3	230-33130-200	STAKE,DRAG	1		B		
4	166-33130-200	GRIP,HANDLE B	1		B		
5	400-39907-200	PIN,LOCK	1		D		
6	129-35100-201	STOPPER,BRACKET PIN A	1		D		
8	159-33130-200	HANDLE,L.	1		B		
9	165-33130-200	GRIP,HANDLE A	2		C		
10	210-33130-800	KNOB,LOCK	1		D		
11	992-00080-011	WASHER,8	1		D		
12	226-33130-200	BOLT,SPECIAL	1		D		
13	992-10100-012	WASHER,S,10	1		B		
14	992-00100-011	WASHER,10	1		C		
15	158-33130-800	HANDLE,R	1		D		
17	640-33130-200	PLATE,SWITCH MOUNT	1		C		
18	198-10246-800	CLAMP,CORD	1		D		
19	906-33130-201	DECAL	1		D		
21	990-11060-351	SCREW,6X35	2		C		
22	992-10060-012	WASHER,S,6	2		A		
23	992-00060-011	WASHER,SMALL,6	2		C		
24	991-01060-011	NUT,6	2		C		
27	441-33130-800	COVER,SAFETY	1		C		
28	907-33130-201	DECAL	1		C		
29	990-11060-351	SCREW,6X35	2		B		
30	992-10060-012	WASHER,S,6	2		D		
31	991-01060-011	NUT,6	2		A		

* Indicates the part is included in a kit or assembly and is not available individually. Q=Quan. used
C=Interchangeability S=Stocking code: A-Fast moving B=Med. fast C=Med. move D=Slow move
E=N.L.A. F=Superceded or replaced by a new part

FIG.7 WIRE HARNESS

WARNING : Incorrect wiring can cause serious damage to electrical components.

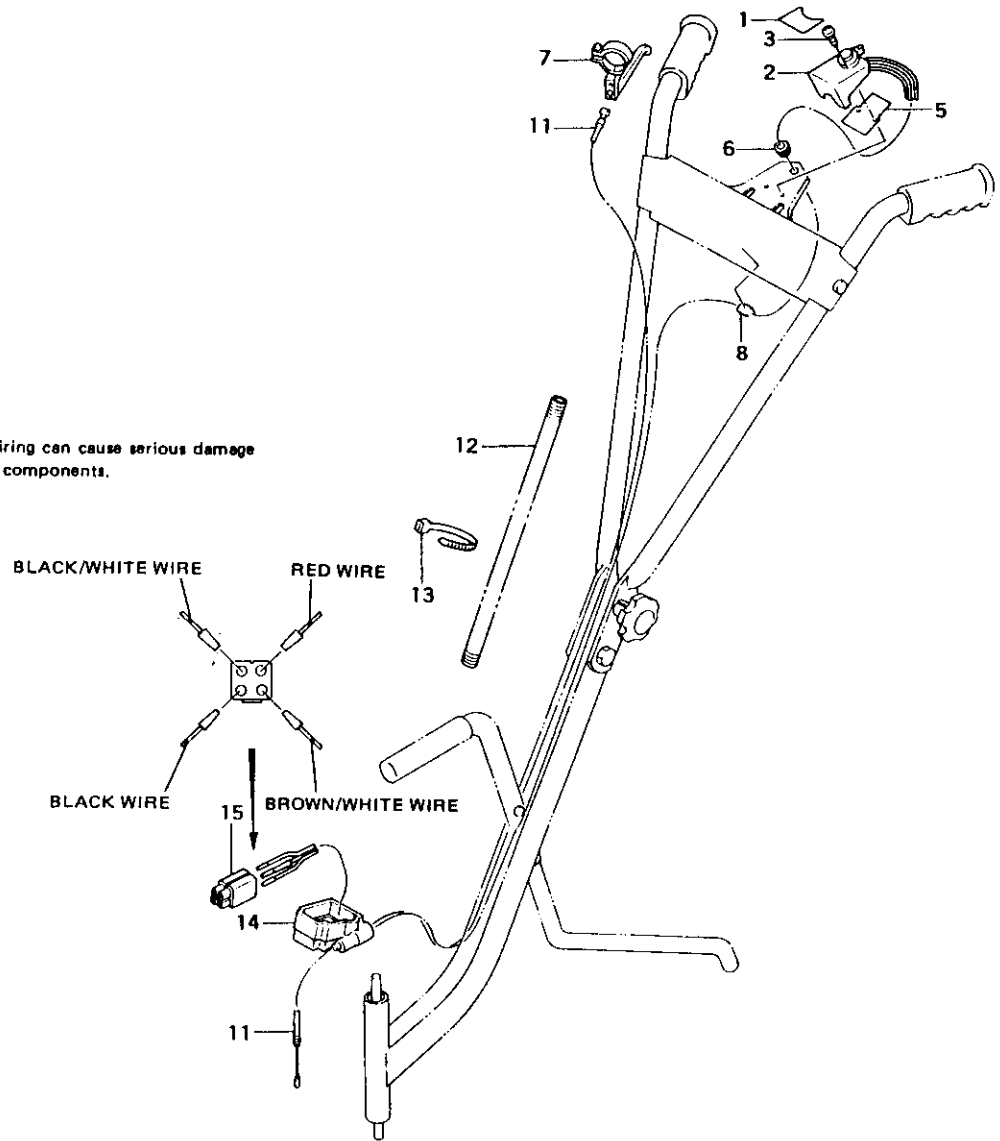


FIGURE 7

TS-720 PARTS LISTING

REF.	PART NO.	PART DESCRIPTION	Q	C	S	SERIAL NO	REMARKS
1	169-33130-200	DECAL, TOUCH START	1		D		
2	156-33130-900	BUTTON, STOP, ASS'Y	1		D		
3	993-42030-181	SCREW, TAPPING, 3X18	2		B		
5	645-33130-200	INSULATOR	1		B		
6	202-01003-201	GROMMET, SECONDARY CORD	1		C		
7	870-33130-900	LEVER, THROTTLE ASS'Y	1		D		
8	198-0634C-200	CLAMP, CORD	1		B		
11	885-33130-801	WIRE, THROTTLE	1		D		
12	164-10092-000	TUBE, PROTECTION, 920L	1		D		
13	198-33130-200	CLAMP, CORD	2		E		
14	201-0634C-200	SEAL, DUST	1		D		
15	656-37600-200	CONNECTOR, MALE, 4P	1		D		

* Indicates the part is included in a kit or assembly and is not available individually. Q=Quan. used
 C=Interchangeability S=Stocking code: A=Fast moving B=Med. fast C=Med. move D=Slow move
 E=N.L.A. F=Superseded or replaced by a new part

FIG.8 GEAR CASE

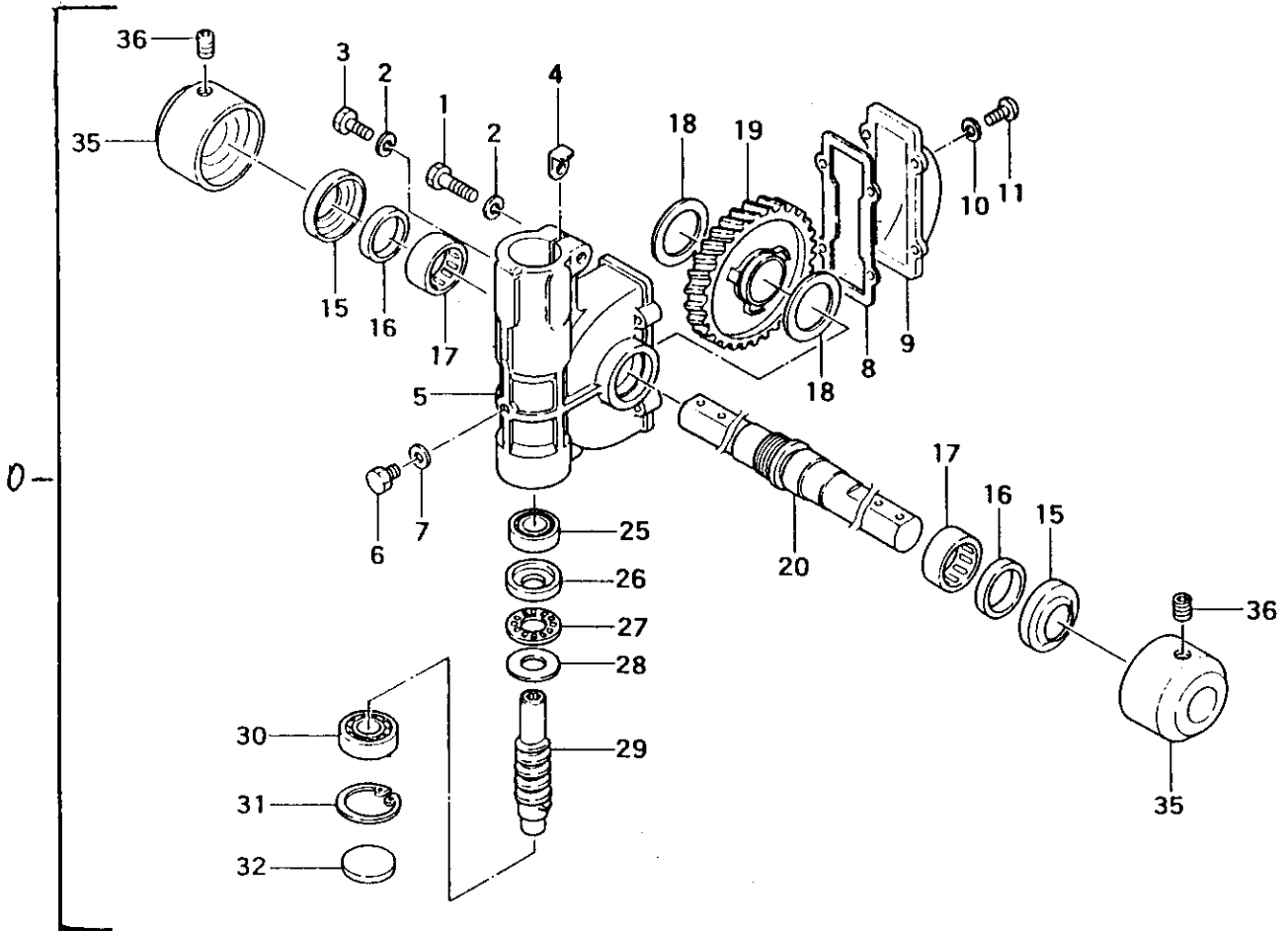


FIGURE 8

TS-720 PARTS LISTING

REF.	PART NO.	PART DESCRIPTION	Q	C	S	SERIAL NO.	REMARKS
0	300-33130-900	CASE,GEAR ASS'Y	1		C		
1	990-21060-251	BOLT,6X25	1		D		
2	992-10060-012	WASHER,S,6	2		B		
3	990-21060-121	BOLT,6X12	1		B		
4	249-0630G-201	SPACER	1		D		
5	300-33130-200	CASE,GEAR	1		C		
6	990-21060-081	BOLT,6X8	1		B		
7	727-01040-201	GASKET,DRAIN	1		C		
8	318-39907-200	GASKET,GEAR CASE	1		D		
9	323-39907-200	COVER,GEAR CASE	1		D		
10	992-10050-012	WASHER,S,5	4		A		
11	990-11050-101	SCREW,5X10	4		B		
15	307-33130-200	COVER,WINDING PROTECTION	2		C		
16	999-66202-628	SEAL,OIL,#DS20264	2		C		
17	999-62202-611	BEARING,NEEDLE,2026	2		C		
18	140-33130-200	WASHER,THRUST,2.0	2		D		
19	301-33130-200	GEAR,WHEEL	1		D		
20	304-33130-201	SHAFT,DRIVE	1		C		
25	999-61600-101	BEARING,BALL,6001ZZ	1		D		
26	321-39907-200	WASHER,STEP	1		C		
27	999-62122-668	BEARING,THRUST NEEDLE	1		C		
28	999-62122-669	WASHER,THRUST,1226	1		C		
29	002-33130-200	SHAFT,WORM	1		C		
30	999-61690-101	BEARING,BALL,6901ZZ	1		D		
31	993-51028-002	RING,STOP,IN,C-28	1		D		
32	322-39907-200	CAP,GEAR CASE	1		D		
35	311-33130-200	CAP,CUTTER HOLDER	2		D		
36	990-80080-120	SCREW,SET,8X12	2		C		

* Indicates the part is included in a kit or assembly and is not available individually. Q=Quan. used
C=Interchangeability S=Stocking code: A-Fast moving B=Med. fast C=Med. move D=Slow move
E=N.L.A. F=Superseded or replaced by a new part

FIG.9 TOOLS & OPTIONAL PARTS

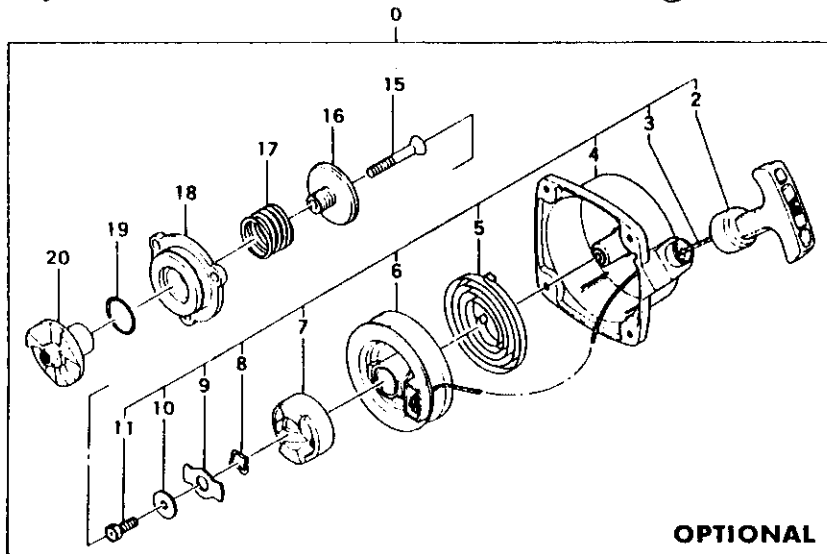
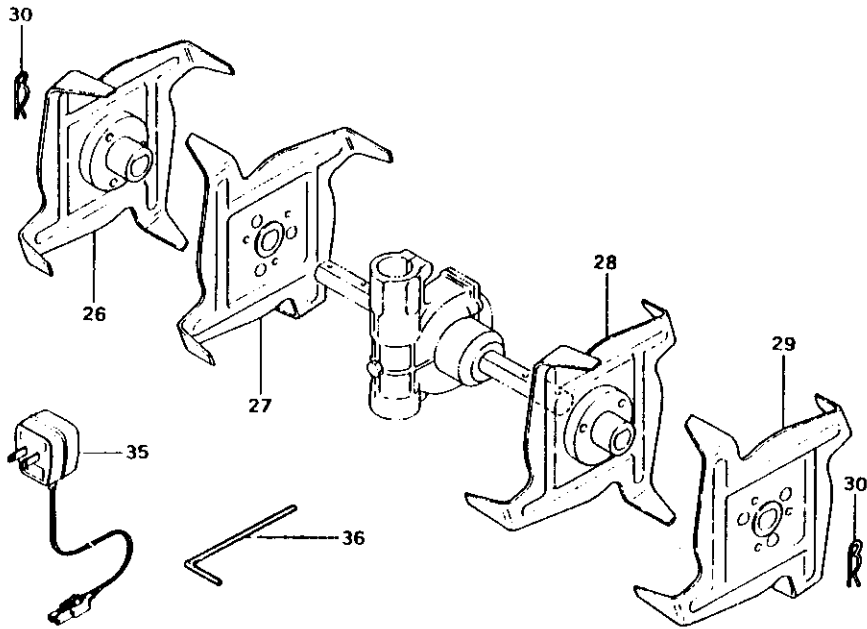
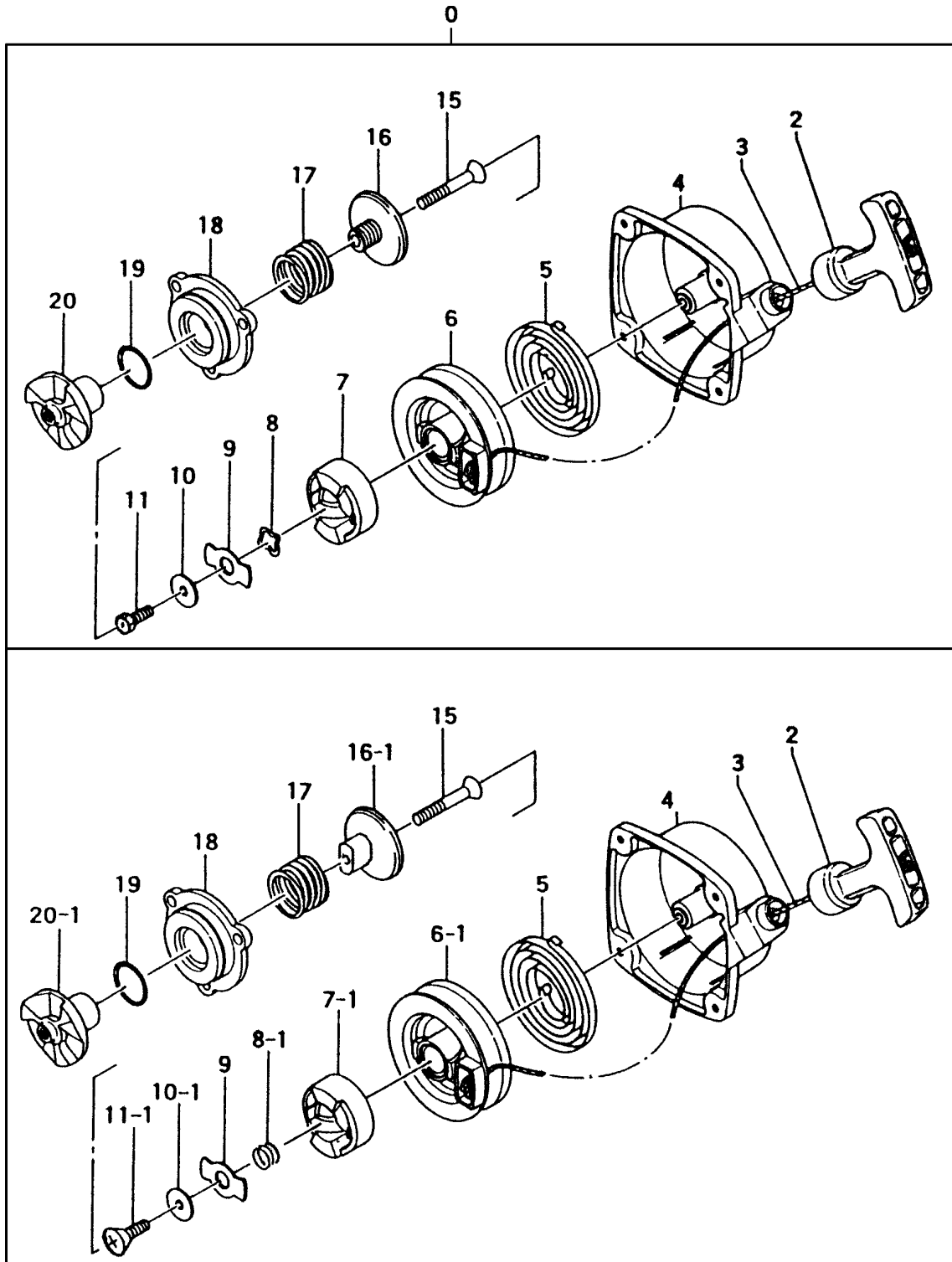


FIGURE 9

TS-720 PARTS LISTING

REF.	PART NO.	PART DESCRIPTION	Q	C	S	SERIAL NO	REMARKS
0	756-0634F-900	STARTER,RECOIL ASS'Y	1		C		
2	785-00940-200	HANDLE,STARTER	1		C		
3	783-00940-200	ROPE,STARTER	1		B		
4	772-00940-801	BODY,STARTER	1		B		
5	780-00940-200	SPRING,RECOIL	1		A		
6	774-00940-200	REEL,STARTER ROPE	1		C		
7	788-00940-200	PAWL,STARTER	1		B		
8	801-05015-200	WASHER,STARTER PULLEY	1		B		
9	837-05015-200	PLATE,FRICION	1		C		
10	822-05015-200	SHIM,STARTER PULLEY	1		C		
11	839-05015-20	BOLT,SET	1		C		
15	990-12050-281	SCREW,F.H.,5X28	1		D		
16	798-0634F-200	PULLEY,DRIVE	1		C		
17	761-0634F-200	SPRING,COIL	1		D		
18	771-0634F-201	HOLDER,PULLEY	1		C		
19	999-67015-000	O-RING,P15	1		D		
20	773-0634F-00	SET,SHAFT,PULLEY	1		D		
26	822-33130-800	TINE,OUT,R.H.	1		C		
27	823-33130-800	TINE,R.H.,INNER	1		D		
28	825-33130-800	TINE,L.H.,IN	1		C		
29	824-33130-800	TINE,L.H.,OUT	1		C		
30	821-33130-200	PIN,SNAP	2		C		
35	BC-5000	CHARGER,BATTERY	1		C		
36	813-20000-200	WRENCH,HEX,4	1		D		

* Indicates the part is included in a kit or assembly and is not available individually. Q=Quan. used
C=Interchangeability S=Stocking code: A=Fast moving B=Med. fast C=Med. move D=Slow move
E=N.L.A. F=Superceded or replaced by a new part



OPTIONAL RECOIL STARTER

ITEM	PART NUMBER	DESCRIPTION	QTY	COMMENTS
0	7560634F900	RECOIL STARTER KIT	1	
2	78500940200	HANDLE,STARTER ROPE	1	
3	78300940200	ROPE,STARTER	1	
4	7720634F800	BODY,RECOIL STARTER	1	
4-1	7720634F810	BODY,RECOIL STARTER	1	
5	7800634F200	SPRING,RECOIL	1	
6	77400940200	PULLEY,STARTER	1	
6-1	7740636T200	PULLEY,STARTER	1	
7	7880634F200	PAWL,STARTER	1	
7-1	7880636T200	PAWL,STARTER	1	
8	8010634F200	WASHER,PULLEY	1	
8-1	8010636T200	SPRING,STARTER PAWL	1	
9	8370634F200	PLATE,FRCITION	1	
10	8220634F200	SHIM,STARTER PULLEY	1	
10-1	8220636T200	SHIM,STARTER PULLEY	1	
11	83905015200	BOLT,SET	1	
11-1	8390636T200	BOLT,SET	1	
15	99012050281	SCREW,FH 5X28	1	
16	7980634F200	PULLEY	1	
16-1	7980634F210	PULLEY	1	
17	7610634F210	SPRING	1	
18	7710634F201	HOLDER,PULLEY	1	
19	99967014000	O-RING	1	
20	7730634F201	PULLEY	1	
20-1	7730634F210	PULLEY	1	