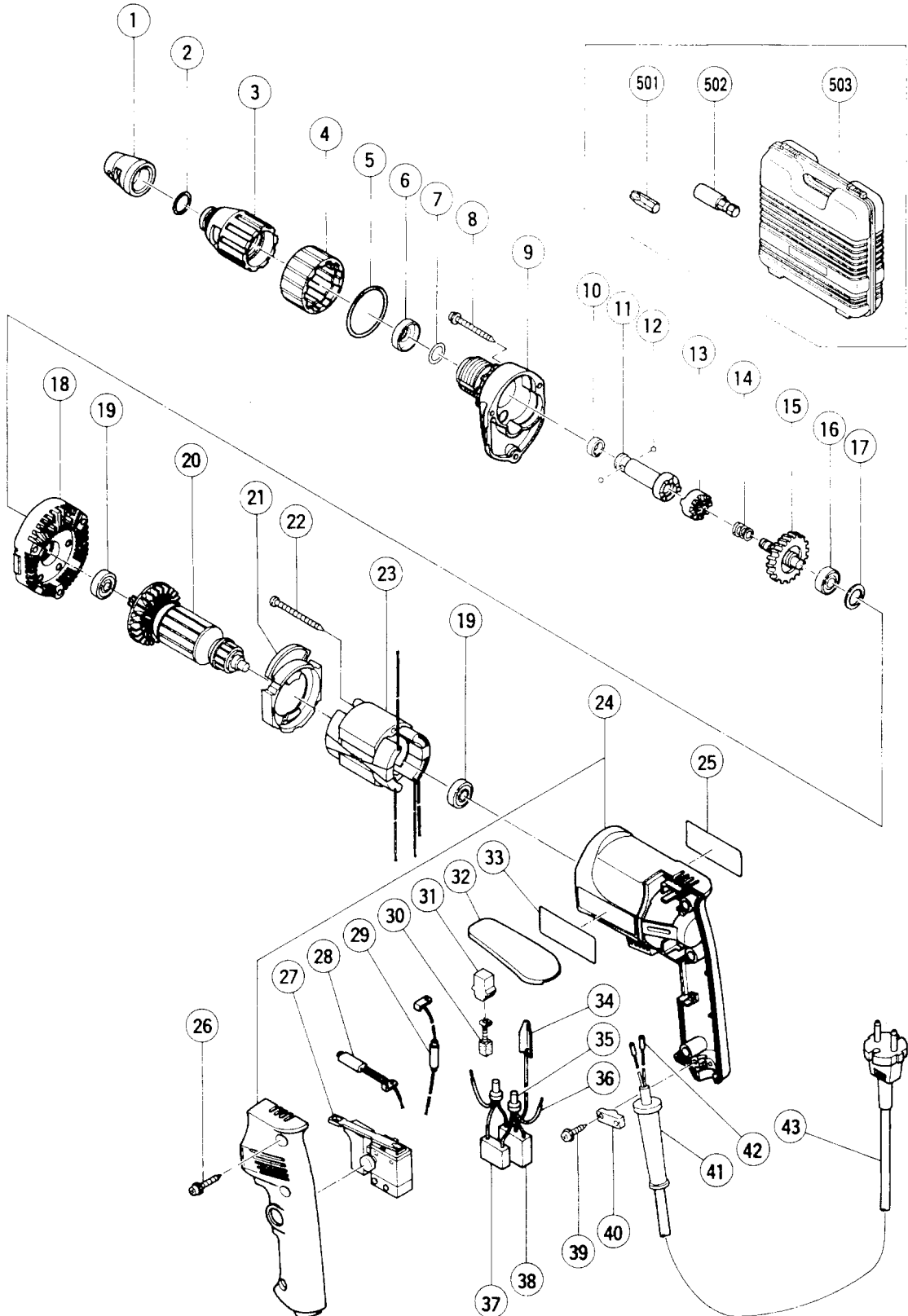


## ELECTRIC TOOL PARTS LIST

■ SCREWDRIVER  
Model W 6VA3

1999.10.20  
(E1)



## PARTS

W 6VA3

ITEM NO.	CODE NO.	DESCRIPTION	NO. USED	REMARKS
* 1	317-672	SUB STOPPER (A) FOR BIT HOLDER (41L)	1	FOR TPE,NZL,GBR,SAF,ITA,FRG,FRA,HOL, FIN,AUT,NOR,SWE,DEN,ESP,SUI
* 1	317-673	SUB STOPPER (C) FOR BIT HOLDER (75L)	1	FOR AUS,FRG,CHN
* 1	318-629	SUB STOPPER (E) FOR BIT HOLDER	1	FOR USA,CAN
2	876-031	O-RING (S-16)	1	
3	317-666	LOCATOR (A)	1	
4	317-665	LOCK SLEEVE (A)	1	
5	873-731	O-RING (S-28)	1	
6	971-468	FRINGER (A)	1	
7	317-662	O-RING (F)	1	
8	306-664	TAPPING SCREW (W/FLANGE) D4X40	3	
9	318-342	GEAR COVER ASS'Y	1	INCLUD.7
10	872-573	SET RING	1	
11	318-341	SOCKET (A) ASS'Y	1	INCLUD.10,12
12	959-148	STEEL BALL D3.175 (10 PCS.)	2	
13	307-016	CLUTCH DISC	1	
14	306-024	SPRING	1	
15	318-346	GEAR	1	
16	608-VVM	BALL BEARING 608VVC2PS2L	1	
17	987-641	WASHER (A)	1	
18	318-339	INNER COVER ASS'Y	1	INCLUD.16,17
19	608-VVM	BALL BEARING 608VVC2PS2L	2	
* 20	360-512C	ARMATURE 110V	1	
* 20	360-511U	ARMATURE ASS'Y 115V	1	INCLUD.19
* 20	360-512E	ARMATURE 220V-230V	1	
* 20	360-512F	ARMATURE 240V	1	
21	305-398	FAN GUIDE (B)	1	
22	950-515	TAPPING SCREW D4X50	2	
* 23	340-436C	STATOR 110V-115V	1	
* 23	340-436E	STATOR 220V-230V	1	
* 23	340-224F	STATOR 240V	1	
24	317-659	HOUSING.HANDLE COVER SET	1	
25		NAME PLATE	1	
26	302-086	TAPPING SCREW (W/FLANGE) D4X20 (BLACK)	3	
* 27	314-916	SPEED CONTROL SWITCH (2P) 100V-115V	1	
* 27	314-921	SPEED CONTROL SWITCH (2P) 220V-240V	1	
* 28	317-668	INTERNAL WIRE (A)	1	
* 28	314-917	INTERNAL WIRE (B) (BLUE)	1	FOR USA,CAN
* 29	317-669	INTERNAL WIRE (B)	1	
* 29	314-918	INTERNAL WIRE (B) (BROWN)	1	FOR USA,CAN
* 30	999-041	CARBON BRUSH (1 PAIR)	2	
* 30	999-072	CARBON BRUSH (AUTO STOP TYPE) (1 PAIR)	2	FOR USA,CAN
31	955-203	BRUSH HOLDER	2	
32	317-676	HOOK (A)	1	
33		HITACHI LABEL	1	
34	992-635	EARTH TERMINAL	1	FOR NOISE SUPPRESSOR
35	959-140	CONNECTOR 50091 (10 PCS.)	2	
36	317-667	INTERNAL WIRE	2	
37	930-039	NOISE SUPPRESSOR	1	
38	994-273	NOISE SUPPRESSOR	1	
39	305-812	TAPPING SCREW (W/FLANGE) D4X16 (BLACK)	2	

\* : ALTERNATIVE PARTS

10 - 99

### STANDARD ACCESSORIES

W 6VA3

ITEM NO.	CODE NO.	DESCRIPTION	NO. USED	REMARKS
501	971-511Z	+ DRIVER BIT (A) NO.2 25L	1	
* 502	317-674	MAGNETIC BIT HOLDER ASS'Y (41L)	1	INCLUD.501 FOR TPE,NZL,GBR,SAF,ITA, FRG,FRA,HOL,FIN,AUT,NOR,SWE,DEN, ESP,SUI
* 502	982-554Z	MAGNETIC BIT HOLDER (75L)	1	FOR AUS,FRG,USA,CAN,CHN
* 503	310-904	CASE	1	FOR ESP

### OPTIONAL ACCESSORIES

ITEM NO.	CODE NO.	DESCRIPTION	NO. USED	REMARKS
601	317-670	SUB STOPPER (B) FOR H3/8,H10 HEX. SOCKET	1	
602	317-671	SUB STOPPER (B) FOR H5/16 HEX. SOCKET	1	
603	317-827	SUB STOPPER (B) H1/4 HEX. SOCKET	1	
604	985-330	MAGNETIC HEX. SOCKET 3/8"X65L	1	
605	985-321	MAGNETIC HEX. SOCKET 10MMX65L	1	
606	985-322	MAGNETIC HEX. SOCKET 5/16"X65L	1	
607	985-332	MAGNETIC HEX. SOCKET 1/4"X65L	1	
608	985-326	NON-MAGNETIC HEX. SOCKET 3/8" 65L	1	
609	985-329	NON-MAGNETIC HEX. SOCKET 10MM 65L	1	
610	985-327	NON-MAGNETIC HEX. SOCKET 5/16" 65L	1	
611	985-328	NON-MAGNETIC HEX. SOCKET 1/4" 65L	1	
612	982-563Z	NON-MAGNETIC BIT HOLDER	1	
613	985-333	+ DRIVER BIT NO.1 25L	1	
614	971-512Z	+ DRIVER BIT (A) NO.3 25L	1	
615	985-334	+ DRIVER BIT NO.1 25L W/STEPPED ROD	1	
616	985-335	+ DRIVER BIT NO.2 25L W/STEPPED ROD	1	
617	985-336	- DRIVER BIT 4MMX25	1	
618	985-337	- DRIVER BIT 5MMX25	1	
619	985-338	- DRIVER BIT 6MMX25	1	
620	985-339	- DRIVER BIT 8MMX25	1	
621	985-340	- DRIVER BIT 4MMX25 (W/STEPPED ROD)	1	
622	985-341	- DRIVER BIT 5MMX25 (W/STEPPED ROD)	1	
623	985-342	HEX. BIT 4MMX25L	1	
624	985-343	HEX. BIT 5MMX25L	1	
625	985-344	HEX. BIT 6MMX25L	1	
626	310-904	CASE	1	
627	950-511	HOOK	1	

\* : ALTERNATIVE PARTS

Printed in Japan 10 - 99  
(991020 N)

**PARTS**

**W 6VA3**

ITEM NO.	CODE NO.	DESCRIPTION	NO. USED	REMARKS
40	937-631	CORD CLIP	1	
41	953-327	CORD ARMOR D8.8	1	
42	981-373	TUBE (D)	2	FOR CORD
* 43	500-212Z	CORD	1	(CORD ARMOR D8.8) FOR TPE
* 43	500-439Z	CORD	1	(CORD ARMOR D8.8) FOR NZL,AUS
* 43	500-436Z	CORD	1	(CORD ARMOR D8.8) FOR GBR (230V)
* 43	971-675Z	CORD	1	(CORD ARMOR D8.8) FOR GBR (110V)
* 43	500-454Z	CORD	1	(CORD ARMOR D8.8) FOR SAF
* 43	500-409Z	CORD	1	(CORD ARMOR D8.8)
* 43	500-395Z	CORD	1	(CORD ARMOR D8.8) FOR SUI
* 43	500-456Z	CORD	1	(CORD AMOR D8.8) FOR CHN