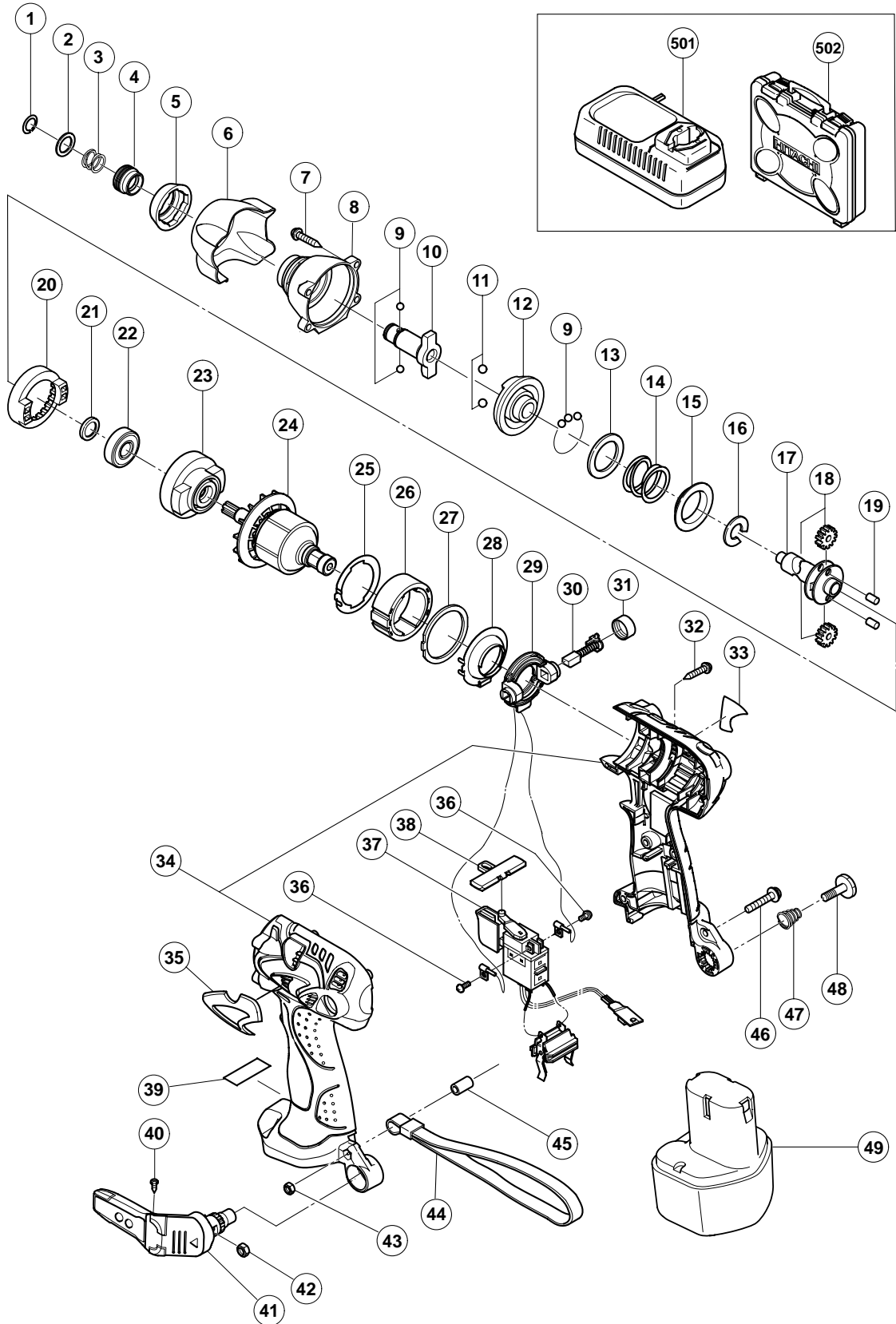


ELECTRIC TOOL PARTS LIST

CORDLESS IMPACT DRIVER
Model WH 9DM2

2004 • 3 • 25
(E1)



PARTS

WH 9DM2

ITEM NO.	CODE NO.	DESCRIPTION	NO. USED	REMARKS
1	995-933	RETAINING RING	1	
2	322-739	WASHER (F)	1	
3	322-737	GUIDE SPRING (C)	1	
4	322-738	GUIDE SLEEVE (C)	1	
5	322-249	FRONT CAP (A) (GREEN)	1	
6	322-749	PROTECTOR (B)	1	
7	319-917	TAPPING SCREW (W/SP. WASHER) D4X25 (BLACK)	4	
8	322-748	HAMMER CASE	1	
9	959-148	STEEL BALL D3.175 (10 PCS.)	30	
10	322-750	ANVIL (T)	1	
11	959-154	STEEL BALL D5.556 (10 PCS.)	2	
12	322-735	HAMMER (E)	1	
13	315-978	WASHER (J)	1	
14	322-741	HAMMER SPRING (E)	1	
15	316-172	WASHER (S)	1	
16	322-740	STOPPER (A)	1	
17	322-742	SPINDLE (E)	1	
18	318-444	IDLE GEAR SET (2 PCS.)	2	
19	319-914	NEEDLE ROLLER	2	
20	322-746	RING GEAR (D)	1	
21	319-911	WASHER (E)	1	
22	690-1VV	BALL BEARING 6901VVCMP2L	1	
23	321-664	INNER COVER (A)	1	
24	360-643	ARMATURE ASS'Y (W/BALL BEARING) DC 9.6V	1	
25	321-659	SIDE YOKE	1	
26	322-744	MAGNET (D)	1	
27	322-736	MAGNET SPACER	1	
28	321-663	DUST GUARD FIN (A)	1	
29	321-662	BRUSH BLOCK	1	
30	999-054	CARBON BRUSH 5X6X11.5 (1 PAIR)	2	
31	319-918	BRUSH CAP	2	
32	302-086	TAPPING SCREW (W/FLANGE) D4X20 (BLACK)	7	
33		NAME PLATE	1	
34	322-751	HOUSING (A).(B) SET	1	
35	322-743	HITACHI PLATE	1	
36	994-532	MACHINE SCREW (W/SP. WASHER) M3X5	2	
37	319-906	DC-SPEED CONTROL SWITCH	1	
38	321-661	PUSHING BUTTON (A)	1	
* 39		CAUTION PLATE (A)	1	FOR USA, CAN
40	321-672	TAPPING SCREW D2X6	2	
41	321-918	HOOK ASS'Y (W/LIGHT)	1	INCLUD. 40, 42
42	320-288	V-LOCK NUT M5	1	
43	949-565	LOCK NUT M4 (10 PCS.)	1	
44	306-952	STRAP (BLACK)	1	
45	322-718	SLEEVE (A)	1	
46	676-386	MACHINE SCREW (W/WASHERS) M4X25	1	
47	319-926	HOOK SPRING	1	
48	319-927	SPECIAL SCREW M5	1	
* 49	310-377	BATTERY EB 9B (W/ENGLISH N.P.)	2	
* 49	310-451	BATTERY EB 9B (W/ENGLISH N.P.)	2	FOR USA, CAN
* 49	318-368	BATTERY EB 930H (W/ENGLISH N.P.)	2	FOR NOR, SWE, DEN

STANDARD ACCESSORIES

ITEM NO.	CODE NO.	DESCRIPTION	NO. USED	REMARKS
501		CHARGER (MODEL UC 14YFA)	1	
502	322-886	CASE	1	

OPTIONAL ACCESSORIES

ITEM NO.	CODE NO.	DESCRIPTION	NO. USED	REMARKS
601	992-671	+ DRIVER BIT (B) NO.2 50L	1	
602	992-672	+ DRIVER BIT (B) NO.3 50L	1	
603	996-177	NON-MAGNETIC HEX. SOCKET 8MM 65L	1	
604	985-329	NON-MAGNETIC HEX. SOCKET 10MM 65L	1	
605	996-178	NON-MAGNETIC HEX. SOCKET 12MM 65L	1	
606	996-179	NON-MAGNETIC HEX. SOCKET 13MM 65L	1	
607	996-180	NON-MAGNETIC HEX. SOCKET 14MM 65L	1	
608	996-181	NON-MAGNETIC HEX. SOCKET 16MM 65L	1	
609	996-182	NON-MAGNETIC HEX. SOCKET 17MM 65L	1	
610	996-197	HEX. SOCKET (LONG) 21MMX166L	1	
611	321-823	DRILL CHUCK AND ADAPTER SET	1	INCLUD. 612
612	307-543	CHUCK ADAPTER	1	
613	309-922	GREASE FOR IMPACT DRIVER (500G)	1	

